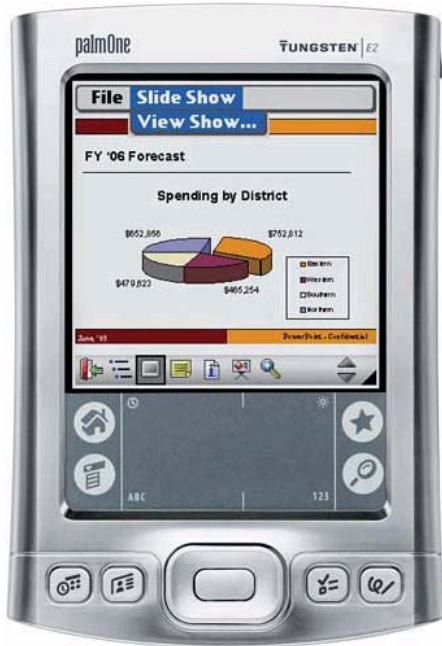
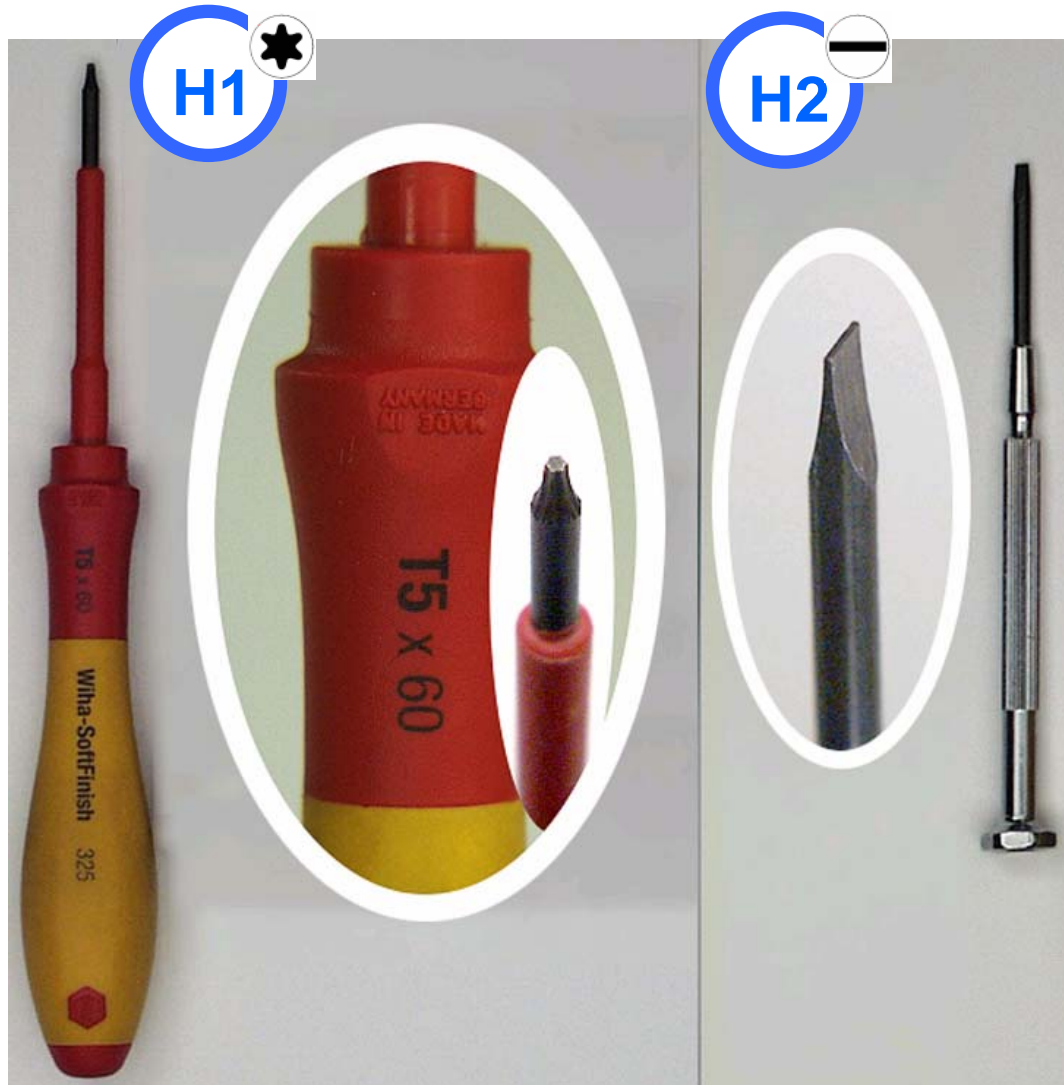


TE2.01 PRODUCT IDENTIFICATION – TUNGSTEN E2



TUNGSTEN | E2

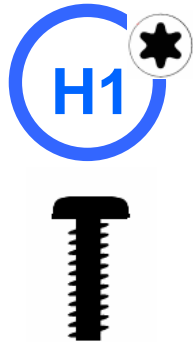




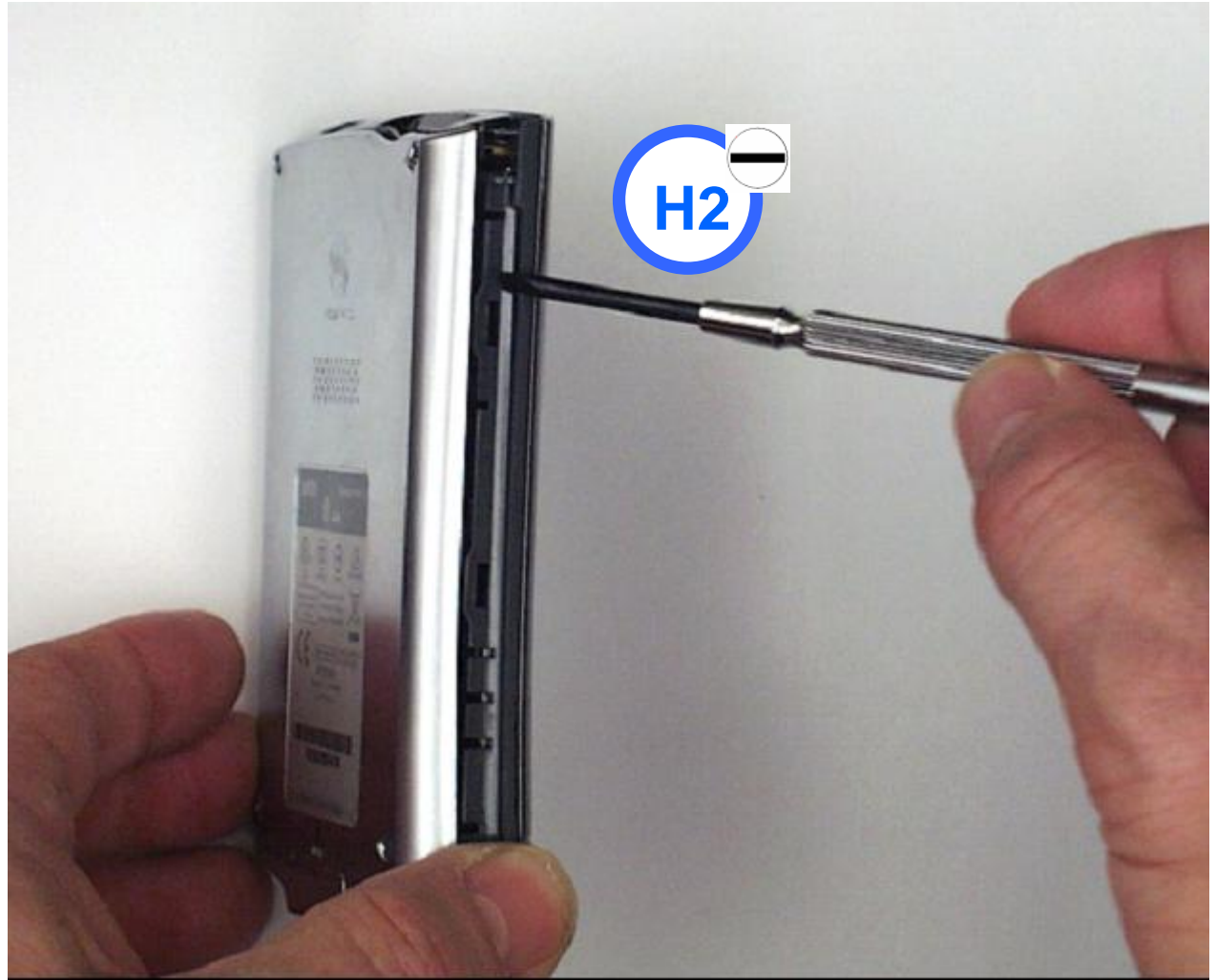
TE2.03 REMOVE STYLUS



TE2.04 REMOVE SCREWS (4)

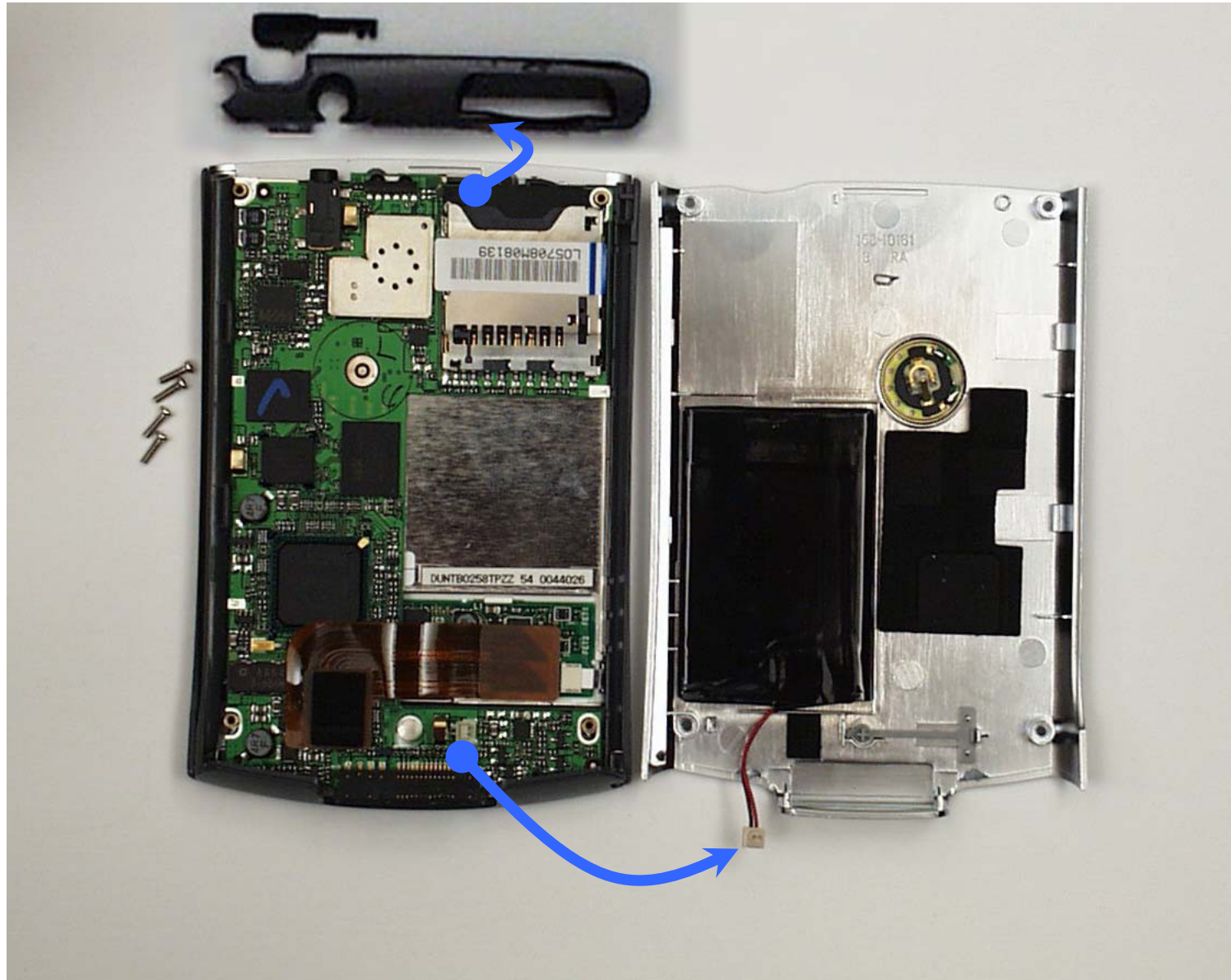


TE2.05 OPEN CASE

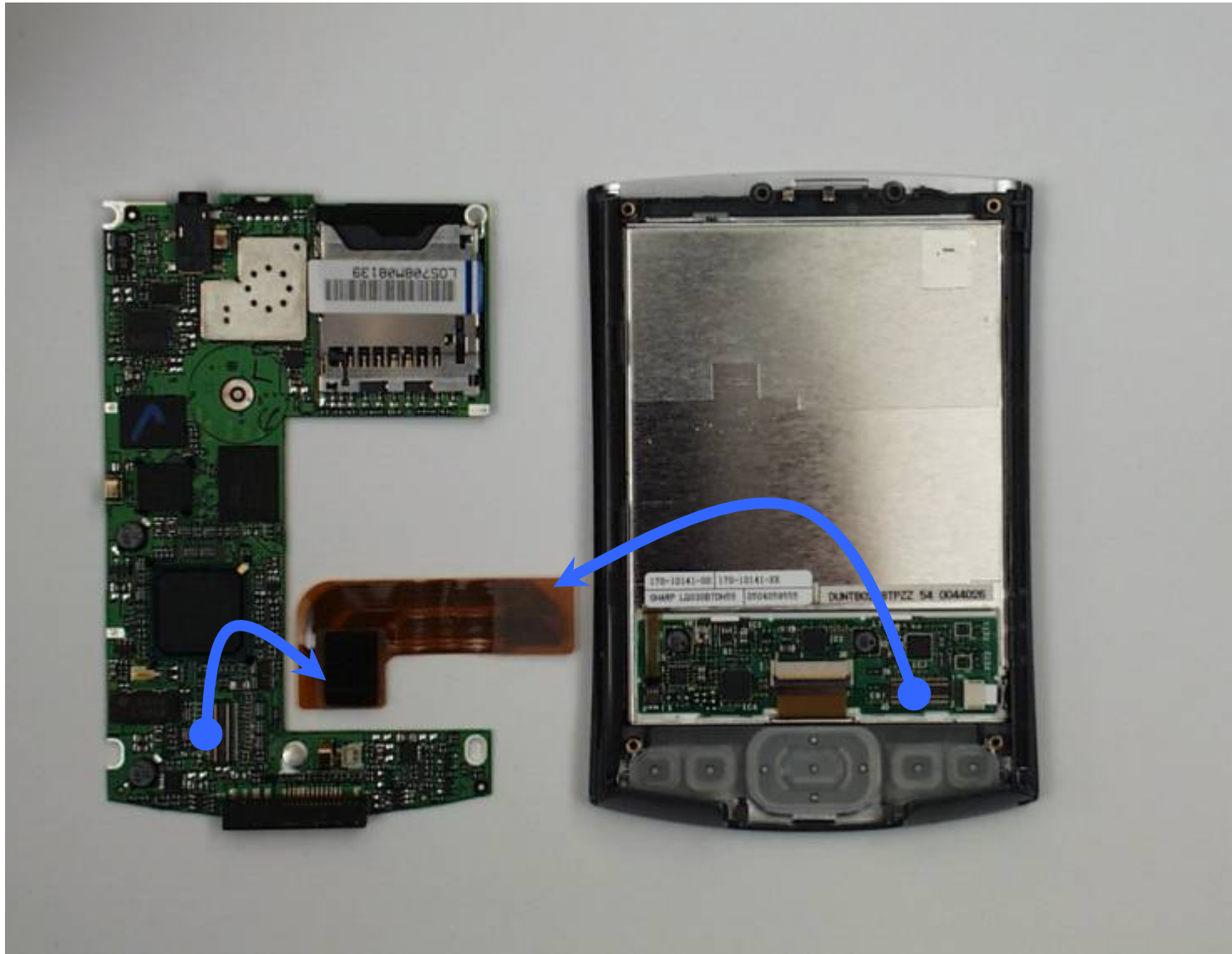




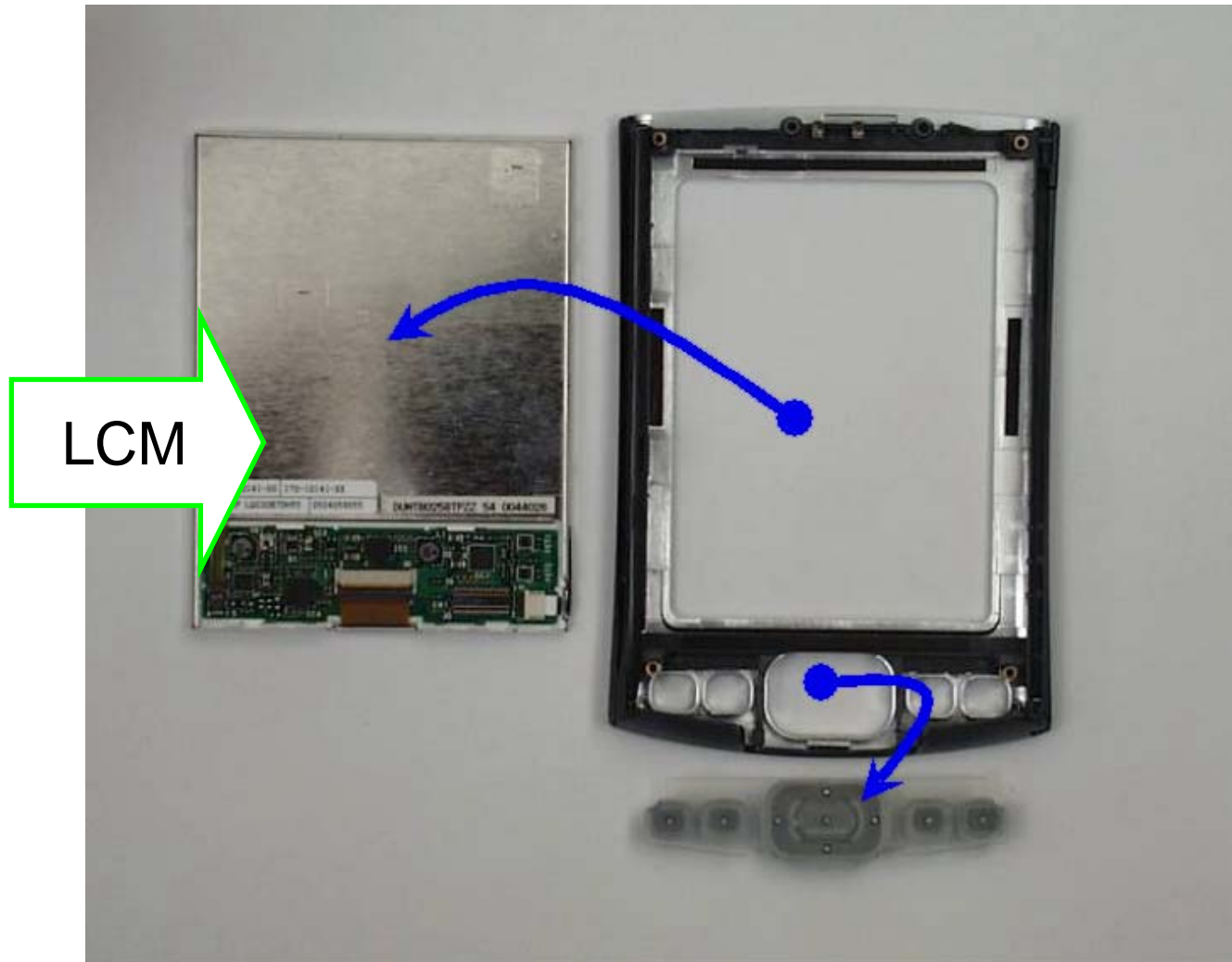
TE2.07 REMOVE TOP, BUTTON AND BATTERY CONNECTOR

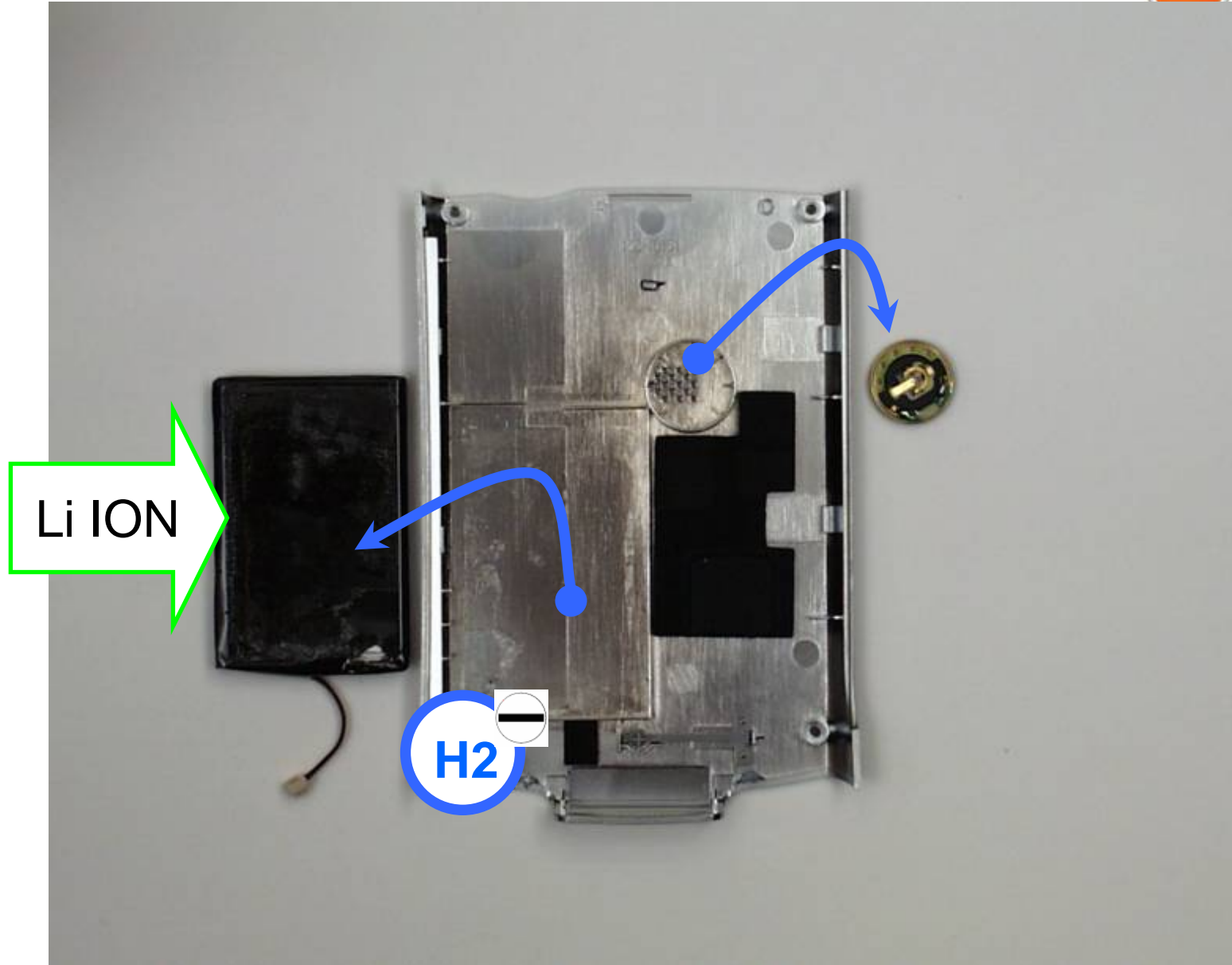


TE2.08 REMOVE LCM-FLEX AND PCBA



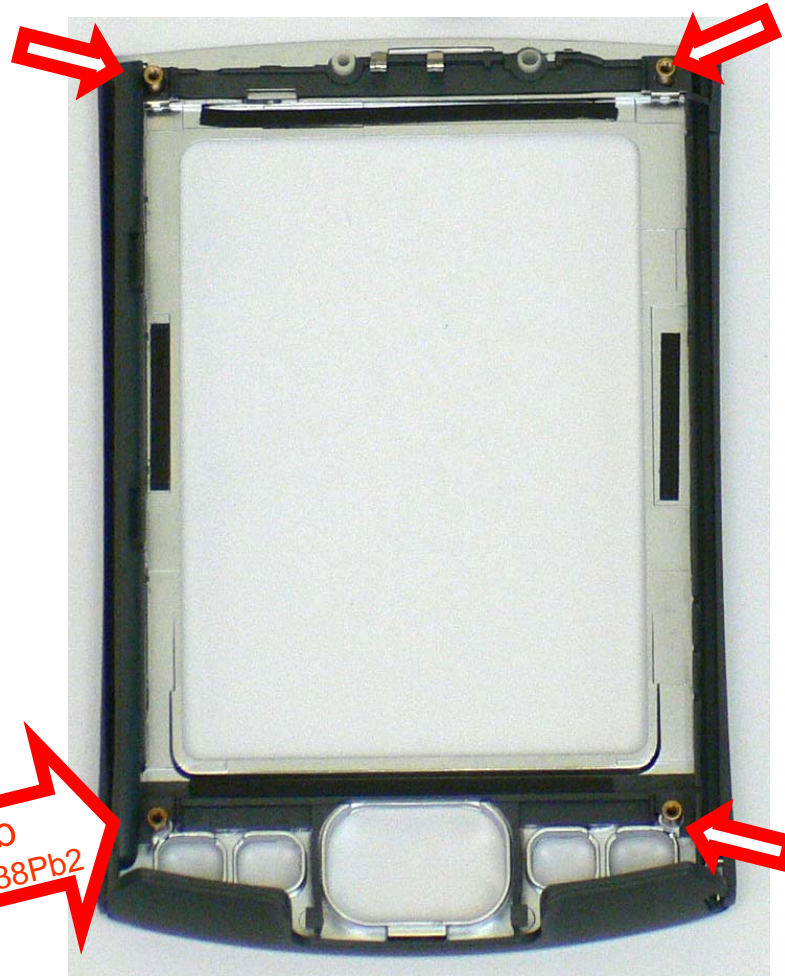
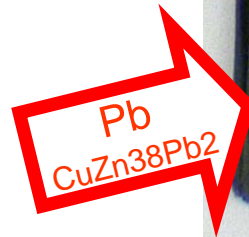
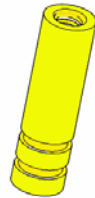
TE2.09 REMOVE LCM AND BUTTONS

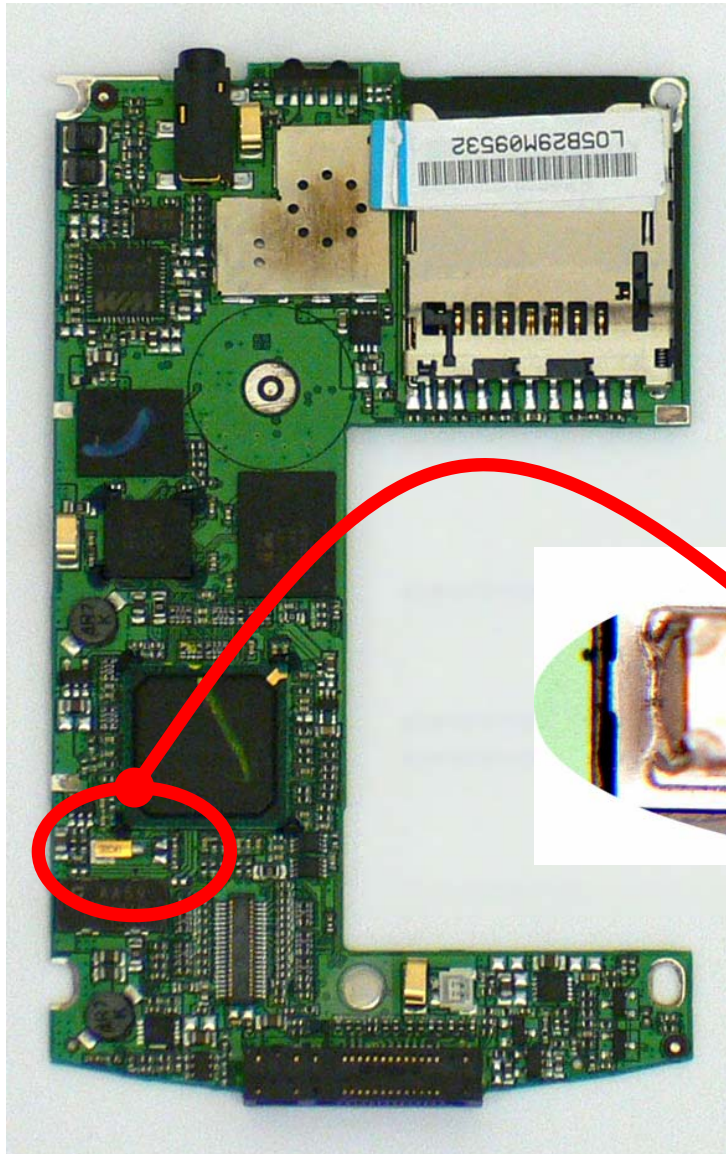




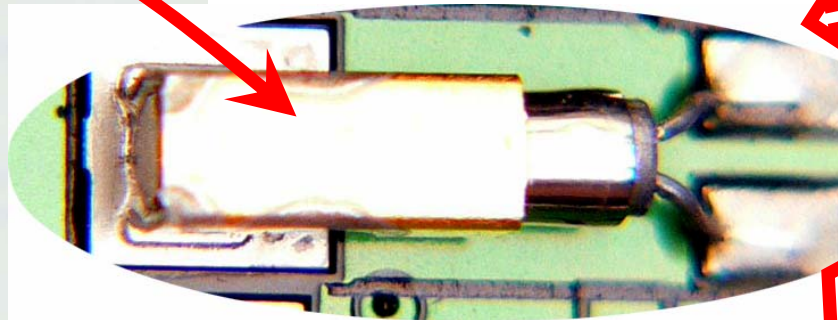


**Brass inserts (C3604) contain
< 4% Pb.**
**This is currently allowed per
RoHS Exemption 6.**





Analysis of these solder pads for ceramic crystals on PCBA may reflect the high temperature / **high Pb solder**. This is currently allowed per RoHS Exemption #7.



High Pb solder