

T650.01 IDENTIFICATION



T650.02 REQUIRED HANDTOOLS

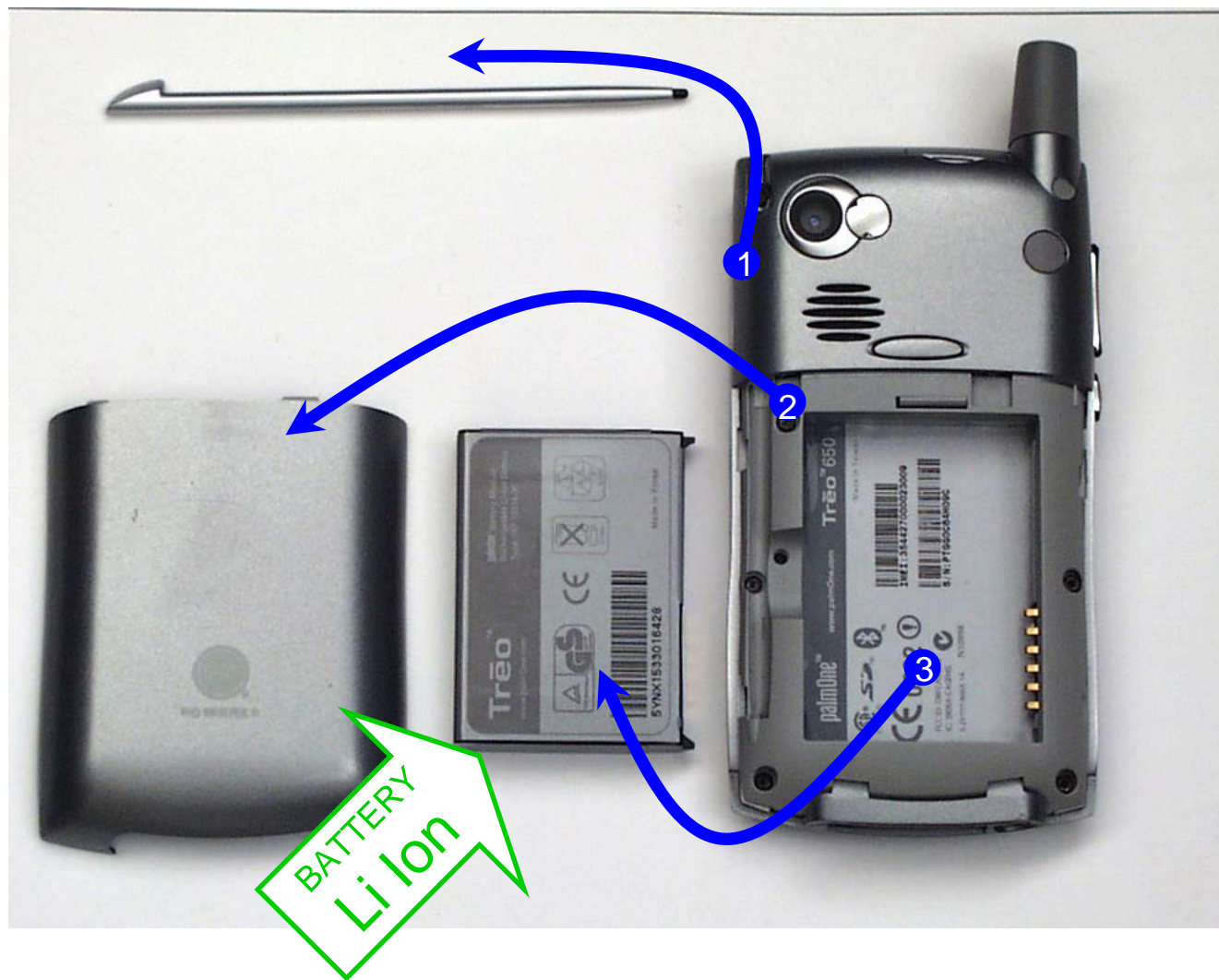


Disassembly Instructions for
Palm® Treo™ 650 smartphone

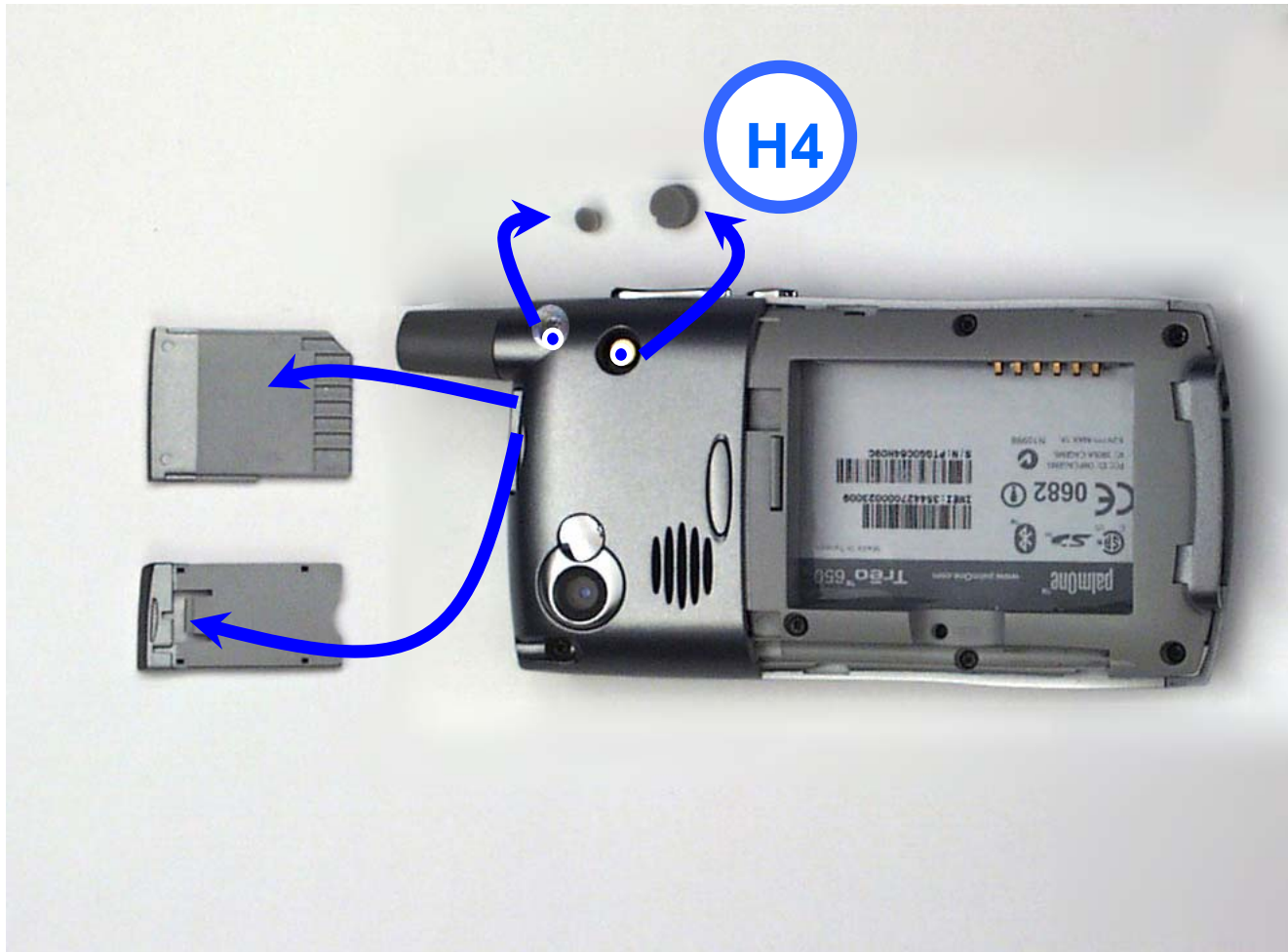
**Only authorized recyclers are permitted to use these disassembly instructions.
Any attempted disassembly by a user or unauthorized party will void the
product warranty and may irreparably damage the product.**

24MAR06

T650.03 REMOVE BATTERY AND STYLUS



T650.04 REMOVE INSERTS



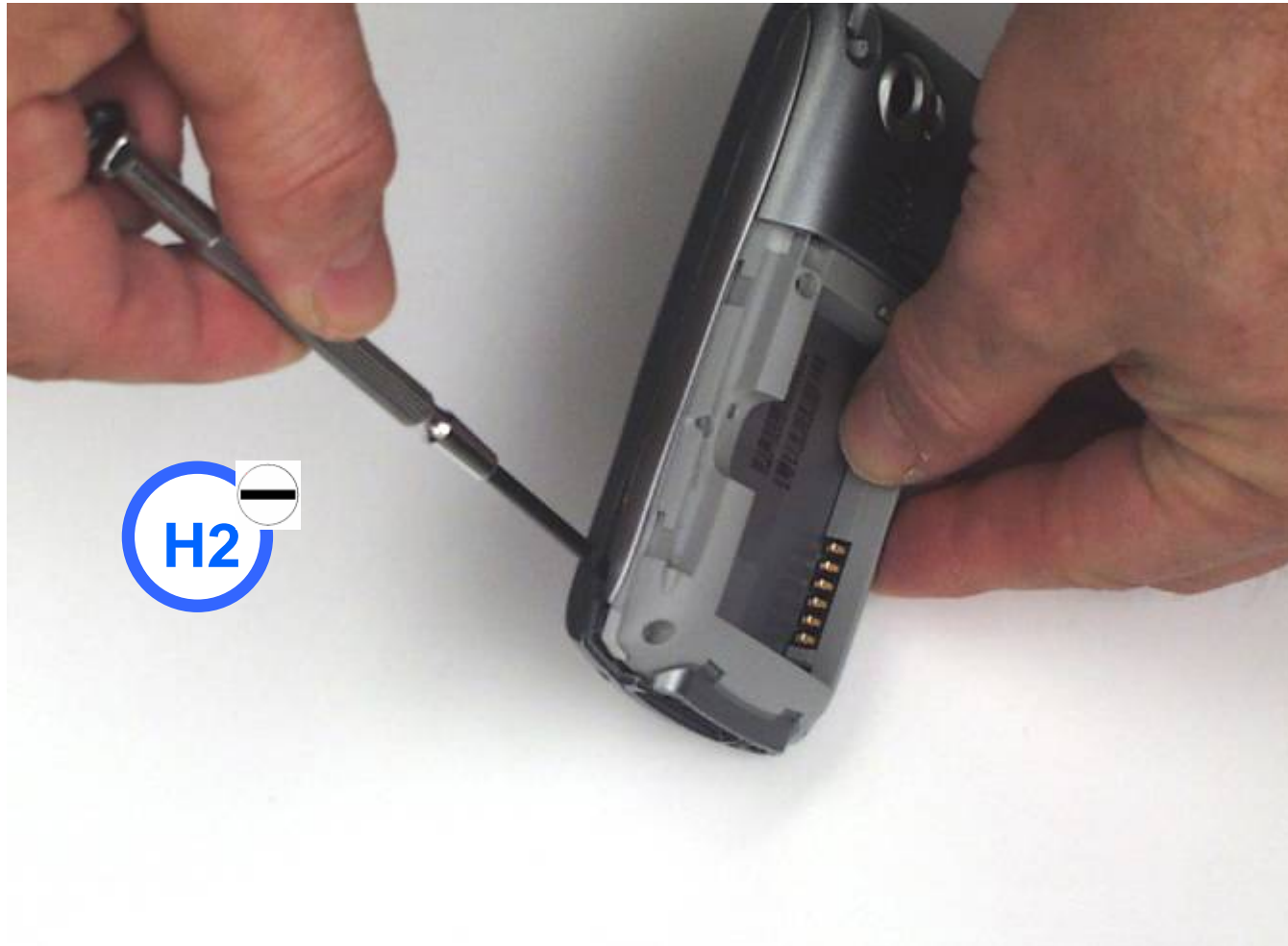
T650.05 REMOVE SCREWS (7)



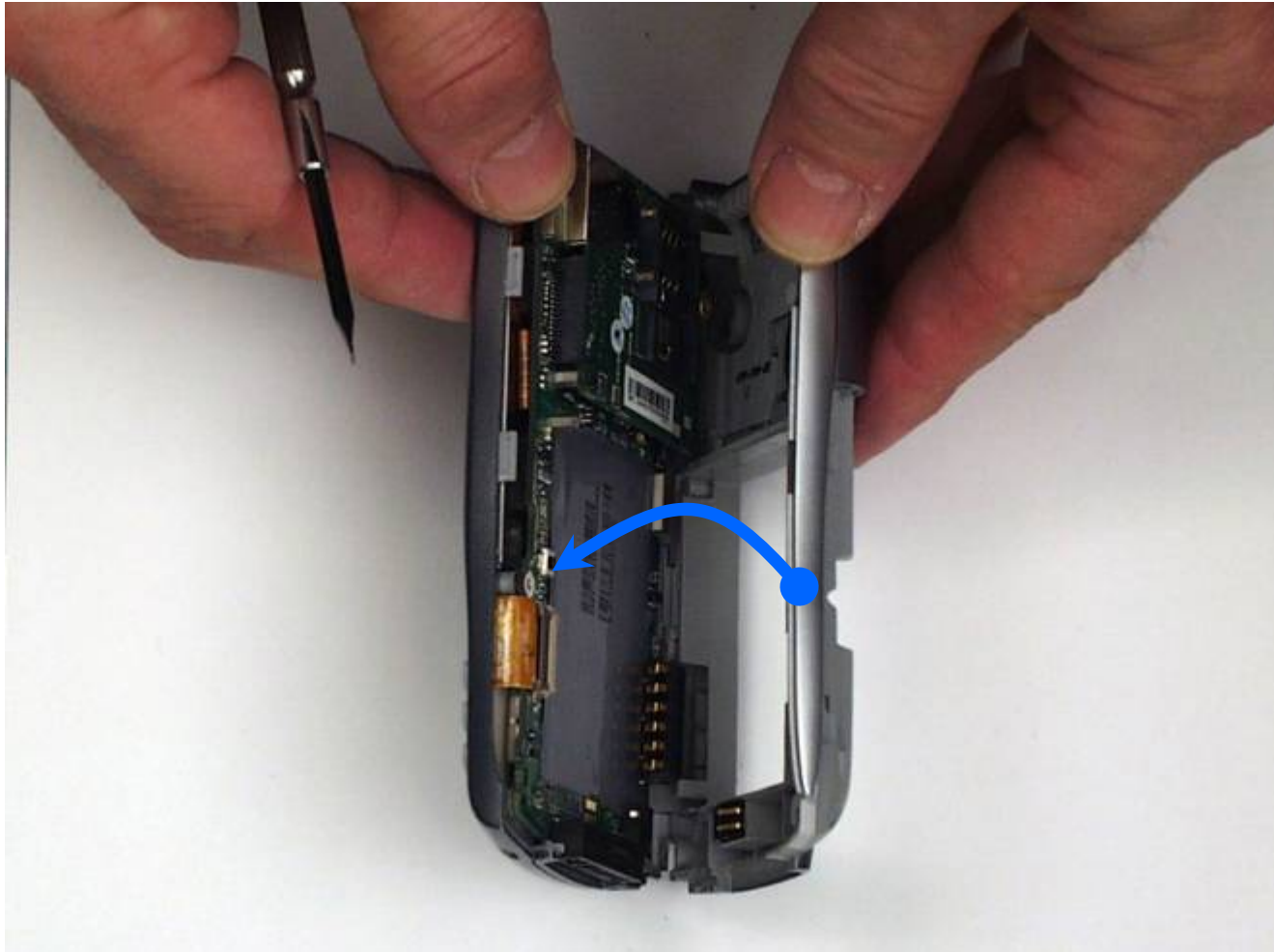
T650.06 REMOVE ANTENNA



T650.07 OPEN CASE



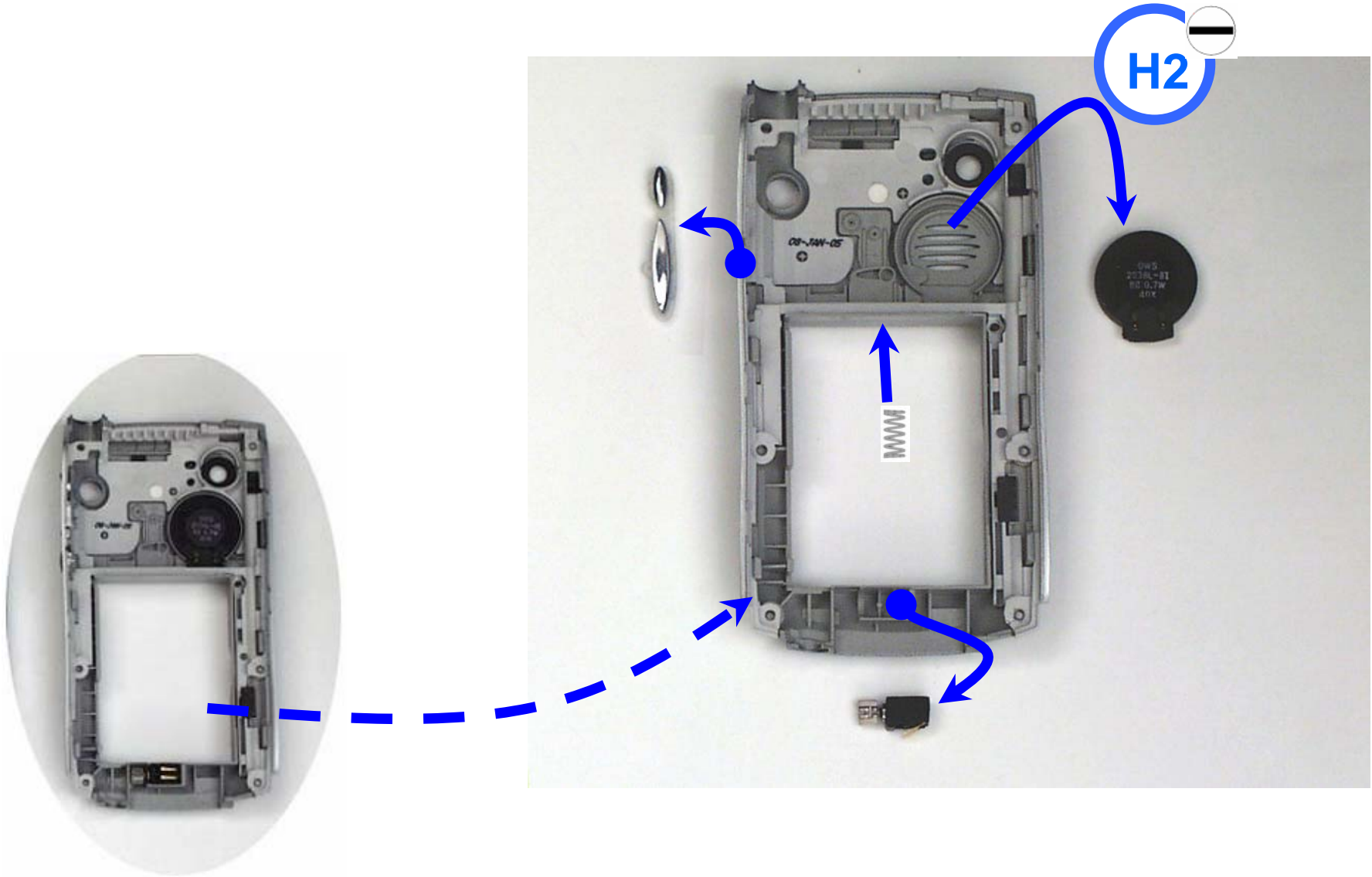
T650.08 REMOVE BACK COVER

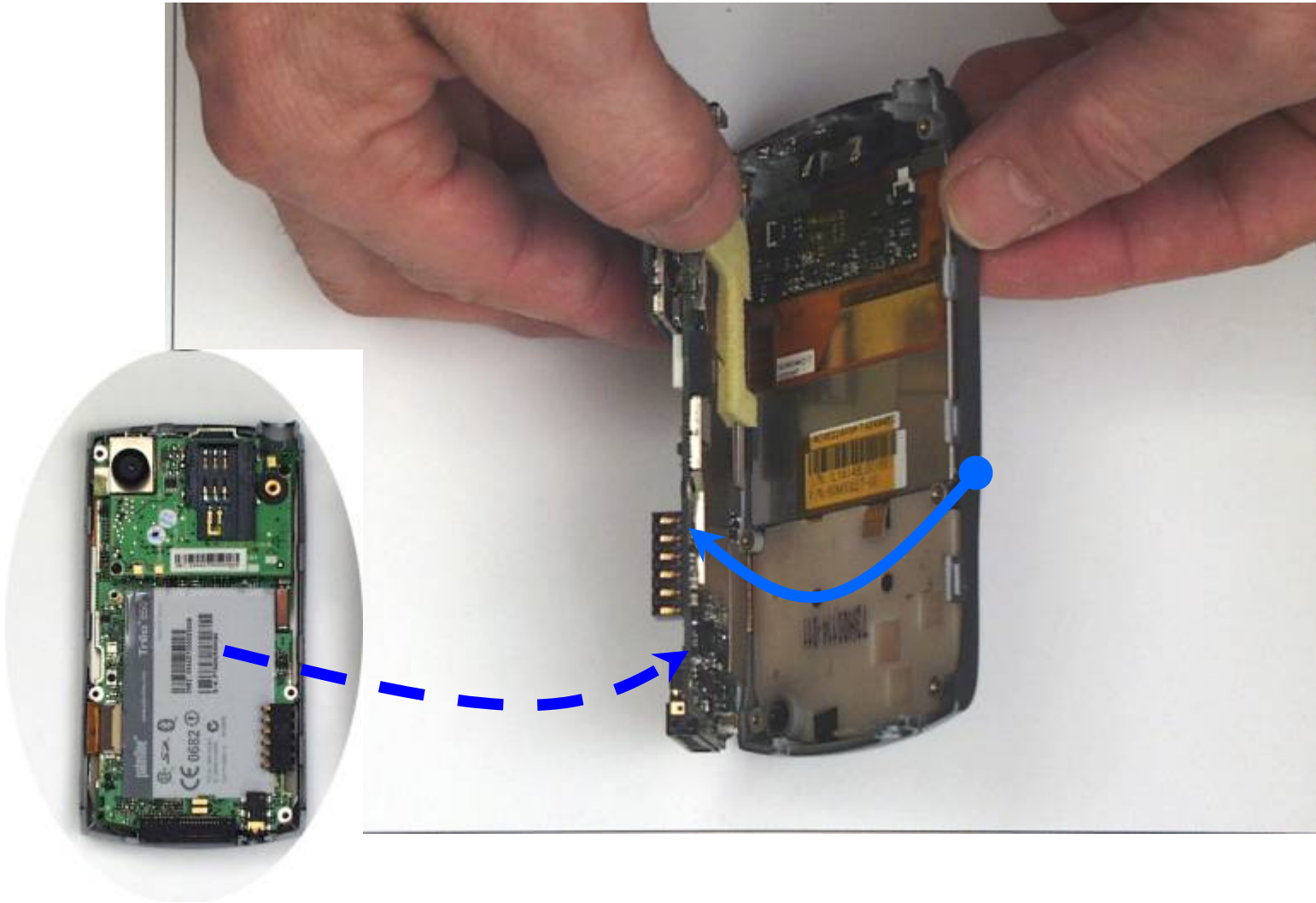


T650.09 REMOVE BACK COVER REMOVED

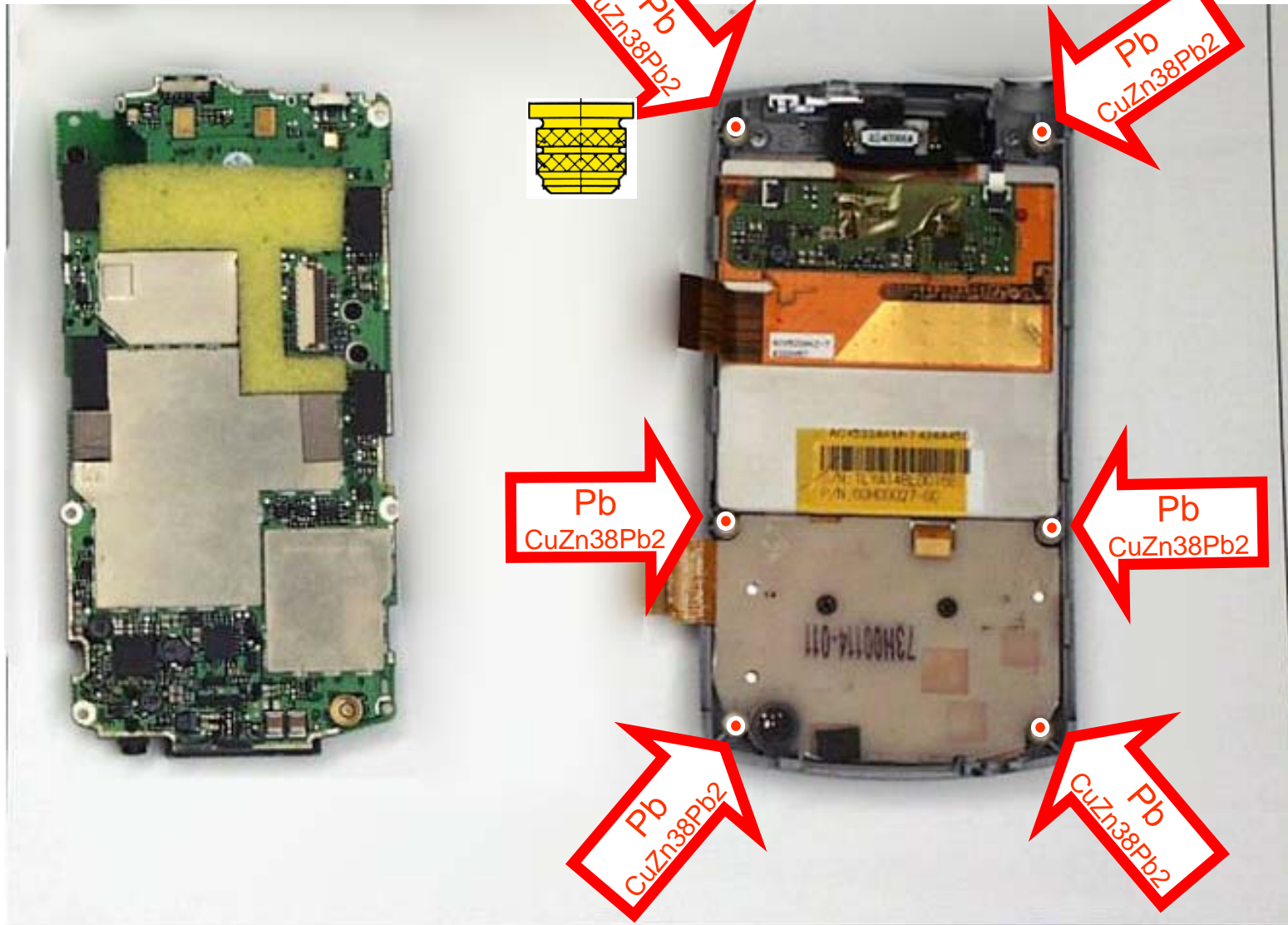


T650.10 REMOVE BUTTON AND VIBRATOR, PRY SPEAKER,





T650.12 PCBA REMOVED



Disassembly Instructions for
Palm® Treo™ 650 smartphone

Only authorized recyclers are permitted to use these disassembly instructions. Any attempted disassembly by a user or unauthorized party will void the product warranty and may irreparably damage the product.

24MAR06

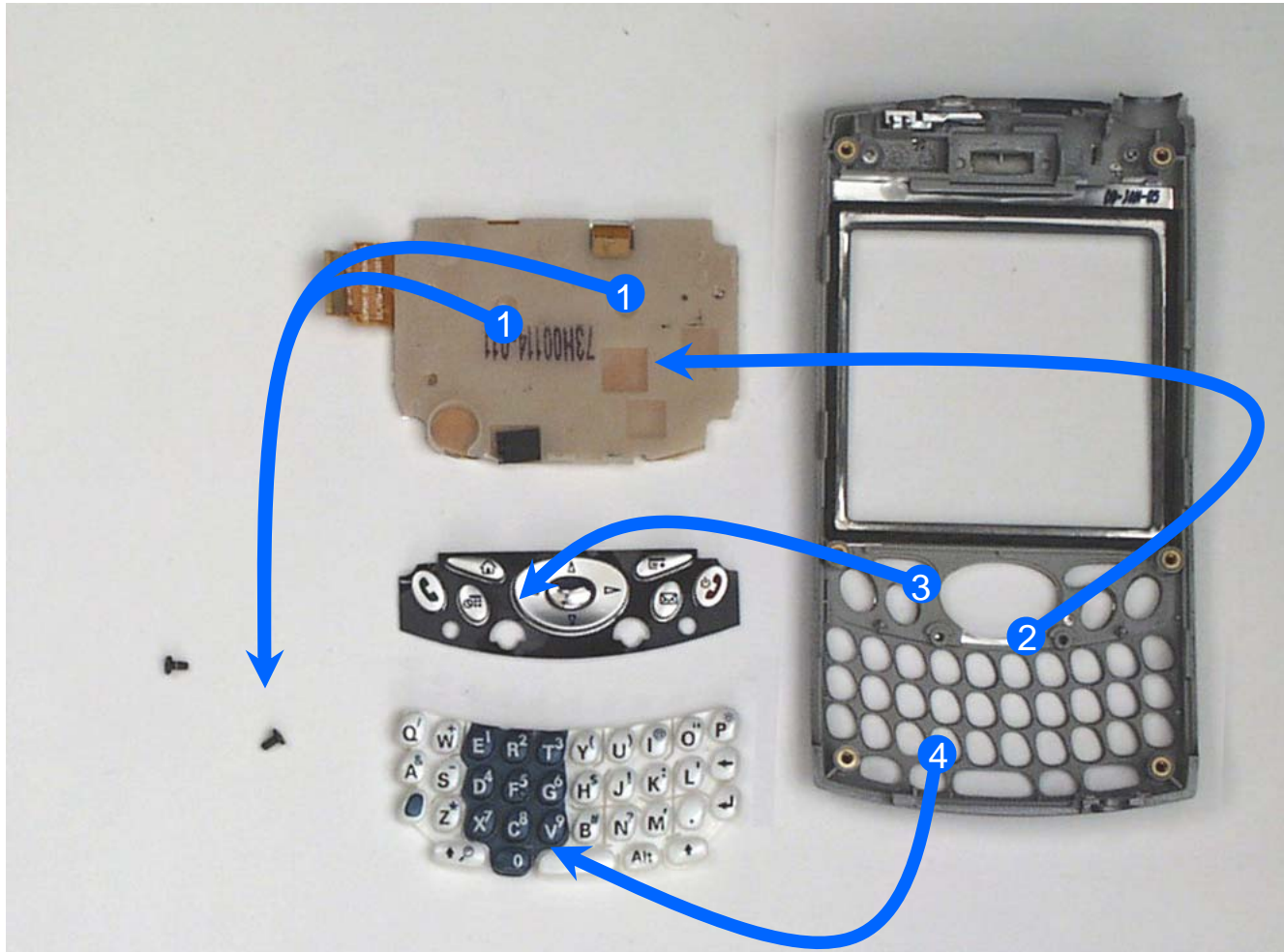
LCM



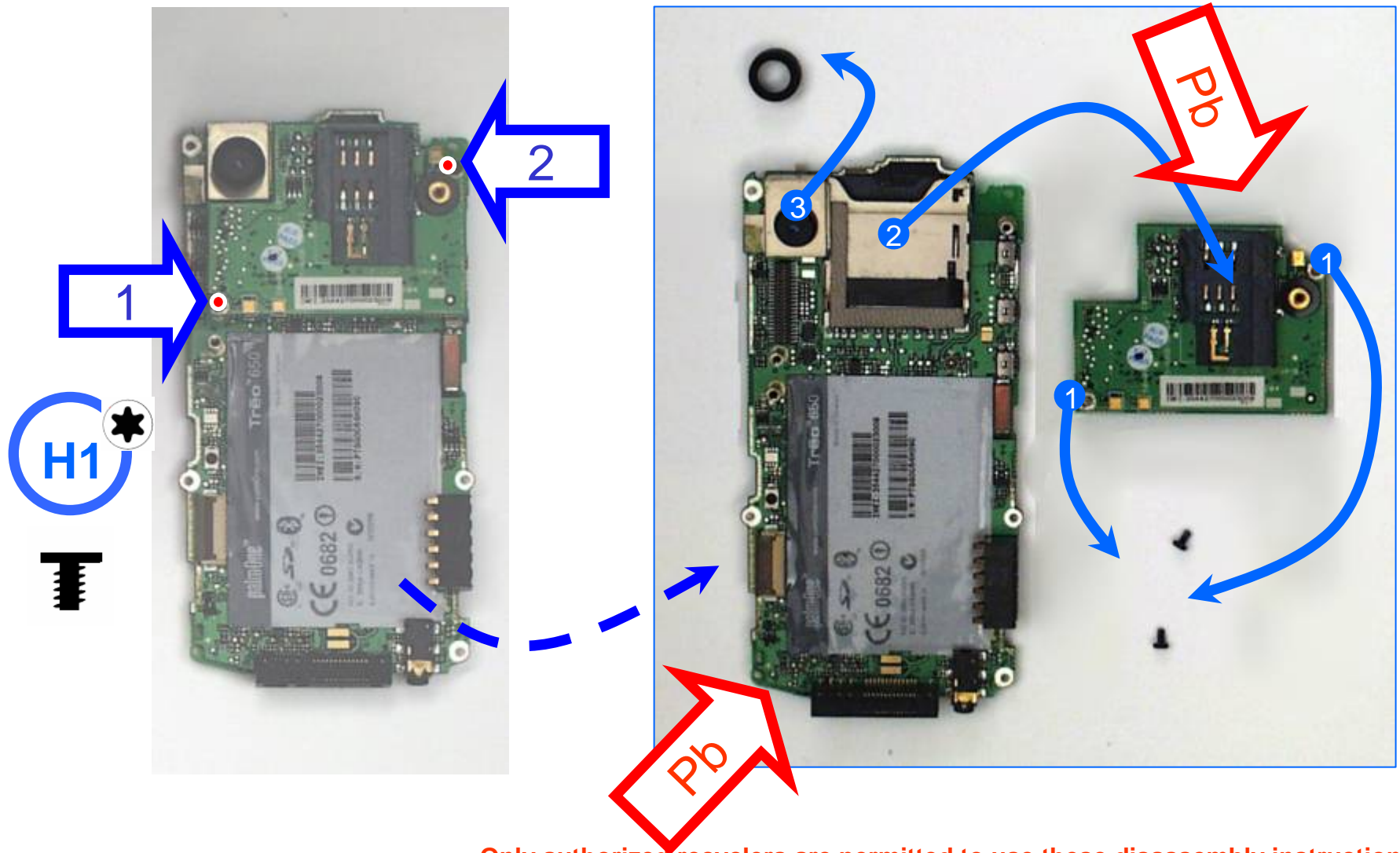
Only authorized recyclers are permitted to use these disassembly instructions. Any attempted disassembly by a user or unauthorized party will void the product warranty and may irreparably damage the product.

24MAR06

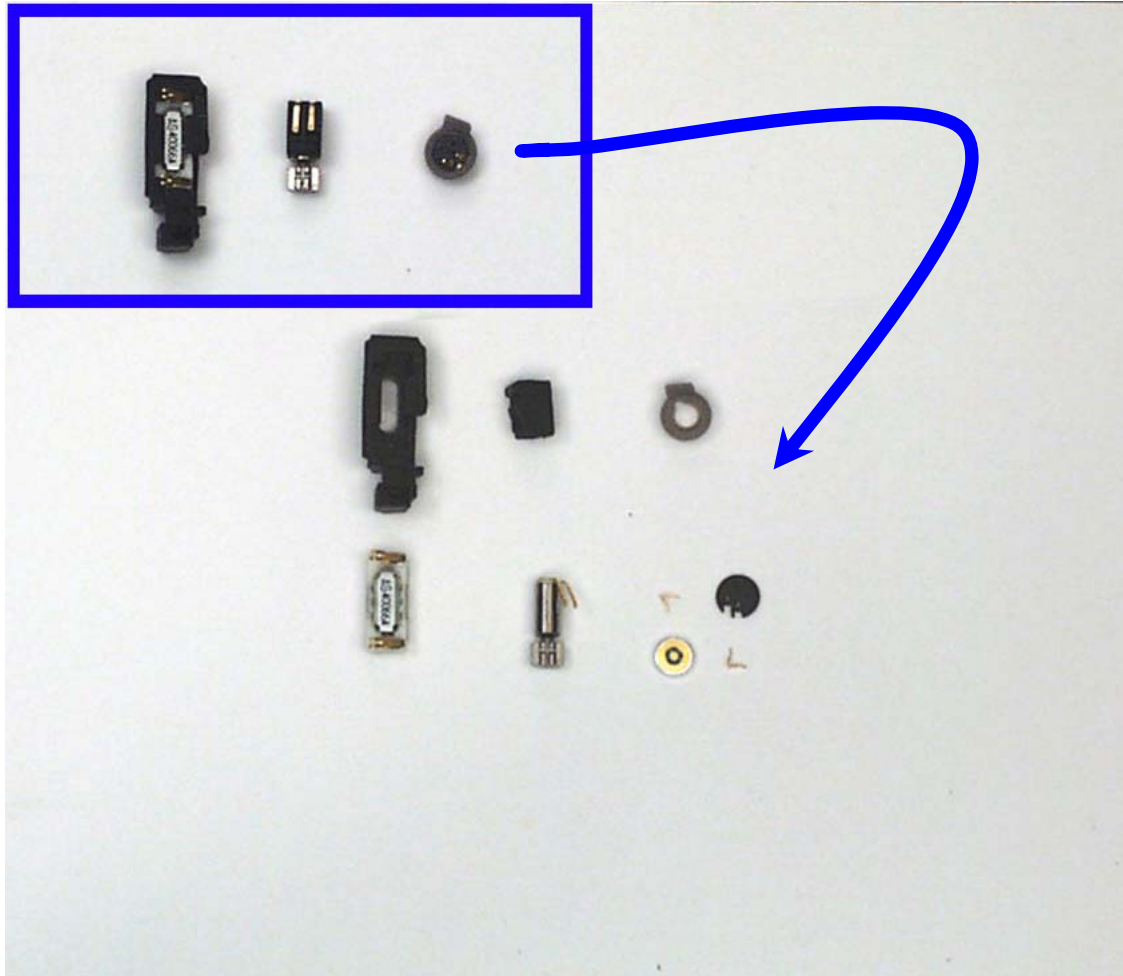
T650.14 REMOVE KEYPAD AND KEYS



T650.15 REMOVE RADIO



T650.16 REMOVE RUBBER BOOTS



T650.17 ALL COMPONENTS



Disassembly Instructions for
Palm® Treo™ 650 smartphone

Only authorized recyclers are permitted to use these disassembly instructions. Any attempted disassembly by a user or unauthorized party will void the product warranty and may irreparably damage the product.

24MAR06

METAL

COMPONENTS

PLASTIC

RUBBER

GLASS

PCBA