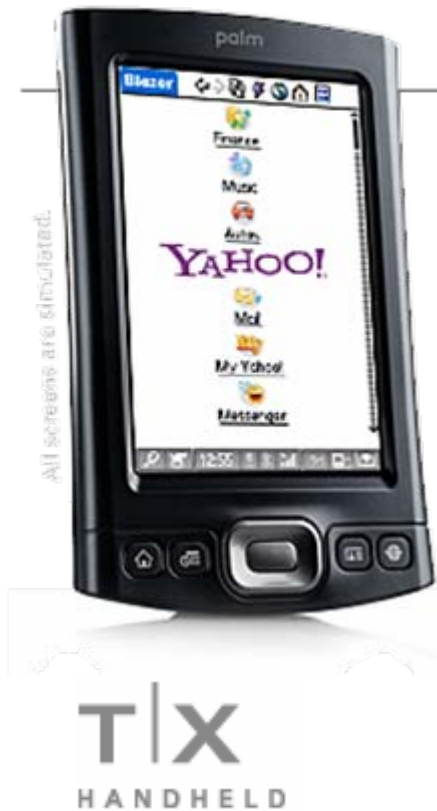


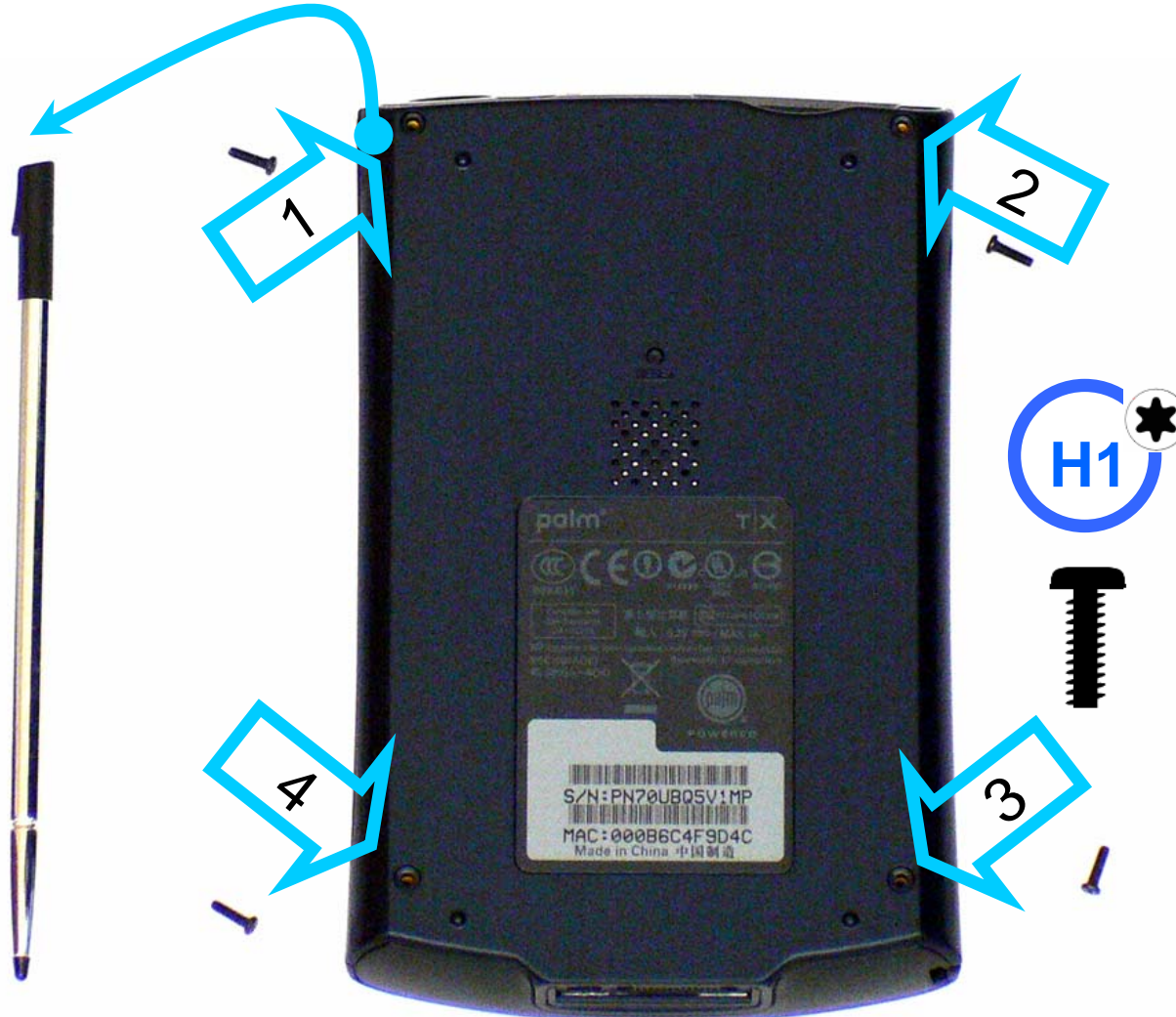
T|X.01 IDENTIFICATION



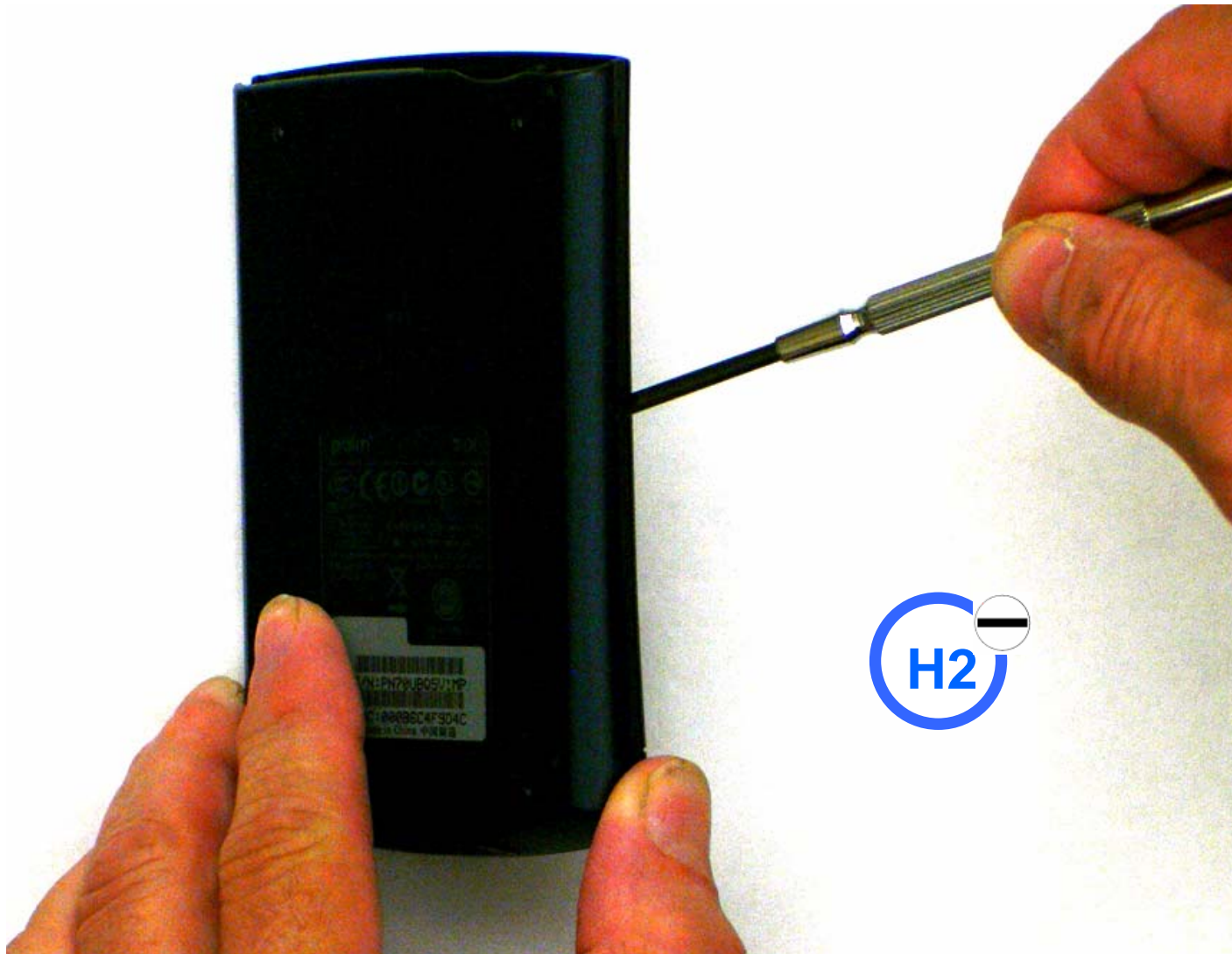
T|X.02 REQUIRED DISASSEMBLY TOOLS



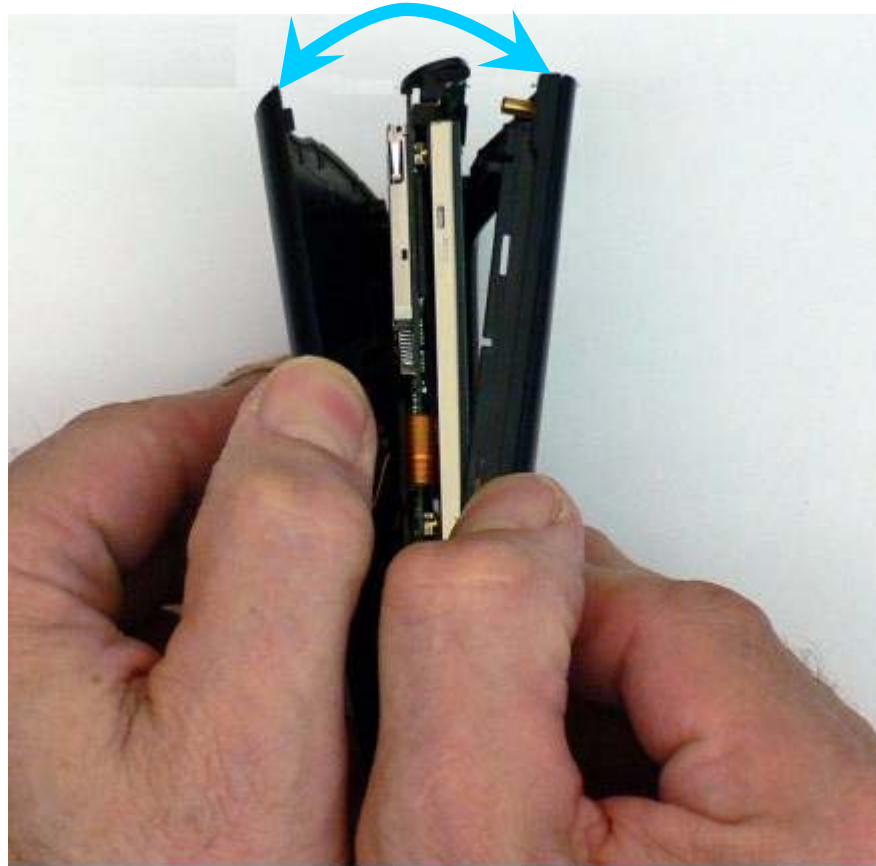
T|X.03 REMOVE STYLUS AND SCREWS (4)



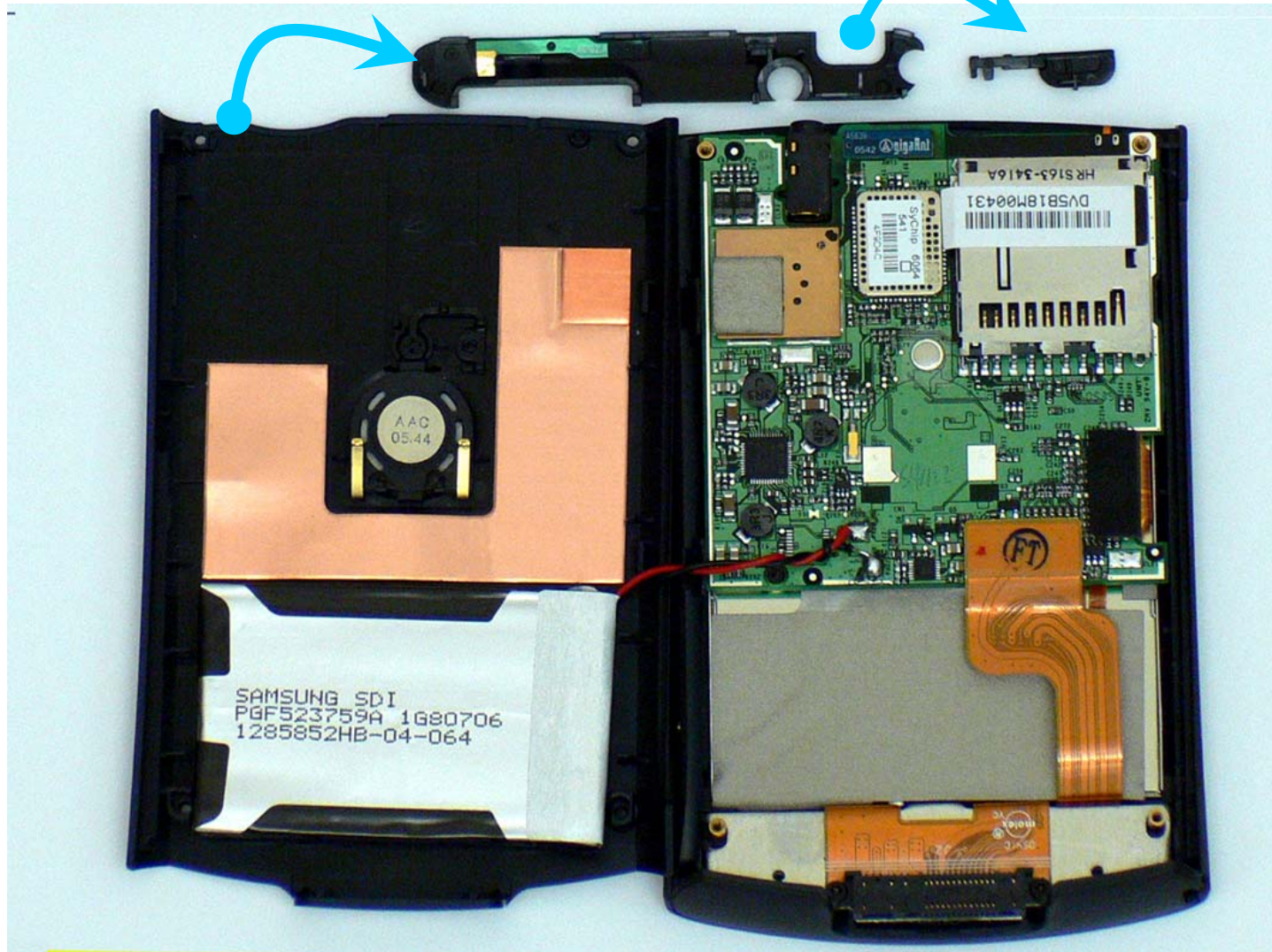
T|X.04 OPEN CASE



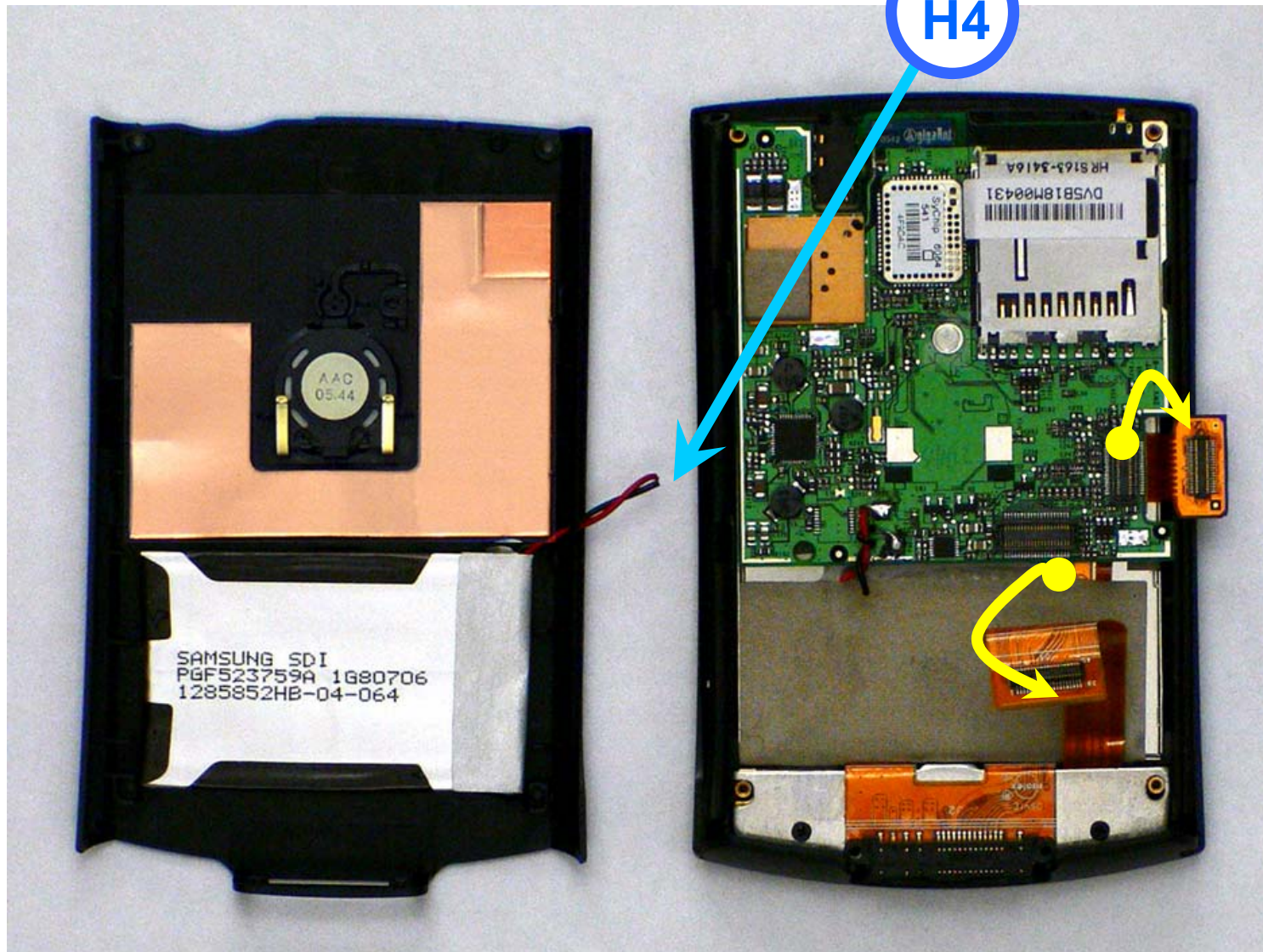
TX.05 REMOVE BACK COVER



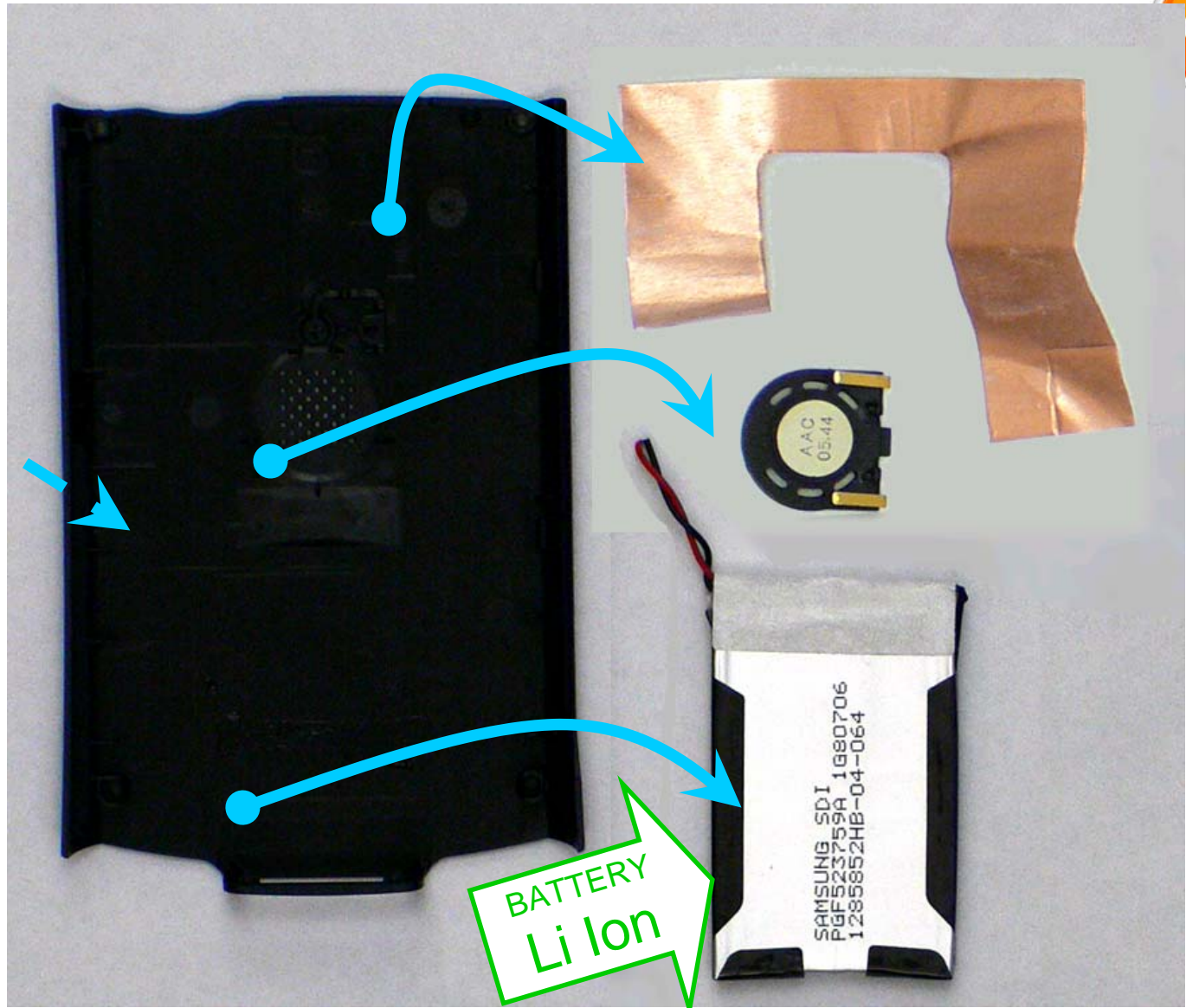
TX.06 REMOVE TOP AND POWER BUTTON; BATTERY



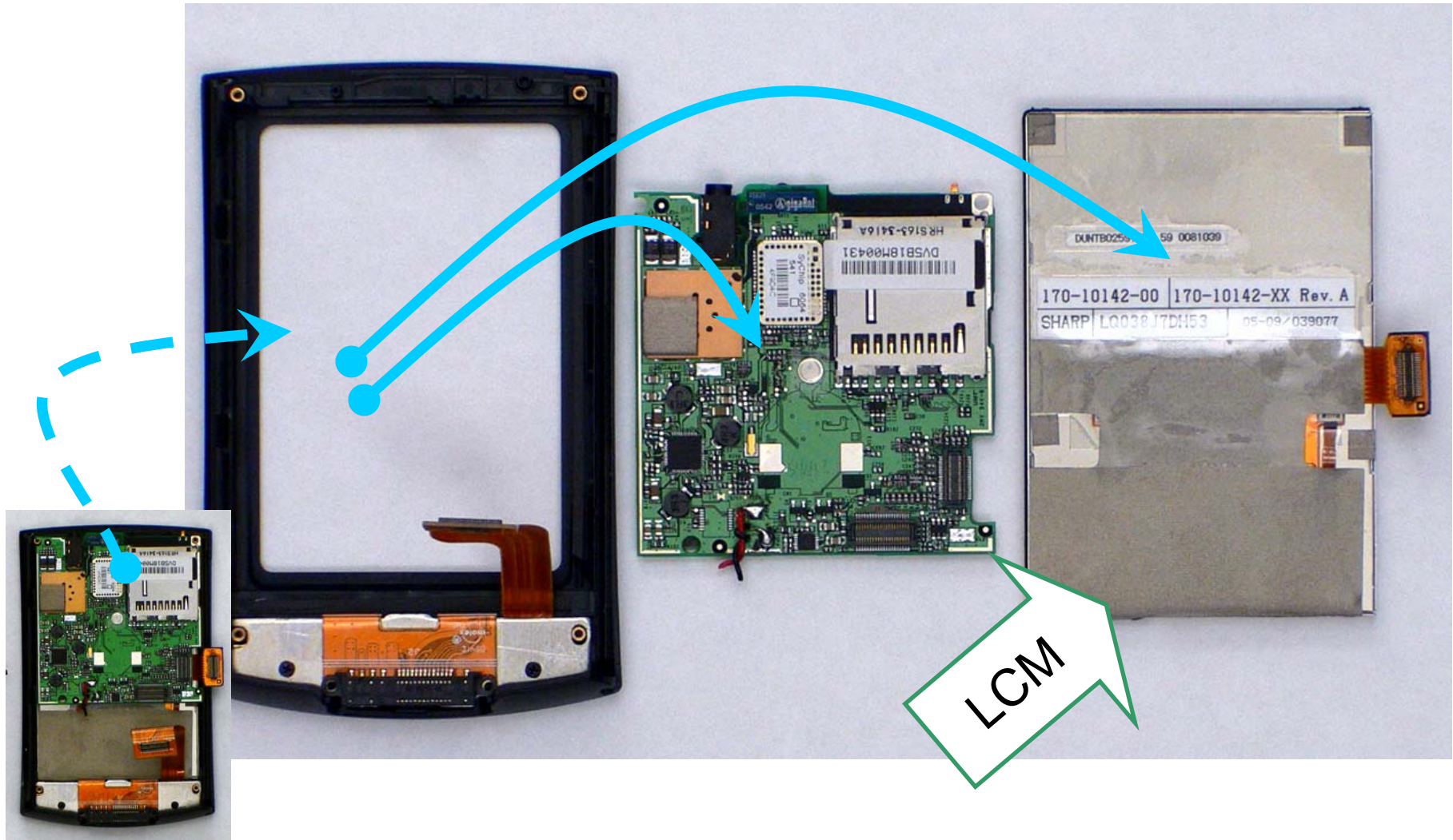
TX.07 CUT BATTERY WIRE, OPEN PCB CONNECTORS (2)



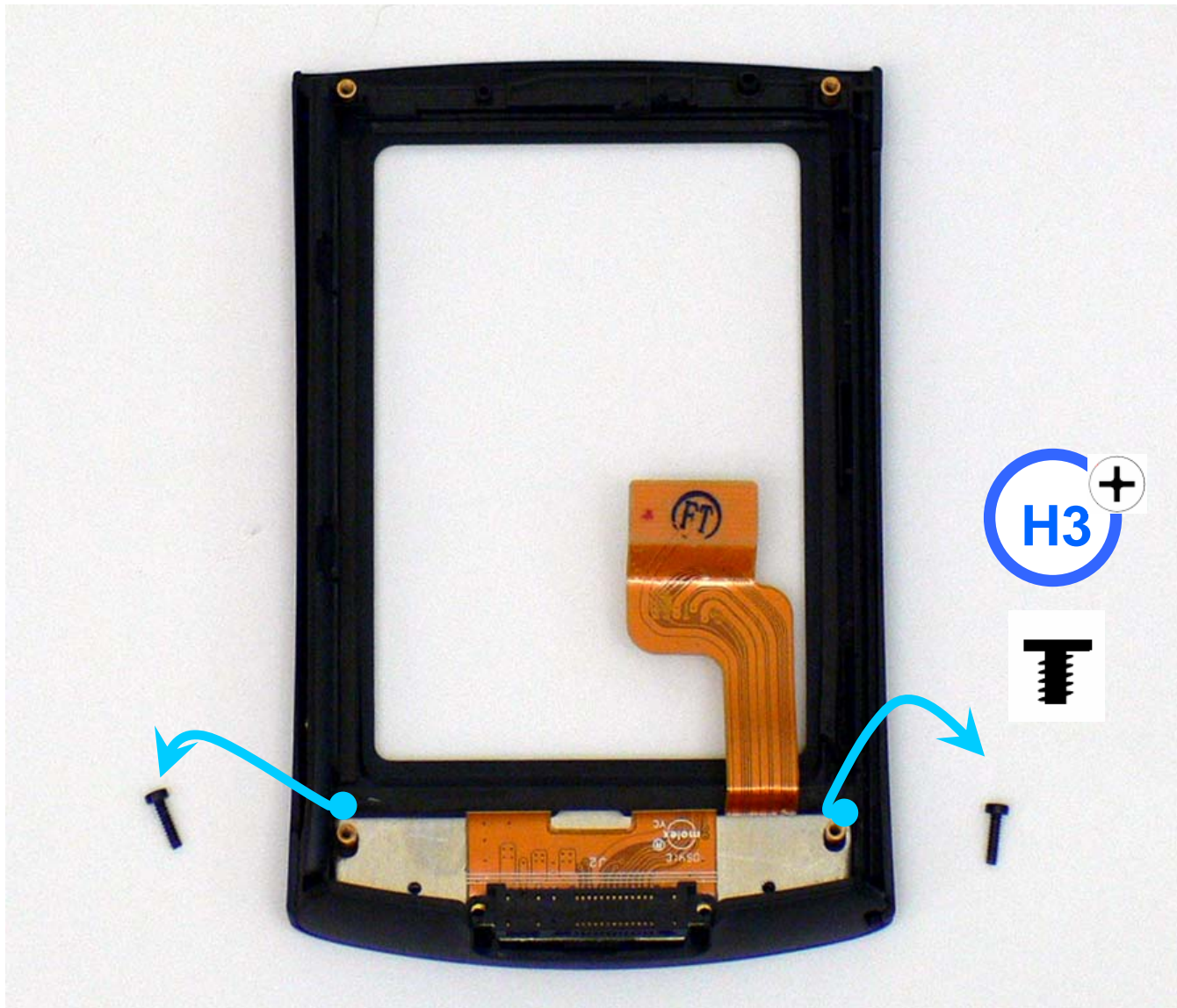
TX.08 REMOVE SPEAKER AND SHIELD FROM BACK



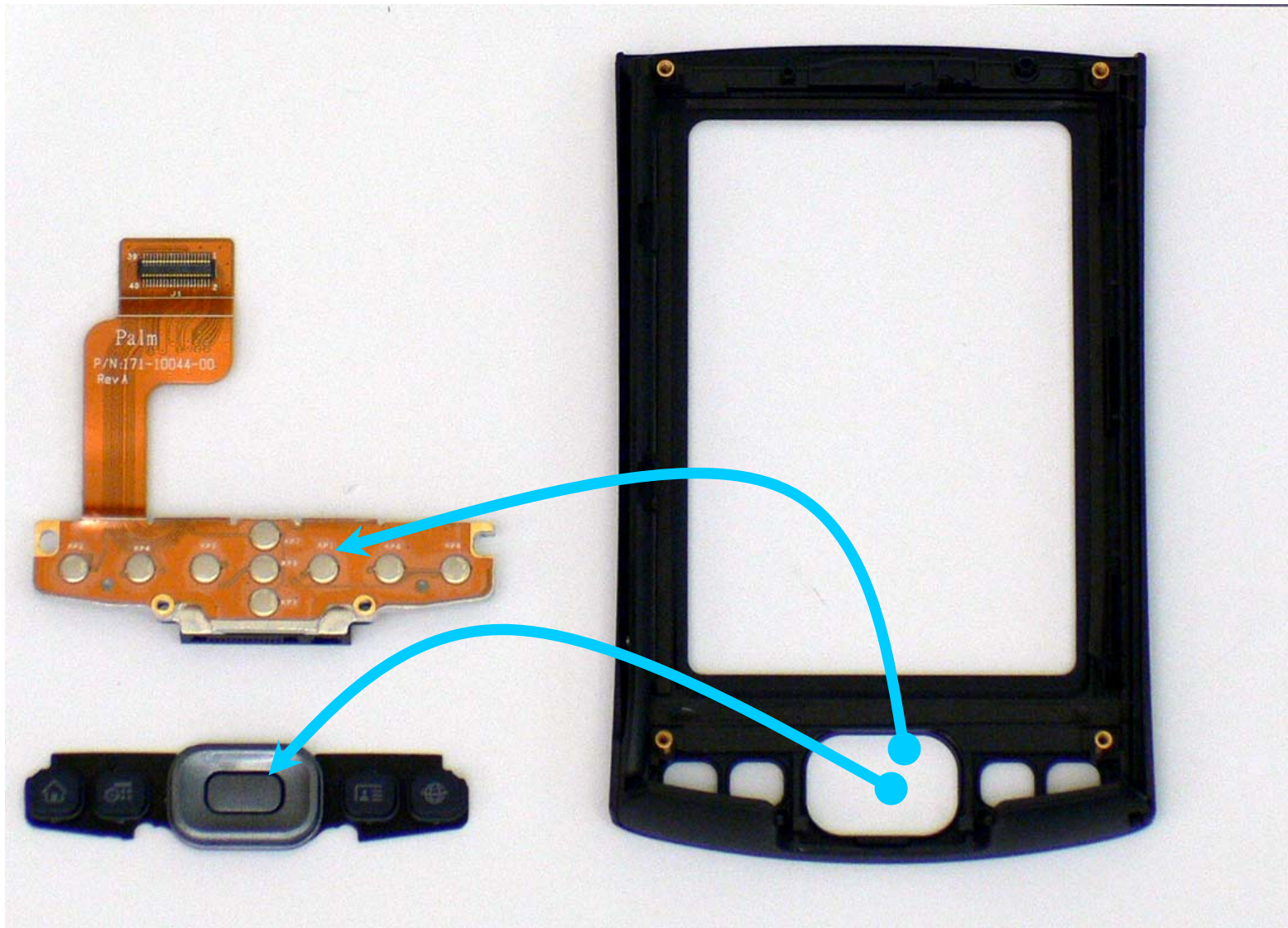
T|X.09 REMOVE DISPLAY, PCBA AND BATTERY FROM FRONT COVER



T|X.10 REMOVE SCREWS (2) HOLDING KEYPAD



T|X.11 REMOVE LCM AND BUTTONS



TX.12 ALL COMPONENTS



Disassembly Instructions for
Palm® TX handheld

Only authorized recyclers are permitted to use these disassembly instructions. Any attempted disassembly by a user or unauthorized party will void the product warranty and may irreparably damage the product.

22SEPT2006

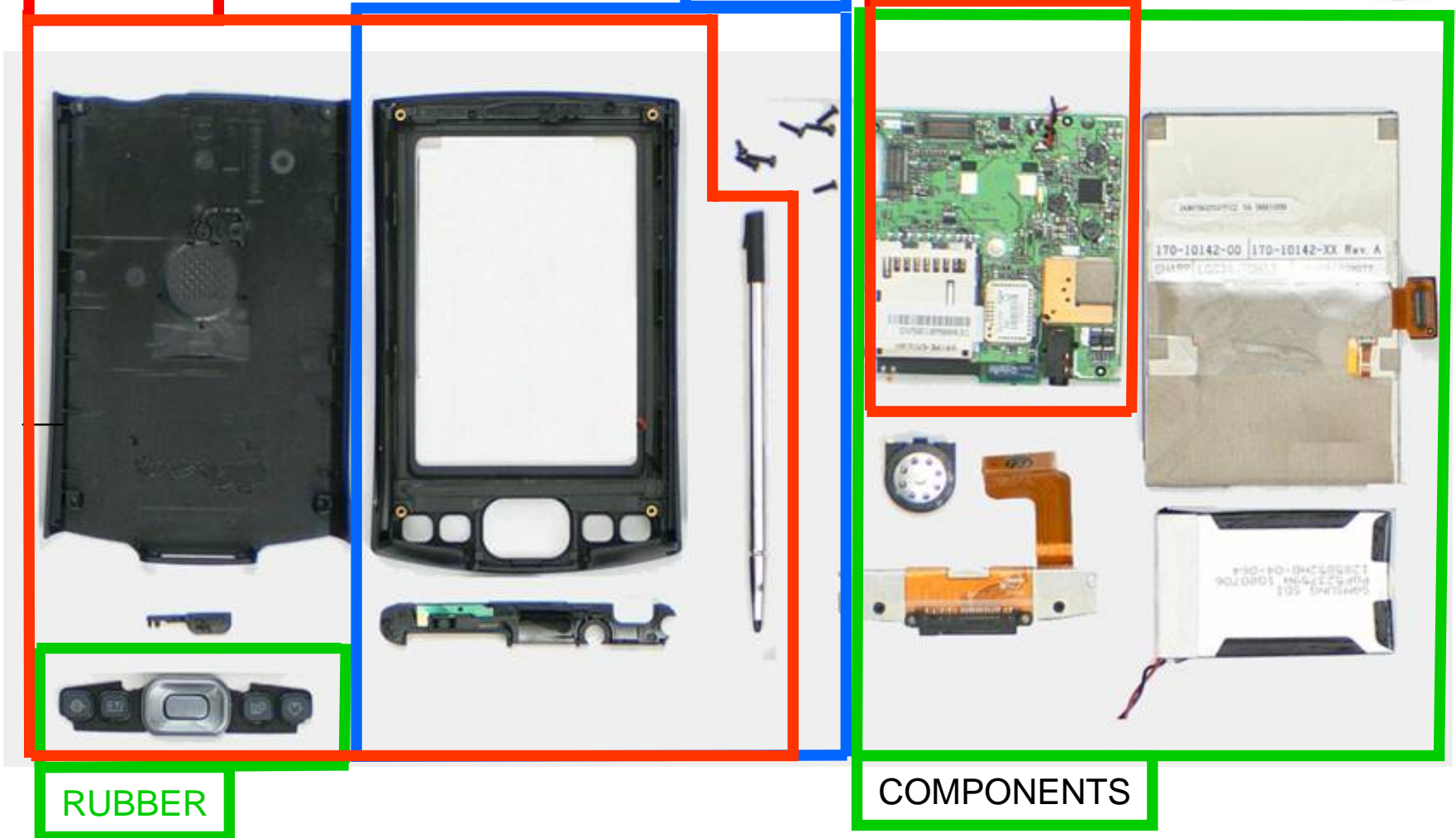
TX.13 ALL COMPONENTS - MATERIALS



PLASTIC

METAL

PCBA



RUBBER

COMPONENTS

TX.15 RoHS EXEMPTIONS – BRASS INSERTS (4)



Brass inserts (C3604) contain
< 4% **Pb**.
This is currently allowed per
RoHS Exemption 6.



TX.16 RoHS EXEMPTIONS – CERAMIC CRYSTAL



Analysis of these solder pads for ceramic crystals on PCBA may reflect the high temperature / **high Pb solder**.

This is currently allowed per RoHS Exemption #7.

