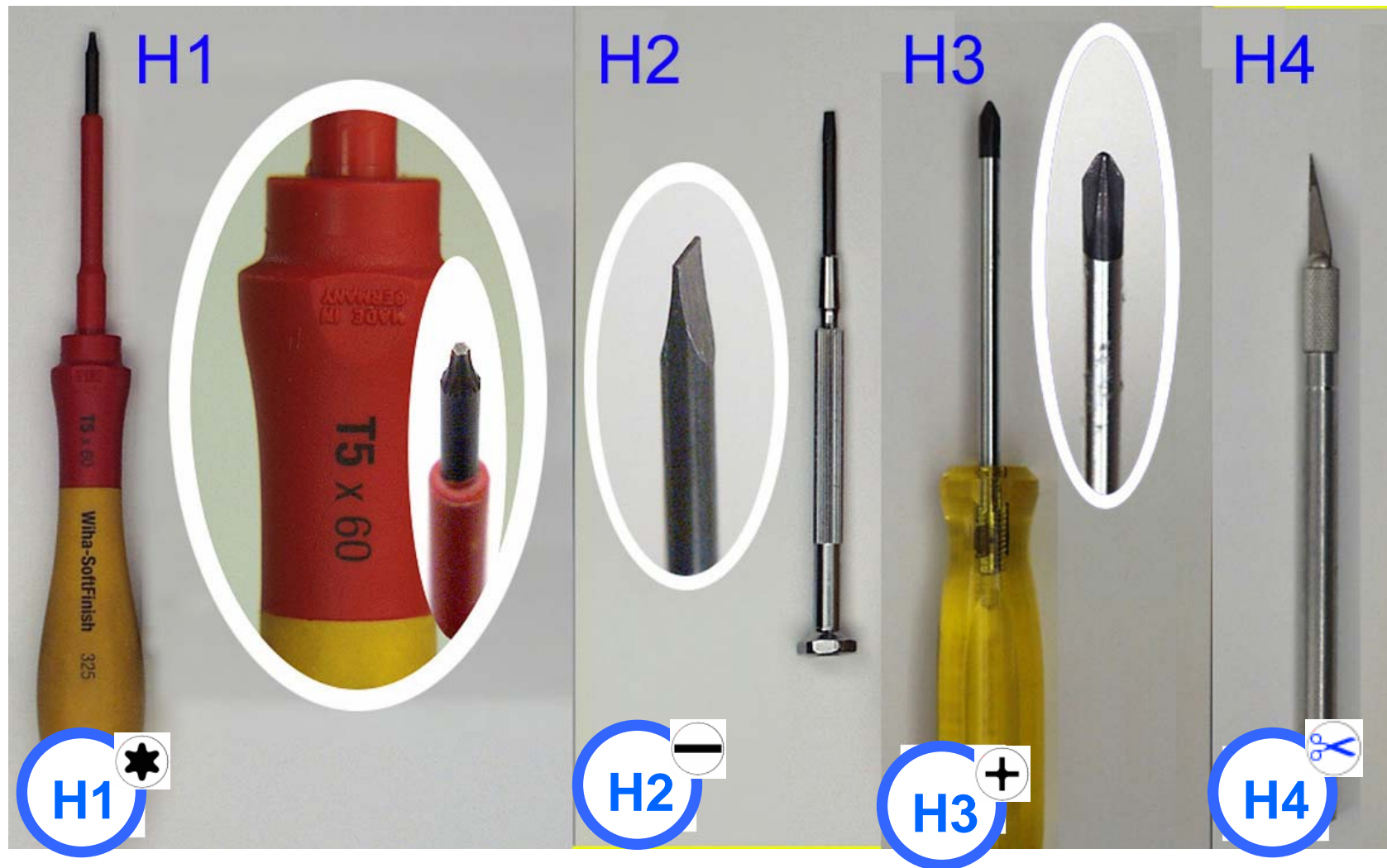




Z22.01 PRODUCT IDENTIFICATION – Zire 22

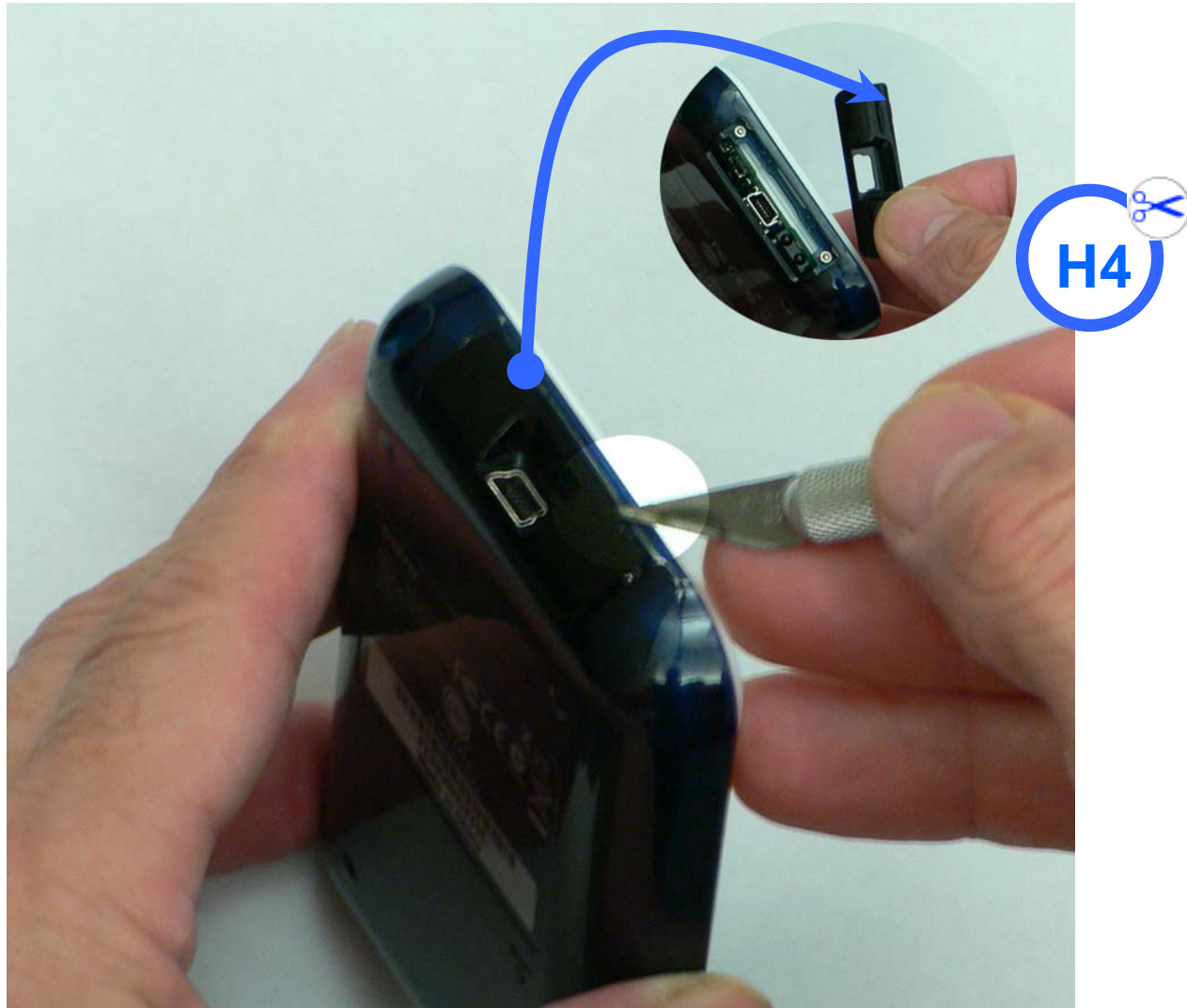




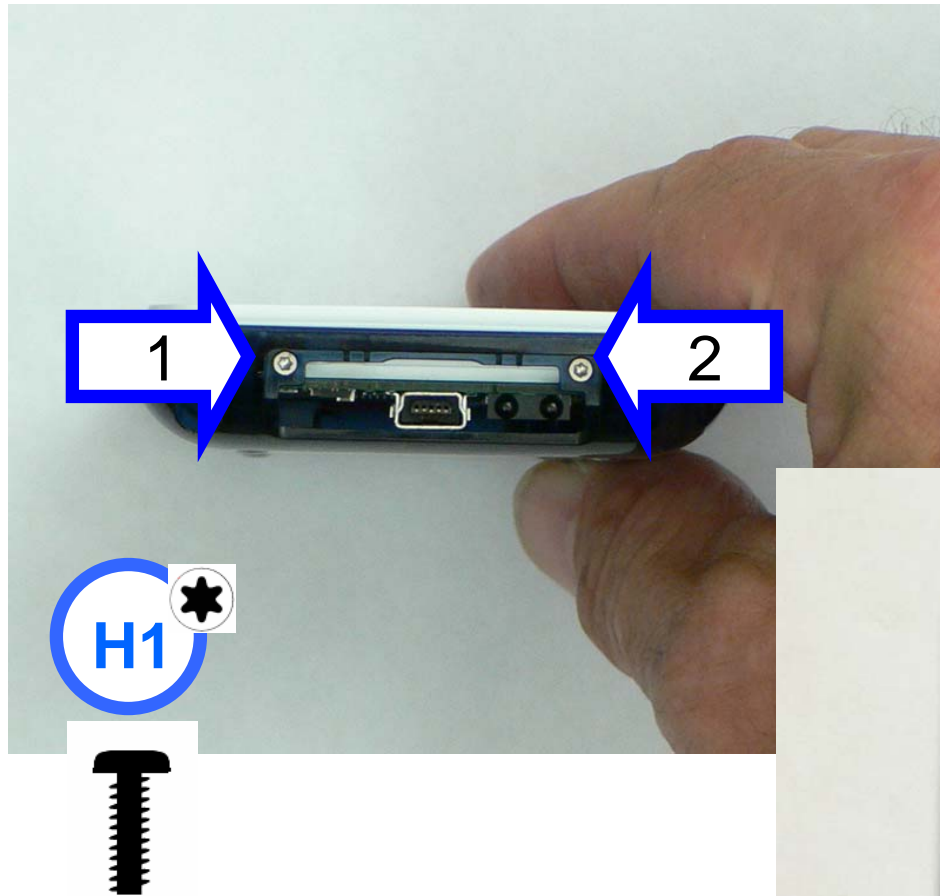
Z22.03 REMOVE STYLUS



Z22.04 REMOVE IrDA COVER



Z22.05 REMOVE TOP SCREWS (2)

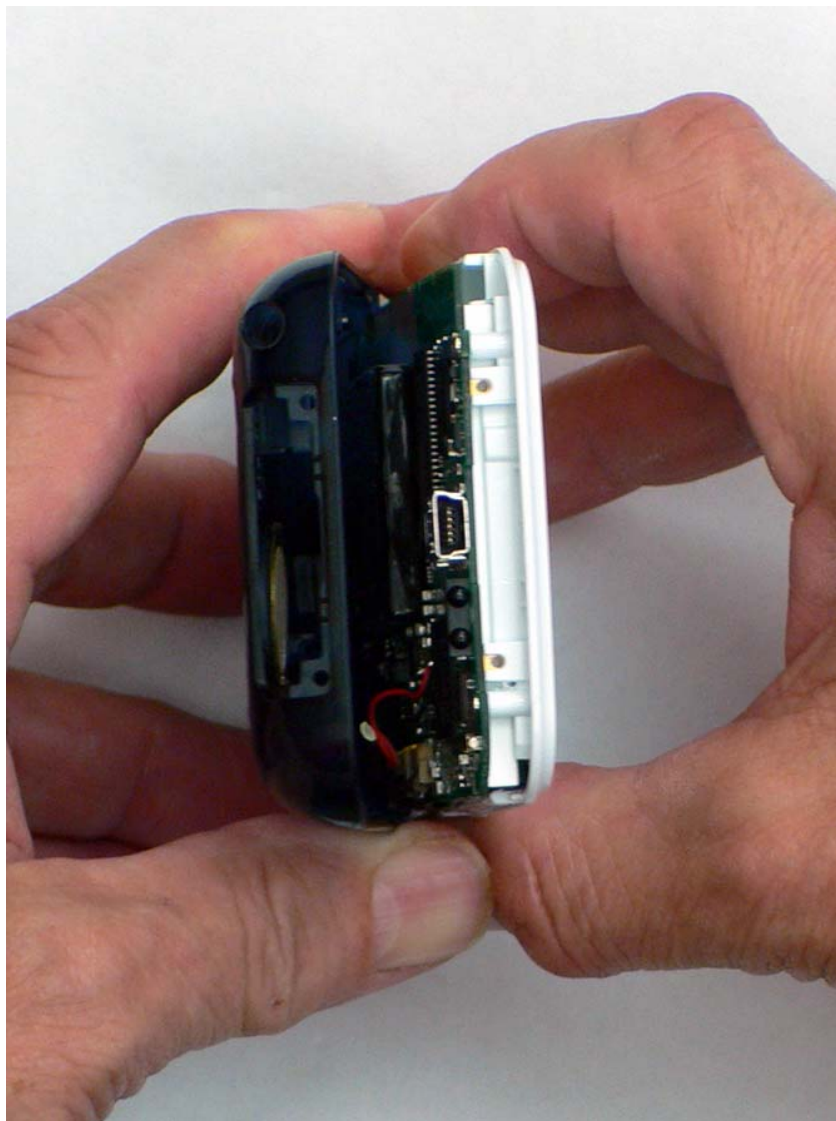


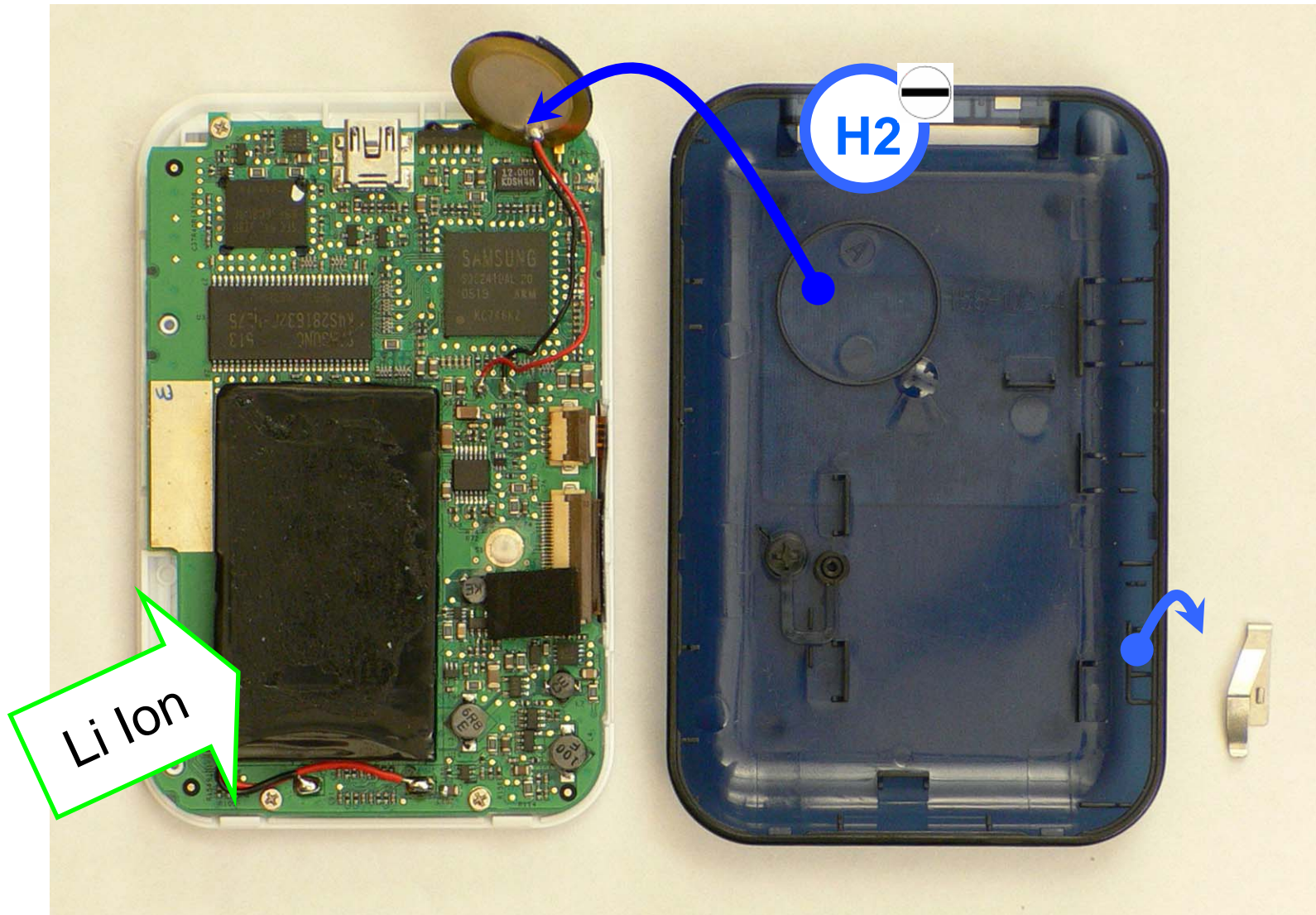


Z22.06 OPEN CASE

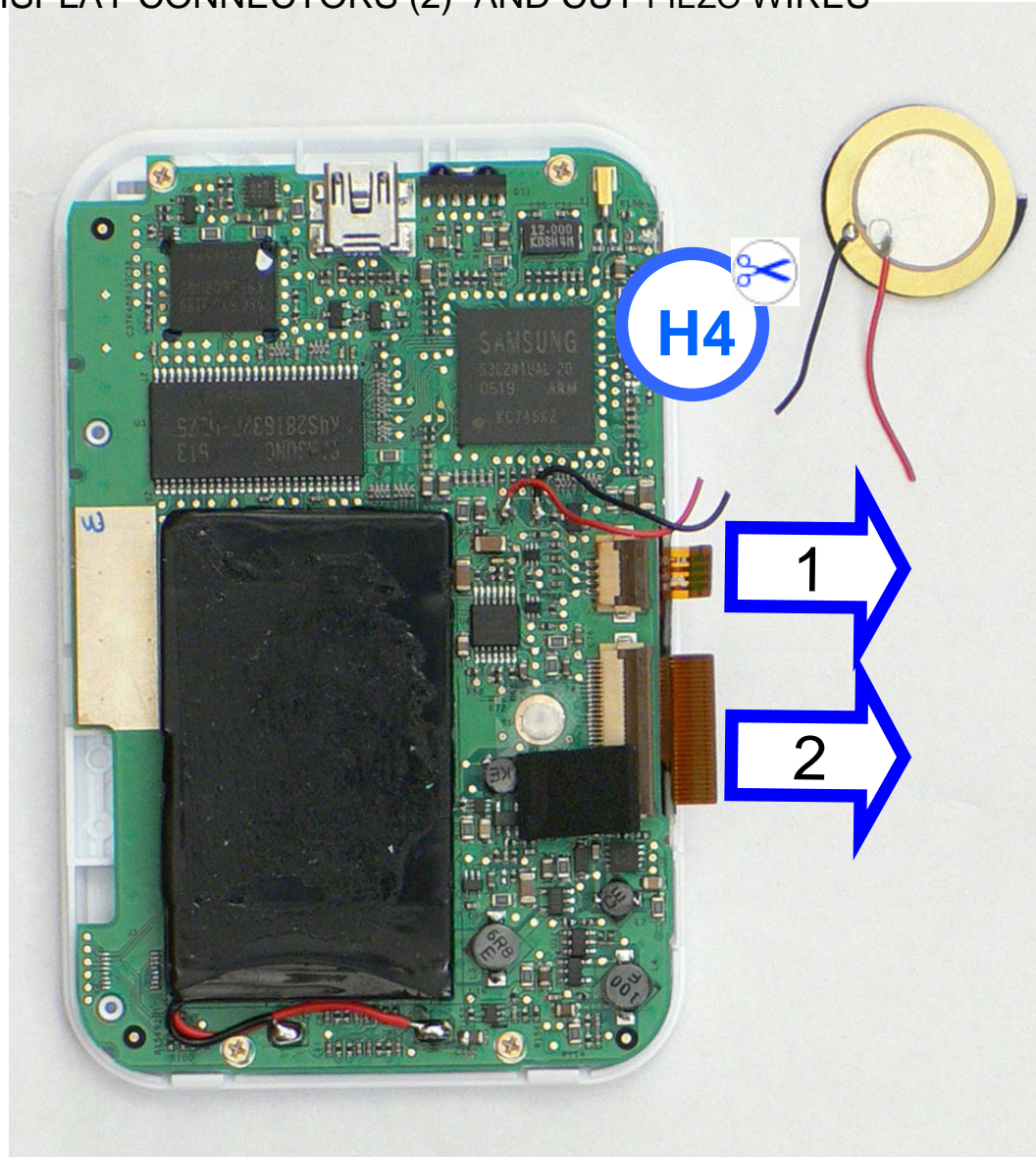


Z22.07 REMOVE BACK COVER





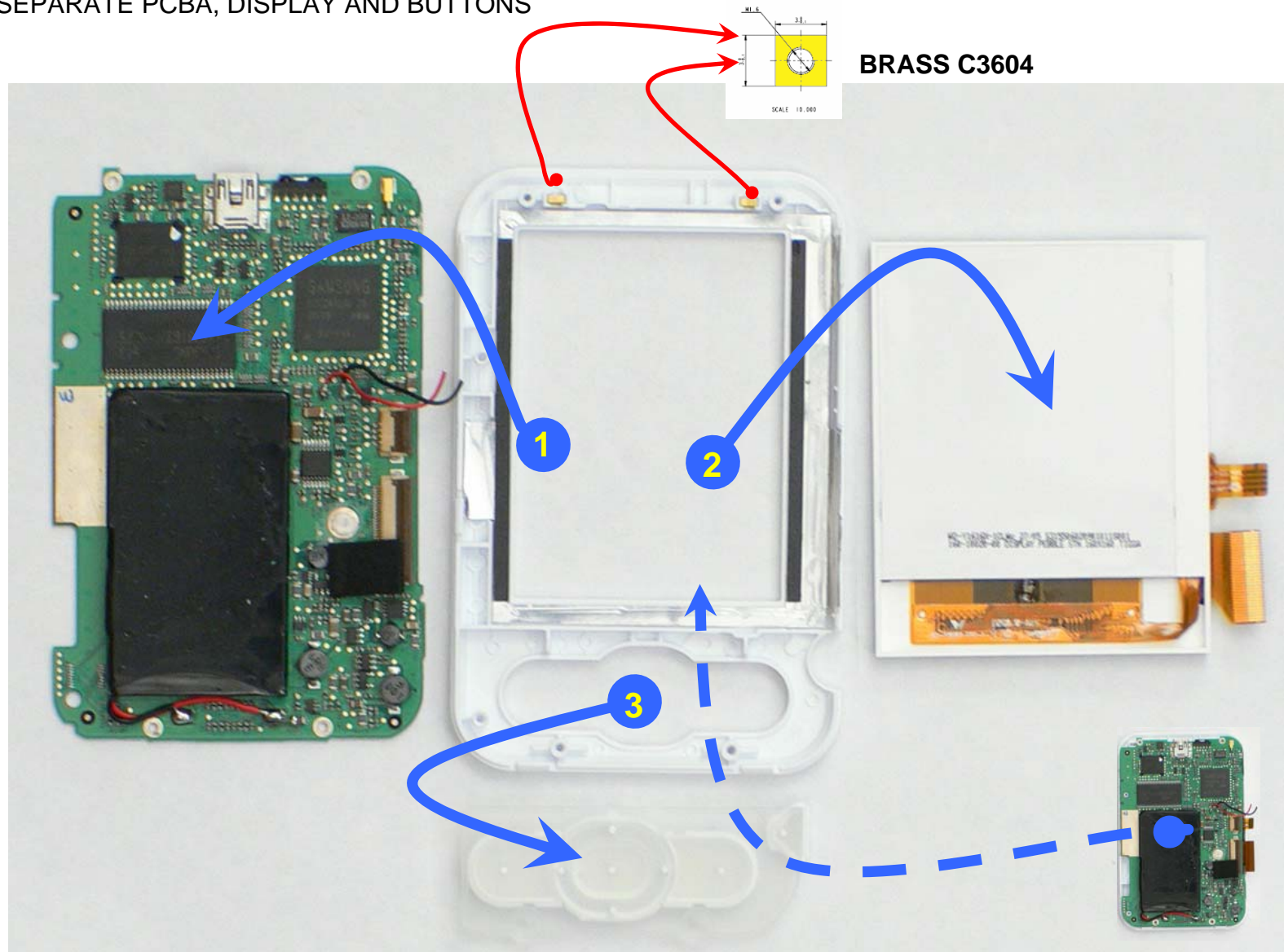
Z22.10 OPEN DISPLAY CONNECTORS (2) AND CUT PIEZO WIRES



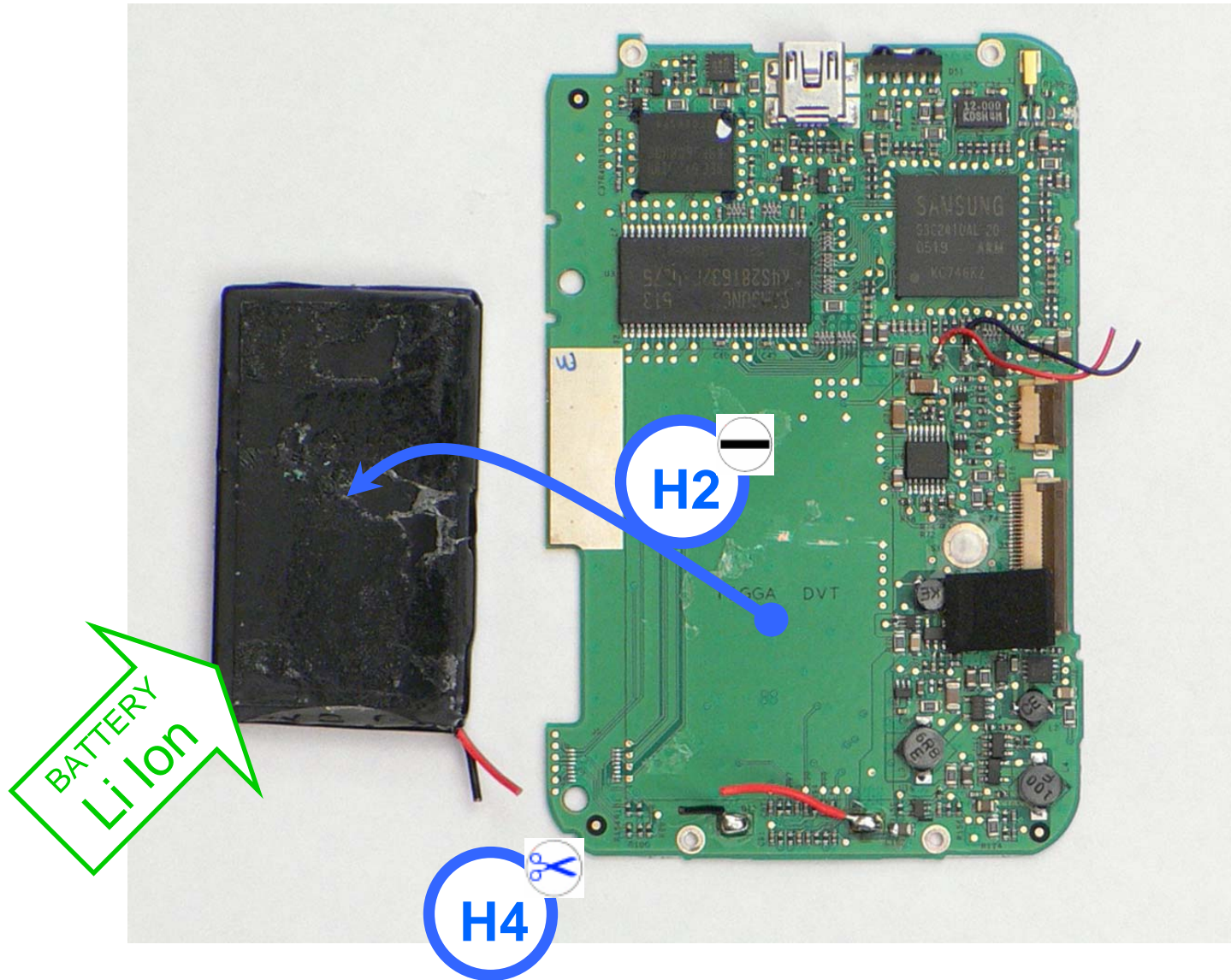
Z22.09 REMOVE SCREWS (4)

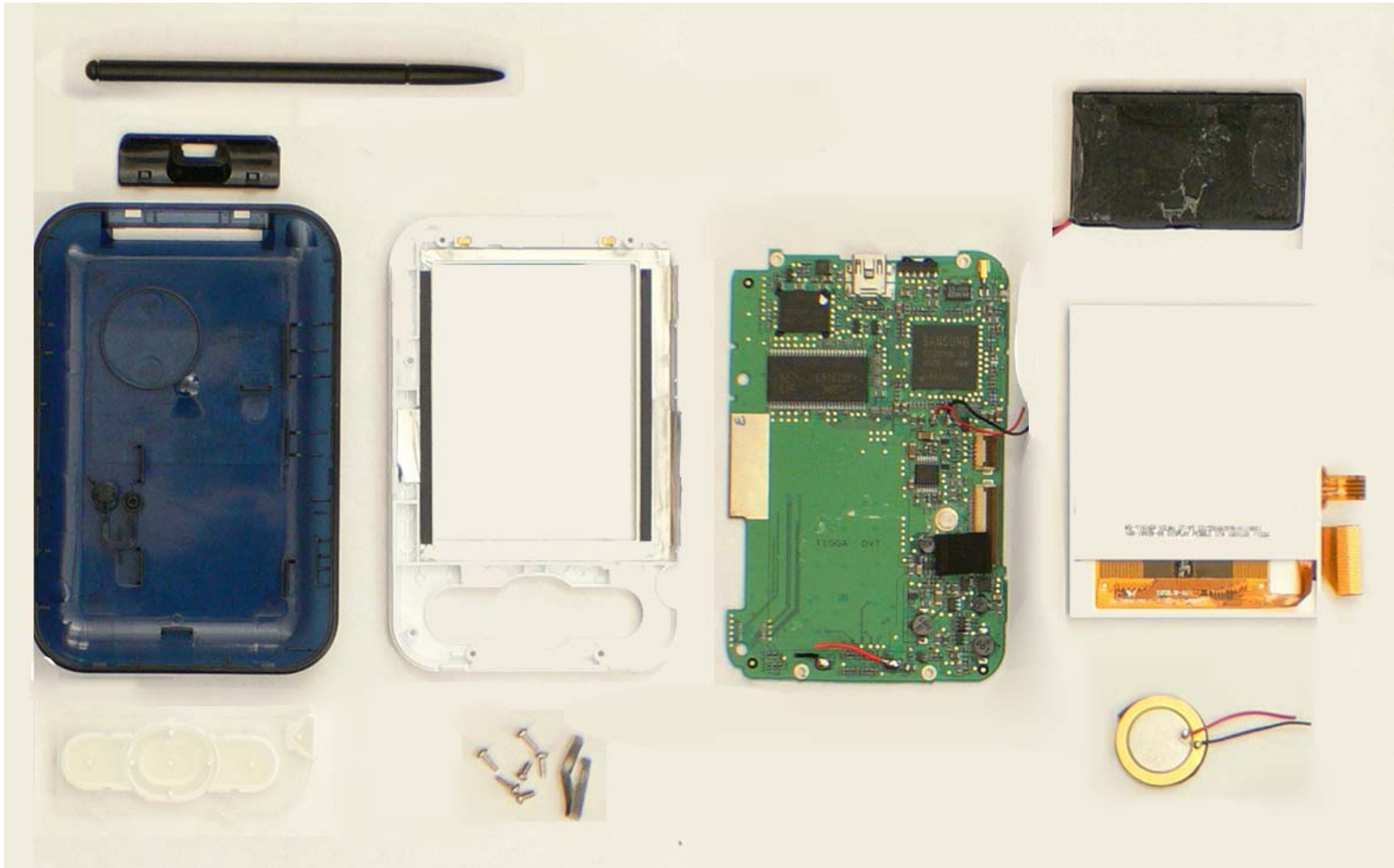


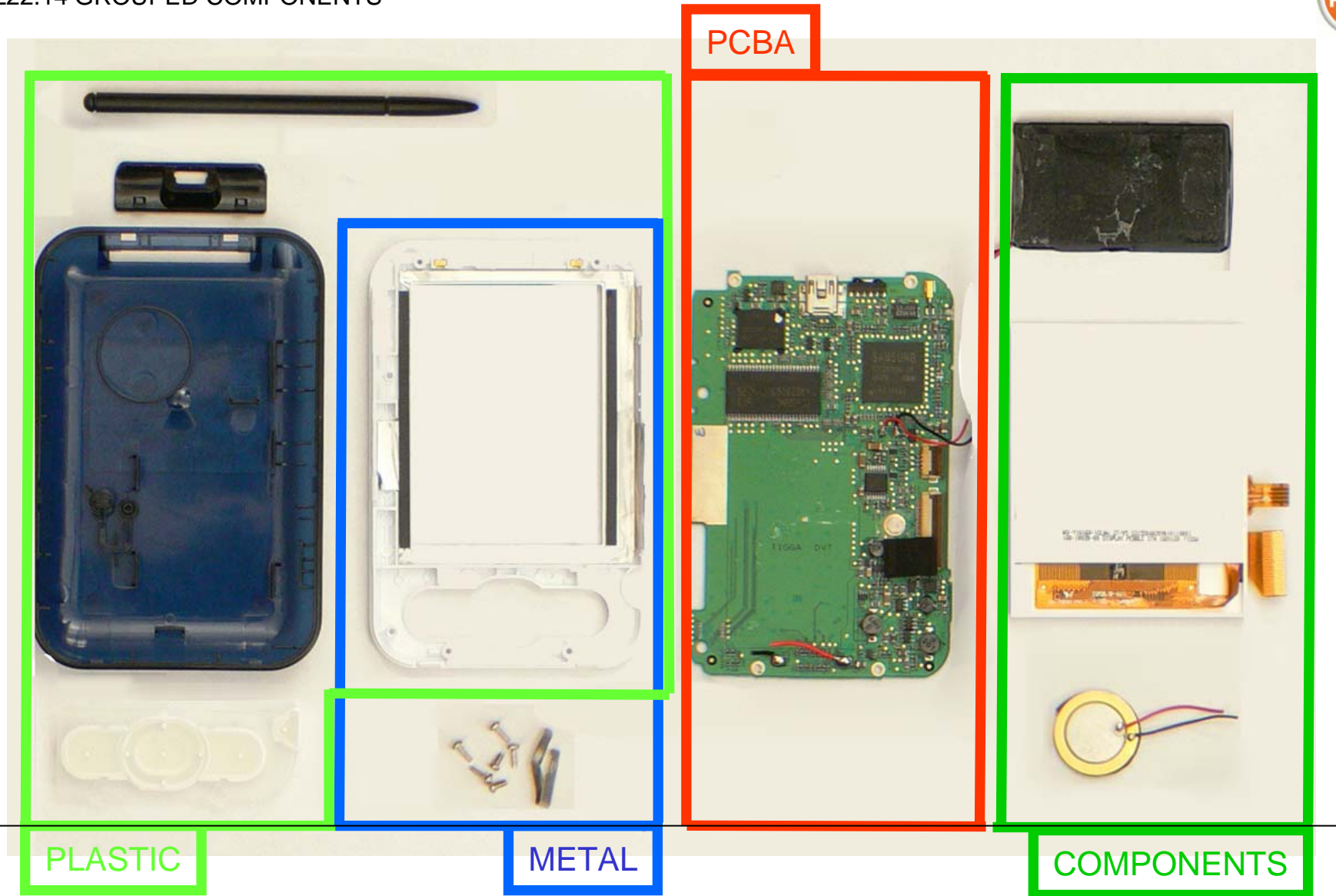
Z22.11 SEPARATE PCBA, DISPLAY AND BUTTONS



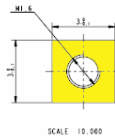
Z22.12 REMOVE BATTERY FROM PCBA AND CUT WIRES







**Brass inserts (C3604) contain
< 4% Pb.
This is currently allowed per
RoHS Exemption 6.**



BRASS C3604

Disassembly Instructions for palm™ Zire™ 22 handheld

Only authorized rec _____ instructions.
Any attempted disassembly by a user or unauthorized party will void the
product warranty and may irreparably damage the product.

18AUG06

Analysis of these solder pads for ceramic crystals on PCBA may reflect the high temperature / **high Pb solder**.

This is currently allowed per RoHS Exemption #7.

