

T700.01 IDENTIFICATION

Treo™ 700P
SMARTPHONE



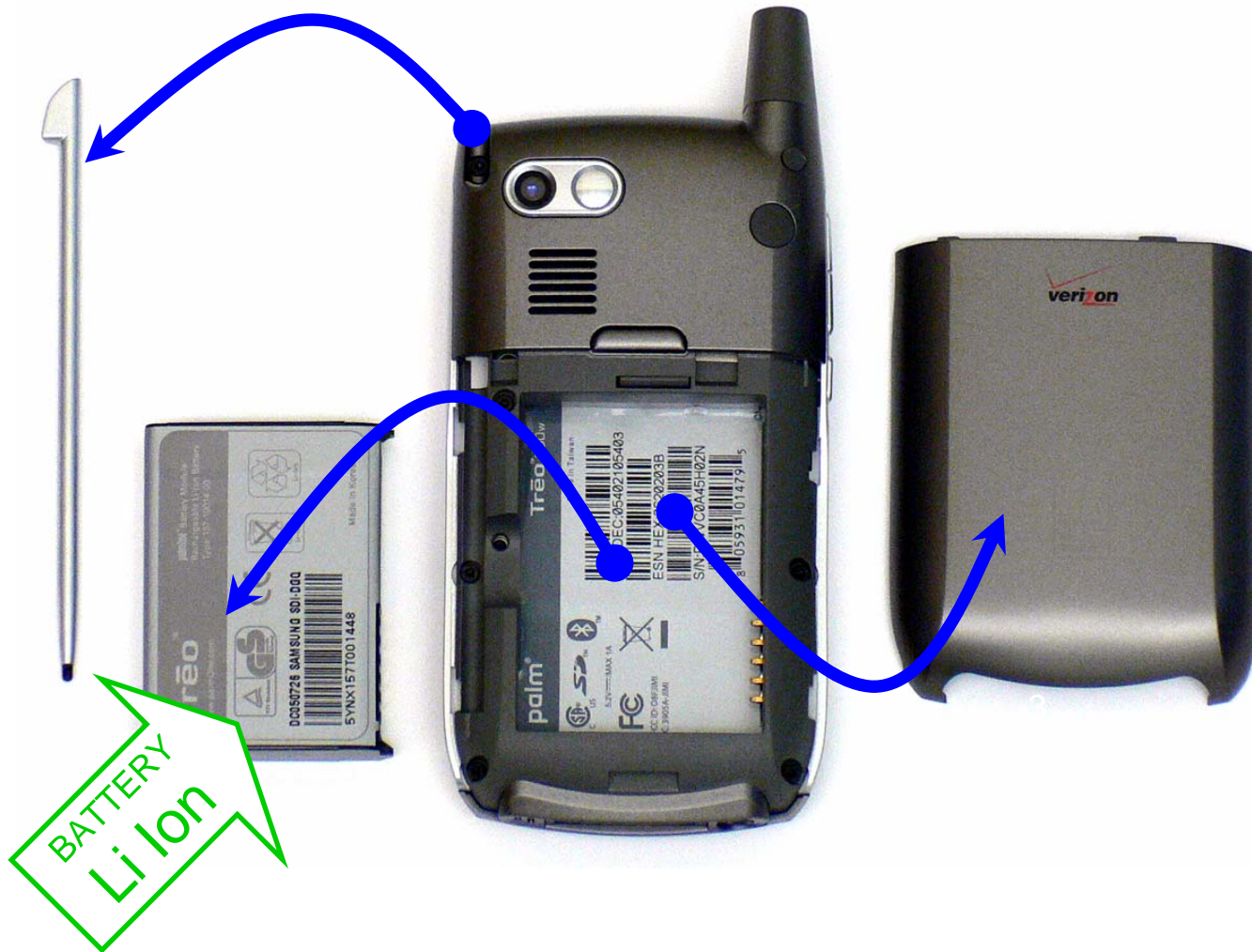
Treo™ 700w|wx
SMARTPHONES



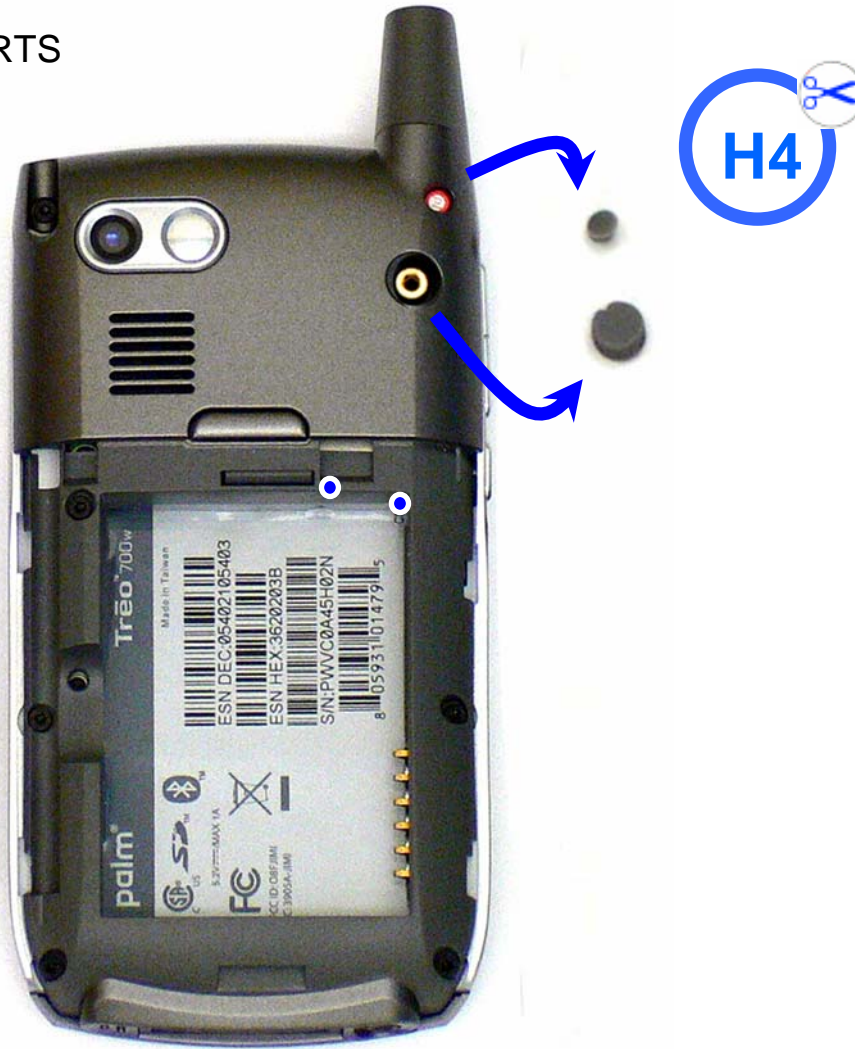
T700.02 REQUIRED HANDTOOLS



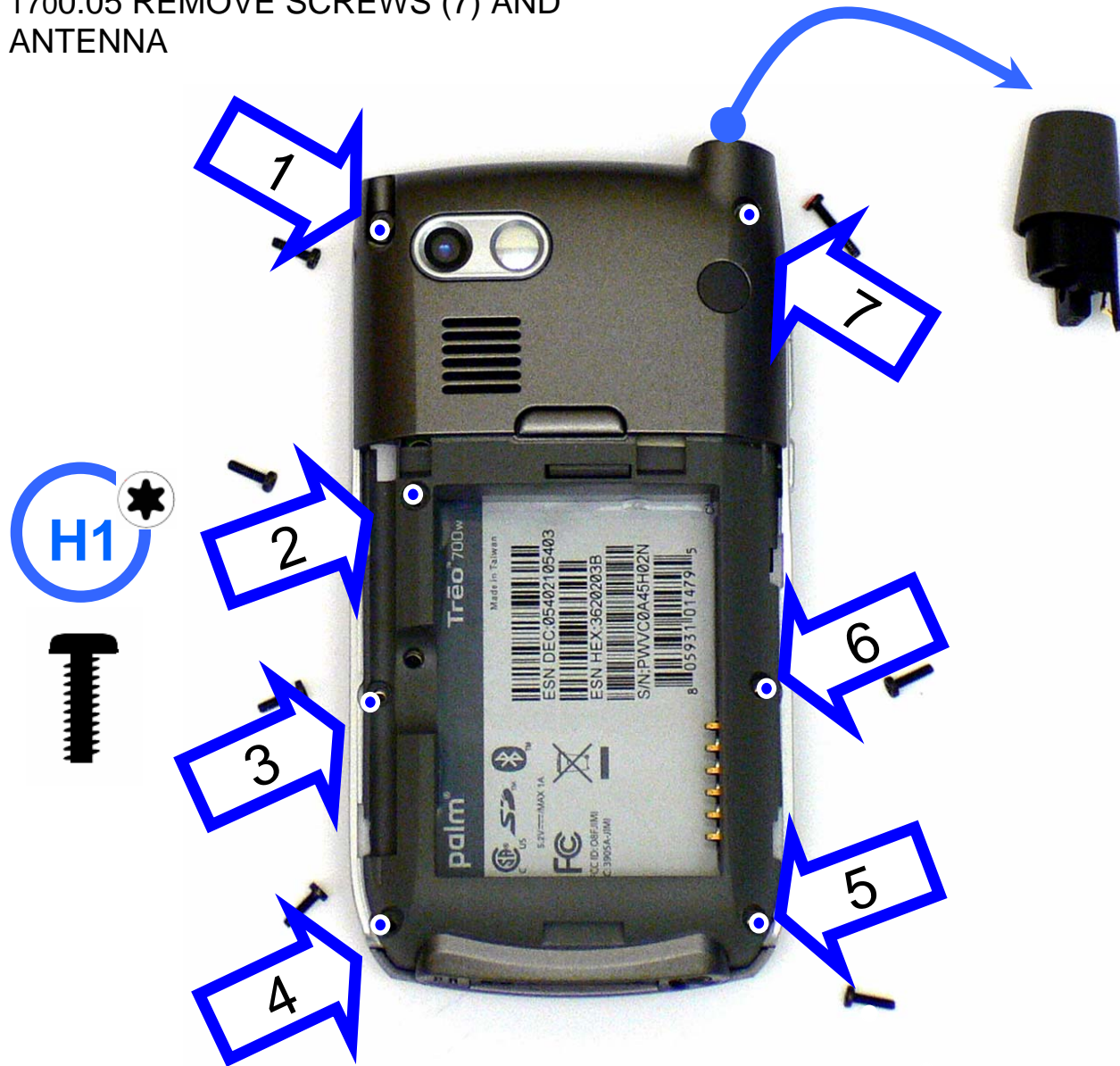
T700.03 REMOVE BATTERY AND STYLUS



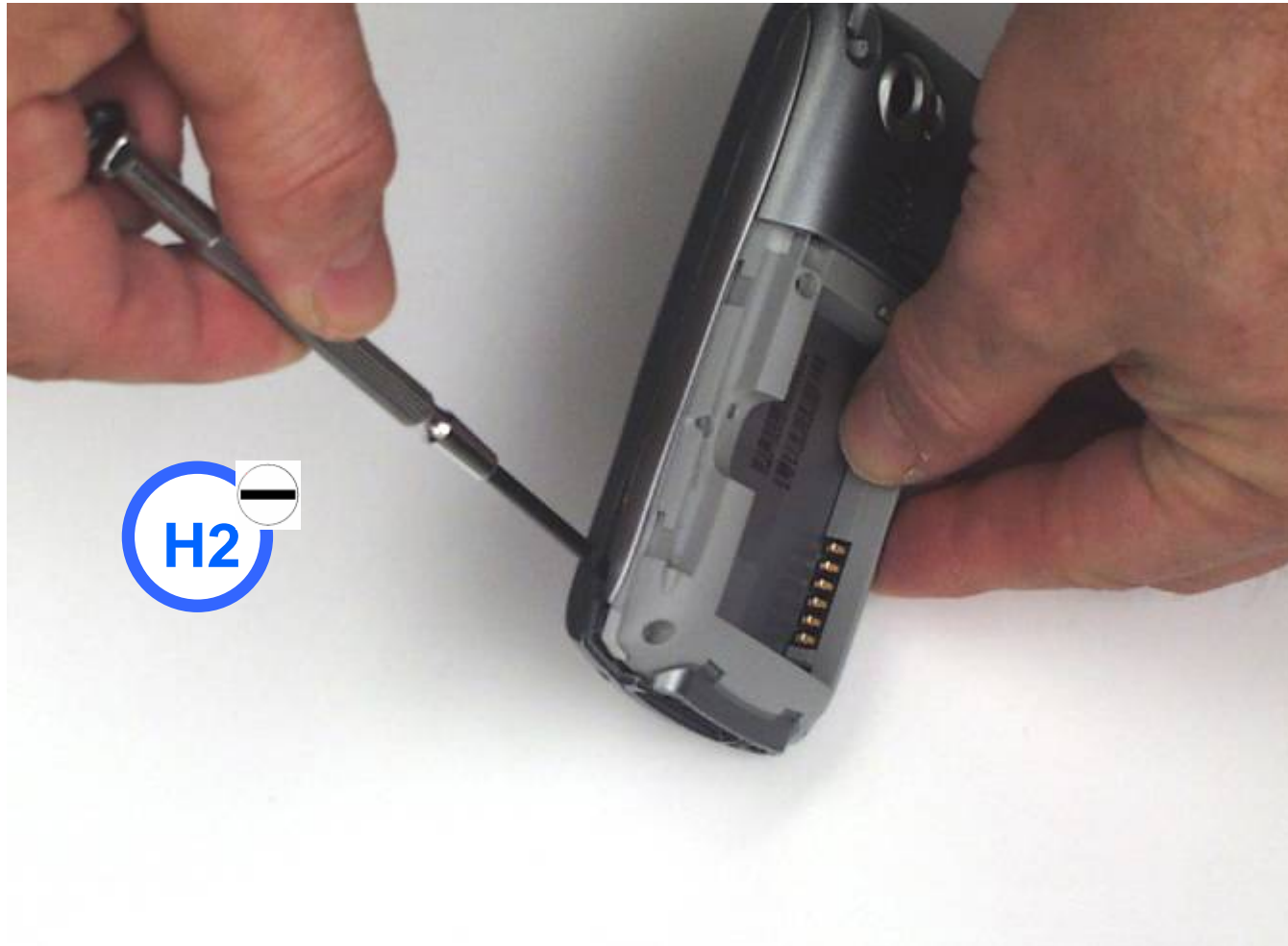
T700.04 REMOVE INSERTS



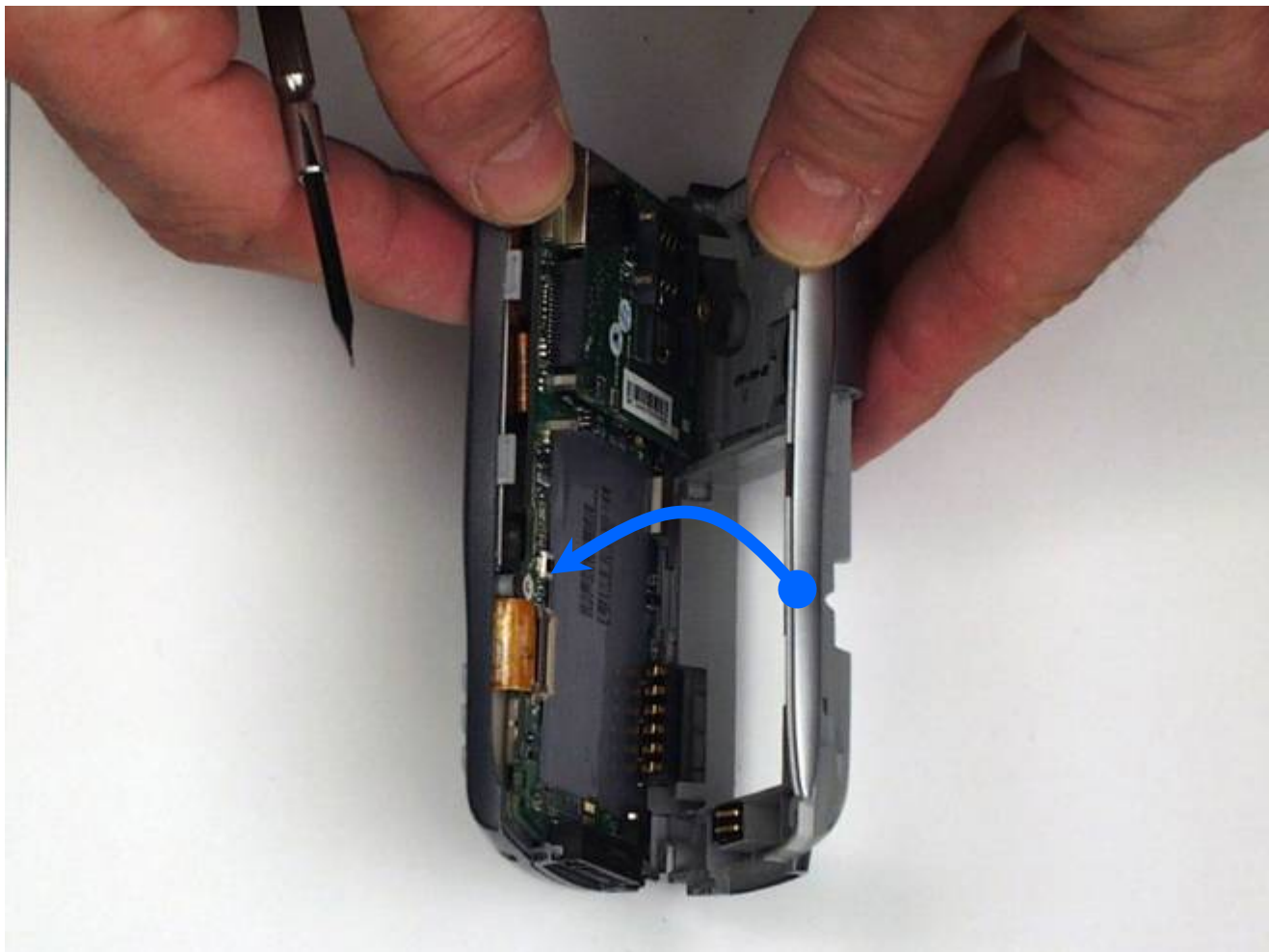
T700.05 REMOVE SCREWS (7) AND ANTENNA

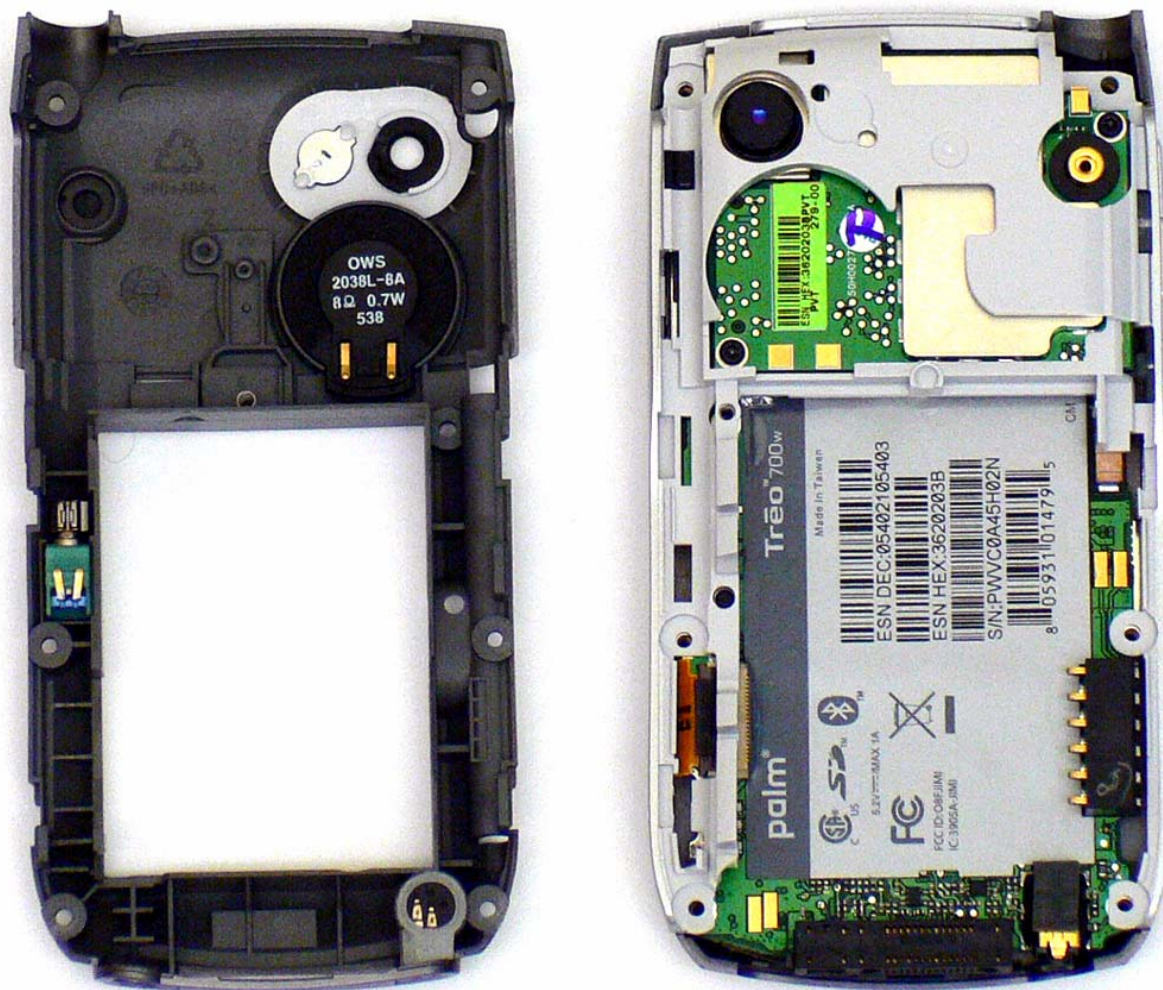


T700.07 OPEN CASE

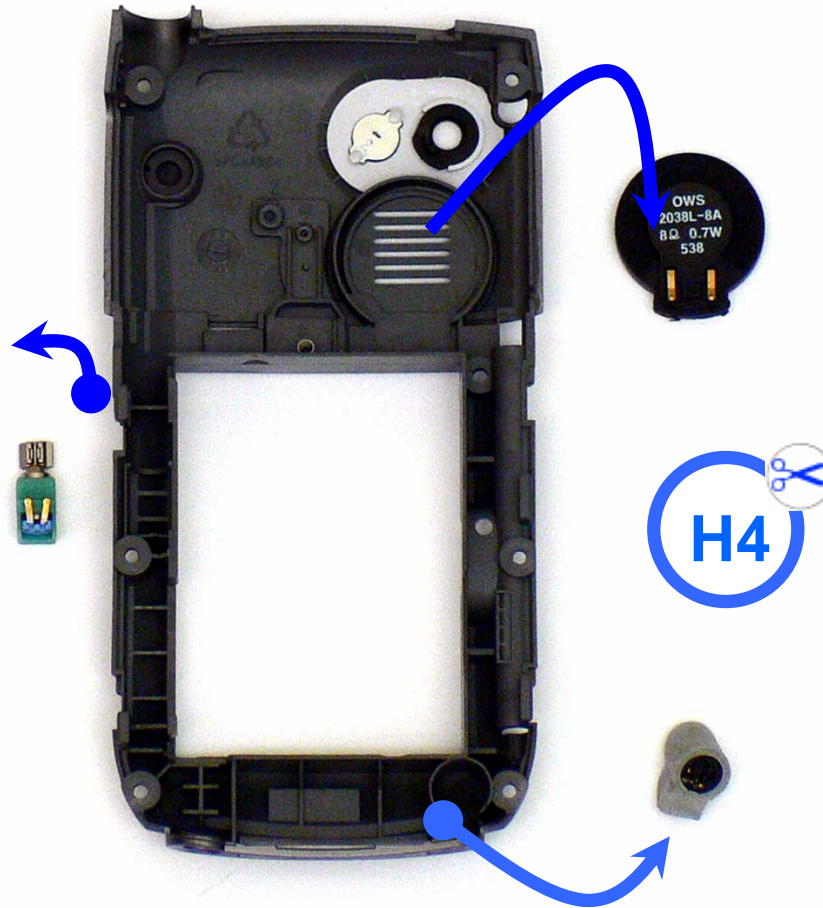


T700.08 REMOVE BACK COVER

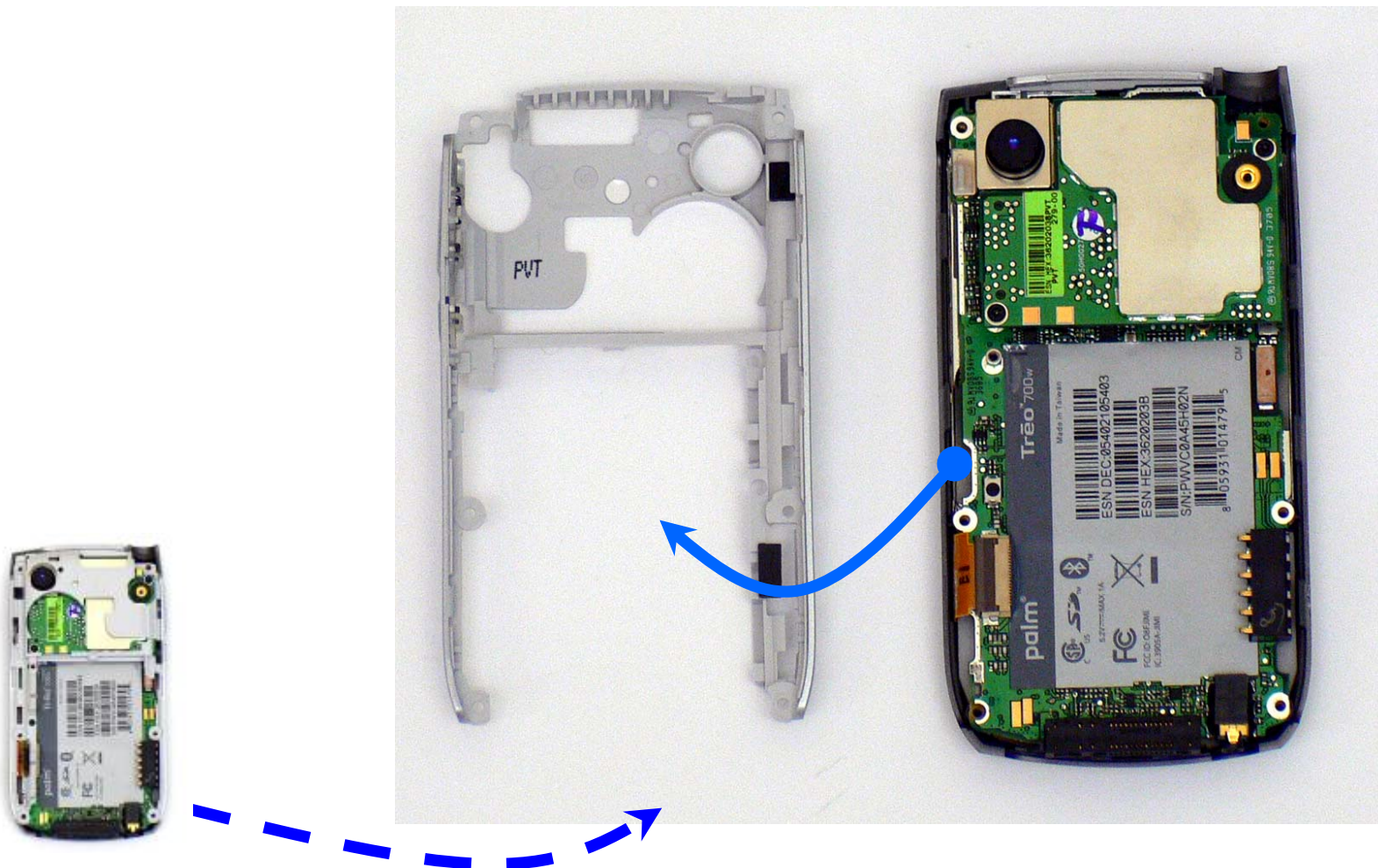




T700.10 REMOVE MICROPHONE BOOT, VIBRATOR AND SPEAKER,

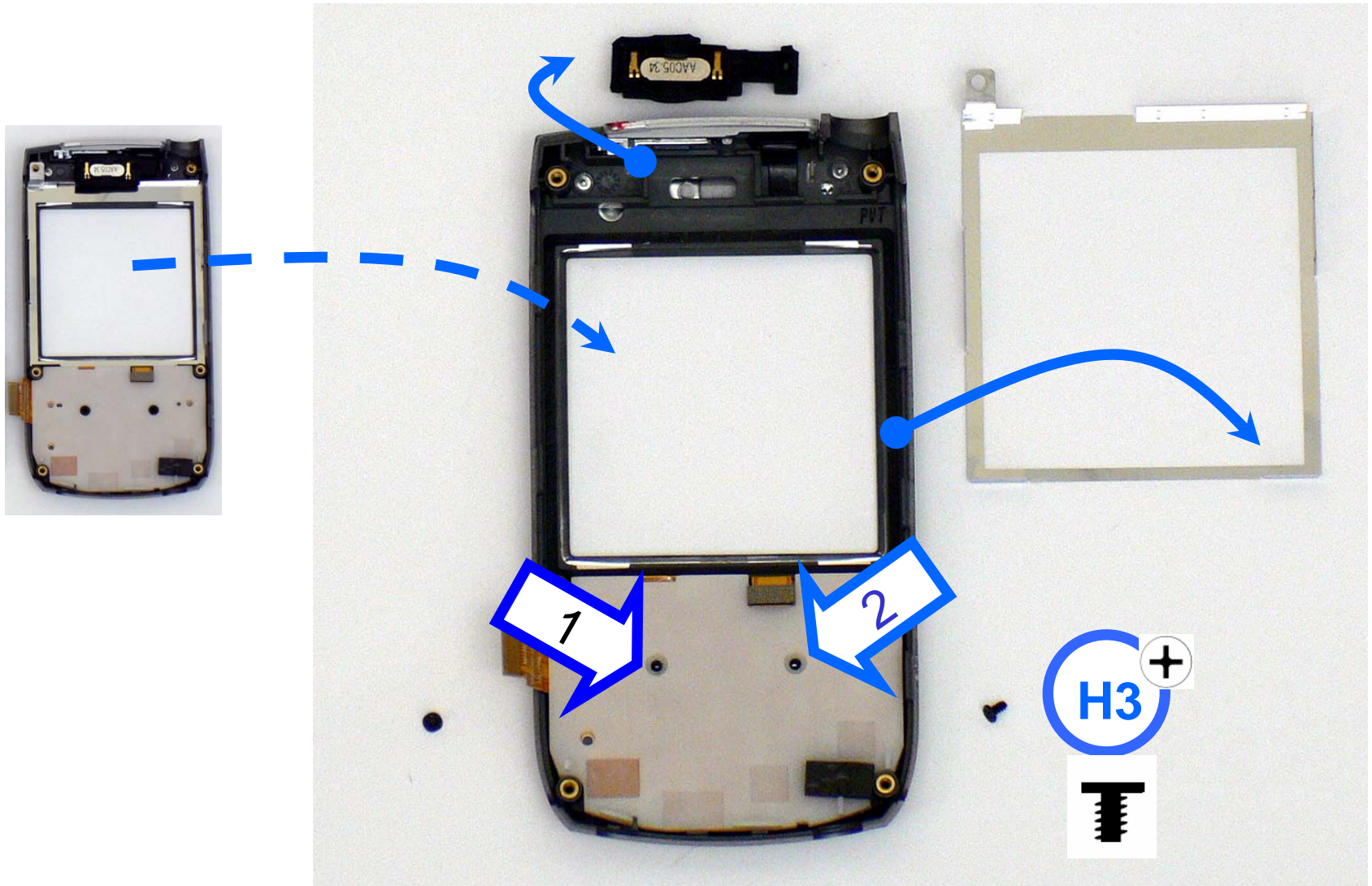


T700.11 REMOVE MIDFRAME

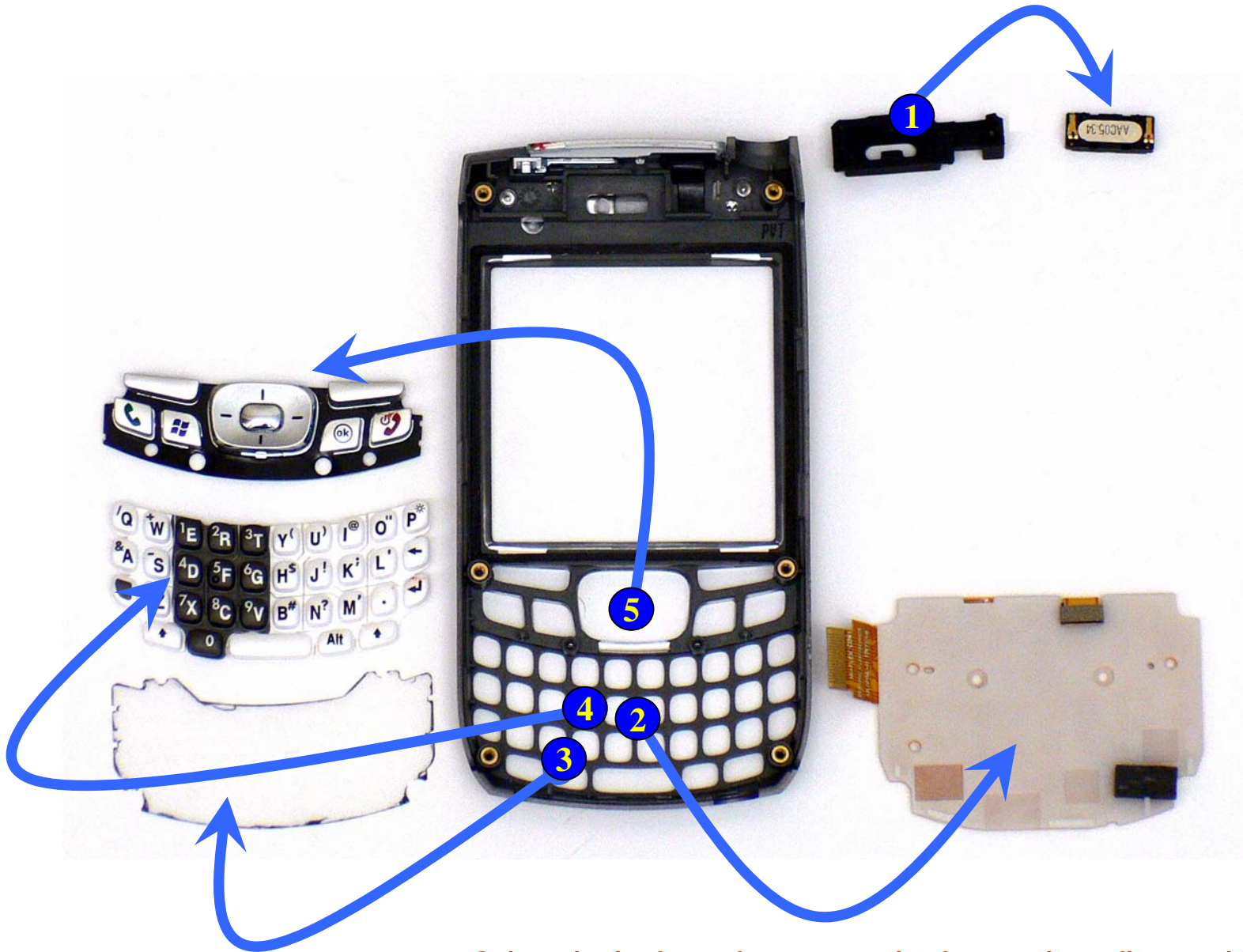




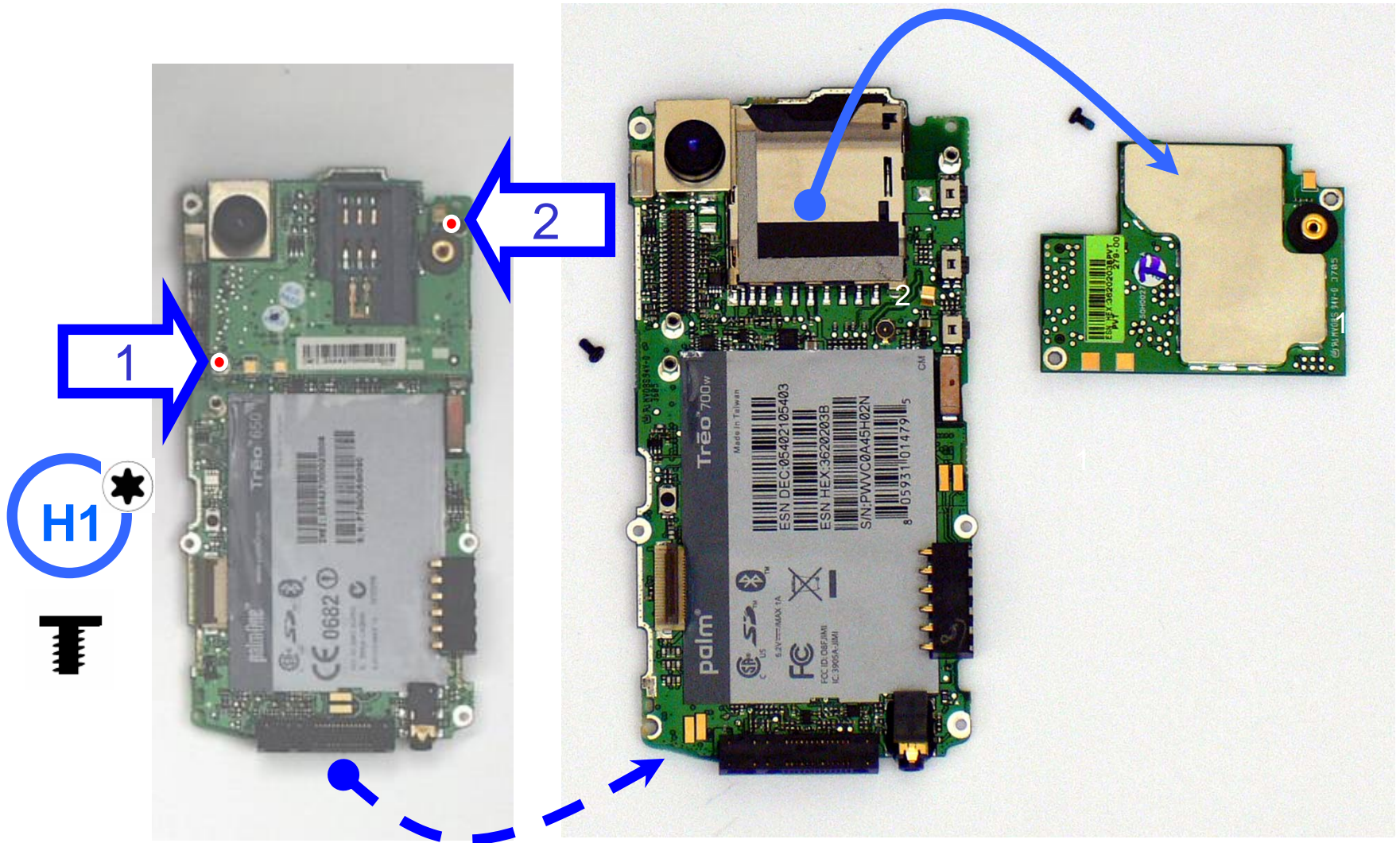
T700.13 REMOVE RECEIVER, SHIELD AND KEYPAD SCREWS (2)



T700.14 REMOVE KEYPAD AND KEYS



T700.15 REMOVE SCREWS (2) AND RADIO PCBA





24Jul06

T700.17 ALL COMPONENTS - MATERIALS



METAL

COMPONENTS

PLASTIC

PCBA