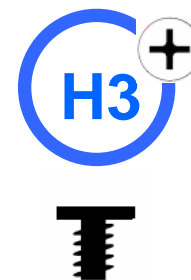
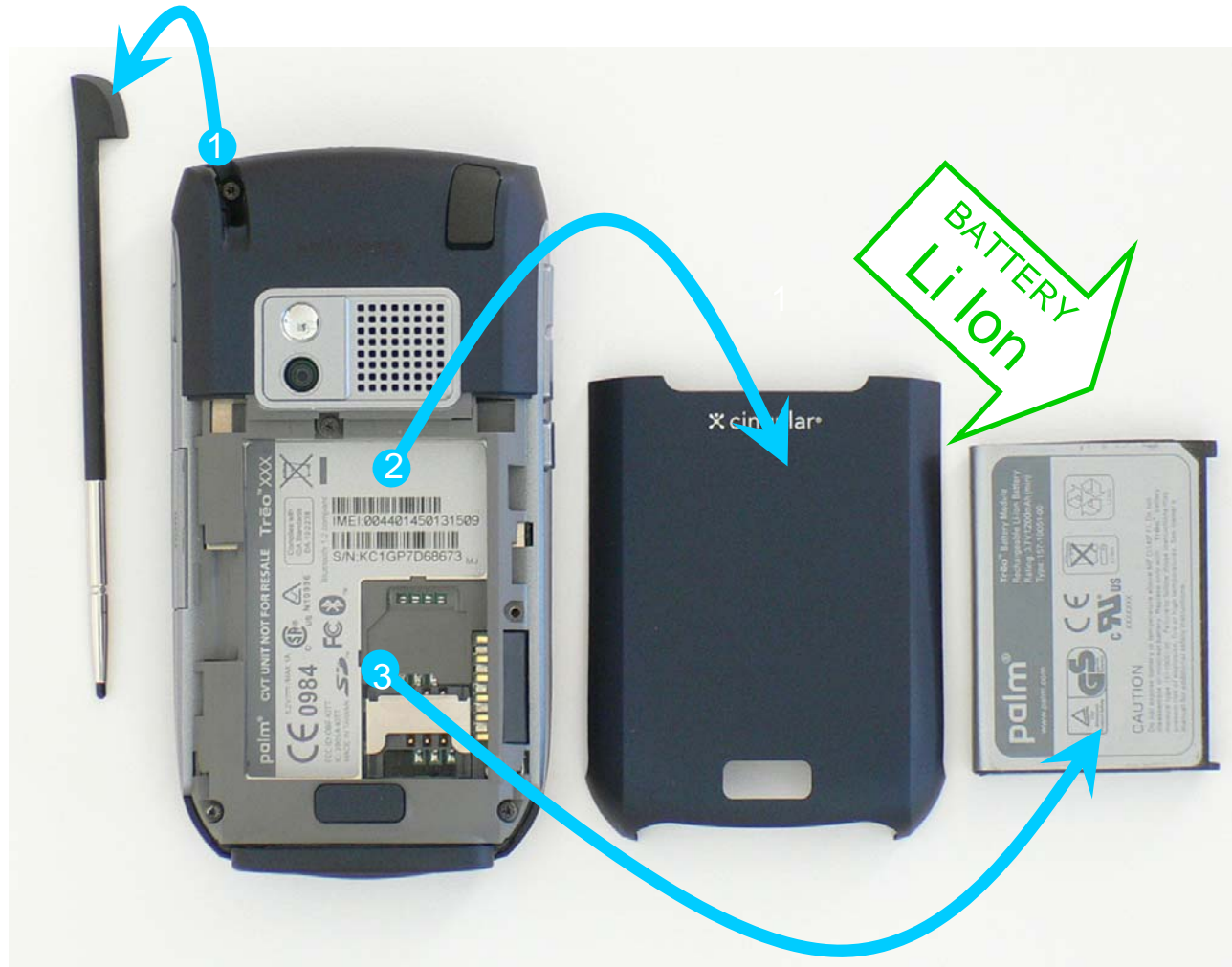


T750.01 IDENTIFICATION





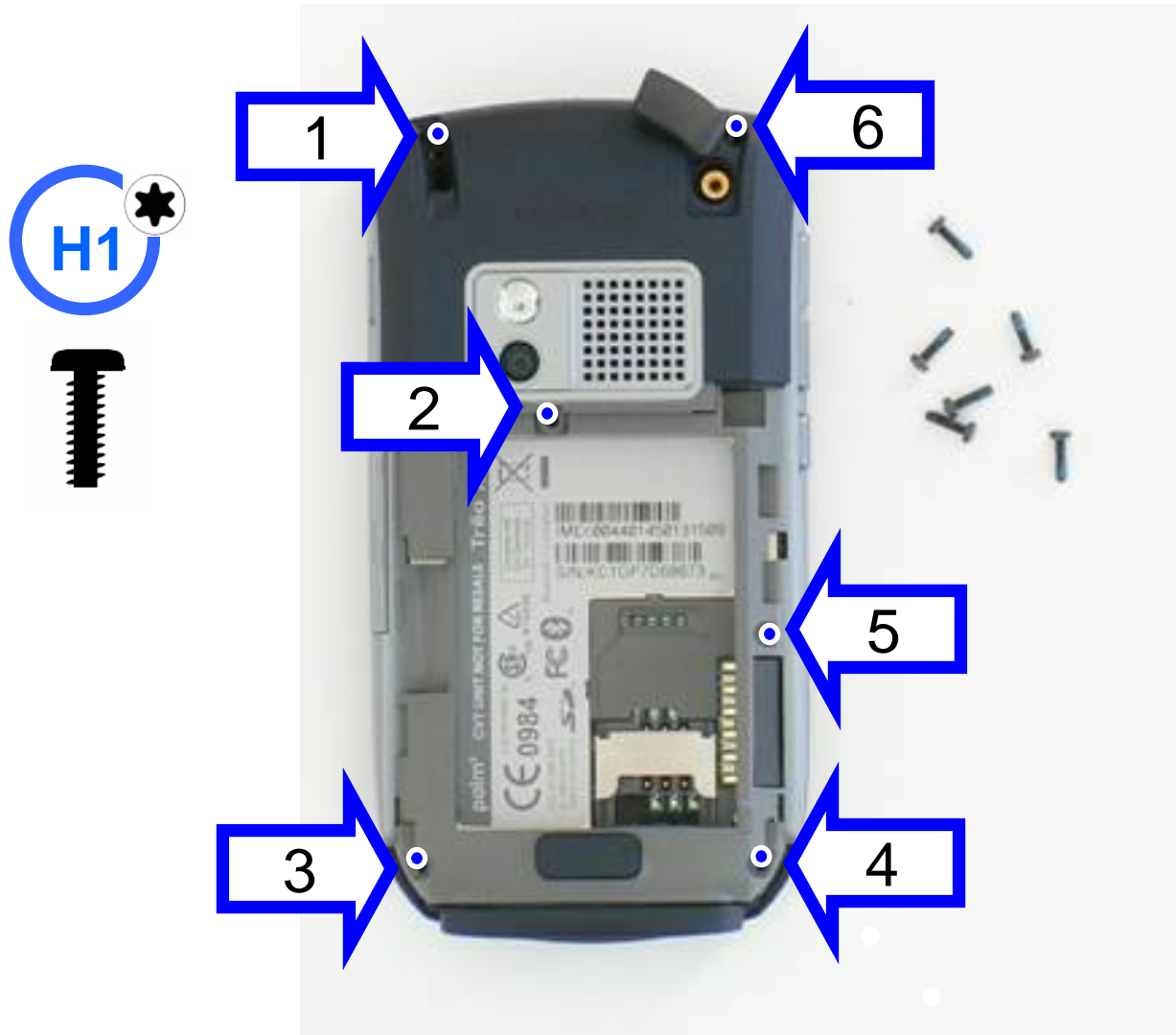
T750.03 REMOVE STYLUS, BATTERY COVER AND BATTERY



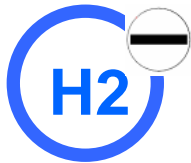
T750.04 LIFT ANTENNA JACK COVER

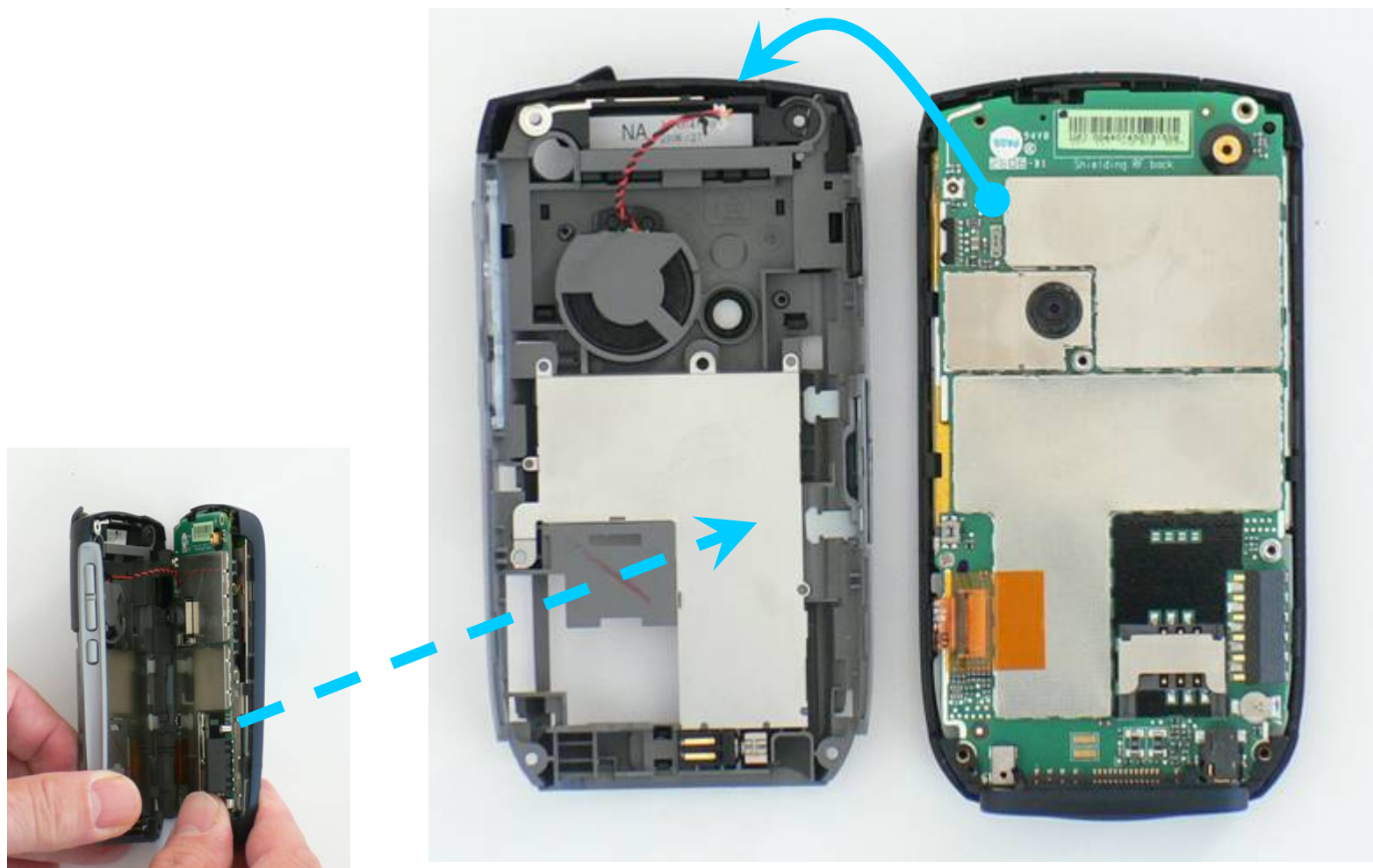


T750.05 REMOVE SCREWS (6)

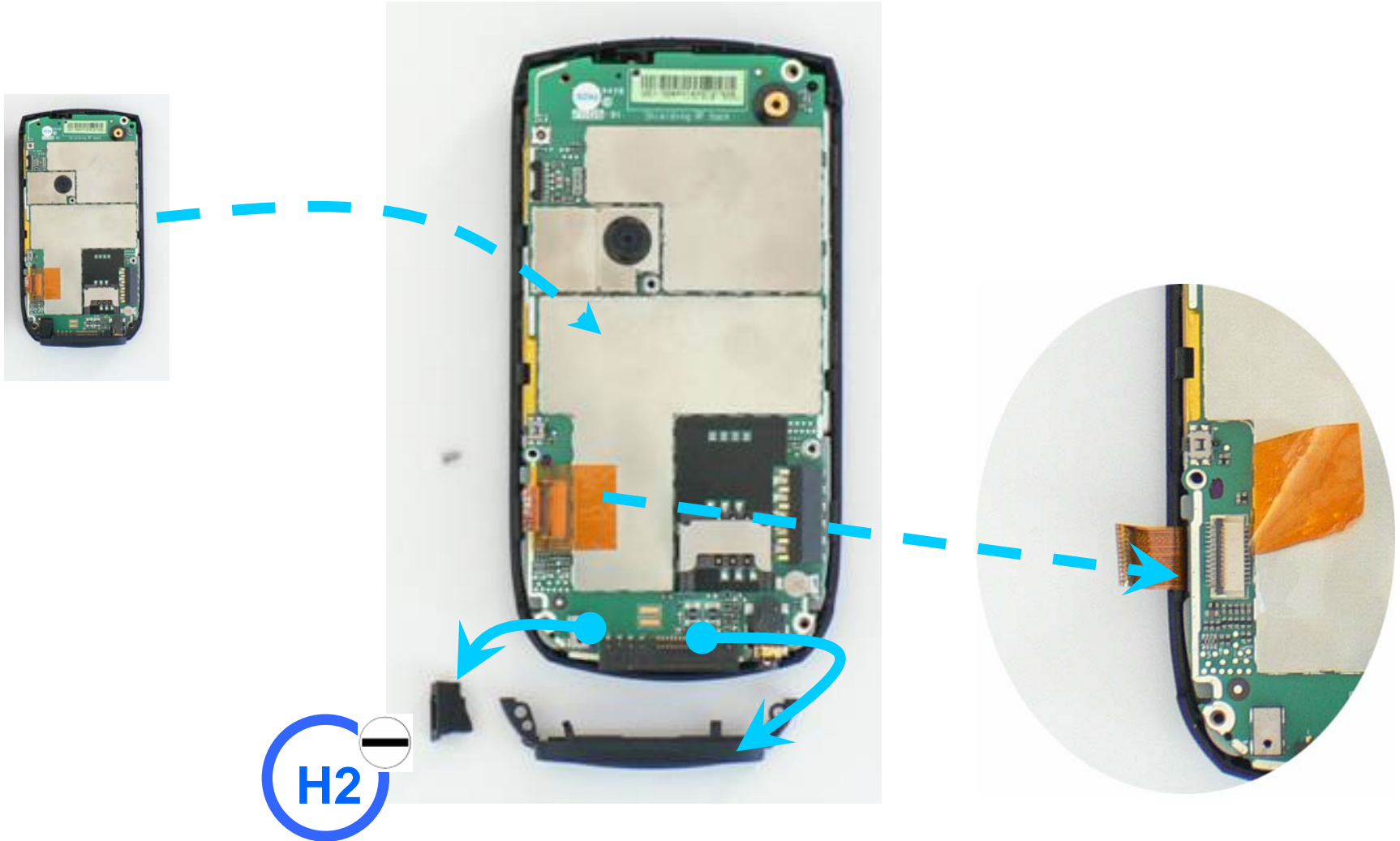


T750.07 OPEN CASE

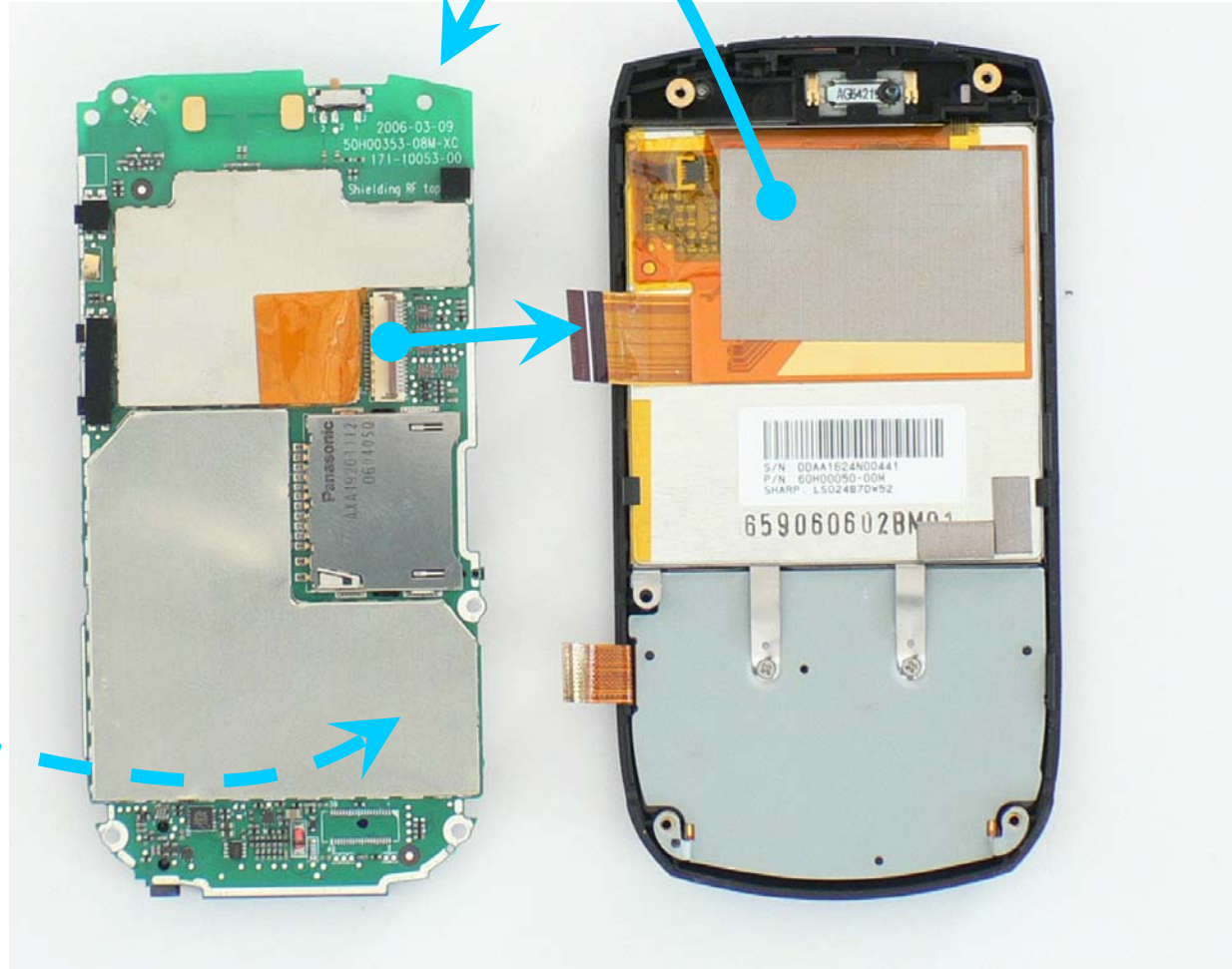




T750.10 REMOVE PCBA SCREW, MICROPHONE BOOT AND CONNECTOR GUIDE;
OPEN KEYBOARD CONNECTOR



T750.11 REMOVE PCBA; OPEN LCD CONNECTOR



T750.14 KEYSWITCH ASSEMBLY, KEYPADS (2) AND LCD FRAME

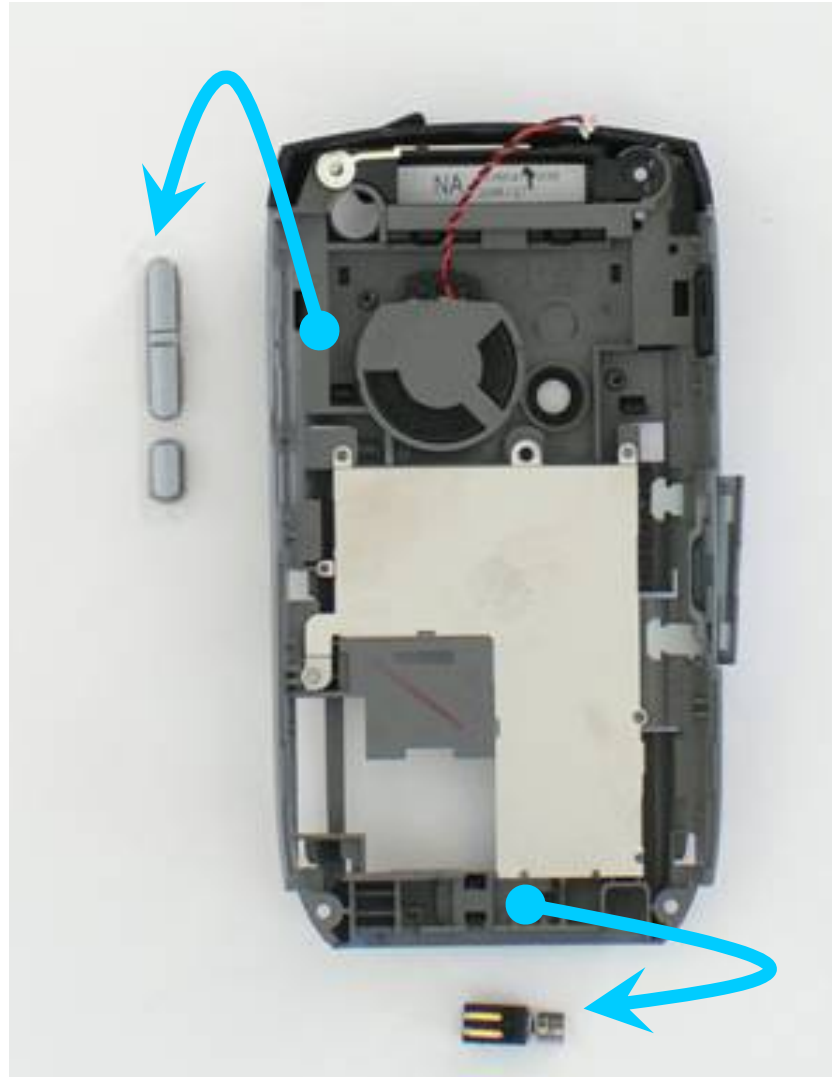


Disassembly Instructions for
Palm® Treo™ 750 Smartphone

Only authorized recyclers are permitted to use these disassembly instructions. Any attempted disassembly by a user or unauthorized party will void the product warranty and may irreparably damage the product.

24OCT06

T750.15 REMOVE SIDE BUTTONS AND VIBRATOR







T750.16 REMOVE STYLUS BUMPER, ANTENNA AND SPEAKER





24OCT06

METAL



COMPONENTS



PLASTIC



PCBA