

# TealOS User's Manual



Program Version 1.06  
Last Updated: February 23, 2009

## Table of Contents

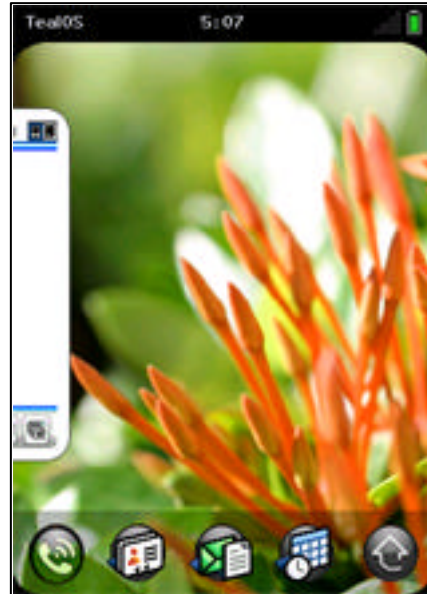
<b>Introduction .....</b>	<b>1</b>
Description.....	1
Installing .....	2
Windows Install .....	2
Manual Install.....	2
Terminology .....	2
<b>Chapter 1 – Quick Start .....</b>	<b>3</b>
Home Screen.....	3
Applications Screen.....	3
Wave Launcher .....	4
<b>Chapter 2 – Home Screen.....</b>	<b>5</b>
Using Cards .....	5
Discarding Cards .....	5
Ordering Cards.....	6
Card Exceptions .....	6
Custom Background Image.....	7
<b>Chapter 3 – Quick Launch Bar .....</b>	<b>8</b>
Using the Quick Launch Bar .....	8
Customizing the Quick Launch Bar .....	8
<b>Chapter 4 – Applications Screen .....</b>	<b>9</b>
Using the Applications Screen .....	9
Working with Categories .....	9
<b>Chapter 5 – Wave Launcher .....</b>	<b>10</b>
Using the Wave Launcher .....	10
Using Card Swipes .....	10
Customizing the Wave Launcher .....	11
Disabling the Wave Launcher .....	11
<b>Chapter 6 – Managing Applications.....</b>	<b>12</b>
Info.....	12
Beam/Send.....	12
Copy.....	12
Deleting Apps .....	13
<b>Appendix A – Revision History .....</b>	<b>14</b>
<b>Appendix B – Contact Info .....</b>	<b>14</b>
<b>Appendix C – Registering.....</b>	<b>14</b>
<b>Appendix D – Products .....</b>	<b>16</b>
<b>Appendix E – Legal Notice .....</b>	<b>19</b>

# Introduction

## ***Description***

Thank you for trying TealOS.

TealOS gives your organizer or smartphone a flashy new card-based application interface and popup wave launcher--just like the ones found on newer WebOS-based handhelds such as the Palm Pre. On older PalmOS handhelds, it's the next best thing to WebOS.



## ***Contents***

This archive contains the following files:

Program files:

TEALOS.PRC  
TPSETUP.EXE

The TealOS program file  
Windows easy-installer

Document files:

OSDOC.PDF  
OSDOC.HTM  
OSDOC.PRC  
REGISTER.HTM  
REGISTER.TXT

This document in Adobe Acrobat (PDF) format  
This document in HTML format (sans images)  
This document in TealDoc format  
TealPoint Registration form in HTML format  
TealPoint Registration form in text format

# Installing

## Windows Install

Under Windows, run TPSETUP.EXE and follow the on-screen prompts

## Manual Install



Use the Palm Install Tool (“Quick Install”) to install the file:

- **TEALOS.PRC**

The Palm Install Tool comes installed on your desktop computer as part of your original software package, and is accessible from the Palm Desktop program as an icon on the left hand side.

This document also comes as a Palm document file **OSDOC.PRC**, which you can optionally install and view with our document reader TealDoc.

## Terminology

This manual uses the following terminology:

### *buttons*

Rounded, rectangular areas on the Palm display screen that you can tap on with a stylus.

### *hardware buttons*

Physical pushbuttons on you device/phone case that you can depress with your finger

### *application buttons*

The row of two or four hardware buttons that are typically configured to launch frequently-used applications

### *5-way control*

The directional rocker switch located below the device display

### *silkscreen buttons*

Buttons located in a physical or virtual graffiti text entry area, if present

### *non-volatile memory*

A memory technology that does not lose data even after complete power loss. In modern PalmOS handhelds, NAND flash memory chips are used.

### *NVFS*

Palm’s non-volatile file system, the part of PalmOS which uses a fixed block of normal RAM memory to speed up access to data stored in NAND flash memory.

### *DBCACHE*

The fixed block of normal RAM memory used by NVFS to speed up file access.

# Chapter 1 – Quick Start

The TealPoint Operations Skin (TealOS), gives your handheld a fresh new look and feel. It provides a powerful and intuitive way to organize your activities and work flow, and resembles the card-based interface of the new Palm Pre. On PalmOS handhelds, it's the next best thing to WebOS.

TealOS consists of three primary interface elements:

## ***Home Screen***

The ***Home Screen*** is the place where you can find and organize your favorite applications. After running TealOS the first time, you can return to the Home Screen using the application launcher button on your handheld

In the middle of the screen, your current (last-accessed) applications appear as visual “cards” with thumbnail representations of your current (last) activity in each program.

At the bottom of the Home Screen, the ***Quick Launch Bar*** provides immediate access to your favorite apps.



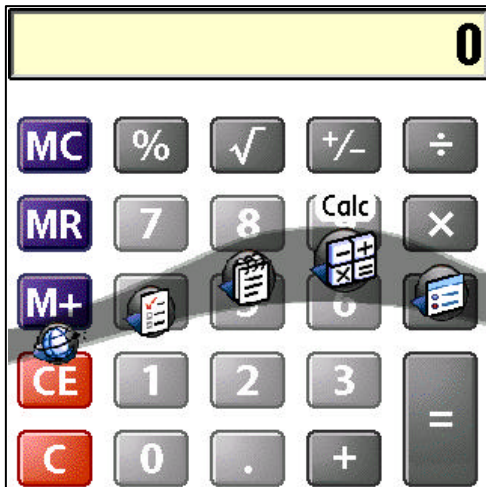
## ***Applications Screen***



The TealOS ***Applications Screen*** provides access to all the programs installed on your handheld. You can slide up the Applications screen using the last icon in the ***Quick Launch Bar***.

Swipe up and down to scroll the screen or left and right to change categories. Tap on an application's icon to open it.

## Wave Launcher



The **Wave Launcher** provides a quick way to jump to favorite applications without returning the *Home Screen*. You can use the wave launcher from within almost any program.

To bring up the Wave Launcher, do a quick stroke up from the bottom of the screen. Slide left or right to select an icon, and then release to jump to the selected app.

## Chapter 2 – Home Screen

The TealScan **Home Screen** will open the first time you run TealScan. From that point on, you can return to the Home Screen anytime simply by pressing your device's hardware launcher button.



### *Using Cards*

The Home Screen will be empty the first time you run the program. From then on, a card will automatically be saved for every app you run. When you return to the TealOS Home Screen, it will contain these thumbnail image “cards” for every application (up to 20) that you have recently visited. These cards represent all your recent activity, and offer an easy way to both see your status in different programs and easily resume what you were doing.

To shuffle cards, simply drag them left or right with a simple stroke of your finger or stylus. A slow simple moves the card, while a quick stroke lets you “throw” the row of cards multiple places.

To resume an activity, tap on a card to launch the corresponding application.

### *Discarding Cards*

To discard a card, just tap and hold it with your finger or stylus and “toss” it upwards off the screen.



## Ordering Cards

To change the relative placement of cards, enter *Ordering Mode* in one of three ways:

- Drag a card downward, or
- Tap and Hold on a card for one second, or
- Tap in the Home Screen outside of a card



When you enter *Ordering Mode*, all the cards will shrink in size. To move a card, drag it downwards until it becomes translucent, and then drag it to another location in the stack.

To move a card a long distance up or down the stack, you have two options:

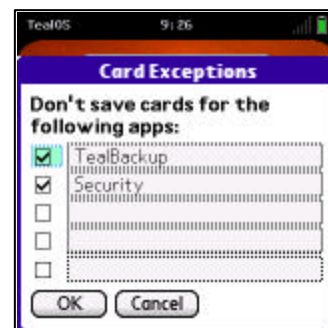
- 1) Drag down a card, then quick swipe left or right. This will “throw” the card to another place in the stack. The distance it goes is proportional to how fast and long you swipe.
- 2) Drag down a card, then drag it to the left or right screen edge. Deck will slide automatically as long as you hold your stylus/finger still.

To exit *Ordering Mode*, tap and hold on a card or tap anywhere above or below the stack of cards.

## Card Exceptions

For some applications--particularly ones that periodically launch themselves to perform maintenance and other automated tasks—you may not want cards to be saved. Also, some apps launch other assistant “helper” apps, and you might not want separate cards for all components.

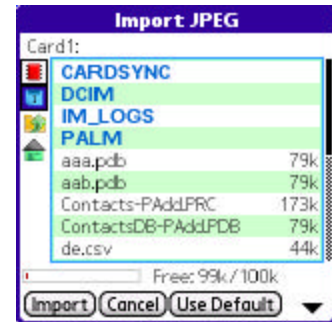
For these, select the **Card Exceptions** item from the *Options* title bar menu, and add the desired programs to the list.





## Custom Background Image

You can select your own JPEG image to be used as a background for the *Home Screen*. To do so, choose **Import JPEG** from the drop-down *Tools* menu in the title bar, and select a JPEG format image to import, typically from images that you've store on your SD card. To change back to the default image, select *Use Default*.



The image you choose should be at least as large as your device display at its largest size, typically 320x320 or 320x480 pixels. If you image is larger, only the upper left corner will be used.

**HINT:** If your display size is variable due to a software text writing area, you should import the image with your display at the largest vertical size. For devices with variable landscape-capable displays, a different background image can be loaded for each screen width.



## Chapter 3 – Quick Launch Bar

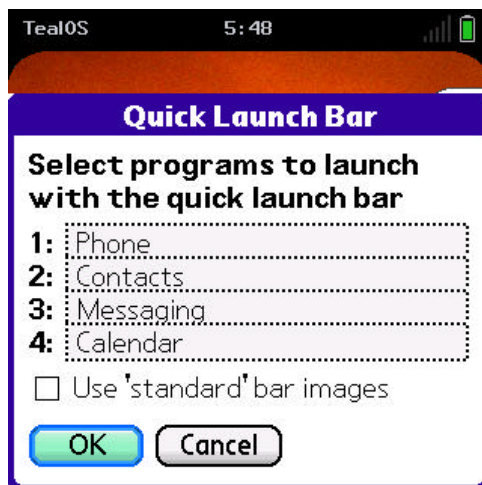
The **Quick Launch Bar** at the bottom of the *Home Screen* provides an instant way to launch your favorite apps.

### *Using the Quick Launch Bar*

Tap on an icon in the bar to launch the corresponding application. The rightmost button is reserved for bringing up the *Launcher Screen*, which you can also open with a swipe upwards from the *Quick Launch Bar*.



### *Customizing the Quick Launch Bar*



To customize the *Quick Launch Bar*, choose the *Quick Launch Bar* item from the drop-down title bar menu. You'll be presented with a list allowing you to choose to assign each button to any application present in main memory.

Normally, each button will adopt the Launcher icon image of the application mapped to it. An additional option *Use standard bar images*, however, allows you to use a standard set of built-in icon images for all the buttons.

## Chapter 4 – Applications Screen

The TealOS **Applications Screen** gives you access to all applications installed on your device. It uses an updated but familiar icon interface similar to tradition launchers under PalmOS.



### Using the Applications Screen

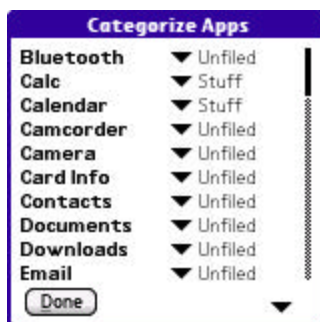
Open the *Applications Screen* using the rightmost button in the *Quick Launch Bar*. You can drag the whole screen up and down to scroll, or drag it left and right to change categories. To launch an application, tap on it.

You can also operate the applications screen using the 5-way navigator. The *up*, *down*, *left*, and *right* buttons function similarly to their swipe counterparts. When you press the 5-way *select* button, the first visible icon is highlighted. You can then move the highlight with the directional buttons and press select again to open that application.

### Working with Categories

Applications can be categorized into 15 standard PalmOS categories, plus one *Unfiled* category. To edit categories, choose the **Edit Categories** item from the title bar *Options* menu.

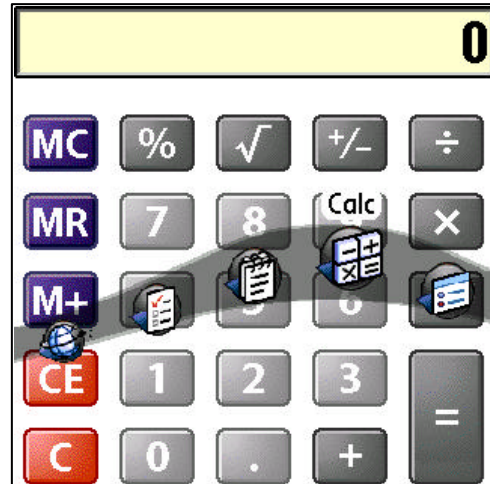
To hide all the applications in a particular category, uncheck the box next to the category name. Using this feature, you can reserve one category for unused icons, and uncheck it to hide the icons trying to sell you stuff that come preloaded on many handhelds.



To assign categories to different applications, select **Categorize** from the title bar *Apps* menu.

## Chapter 5 – Wave Launcher

Using the **Wave Launcher**, you can extend the power of TealOS beyond the *Home Screen* to switch cards (programs) even when inside other apps.



### Using the Wave Launcher

To bring up the Wave Launcher, do a quick swipe up from the bottom of the display, holding the pen down after making the stroke. A graphic “wave” of five icons will appear, highlighting the icon immediately above your finger/stylus. To select that application, just let go.

**HINT:** When bringing up the wave launcher, start in the very bottom center of the display and be sure to have your finger/pen moving when it first touches the screen. **Do not pause** before starting to move. If your device has a text input area, you may begin the stroke within the text writing area.

### Using Card Swipes

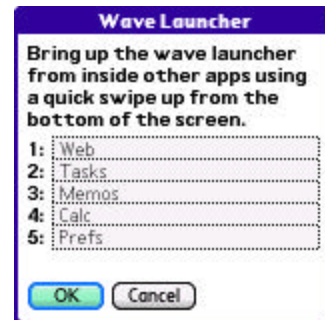
**Card Swipes** give you another way to switch cards without returning to the *Home Screen*. To do so, quickly swipe from one of the bottom corners of the screen to the other. An icon will briefly appear in the corner as the card is changed.

Swipes work like turning a page, so a swipe from right to left goes to the next card, and a swipe from left to right returns to the last.

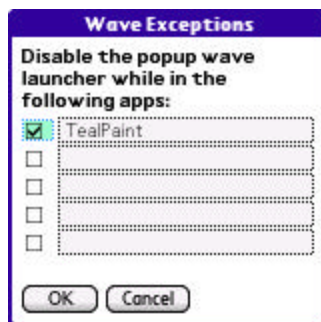


## Customizing the Wave Launcher

To select which application icons appear in the *Wave Launcher*, choose the *Wave Launcher* item from the title bar *Options* menu. In the resulting screen that opens, you can select each icon's mapping from all applications in main memory.



## Disabling the Wave Launcher



In some programs, drawing apps in particular, the normal stroke used to bring up the *Wave Launcher* serves another purpose.

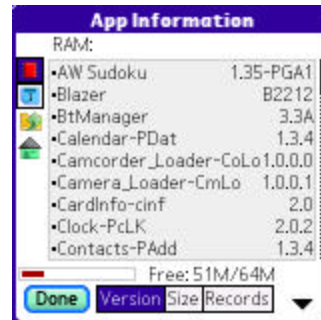
For these apps, you can disable the Wave Launcher and/or *Card Swipes* respectively using the *Wave Exceptions* and *Swipe Exceptions* menu items.

## Chapter 6 – Managing Applications

You can still launch the standard system launcher application using the **Run Std Launcher Once** menu item, or re-enable the system launcher temporarily using the **Re-Enable Std Launcher** menu. However, you can perform common application management functions from within the TealOS *Home Screen* using the following menus:

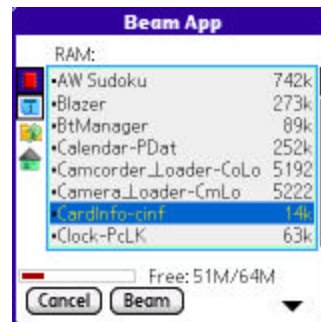
### Info

The Info Screen shows the version, size, or number of records for any application in memory or on your SD card.



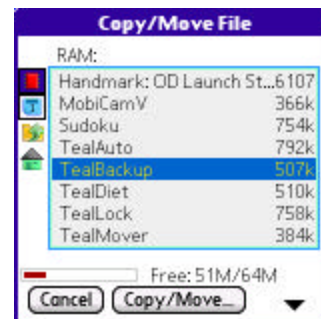
### Beam/Send

Select the *Beam* and *Send* menus to send a selected application to another device via infrared or Bluetooth.



### Copy

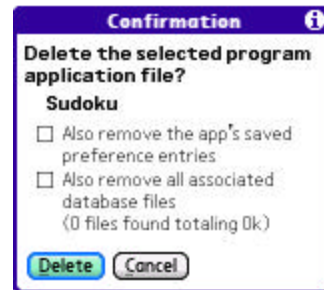
Select the *Copy* menu to copy or move an application between main memory and an SD card. Applications on an SD card should be stored in the *PALM/Launcher/* folder.



## Deleting Apps

To delete an application, choose the *Delete* menu. When deleting applications, you can optionally choose to delete the program's related data files and settings saved in the system preferences database. A program's data files and settings are identified as any files having the same Creator ID value as the application.

Normally, you want to leave these options checked. If so, the delete operation will act like the standard system Launcher.



## Appendix A – Revision History

Version 1.06 - February 23, 2009

- Added support for seeking to icon in launcher screen by entering first letter of app
- Added new “force scan” menu to regenerate icon cache files
- Fixed icon duplication from ROM apps that have been upgraded by new RAM version
- Fixed icon scrolling bug which caused inconsistent icon positions and inability to scroll to listbottom

Version 1.05 - February 21, 2009

- Improved responsiveness of cards to allow dragging while in movement
- Improved responsiveness of launcher screen to allow dragging while in movement
- Improved card ordering mode to automatically scroll when finger/stylus held at screen edge
- Improved registration nag screen to be less frequent
- Fixed bug where category selection screen did not show all apps
- Fixed compatibility with Treo650 power button

Version 1.03 - February 21, 2009

- Added ability to order cards using 5-way navigator control
- Fixed crash selecting card with 5-way control when in ordering mode

Version 1.02 - February 20, 2009

- Added ability to temporarily switch back to standard launcher (menu item)
- Added ability to map wave or quick launch bar icons to system launcher or TealOS
- Fixed menu bar from closing when opened with menu button
- Fixed graphic corruption or crash organizing cards on large screen devices

Version 1.00 – February 20, 2009

- Initial application release

## Appendix B – Contact Info

TealOS by TealPoint Software  
©2009 All Rights Reserved.

TealPoint Software  
454 Las Gallinas Ave #318  
San Rafael, CA 94903-3618  
We look forward to hearing from you.

Please visit us at [www.tealpoint.com](http://www.tealpoint.com), or email us at [contact@tealpoint.com](mailto:contact@tealpoint.com).

## Appendix C – Registering



Registering allows you to use the program past the 30 day expiration period and turns off registration reminders.

Currently, you may register by snail mail or online with a credit card and a secured server from the store where you downloaded the software. For the first option, send the following information on a sheet of paper separate from your payment.

- Product Name
- E-Mail Address (write clearly)
- HotSync User ID (Pilot Name Required for Passkey generation. It can be found on the main screen of the HotSync application on the Pilot as "Welcome \_\_\_\_\_" or in the corner on a PalmIII or higher)
- Check (drawn off a US Bank) or Money Order for (\$19.95 US). No international checks or money orders please.

## Appendix D – Products

Visit us online for our complete product line, including:

**SHORTCIRCUIT ( <http://www.tealpoint.com/softshrt.htm> )**

A new twist on gameplay fused from your all time action puzzle favorite games, connect falling conduit pieces into explosive loops in this frantic race against the clock.

**SUDOKUADDICT ( <http://www.tealpoint.com/softsudo.htm> )**

Sudoku Addict brings to your handheld the addictive worldwide puzzle craze that has displaced crossword puzzles in many newspapers in Great Britain and Japan.

**TEALAGENT ( <http://www.tealpoint.com/softagnt.htm> )**

Get news, movie times, stock quotes, driving directions, web pages and more without need for a wireless connection. TealAgent fetches and formats web-based content for offline viewing.

**TEALALIAS ( <http://www.tealpoint.com/softalia.htm> )**

Free up memory and make the most of external expansion cards. Placeholder 'Alias' shortcut files automatically find, load, and launch apps and data from external SD cards, increasing free main memory.

**TEALAUTO ( <http://www.tealpoint.com/softauto.htm> )**

Track and graph automobile mileage, service, and expenses with TealAuto, the complete log book for your car or any vehicle. Extensive customization options and unmatched in features and functionality.

**TEALBACKUP ( <http://www.tealpoint.com/softback.htm> )**

Backup your valuable data with TealBackup, supporting manual and automatic backups to SD/MMC/CF cards and Memory Stick, backups through HotSync, and optional compression and encryption.

**TEALDESKTOP ( <http://www.tealpoint.com/softdesk.htm> )**

Launch applications with TealDesktop, the themed replacement for the standard system launcher screen with tabs, multiple card folders, drag and drop, and more

**TEALDIET ( <http://www.tealpoint.com/softdiet.htm> )**

Shape up your life with TealDiet, the diet, exercise, and personal tracking application for mobile devices. Lose weight, build more muscle, and live healthier with TealDiet.

**TEALDOC ( <http://www.tealpoint.com/softdoc.htm> )**

Read, edit, and browse documents, Doc files, eBooks and text files with TealDoc, the enhanced doc reader. Extensive display and customization options; TealDoc is unmatched in features and usability.

**TEALECHO ( <http://www.tealpoint.com/softecho.htm> )**

Improve your Graffiti text input speed and accuracy, seeing what you write with TealEcho digital "ink". No more writing blind!

**TEALGLANCE ( <http://www.tealpoint.com/softglnc.htm> )**

See the time, date, upcoming appointments and todo items at power-up with TealGlance. The TealGlance pop-up utility and key guard comes up when you power up, letting you see your day "at a glance."

**TEALINFO ( <http://www.tealpoint.com/softinfo.htm> )**

Lookup postal rates, area codes, tip tables, schedules, airports, and info from hundreds of free TealInfo databases. Create you own mini-apps; a handheld reference library.

**TEALLAUNCH ( <http://www.tealpoint.com/softlnch.htm> )**

Launch applications instantly with the TealLaunch pop-up launcher and button/stroke-mapping utility. Map applications to button presses and pen swipes so you can get to your apps quickly.

**TEALLOCK ( <http://www.tealpoint.com/softlock.htm> )**

Secure and protect your handheld with TealLock, the automatic locking program with encryption and card support. TealLock has unmatched features and customization options for personal or corporate use.

**TEALMAGNIFY ( <http://www.tealpoint.com/softlens.htm> )**

Save your eyesight with TealMagnify, an ever-ready magnifying glass that works with most any program. TealMagnify lets you enlarge the screen for those times the text is too small to read.

**TEALMASTER ( <http://www.tealpoint.com/softmstr.htm> )**

Replace Hackmaster with TealMaster, the supercharged 100%-compatible system extensions manager. TealMaster adds enhanced stability, configuration and diagnostic features and PalmOS 5.0 hack emulation.

**TEALMEAL ( <http://www.tealpoint.com/softmeal.htm> )**

Save and recall your favorite restaurants with TealMeal, the personal restaurant database. With TealMeal's handy sorting and selection options, never ask "where to eat" again.

**TEALMEMBRRAIN ( <http://www.tealpoint.com/softmemb.htm> )**

Stop crashes and monitor your memory use with TealMemBrain, the application stack stabilizer. TealMemBrain boosts your stack space on OS3 and OS4 handhelds, eliminating causes of system instability.

**TEALMOVER ( <http://www.tealpoint.com/softmovr.htm> )**

Beam, delete, rename, and copy files with TealMover, the file management utility for SD/CF/MS cards. TealMover lets you see, move, modify, hex edit, and delete individual files.

**TEALMOVIE ( <http://www.tealpoint.com/softmovi.htm> )**

Play and convert high-quality video and synchronized sound with the TealMovie multimedia system. TealMovie includes a handheld audio/movie player and a Windows AVI/MPEG/Quicktime converter program.

**TEALNOTES ( <http://www.tealpoint.com/softnote.htm> )**

Insert freehand graphics anywhere with TealNotes "sticky notes" for Palm OS. TealNotes can be inserted into memos, to-do lists, address book entries--almost anywhere you currently have editable text.

**TEALPAINT ( <http://www.tealpoint.com/softpnt.htm> )**

Paint, sketch, or draw with TealPaint, the all-in-one mobile graphics paint program and photo editor. Highlights include 25 tools, 32 patterns, 49 brushes, zoom, layers, undo, & JPEG/GIF/BMP support.

**TEALPHONE ( <http://www.tealpoint.com/softphon.htm> )**

Supercharge the address book with TealPhone, the contacts replacement with superior interface and options. Highlights include enhanced display, search, phone-dialing, groups, and linking.

**TEALPRINT ( <http://www.tealpoint.com/softprnt.htm> )**

Print text and graphics to IR, serial, and Windows printers with TealPrint. With numerous connection options, TealPrint, is the all-in-one text and graphic printing solution.

**TEALSAFE ( <http://www.tealpoint.com/softsafe.htm> )**

Store your passwords, credit cards, PIN numbers, and bank accounts in the TealSafe data wallet. With maximum security and encryption, TealSafe is a must for features and security.

**TEALSCAN ( <http://www.tealpoint.com/softscan.htm> )**

Keep your device stable, up-to-date, and running smoothly with TealScan, the comprehensive system utility for PalmOS handhelds

**TEALSCRIPT ( <http://www.tealpoint.com/softscrp.htm> )**

TealScript adds Graffiti text input to Treo and Centro smart phones. For devices that already support Graffiti, TealScript adds a trainable system that supports both multi-stroke and Graffiti-1.

**TEALTRACKER ( <http://www.tealpoint.com/softtrac.htm> )**

Track time and expenses with a fast, easy to use interface that requires minimal effort. Generate reports and export data to a spreadsheet. TealTracker is your personal time clock.

**TEALTOOLS ( <http://www.tealpoint.com/softtool.htm> )**

Improve productivity with TealTools pop-up Palm Desk Accessories. TealTools includes a popup calculator, clock/stopwatch, preferences panel, editing panel, memopad, and a file/backup manager.

## Appendix E – Legal Notice

We at TealPoint Software are committed to providing quality, easy-to-use software. However, this product is provided without warranty and the user accepts full responsibility for any damages, consequential or otherwise, resulting from its use.

This archive is freely redistributable, provided it is made available only in its complete, unmodified form with no additional files and for noncommercial purposes only. Any other use must have prior written authorization from TealPoint Software.

Unauthorized commercial use includes, but is not limited to:

- A product for sale.
- Accompanying a product for sale.
- Accompanying a magazine, book or other publication for sale.
- Distribution with "Media", "Copying" or other incidental costs.
- Available for download with access or download fees.

This program may be used on a trial basis for 30 days. The program will continue to function afterwards. However, if after this time you wish to continue using it, please register with us for the nominal fee listed in the program.

Thank you.

### CUSTOMER LICENSE AGREEMENT

YOU ARE ABOUT TO DOWNLOAD, INSTALL, OPEN OR USE PROPRIETARY SOFTWARE OWNED BY TEALPOINT SOFTWARE, INC. CAREFULLY READ THE TERMS AND CONDITIONS OF THIS END USER LICENSE BEFORE DOING SO, AND CLICK BELOW THAT YOU ACCEPT THESE TERMS.

1. License. You are authorized to use the Software Product owned and developed by TealPoint Software, Inc. on a single hand-held computing device on a trial basis for thirty (30) days. If after 30 days you wish to continue using it, you are required to register with TealPoint and pay the specified fee. This license is not exclusive and may not be transferred. You may make one copy of the Software for back-up and archival purposes only.
2. Ownership. You acknowledge that the Software Product is the exclusive property of TealPoint Software, Inc, which owns all copyright, trade secret, patent and other proprietary rights in the Software Product.
3. Restrictions. You may NOT: (a) decompile or reverse engineer the Software Product; (b) copy (except as provided in 1 above) sell, distribute or commercially exploit the Software product; or (c) transfer, assign or sublicense this license.
4. Disclaimer of Warranty and Liability. TEALPOINT MAKES NO WARRANTY, EXPRESS OR IMPLIED, AS TO THE ACCURACY, COMPLETENESS OR FUNCTIONING OF THE LICENSED SOFTWARE, INCLUDING WITHOUT LIMITATION, WARRANTIES OF MERCHANTABILITY OR OF FITNESS FOR A PARTICULAR PURPOSE, ALL OF WHICH TEALPOINT DISCLAIMS. ALL LIABILITY IS DISCLAIMED AND TEALPOINT ASSUMES NO RESPONSIBILITY OR LIABILITY FOR LOSS OR DAMAGES OF ANY KIND, DIRECT OR INDIRECT, INCIDENTAL, CONSEQUENTIAL OR SPECIAL, ARISING OUT OF YOUR USE OF THE LICENSED SOFTWARE, EVEN IF ADVISED OF THE POSSIBILITY THEREOF.
5. Termination. You may terminate this Agreement at any time by destroying your copy(ies) of the Software Product. The Agreement will also terminate if you do not comply with any of its terms and conditions, at which time you are required to destroy your copy(ies) of the Software Product and cease all use.
6. Applicable Law. This Agreement is governed by the laws of the State of California.