

For Windows Mobile 6, Windows Mobile 5 and Smartphone 2003 devices without touch screens

## VISUAL USERS' GUIDE

### Purchasing Photo Contacts PRO 5

To purchase Photo Contacts PRO please visit our website at:

[www.pocketX.net/pro-sm](http://www.pocketX.net/pro-sm)

### High Quality Ringtones

For a limited time, get 20% off our original High Quality ringtones at  
[www.pocketx.net/store](http://www.pocketx.net/store) Use promotion code **RING20** at checkout.

### See also:

Most up to date Usage Tips and answers to Frequently Asked Questions are available on our website at: [www.pocketX.net/pro-sm](http://www.pocketX.net/pro-sm)

# Table of Contents

Topic	Page
Introduction	<b>3</b>
Feature Overview	<b>4</b>
<b>Installation, Un-installation</b>	<b>5</b>
Browsing Contacts and viewing contact details	<b>6</b>
How do I assign contact photos?	<b>7</b>
Assigning and cropping photos	<b>8</b>
The Photo Manager	<b>9</b>
Advanced Photo Caller ID/SMS ID	<b>10</b>
Distinctive Ringtones, SMS and Email Tones	<b>11</b>

Topic	Page
Ringtone and SMS Tone Managers	<b>12</b>
Advanced Phone Profiles	<b>13</b>
Call Filtering with SMS Answering Machine	<b>14</b>
Automatic and Temporary profiles	<b>15</b>
Auto-Profile Manager/Scheduler	<b>16</b>
Using Temporary Profiles	<b>17</b>
Home Screen Enhancements	<b>18</b>
Photo Speed Dialing, Quick SMS, Sending email, SMS messages and photos	<b>19</b>
Contact Search, Category Filtering and Contact Sorting options	<b>20</b>

Topic	Page
Creating, Editing, Deleting contacts, Beaming photos	<b>21</b>
Assigning many pictures at once via SMARTNAME (TM) (1/2)	<b>22</b>
Assigning many pictures at once via SMARTNAME (TM) (2/2)	<b>23</b>
Program Skins (Themes)	<b>24</b>
Program Options—General	<b>25</b>
Program Options— Caller ID	<b>26</b>
Program Options— Home Screen	<b>27</b>
Obtaining Help, Purchasing and Additional Information	<b>26</b>

# Welcome to Photo Contacts PRO!

**Photo Contacts PRO 5** integrates innovative features and advanced technology that will significantly improve your mobile experience and make your phone more useful than ever.

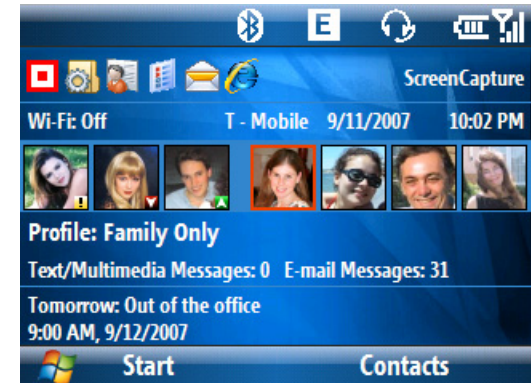
With our Advanced Automatic Profiles you will never be disturbed in a meeting or at night by an incoming call or an unwanted caller. Recent caller and favorite contact pictures are available right on your Home Screen for quick dialing and SMS.



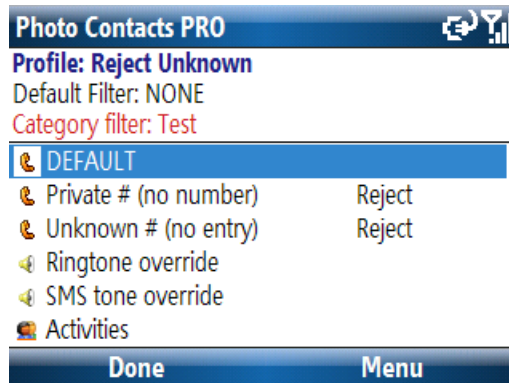
Advanced Contact Management with Pictures and multiple views



Easily see who is calling with our Business Photo Caller ID—also adds Silence, Speakerphone and Reject+SMS buttons



Home Screen Plugin shows recent caller pictures and favorite contacts for quick dialing—'combined' mode shown above.



Reject undesirable callers or unknown or private calls with Call Blocking and Filtering



Automatic Profiles detect your meetings or change profiles on a timed schedule



Distinctive SMS and Email tones so you instantly know who the message is from

# Feature Overview

Photo Contacts PRO 5 encompasses the following main features:

- ◆ **Browse contacts with pictures and style** - 4 fully featured and intelligently designed contact views make browsing contacts a pleasure
- ◆ **Ringtone Manager - Easily assign Distinctive Ringtones to contacts, categories and unknown and private callers**
- ◆ **SMS/Email Tone Manager - Easily assign Distinctive SMS/Email sounds to contacts, categories and text messages from unknown numbers**
- ◆ **Home Screen Enhancements** - Call favorite contacts, see recent caller pictures, control phone profiles and return calls right from your Home Screen
- ◆ **Advanced Phone Profiles** - Fully customizable Phone Profiles let the user group and personalize Call Filtering, Ringtone, SMS Tone, Ring Volume, Ring Type, SMS Volume, SMS Type, Bluetooth and phone Sound settings.
- ◆ **Profile Scheduler** - take full control of your phone and incoming calls by automatically switching profiles based on your schedule (based on hours, days and/or meetings in your calendar)
- ◆ **Automatic Profiles** detect meetings and appointments and automatically switch phone settings when appropriate—multiple meeting triggers
- ◆ **Timed Temporary profiles** enable you to switch to a certain profile temporarily (silent for 2 hours when in a cinema for example), automatically switching back after the time passes
- ◆ **Advanced Call Filter enables Complete Privacy** - Automatically Reject or Hang Up unwanted callers, groups and unknown or private numbers
- ◆ **SMS Answering Machine integrated with profiles** - Automatically Reject and send an SMS message to callers notifying them you're busy
- ◆ **See clearly who is calling you - Full Screen and Business Photo Caller ID** technology uses large pictures and text for caller id information
- ◆ **Incoming SMS notification with SMS Picture ID and Quick SMS Reply**
- ◆ **Ringtone and SMS tone overrides enable setting ring tones per profile**
- ◆ **Quick SMS Messaging. Quickly send custom or pre-defined SMS messages**
- ◆ **Assign photos to contacts easily** by choosing photos taken by the phone's camera, transferring photos from your PC or importing Outlook pictures
- ◆ **Crop and adjust contact photos directly on the phone** with the awesome photo Adjust Engine
- ◆ **Never loose your contact to photo associations** and assign many photos to contacts at once with SmartName™
- ◆ **Group contacts easily with the category filter, intelligent text search and a smart contact detail view.**
- ◆ **Find contacts fast using the intelligent contact search** that lets you filter by contact name, company, title - or home, work or mobile telephone numbers when you search for contacts
- ◆ **Full integration with the contact database lets you view, create, edit, delete and duplicate contact information**
- ◆ **PhotoBeam technology lets you easily share contact photographs via infrared**
- ◆ **International Photo Caller ID support with intelligent Caller ID matching** and number formatting
- ◆ **Capability to sort contacts by First Name, Last Name, Company or the Outlook "File As" field**
- ◆ **Multiple color and background skins** bundled with the program let you personalize the look and feel of Photo Contacts PRO

**Compatible with Windows Mobile 5/6 Smartphone devices** including devices with portrait and landscape screens with and without integrated key-boards.

# Installing/Un-installing and running Photo Contacts PRO

## Installing Photo Contacts PRO onto your phone

**NOTE:** Please save the installation package in case you need to re-install the software in the future.

### » For Windows Vista/XP/2000/NT users:

1. Un-install the demo version (if it is installed) by going to Start>Settings>Remove Programs.
2. Turn the phone off, wait 10 seconds and turn it back on (important).
3. Connect your phone to your computer and establish an Activesync or Windows Mobile Device Center connection.
4. Run the installer - open the installation package .zip file you downloaded when you purchased the software. The package contains the Photo Contacts PRO desktop installer .exe file (photocontactspro\_...) as well as program documentation. Double click on this file to start the installation process.
5. Check your phone's screen to continue the installation. If prompted to choose the installation location on the phone, select device internal memory (required for best performance).

Photo Contacts PRO will start automatically after installation by importing your Outlook pictures and prompting you to enable Home Screen enhancements.

**Congratulations!** You can now open Photo Contacts PRO by pressing the Contacts button on the Home Screen or by accessing the Start>Programs menu on the phone.

» **Apple MAC users—please go to [www.pocketx.net/support](http://www.pocketx.net/support) to request a CAB file.**

## Un-installing the demo or full version of Photo Contacts PRO

To un-install either the demo or a full version go to **Start>Settings>Remove Programs** and select the program from the list. Follow up with a power cycle (turn-off, turn-on).

**NOTE:** Photo Contacts PRO needs to always run in the background to manage Profiles, Photo Caller ID, Ringtones and Call Filtering. Make sure that it is not closed if you use a "Task Manager" program on the phone.

**TIP:** Photo Contacts PRO is automatically associated with the Contacts button/icon on your phone. If you wish to run the regular Contacts program you can do so by running Contacts (default) from the START menu.

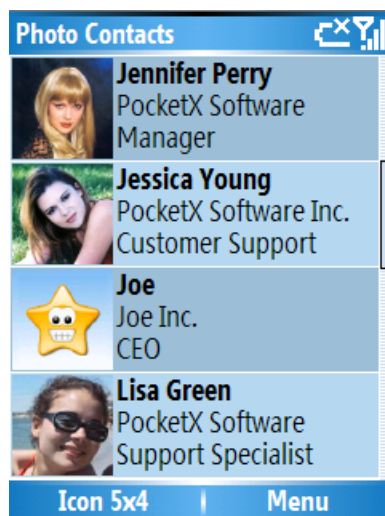
# Browsing Contacts and Contact Details

Photo Contacts PRO includes four different photo/contact browsing views (press the left soft-key to cycle through views) The views differ from screenshots shown below if your phone has a landscape screen:

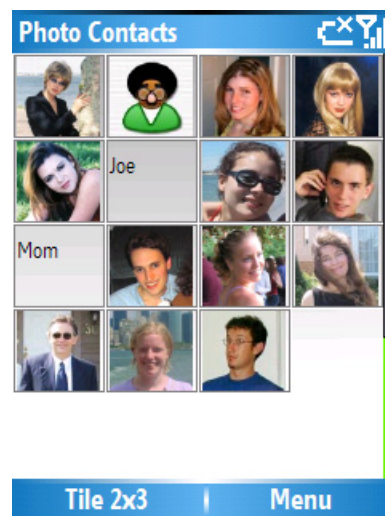
- ▶ **3x2 Tile View** shows 6 contact photos at a time with contact names. This view is designed for easy Photo Dialing.
- ▶ **4x1 List View** shows 4 contact photos with company names and contact titles.
- ▶ **5x4 Icon View** shows 20 photos at a time for fast dialing. If a photo is not found, the name of the contact is shown.



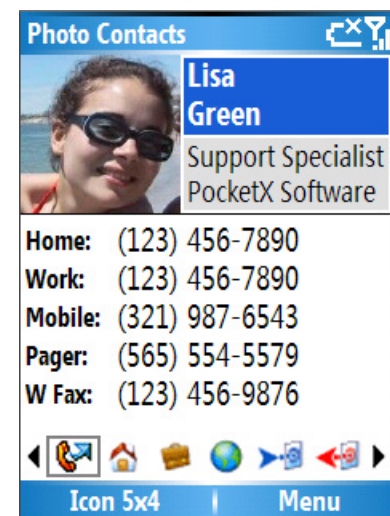
3x2 Tile View



4x1 List View



5x4 Icon View



Detail View

- ▶ **Detail View** shows one contact photo at a time with detailed contact information grouped in four logical sections (press left/right to toggle, up/down to scroll contacts): Phone Numbers—Home Address—Work Address—Email/Web Information—Beam Photo—Receive Photo

Each one of the views utilizes the Smartphone's joystick and the phone BACK button. The program by default starts in **Page Mode** where pressing the up/down joystick buttons pages through contacts and left/right toggles the active category. Pressing the joystick's ACTION button (press the joystick in) once will lead you into the photo **Selection Mode**. You will now see a red selection outline around the selected contact picture. You can use the joystick to select a contact, call the contact by pressing the TALK button or view detailed contact information by pressing the ACTION button again. Pressing the BACK button will lead you back to the **Page Mode** (no selection outline shown).

**NOTE:** When you wish to show a large, full screen photo of the contact, pressing the **STAR \*** key when the contact is selected will zoom the photo.

**TIP#1:** Press the joystick Left-Right buttons to toggle the Active Contact Category when in Page mode (no selection outline)

**TIP#2:** To search for a contact simply start typing on the keypad or the keyboard on your phone.



# How do I assign contact photos?

There are four ways to assign contact photographs with Photo Contacts PRO:

## PHONE CAMERA

If the device has an integrated camera then simply select a contact, press Menu>Contact>Photo>Assign and browse to the folder where the camera stores photos on your device. This is most likely the **\My Documents\My Pictures** folder. See the following page for detailed instructions.

## COPY FROM COMPUTER

First re-size then copy photos from your desktop/laptop computer to your phone via Activesync/Windows Mobile Device Center. Assign them in Photo Contacts PRO by selecting a contact and pressing Menu>Contact>Photo>Assign.

## SMARTNAME™

The best way to assign many large, clear photos is the **SmartName** method. See the SmartName section (pages 22, 23) for more information. This is as easy as cropping and naming your photos on your desktop computer and then transferring them onto the phone. This method allows you to assign many large and clear pictures easily.

## OUTLOOK PICTURES

Photo Contacts PRO will import your Outlook pictures automatically on first start. However, Outlook pictures are of low quality as Outlook resizes them to a small size. Once you get more familiar with the program, we recommend assigning larger pictures by using one of the first 3 methods above. You can always import/export photos from Outlook manually by going to Menu>Options>General in the program.

**NOTE:** If your phone does not have an integrated camera or if you wish to use digital camera pictures, you will need to use Activesync/Windows Mobile Device Center to copy the photos from your computer to the phone before assigning them. We recommend using our SmartName method for associating many photos to contacts at once in this case (please see the SmartName section).

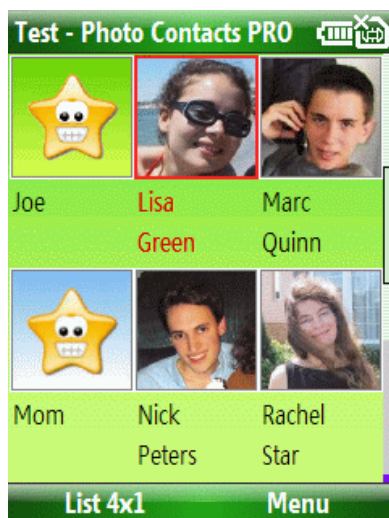
**TIP:** Unless your phone has a lot of free program memory it is generally not possible to directly use photographs taken by a regular digital camera due to their large size. Images up to 2 Mega-pixels (1200x1600 pixels) will work on most newer Smartphone devices but larger images need to be resized on the PC before assigning.

We recommend using the very good and easy to use IrfanView photo viewer/editor ([www.irfanview.com](http://www.irfanview.com)) for the resizing task.

# Assigning and cropping photos

With the Photo Contacts PRO Photo Browser you can easily assign photos to contacts on your phone. You can also crop and adjust photos using the Crop Engine. This is especially useful when assigning photos taken by a phone's camera.

Follow these steps to assign an already existing picture to a contact:



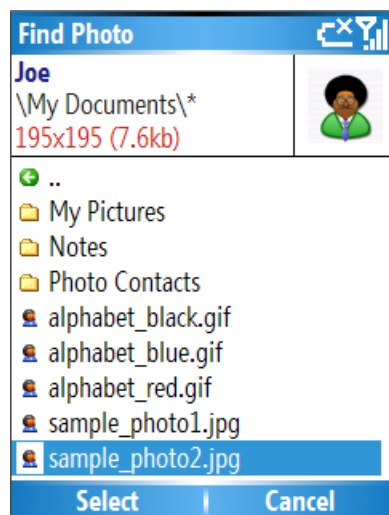
## STEP #1—Select a contact

Press the middle joystick "action" button to enter contact Selection Mode and then use the joystick to select a contact. You will see a red outline around the selected contact.

Now Press:

**Menu>Contact>Photo>Assign**

Selecting **Assign** will bring up the Photo Browser that lets you find a picture stored anywhere on the phone or a memory card.

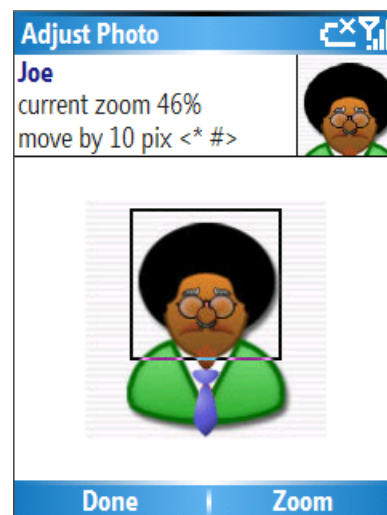


## STEP #2—Find a picture

If you have a camera phone, the pictures are most likely stored in the **\My Documents** or **\My Documents\Pictures** folder.

Use the joystick to select a picture you wish to assign and then press **Select**.

**NOTE:** Photo Contacts PRO comes bundled with two sample photos as well as Alphabet maps you can use for contact pictures.

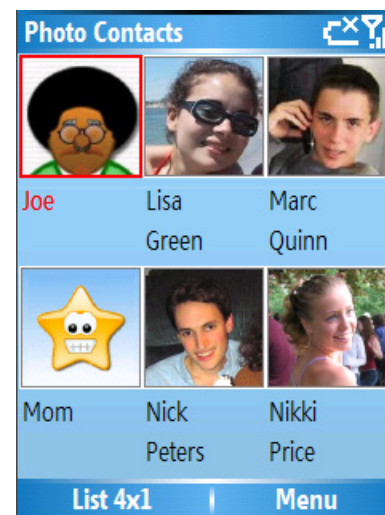


## STEP #3—Crop the picture

After you have located and selected a photo, you can adjust it using the Crop Engine.

Use the right soft-button to switch between the Zoom and Move modes.

In **Move** mode pressing the joystick buttons will select a portion of the image to capture. In **Zoom** mode, pressing the joystick buttons will size the selection. In both modes, pressing \* and # keys will decrease or increase the sizing increments.



Once you are satisfied with the selection, press the **Done** button. This will complete the photo assign process and you will see the contact picture assigned to the selected contact.

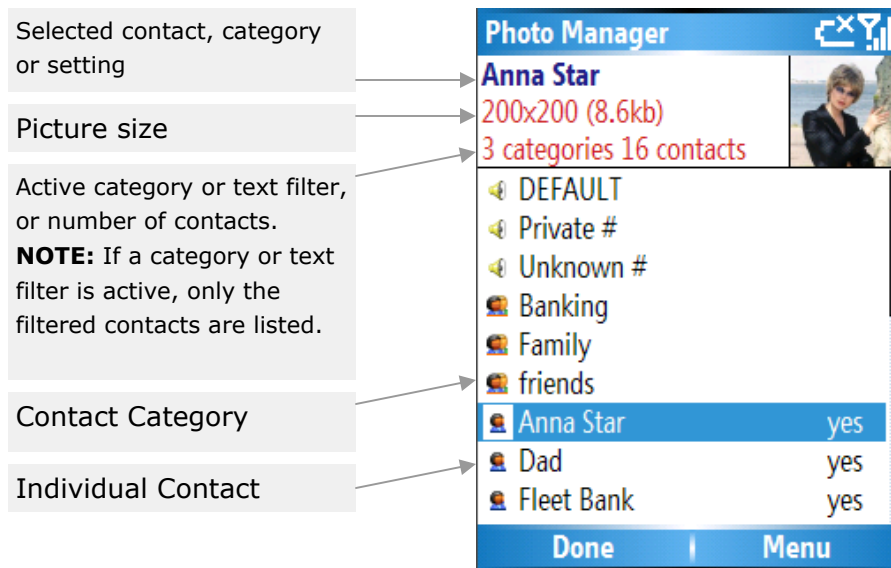
**NOTE:** The image is automatically saved into the "Photo Location" folder using the image resolution as defined in the Menu>Options screen in Photo Contacts PRO.

**NOTE:** Photos can be assigned to contacts that have either a First Name, Last Name, both First and Last names or Company name.



# The Photo Manager

Photo Contacts PRO features a photo manager that can be used to assign photos to contacts and categories (groups of contacts) as well as assign caller id pictures for Default, Private and Unknown callers. To open the photo Manager, press **Menu>Photo>Manager**.



**NOTE:** Individual contact pictures supersede pictures assigned to contact categories. If a contact belongs to more than one category, the picture assigned to the first category (in alphabetical order) will be shown for the contact.

## DEFAULT

This setting allows you to assign a default caller id photo for all callers that have no picture assigned.

## Private #

This setting allows you to assign a caller id photo to private calls (i.e. Incoming calls without a phone number).

## Unknown #

This setting allows you to assign a caller id photo to Unknown callers (i.e. Incoming calls with the phone number not listed in the contact database).

Once you select an item to assign a photo to, press **Menu>Assign** to open the photo browser and find a picture. Alternatively, press **Menu>Adjust** to adjust the picture, or **Menu>Remove** to delete the contact picture.

# Advanced Photo Caller ID and incoming SMS notifications

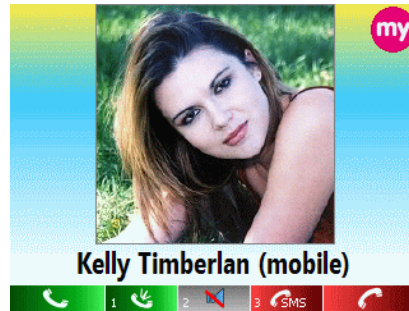
Photo Contacts PRO features advanced Photo Caller ID technology that works by displaying a large, easy to see photograph of the person that is calling while the phone is ringing. It also enables additional features—Silence, Speakerphone Answer and Reject+SMS.

The program will intelligently match the phone number of the caller to your Outlook contact database. The name and phone number of the person calling is displayed together with the photo of the caller. There are six Photo Caller ID modes offered by Photo Contacts PRO:

1. **Full Screen Photo Caller ID** displays a large photo of the caller during an incoming call.
2. **Business Photo Caller ID** displays a medium sized picture along with the name, title and company name of the incoming caller displayed with large text for easy readability.
3. **Simple Photo Caller ID** displays a picture bigger than what is regularly shown without Photo Contacts.
4. **Themed Photo Caller ID** displays a medium sized photo utilizing the theme background.
5. **Large Text**—uses extra large text for caller id information.
6. **Large Photo**—shows a photo filling the screen (for best results use SmartName to assign a photo matching your screen resolution (240x320 or 320x240).

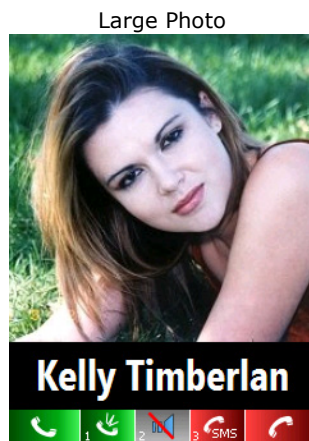


Full Screen

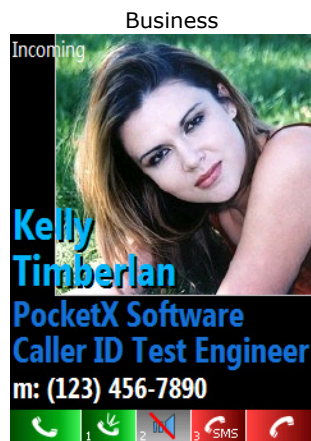


Themed

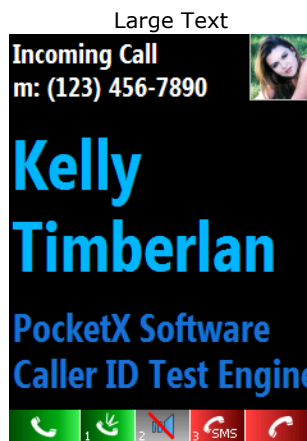
Pastel theme shown on a landscape device



Large Photo



Business



Large Text

Business Black theme shown on a portrait device

## Additional Buttons enable extra features during an incoming call

Our Photo Caller ID adds 3 new buttons—Silence (press 2), Speakerphone Answer (press 1) and Reject+SMS (press 3). Buttons can be pressed during an incoming call.

The left and right soft-keys are used to reject/answer the incoming call in case of call waiting or a regular call. You can also use the hardware ANSWER/IGNORE buttons to answer or reject the call (active call is rejected in case of call waiting).

## Incoming SMS Notification with SMS Picture ID

This feature shows the incoming SMS message with the picture of the sender right after the message arrives. This feature allows you to quickly read and respond to text messages.

**NOTE:** If a photo is not assigned to a contact the program uses the Large Text mode that uses **extra large font** to show easily readable caller id information.

# Distinctive Ringtones, SMS and Email Tones

Photo Contacts PRO enables you to assign distinctive ringtones to contacts, contact categories and unknown and private callers on your SmartPhone.

In addition, the program enables distinctive SMS and Email tones for contacts, categories and unknown numbers. The same tone is used for SMS and Email tones.

## Assigning a distinctive Ring Tone

To assign a ring tone to a contact, select a contact picture and press **Menu>Contact>RingTone>Assign**.

This will open the tone Browser that lets you find a ringtone anywhere on your device or a memory card.

**Note: Ringtones that come bundled with the phone are stored in the \Windows\ folder on the device.**

Once you have located the desired ringtone, press **Select** to complete the process. You can also preview rings by tapping on the **Menu>Play** button.

Once the ringtone is associated with the contact you will see a small ring note icon on the bottom right of the contact picture. When that contact calls you, their ring tone will play.

To see all the ringtone associations and to assign ringtones to categories, unknown and private callers use the Ringtone Manager by going to **Menu>Manage>Ringtones**.

## Assigning a distinctive SMS/Email Tone

To assign an SMS tone to a contact, select a contact picture and press **Menu>Contact>SMS/Email Tone>Assign**.

This will open the tone Browser that lets you find a sound file anywhere on your device or a memory card.

**Note: Sounds that come bundled with the phone are stored in the \Windows\ folder on the device.**

Once you have located the desired sound, press **Select** to complete the process. You can also preview sounds by tapping on the **Play** button.

Once the SMS tone is associated with the contact you will see a small yellow icon on the bottom right of the contact picture. When that contact sends you an SMS their tone will sound.

To see all the SMS tone associations and to assign sounds to categories, and unknown numbers use the SMS Tone Manager by going to **Menu>Manage>SMS Tones**.

**Note:** For best performance, short sounds should be used for SMS tones—up to 10 seconds in length is recommended.

### A note about ringtone/sound storage locations

While memory cards can be used to store ringtones and sounds, we strongly recommend using the **built-in-storage memory (or file store)** on the device.

This will ensure that sound files are always available when they are needed. Memory cards have slow wake-up time problems on most Pocket PC and Smartphone devices if the device is in standby mode and a new call comes in.

### Supported Ringtone and SMS tone file formats

Photo Contacts PRO lets you assign .wav, .mid, .wma and .mp3 files but their use for ringtones/sms tones is device dependent.

**Ringtones**—Windows Mobile 5/6 devices support MP3, WMA, WAV and MID ring tones.

**SMS/Email Tones**—Windows Mobile 5/6 devices support MP3, WMA, WAV and MID SMS sounds.

# Ringtone and SMS/Email Tone Managers

Photo Contacts PRO also features a Ringtone Manager that enables you to easily assign ring tones to contacts, contact categories, and private and unknown numbers on one screen. Press **Menu>Manage>RingTones** in Photo Contacts PRO to activate it. A similar SMS/Email Tone manager is also available by pressing **Menu>Manage>SMS/Email Tones**.

To assign a ringtone, select a list item and press **Menu>Assign** to browse for a ring. Press **Menu>Remove** to clear a ringtone setting or **Menu>Use Last** to use the ringtone last assigned for the selected item.

The screenshot shows the 'Ringtone Manager' screen. On the left, there are five grey boxes with arrows pointing to specific parts of the interface: 'Selected contact, category or group setting.' points to the top header area; 'Currently assigned ringtone.' points to the 'Ring: Fantasy .mid' line; 'Number of contacts or active category or text filter.' points to the 'Last Assigned: Tremor .mid' and '4 categories 15 contacts' lines; '\* If a filter is enabled only the filtered contacts are listed in the Ringtone Manager.' points to the list of categories; 'Contact Category' points to the 'Family' category which is highlighted in blue; 'Individual Contact' points to the 'Anna Star' contact at the bottom of the list. The interface itself has a blue header 'Ringtone Manager' with a close icon. Below the header, it shows 'Category: Family', 'Ring: Fantasy .mid', and 'Last Assigned: Tremor .mid'. A summary line says '4 categories 15 contacts'. A list of categories follows: 'DEFAULT' (Window...), 'Private #' (Gossip ....), 'Unknown #' (LaDiDa...), 'Banks', 'Business' (Tremor ...), 'Family' (Fantasy ...), 'friends' (Jig .mid), and 'Anna Star'. At the bottom are 'Done' and 'Menu' buttons.

## Group Settings for Ringtones

### DEFAULT:

This is the default Ring Tone that will play when a contact or a category does not have a ringtone assigned. This setting also reflects and changes your phone's default ringtone.

### PRIVATE #:

This ringtone will play for private numbers when incoming caller ID information is hidden or not available.

### UNKNOWN #:

This setting is for a ringtone that plays when an incoming call is from a number not listed in the contact database.

## Ringtone Preview

The Ringtone Manager can preview (.wav, .wma or .mp3) custom ringtones. To preview a ringtone, select an item in the list and press Menu>Play.

**Note:** Individual contact ringtones will supersede ringtones assigned to contact categories if the contact belongs to the category.

Want better ringtones? Get 20% off our original High Quality rings at **[www.pocketx.net/store](http://www.pocketx.net/store)** . Use promotion code RING20 at checkout.

# Advanced Phone Profiles

Photo Contacts PRO enhances your mobile experience with advanced phone profiles. Advanced profiles combine phone Sound Settings (for incoming calls, incoming SMS, sounds, notifications, reminders and alerts) with Call Filtering, SMS Answering and Bluetooth. The program includes a pre-defined set of profiles that are fully customizable by the user.

## Running Profiles

Advanced profiles are enabled by default and can run independently, automatically or in temporary mode. Advanced profiles enhance the standard built-in phone profiles.

## Switching Profiles

Profiles are switched by selecting them from the phone's **Home Screen** or from inside Photo Contacts PRO (Menu>Profile>).

## Customizing Profiles

To customize profiles, open the Profile Manager by pressing **Menu>Manage>Profiles** in Photo Contacts PRO. The currently active profile will be shown allowing you to specify call filtering options. To select a different profile press Menu>Profile>Select and pick it from the list.

## Renaming Profiles

To change the name of a profile, open the Profile Manager (Menu>Manage>Profiles) and then press Menu>Edit Profile>Rename and enter a new name.

## Profile Options - Sound and Bluetooth Settings

These are sound settings that can be applied to each profile. Note that settings set in the Call Filter menu for a profile supersede all Sound settings. If bypass is set, Photo Contacts PRO will not control the setting.

**SYSTEM VOLUME:** Off-1-2-3-4-Loud, Bypass\*

**RING STYLE:** Ring, Ring Once, Increasing Ring, Vibrate, Pulsing Vibrate, Multiple Vibrate, Vibrate and Ring, Vibrate then Ring, Bypass\*

**RING VOLUME:** Off-1-2-3-4-Loud, Bypass\*

**SMS TYPE:** Play Sound, Vibrate, Vibrate twice, Vibrate then Sound, Vibrate and Sound, Bypass\*

**SMS VOLUME:** Off-1-2-3-4-Loud, Bypass\*

**ALARM TYPE:** Play Sound, Increasing, Vibrate, Pulsing Vibrate, Multiple Vibrate, Vibrate then Sound, Vibrate and Sound, Bypass\*

**ALARM VOLUME:** Off-1-2-3-4-Loud, Bypass\*

**REMINDER TYPE:** Play Sound, Increasing, Vibrate, Pulsing Vibrate, Multiple Vibrate, Vibrate then Sound, Vibrate and Sound, Bypass\*

**REMINDER VOLUME:** Off-1-2-3-4-Loud, Bypass\*

**NOTIFICATION TYPE:** Play Sound, Increasing, Vibrate, Pulsing Vibrate, Multiple Vibrate, Vibrate then Sound, Vibrate and Sound, Bypass\*

**NOTIFICATION VOLUME:** Off-1-2-3-4-Loud, Bypass\*

\*If Bypass is set, Photo Contacts PRO uses the regular phone settings and does not apply changes inside the profile.

**Bluetooth:** On, Off or Bypass (**Press Menu>Bluetooth to change**)

## Bundled Profiles

These advanced profiles are pre-configured and ship with the program. They are fully customizable in **Menu>Manage>Profiles**.

**Normal**—this profile will set the phone to medium volume.

**Silent**—this profile sets all incoming calls/SMS to silent.

**Vibrate**—this profile sets all calls/SMS to vibrate.

**Outdoor (Loud)** —this profile sets volume for all calls/SMS to Loud and Vibrate, suitable for outdoor use

**Indoor (Quiet)** —this profile sets the volume to 1, suitable for indoor use.

**Meeting**—this profile is by default set to Vibrate for all calls and is fully customizable to allow or disallow certain callers.

**Family Only**—this profile can be customized by the user to reject all calls except Family members. To use this profile, assign the "Family" category to your family contacts, then inside the Profile Manager, set REJECT for DEFAULT and BYPASS for the Family category.

**Reject All Calls**—this profile is set to reject all incoming calls (and forward to voicemail if available).

**Reject Unknown**—this profile will reject only unknown and private callers.

**HangUp Unknown**—this profile will hang up only unknown and private callers.

**SMS Auto Answer** —this profile will reject all calls and send an SMS message to the callers.

**Bypass** —if this profile is selected, Photo Contacts PRO will not set sounds or call filtering on the phone.

**Silent Sleep (automatic)**—this profile is set to always silence the phone between 11PM and 7AM. The rest of the time the phone will run the Normal profile.

**Auto Meeting (automatic)** —this profile is set to track your calendar and apply the Meeting profile (set to vibrate) when it detects that the meeting has started.

You can easily customize the above profiles to suit your needs. You can also create your own new profiles.



# Call Filtering with SMS Answering Machine




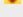
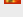
## Call Filtering/Call Blocking

Photo Contacts PRO includes fully integrated per contact and per category Call Filter that allows you to set Profiles to block incoming calls. The program includes a pre-defined set of profiles that are fully customizable by the user.

In Photo Contacts PRO, call filtering is combined with Profiles. Profiles combine call filter, sound and Bluetooth settings. They can be enabled or disabled and are used as a basis for automatic or temporary profiles.

To open the Call Filter Manager, press **Menu>Manage>Call Filter** in Photo Contacts PRO. The currently active profile will be shown allowing you to specify call filtering options. To select a different profile press **Menu>Profile>Select** and pick it from the list.

These Call Filtering settings can be applied:

-  **REJECT:** The call is automatically rejected and the caller is sent to Voicemail (red x icon)
-  **HANGUP:** The call is automatically hung up (caller just hears a 'click' as if the line did not exist)
-  **SILENT:** The call is permitted to come through but the ring is silent (blue x icon)
-  **VIBRATE:** The phone vibrates (V icon)
-  **REJECT+SMS:** The call is automatically rejected and an SMS message is sent to the caller's mobile number (red x icon)
- BYPASS:** The call is allowed to bypass the call filter in case of a DEFAULT setting (no icon shown)

**Note:** Call Filter settings supersede all Sound Settings if they overlap (in case of silent/vibrate).

## Ringtone and SMS Tone Override via Profile

To set a profile to play a specific ringtone or SMS tone open the Call Filter/Profile manager (Menu>Manage>Call Filter) and specify settings for Ringtone and SMS/Email override.

If overrides are set, they will be used for all callers. This is most useful for extra loud or very quiet profiles when a specific sound is preferred for all callers.

Active Profile Name

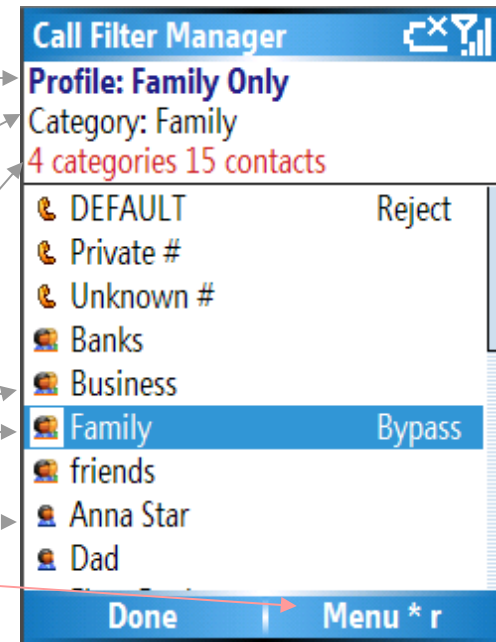
Selected contact, category

Number of contacts, or active category or text filter.  
\* If a text or category filter is active only the filtered contacts are listed.

Contact Categories

Individual Contacts are below the categories

Sound and Bluetooth Settings (menu)



Call Filter/Profile Manager

## SMS Answering Machine

The SMS Answering machine enables you to automatically reject certain or all callers and automatically send them a custom SMS message (eg. "I am busy, please call back in 30 minutes").

### Enabling the SMS Answering Machine

Press **Menu>Manage>Call Filter** to open the Call Filter/Profile manager. The SMS Answering Machine can be enabled by applying the Reject+SMS call filter setting to a contact, DEFAULT, PRIVATE, UNKNOWN calls or a Category in the call filter manager.

In this mode, the caller will be rejected and a custom SMS message will be sent to their mobile number. If the caller is unknown or the call comes from a defined home/work number, no SMS message will be sent.

### Setting the SMS Message text

To set the SMS message text press Menu>Edit Profile>"Set SMS Message" inside the Call Filter or Profile manager. The SMS message is a global per-profile setting.

# Automatic and Temporary Profiles

One of the most useful features of Photo Contacts PRO is Automatic Profiles. Automatic profiles use advanced profiles and change them automatically based on a timed schedule, or by tracking meetings and appointments in your calendar.

Automatic profiles can be used to mimic your daily schedule and automatically apply different settings. The program includes a pre-defined set of auto profiles that are fully customizable by the user.

## Customizing Automatic Profiles

To create your own daily schedule and/or meeting triggered automatic profile, press **Menu>Manage>AutoProfiles**. See the following page for more information.

Photo Contacts PRO can automatically switch profiles based on meetings or a hourly and daily schedule. Specific profiles can be applied to the following items:

**DEFAULT** - designates a profile that will be used as default when the advanced profile is active and no meetings/appointments are detected.

**Hourly profile changes** can be added by selecting **Item>Add Timed Item**.

**Meeting** - this is a default setting that can be used to trigger a profile change based on all meetings or a specific meeting in your Calendar. Additional meeting triggered changes are added by pressing **Item>Add Meeting Item**.

**Meeting1,2,3+** - additional meeting triggers can use a specific meeting category or text in the meeting subject to trigger a profile change. These will supersede the first meeting trigger.

To apply a profile to the above two settings select an item from the list and press Menu>Item>Edit from the menu.

## Enabling Automatic Profiles

Auto-Profiles are enabled by selecting them from the Home Screen or from inside Photo Contacts PRO (Menu>Profile>).

## Temporary Profiles

Temporary profiles are used when you need to quickly set your phone in a specific state for a limited period of time.

## Starting a Temporary profile

To start a temporary profile press **Menu>Profiles>Temporary Profile** in Photo Contacts PRO. You can also use the Profile section of the Home screen plugin to start a temporary profile.

# Automatic Profile Manager and Scheduler

Automatic Profiles allow you to take full control of your phone and incoming calls by automatically switching profiles based on your schedule (based on hours, days and/or meetings in your calendar).

Automatic Profiles can also detect meetings and appointments and automatically switch profiles when appropriate. Multiple meeting triggers based on a category defined in the meeting are available.

The AutoProfile manager makes it easy to specify a schedule that Photo Contacts PRO will follow.

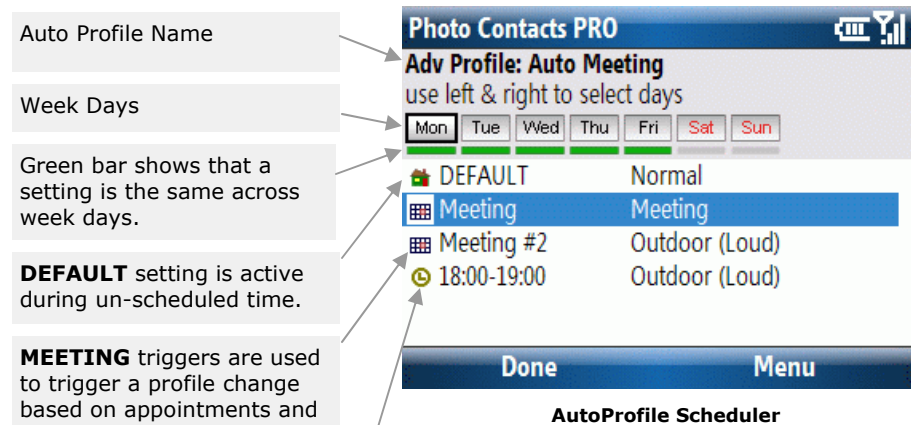
To open the AutoProfile Manager, tap **Tools>Manage>AutoProfiles** in Photo Contacts PRO.

## Common Actions

The program includes a pre-defined set of auto-profiles that are fully customizable by the user.

- ◆ To switch to a different profile press **Menu>Set Profile**.
- ◆ To change the name of the selected profile, press **Menu>Edit Profile>Rename**.
- ◆ To clear all settings inside a profile (including the name), press **Menu>Edit Profile>Clear Settings**. A profile will not appear in the main profile list until a new custom name is assigned.
- ◆ To assign a profile to the DEFAULT setting select it and press the joystick middle button.
- ◆ To assign an automatic profile to respond to your Meetings, select Meeting and press **Menu>Item>Edit Item**.
- ◆ To add a new scheduled profile change tap **Menu>Item>Add Timed Item**.

**Note:** Meeting triggers will override scheduled profile changes if they happen at the same time. Multiple meeting triggers override each other in descending order (i.e. 3>2>1).



## Scheduled Timed Profile Changes

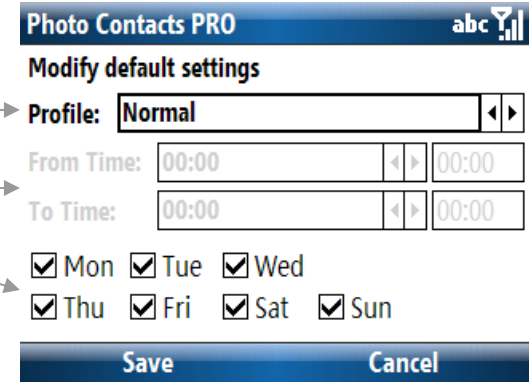
Select a profile to apply to the setting.

Select a time when the profile is active

Select days when setting is active

Select settings that apply to meetings (not shown).

Limit meeting scheduler to apply to meetings with assigned categories only (not shown). Separate multiple categories with comas.



Editing a timed setting

# Using Temporary Profiles

**Temporary Profiles (Temp Profiles)** are very useful when you need to quickly set your phone in a specific state for a limited period of time.

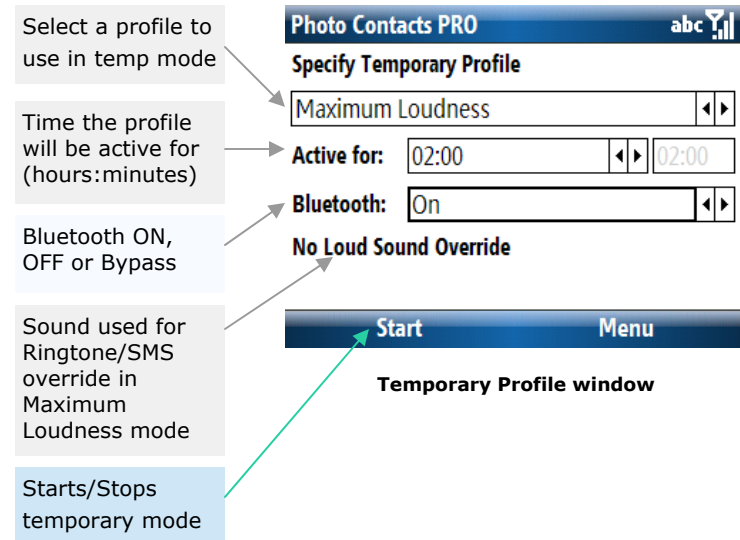
Any profile can be set to Temporary mode—in this mode, the profile will be active for a specified amount of time (example, for 2 hours). When the time expires Photo Contacts PRO will switch back to the profile/mode that was active before temporary profiles were activated.

Examples of Temporary profile use:

- ◆ You're going to a movie theater and want the phone to be silent for 2 hours and then automatically switch back to loud after the movie is over
- ◆ You're at a party and want the phone to be extremely loud for 3 hours and use the loudest ringtone that you have
- ◆ You're in a non scheduled meeting and wish to silence your phone for 1 hour

## Setting Temporary Mode

The easiest way to enable a temporary profile is to activate it from the Home Screen profile section. This will open the Temporary Profile Window. You can also do this via the **Menu>Profile** menu in Photo Contacts PRO.



## Temporary Profile Window

This window allows you to specify the temporary profile, the time the profile will be active for and sound overrides. You can choose between 2 fixed profiles or pick one of the regular profiles.

### Completely Silent

This is a fixed profile that will silence all sounds on the device

### Maximum Loudness

This is a fixed profile that sets the ring tone, the SMS tone and other sounds to maximum loudness. **Sound Override** allows you to set a sound that will be used for the ring tone and the sms tone when this profile is active (in case you wish to use a specific loud sound overriding all other ringtone/sms sound settings on the phone)

### Custom Profile

The list allows you to pick one of the regular profiles to be used in temporary mode.

### Bluetooth

Temporarily enable/disable Bluetooth on the phone to conserve battery power

**NOTE:** When temporary profiles are active automatic profiles and simple profiles are disabled until the time expires.

# Home Screen Enhancements (plug-in)

Photo Contacts PRO 5 enhances your mobile experience by showing useful information on your Home Screen. The Home Screen Plugin features 3 sections—Favorite contacts with pictures to enable easy dialing/SMS, Recent caller pictures/numbers, and a section showing the currently active regular, temporary or automatic profile. Any of the 3 sections can be enabled/disabled by going to **Menu>Options>Home Screen** in Photo Contacts PRO.

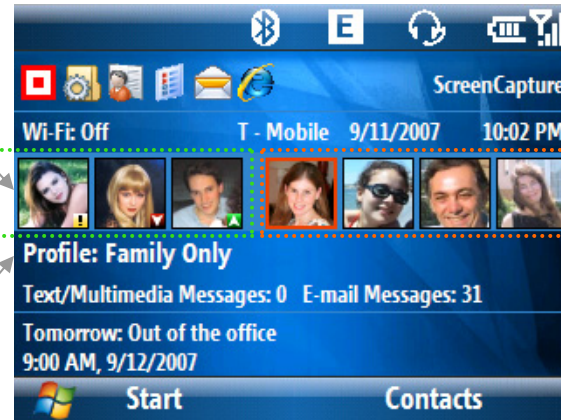
The home screen plugin supports 2 layouts—"Separate" where Recent Calls and Favorites are shown on 2 lines, or "Combined" where they use one line (best for landscape screens)

## Recent Calls/SMS

This section shows pictures of recent callers (up to 3 pictures in combined mode). Select a picture and press the joystick middle button to return the call or SMS the contact.

## Profile Section

Shows currently active profile and mode. Press the joystick middle button to select a new profile.



Home Screen Plugin—combined mode shown

## Favorite Pictures








Press left-right to cycle through favorite contact pictures. Press the joystick middle button to call or SMS the contact.

## Hints

If hints are enabled the profile section will show time/date of recent call for the picture selected in the Recent Calls section.

## Recent Calls/SMS Legend

A small icon will be shown on top of the caller picture to indicate:

-  Incoming Call
-  Outgoing Call
-  Missed Call
-  Incoming SMS Message
-  Auto-Rejected Call
-  Auto-Hanged Up Call
-  Auto Rejected+SMS Call

A small black box with a white number will appear on bottom left of the picture if more than one call is received from or made to the same contact.

## Assigning Favorite Contacts to the Home Screen

Open Photo Contacts PRO, select a contact and press **Menu>Contact>Favorites>Add**.

**TIP:** When a contact is designated as a favorite, the contact is assigned to the "Favorites\_PC" category. Now you can use the category filter (left-right joystick when in Page mode) to see all your favorites in Photo Contacts PRO. Contacts will also have this category assigned in Outlook on your desktop PC.

## Removing Favorite Contacts

Open Photo Contacts PRO, select a contact and press **Menu>Contact>Favorites>Remove**.

## Configuring the Home Screen

Photo Contacts PRO will prompt you to insert these sections into your current home screen layout during installation. To change the layout or switch from separate to combined mode press **Menu>Options>Home Screen**

## Reverting to your original layout

If you wish to revert to your regular layout press the **Restore Original Layout** button in **Menu>Options>Home Screen** in Photo Contacts PRO or go to **Start>Settings>Home Screen** on the phone and select a new layout.

**NOTE:** If Call Filtering Profiles are enabled in Photo Contacts PRO they will override regular profiles on the phone so it's best to leave the Profile section or the home screen plugin enabled.



## Photo Speed Dialing and Quick SMS

Photo Contacts PRO was designed to enable intelligent dialing of contacts via photograph on the Smartphone.



Press a digit to call

Lisa Green



(123)  
456-7890

(123)  
456-7890

(321)  
987-6543

Done

Send SMS

To dial a contact, select a photo and press the **TALK** button on the phone. You will then be prompted with a call dialog that lets you choose one of the 3 most commonly used phone numbers to dial:

- ▶ Press 1 to dial the contact's home phone number
- ▶ Press 2 to dial the contact's work number
- ▶ Press 3 to dial their mobile telephone number

**TIP:** Press the **Send SMS** button to send a quick or a pre-defined SMS message to a contact

If the contact has one of the above three phone numbers undefined in Outlook, the button will be disabled and its respective icon grey.

**NOTE:** You can also use the phone's joystick to select the number to call. Press left-right to select the number to call, press the ACTION or TALK button to call the number.

**NOTE:** Photo Contacts PRO will remember the last number dialed for each contact for easy re-dialing by pressing TALK-TALK.

## Sending email, SMS text messages and contact photographs via email

### Sending SMS, Email and MMS Messages

To send a message, select a contact, press **Menu>Send** and select whether you wish to send an Quick SMS, SMS/MMS or Email.

- If **Quick SMS** is selected you will be able to send a pre-defined or custom SMS message via the Photo Contacts PRO interface
- If **SMS/MMS** is selected, you will be prompted by the device to choose which transport you wish to use (SMS/MMS) via the standard phone interface. The phone number of the contact will be automatically inserted into the To: field of the new message.
- If **Email** is selected, you will be prompted to select an email account on your phone (Outlook or others). The email address of the contact is automatically inserted into the To: field of the new message.

**TIP:** In any view, press the **pound #** key to send a new message

### Sending Contact Photographs via Email or MMS

Contact photographs can be sent via MMS, Email or can be beamed via infrared. To send a photo of a contact, select a contact and press **Menu>Send>Photo**. You will be then prompted to choose the message transport (MMS or Email, if defined) you wish to use. Photo Contacts PRO

# Contact Sorting Options

Press **Menu>Sort** in Photo Contacts PRO to sort your contacts in four ways:

- By contact's First Name
- By contact's Last Name
- By the FileAs field in Outlook
- By Company Name

## Contact Search, Category and Text Filters



### TIP #1: Assigning and Creating Categories

Categories are a powerful way to group contacts. To assign an existing category, select a contact, press **Contact>Edit** and select a category. New categories can easily be added to the list by using Outlook on your desktop computer (in Outlook, select multiple contacts, press the right mouse button, select "Categories" and add a new category). Then synchronize contacts with the phone.

### Restricting visible contacts by CATEGORY—Category Filter

The integrated Category Filter lets you easily restrict the visible contacts by assigned category. **To toggle between categories of contacts, press the Left-Right joystick buttons while browsing contacts in Page Mode** (no selection outline around contact picture).

Alternatively, press **Menu>Sort>Set Filter** and select a category by pressing left-right in the spinner box. Press **Save** to activate the category filter, **Cancel** to exit.

### Intelligent Contact SEARCH—Text Filter

Simply start pressing number keys on your phone (or letter keys if your phone has a full keyboard) and the program will search for a matching contact based combinations of corresponding digits and letters. Press the BACK key to delete characters or cancel the search. Input characters of the First Name, Last Name, Company Name, Title, the File As field or any one of the Home/Work/Mobile telephone numbers.

Alternatively, press **Menu>Sort>Set Filter**, select the text filter box by pressing the joystick up button and type your search. Press **Save** to activate the text filter, **Cancel** to exit.

**TIP #2: Keyboards**—If your phone has an integrated keyboard just start typing and Photo Contacts PRO will search (filter) contacts. Press the BACK button to cancel filtering.

## Creating, Editing and Deleting Contacts

Photo Contacts PRO enables you to easily create, edit, duplicate and delete contacts on the Smartphone.

- To create a new contact, press Menu>Contact>New Edit>New.
- To edit an existing contact, select a contact and press Menu>Contact>New Edit>Edit.
- To duplicate a contact, select a contact and press Menu>Contact>New Edit>Duplicate.
- To delete a contact, select a contact and press Menu>Contact>New Edit>Remove.


**NOTE:** You can edit/enter all information except selecting a contact picture. To add a contact picture select a contact and press Menu>Contact>Photo>Assign (see page 7 for more info).

## Beaming Photos via Infrared (IR)

Photo Contacts PRO enables you to easily transfer a contact photo to another Smartphone or Pocket PC running Photo Contacts via Infrared (IR).


Before starting the beaming procedure, the sender and the receiver should align their infrared ports.

### **Sender:**

To transfer a photo to another phone, select the contact and enter Detail View. Now press the right-arrow joystick button until you select the  icon. Press the star "\*" key to start the infrared send process.

### **Receiver:**

WARNING: The received photo will overwrite the existing photo for the contact if one exists.

To receive a photo for a selected contact, first enter Detail View for that contact. Press the right-arrow joystick button until you select the  icon. Now press the "\*" key to start receiving the photo. To abort the send or receive process, press the "\*" key at any time.

# SMARTNAME™ (1/2)

## SmartName Overview

In addition to manually assigning photos to contacts on the Pocket PC and Smartphone devices, Photo Contacts and Photo Contacts PRO feature the PocketX Software Inc. exclusive SmartName™ method for automatically assigning photos to contacts. **This is as easy 1-2-3: 1. Name the picture, 2. Transfer the picture to the phone, 3. Run Photo Contacts**

With SmartName you can easily assign many photos to contacts on your regular computer, and you need to do this only once! If you ever hard-reset your Smartphone or your device loses its data and you need to re-install Photo Contacts, you can simply copy your contact photos to the device (or insert the memory card) and you're done! This eliminates the need to manually re-assign contacts to photos again.

## SmartName Instructions

Using your favorite photo editing program on your desktop or notebook computer you can crop, enhance and save a picture in **.jpg** format. We recommend using IrfanView for this task. (IrfanView is extremely easy to use [www.irfanview.com](http://www.irfanview.com))

Save all your contact photos in JPG format and into one folder on your PC. Limit the size of the photos to around 200x200 pixels for best performance.

Name the image file the same way the contact you're assigning the picture to is named in Outlook. The scheme should follow:

**<FirstName> <LastName>.jpg**

When naming the file, use a space between the first and last names. The image file name should match the contact name in Outlook.

Examples:

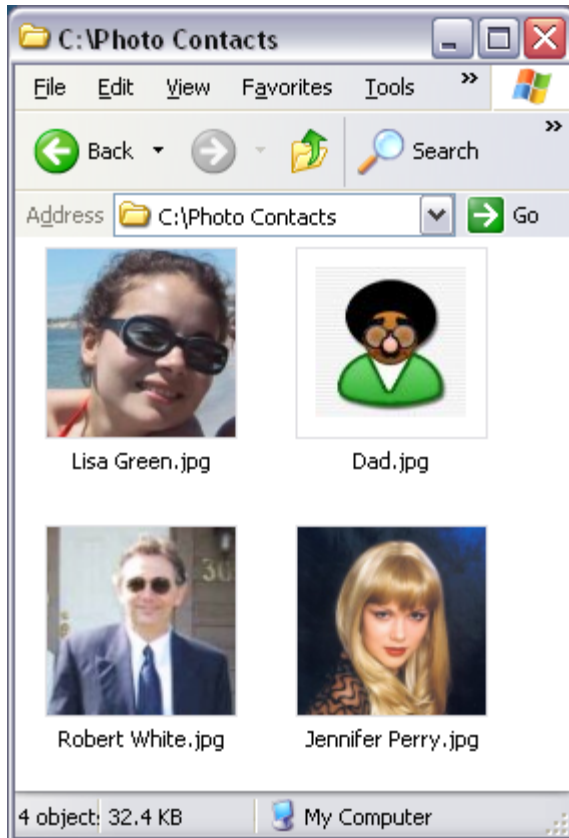
- \* If the contact name in Outlook is "Jane Doe" (Jane=FirstName, Doe=LastName) then name the image **"Jane Doe.jpg"**.
- \* If the contact name in Outlook only consists of one word, i.e. "Dad", then name the file **"Dad.jpg"**.
- \* If the contact only has a company name "Microsoft" defined then name the file **"Microsoft.jpg"**.

**IMPORTANT:** Please make sure you're not adding a double ".jpg" extension to your files in Windows since known file extensions like .jpg are hidden by default. In Windows Explorer, click on Tools/Folder Options/View and make sure that the "Hide extensions for known file types" is NOT checked. This will ensure that all your photos are named correctly before they are transferred onto the Pocket PC.

## SMARTNAME™ (2/2)

Once you have made a collection of photos you wish to associate to contacts, transfer them to the Smartphone.

\* **TIP: Keep all your contact photos in one folder on your desktop or notebook computer for easy copying and backup**



The photo folder on your computer

**NOTE:** If you have stored your photos on a memory card, go to **Menu>Options** in Photo Contacts to set the desired location.

### Transferring photos from the computer to the phone

1. Connect your Smartphone to your desktop or notebook computer and establish an Activesync connection
2. Click on the **Explore** button in Activesync to start browsing folders on your phone
3. Browse to the Photo Location folder on your Smartphone (defined in Menu>Options in Photo Contacts PRO). If you wish to store your contact photos in the device's internal memory, then go to (this is the default setting):

**\My Documents\Photo Contacts\** - on Windows Mobile 5/6 devices

**\Storage\My Documents\Photo Contacts\** - on Smartphone 2003 devices

**\IPSM\My Documents\Photo Contacts\** - on Smartphone 2002 devices

If you wish to store contact photos on a memory card then first create the folder on the memory card and then go to (this is inside the memory card):

**\My Documents\Photo Contacts\**

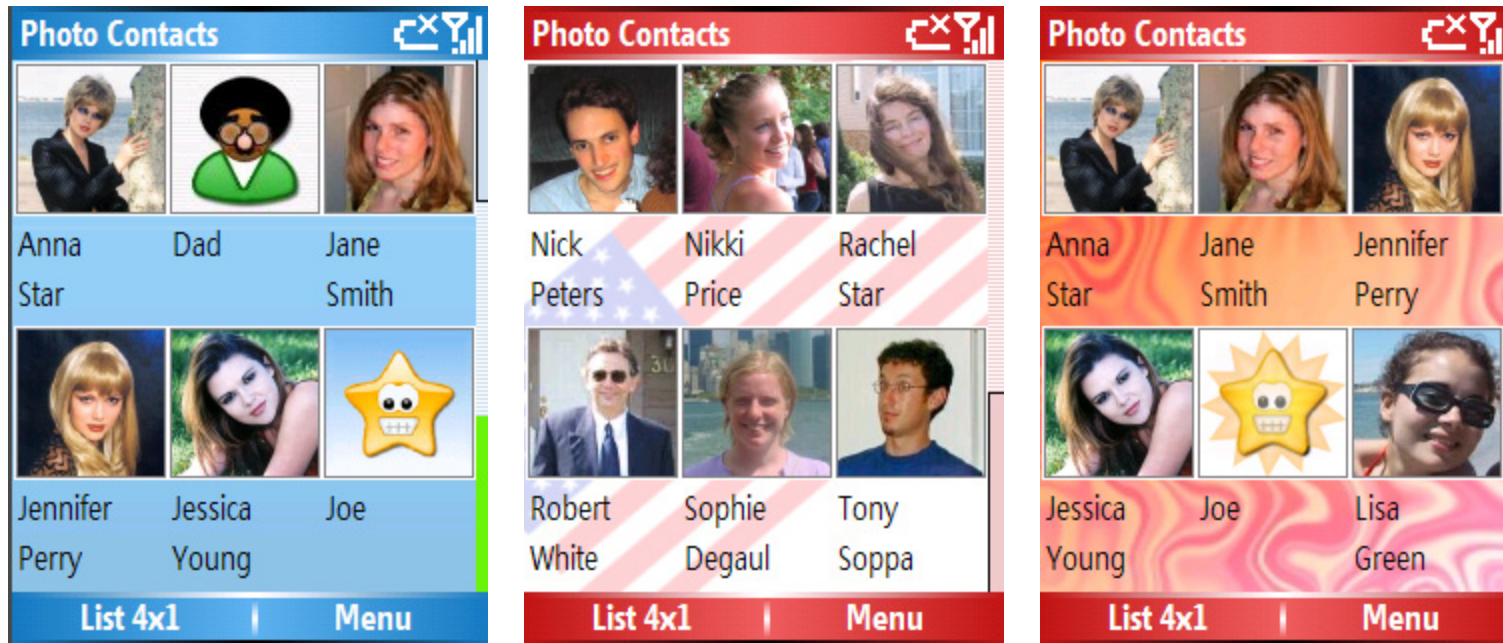
4. Copy all of your contact photos from the folder on your computer to the Photo Location folder on the phone defined above.
5. Now open Photo Contacts PRO on your phone and press the joystick Up-Down buttons to refresh the screen. Photo Contacts PRO associates photos automatically.



# Program Skins (Themes)

Photo Contacts PRO ships with pre-defined background and icon themes. The themes will change the way Photo Contacts PRO looks and feels with different background images and no-photo images.

To change the active theme go to **Menu>Options>General** in Photo Contacts PRO.



**NOTE:** A theme-based no-photo icon (shown when a contact does not have an assigned picture) will be displayed for every contact that has no photo defined.

If you desire to create your own themes, please see the Usage Tips for Photo Contacts PRO available on our website at [www.pocketX.net/pro-sm](http://www.pocketX.net/pro-sm)

# Program Options (General)

## Theme

The color theme (skin) used in the program. The program ships with multiple skins. Press the joystick middle button to browse themes.

## Photo Location

Photo Contacts PRO automatically stores all contact photographs in the "Photo Location".

By default if Internal Memory is selected, this is set to:

### **\My Documents\Photo Contacts\**

You can select Internal Memory or memory cards if any are plugged into your device. In addition, you can specify a custom photo folder if required by tapping in the box below the selection combo box.

- \* **NOTE:** If you use the SmartName method of assigning photos to contacts, then this is where you copy your photos to.
- \* If a contact photo is removed it will be saved in Photo Location"\Old" folder. This way you will be able to reuse your old photos if images were deleted by mistake. If required, you can easily delete the old photos using Activesync

## Import Photos from Outlook

Pressing this button will run a utility that can import pictures from Outlook (Windows Mobile 5 and Windows Mobile 6 devices only). You can choose to be prompted to overwrite existing pictures. **NOTE: All existing Photo Contacts pictures will be overwritten.**

## Export Photos to Outlook

Pressing on this button will enable you to export Photo Contacts pictures into the Outlook contact database. This is useful if you use SmartName or manual assign mode to assign pictures to contacts and wish to see these pictures in outlook as well.

## Hot Switch These Views

Checking any of the four view settings will enable them for switching using the left soft-button in the browsing views.

## Load Program on Startup

If this option is checked (default) Photo Contacts PRO will automatically launch itself a few seconds after a soft-reset (or power cycle) is performed.

## Show Splash Screen

Enables/disables the splash screen when Photo Contacts PRO first loads.

## Custom Default Images

By default a theme-based image is used in contact browsing views when no picture is assigned to a contact. If this option is checked, the DEFAULT picture assigned in the Photo Manager (Menu>Manage>Photos) will be used for contacts that do not have a picture assigned.

## Ring Notes on Photos

This setting enables display of a small icon over the right bottom corner of the contact photo. The icon shows a musical note if a custom ringtone is assigned to a contact, or a red cross, blue cross or V depending on call-filter settings.

## Override Contacts Btn

Checking this option will assign Photo Contacts PRO to the soft Contacts button on the Home Screen on the Smartphone. A new icon called "Contacts (Default)" is placed by Photo Contacts PRO in the START menu and can be used to call the regular "Contacts" program on the phone.

## No Close on Back button

If this option is checked pressing the Back button will not minimize the program. Use the Home button instead.

## Single Number Autodial

If a contact only has one phone number defined and this option is selected, when you press the TALK button calls are initiated without displaying the Call/Quick SMS window

# Program Options (Caller ID)

## **Enable Photo Caller ID**

This option will enable the Photo Caller ID engine and set it to a desired mode:

- **Simple** —uses a picture and text larger than if Photo Contacts was not running for Photo Caller ID
- **Use Themes** —displays a large picture of the caller with the theme background
- **Full Screen** — displays a large picture of the caller with large text
- **Business**—uses a medium sized picture and displays name and company information of the incoming caller with large text.
- **Large Text**—uses extra large text
- **Large Photo**—shows a photo filling the screen (for best results use SmartName to assign a photo matching your screen resolution (240x320 or 320x240))

Selecting the **PREVIEW** button will preview the Photo Caller ID mode.

## **Photo Save Resolution**

Photo Contacts PRO automatically re-samples contact pictures when they are assigned via the Photo>Assign function to this resolution setting. All contact photos are saved in the **Photo Location** folder.

**NOTE:** When using SmartName to assign photos to contacts the photo resolution should be around 200x200 pixels (digital camera photos cannot be generally used without re-sizing).

## **Enable Call Filter Profiles**

This option enables Call Filtering with Profiles. If enabled, Photo Contacts PRO also controls all the ring type and volume settings on the phone via its active Profile.

## **Enable Custom Ringtones**

If this option is checked, Photo Contacts PRO manages ringtones on your device.

## **Enable Continuous Ring**

Enabling this option will set your ringtones to play continuously during an incoming call without the default pause between rings.

## **Enable SMS Tones**

Checking this option enables distinctive SMS tones defined with the SMS Tone Manager (Menu>Manage>SMS Tones).

## **Enable SMS Photos**

Checking this option enables SMS picture ID and text message preview.

## **CallWait Reject not Hangup**

If this option is enabled (recommended) and a caller is set to be hanged-up by the call filter, if the incoming call is during call waiting, reject will be used—for compatibility with some devices.

## **Enable QuickSMS reply**

This option enables the reply option in the incoming SMS dialog when an SMS message is received.

## **Number Format**

This setting specifies phone number formatting for incoming caller id display. Enter # to designate one digit, separate numbers with dashes or parentheses.

Formatting examples:

#####  
###-####  
##-###

## **Remove Leading 0**

Checking this option enables removal of a leading zero if it appears in incoming caller id.

## **Remove Leading 1**

Checking this option enables removal of a leading one if it appears in incoming caller id.

# Program Options (Home Screen)

## **Show Favorites Section**

If this option is enabled a separate Favorite Pictures section will be shown on your phone's Home Screen—recommended for portrait screen devices.

## **Show Recent Calls Section**

If this option is enabled a separate Recent Caller Pictures section will be shown on your phone's Home Screen—recommended for portrait screen devices.

## **Show Combined Section**

If this option is enabled a combined Recent Call/Favorite Picture section is used (takes up only 1 line to save vertical space on the home screen). Up to 3 recent callers are shown—recommended for landscape screen devices.

## **Disable Hints Status Line**

If this option is unchecked, the Profile section of the home screen will change when a picture is selected in either the Favorite or the Recent calls section. In case of the Recent calls section, the name of the caller and time/date of the call is shown. In case of the Favorite section, the name of the contact is shown.

## **Disable Photos (show names)**

If this option is checked, text will be printed instead of the contact pictures.

## **Restore Original Layout button**

Pressing this button will disable the Home Screen plugin and revert to your original home screen layout (before Photo Contacts PRO was installed).

To re-enable the plugin sections simply check the corresponding options above and press SAVE.

**Note:** Photo Contacts PRO needs to always run in the background to manage Photo Caller ID, call filtering and ringtones. Make sure that it is not closed using a task manager on the phone.

**NOTE:** If Profiles are enabled in Photo Contacts PRO they will override regular profiles on the phone so it's best to leave the Profile section or the home screen plugin enabled (ie. You can uncheck the favorites/recent calls sections but the profile section will still be there).

# Obtaining Help and Additional Information

For most up-to-date answers to Frequently Asked Questions, Usage Tips and Installation Instructions visit our website at:

[www.pocketX.net/pro-sm](http://www.pocketX.net/pro-sm)

For product support, please fill out the support request form on our website at the address above.

To get general information about our products go to [www.pocketX.net](http://www.pocketX.net)

## Purchasing Photo Contacts **PRO**

To purchase Photo Contacts PRO please visit our website at: [www.pocketX.net/pro-sm](http://www.pocketX.net/pro-sm)

## We value your Comments and Suggestions for new features

Please let us know if you have any suggestions for improvements or new feature requests. To send your suggestion email [suggestions@pocketx.net](mailto:suggestions@pocketx.net)

**We appreciate your continued support!**

**Thank You!** - The PocketX Software Team