

MapView Manual

MapView in a Nutshell

Overview

MapView is the only solution to view large maps on your Palm handheld with high speed and in native resolution. Using bundled MapMaker application you can create on your desktop (Windows only) a specially formatted map file from any of your images and then view them on your Palm with MapView. No matter what the original image size is, the map file will open almost instantly and you can zoom it in to see all the details of the original image. Of course, the files displayed by the MapView do not have to be maps only – it is suitable to view any high resolution image.

To make maps viewing even more useful MapView supports GPS Bluetooth devices and allows mapping coordinates received from GPS device to the currently displayed map file so you can view your current position on the map. This feature is especially useful when maps for some areas are not available for your bundled GPS software – you can simply scan the paper map you have, convert it using MapMaker software on your desktop, copy to the Palm, bind the map to the GPS coordinates and use it to get your current location.

Also MapView supports JPEG and GIF images viewing, so it can also be a default viewer for your regular images.

Minimum requirements for your handheld are: Palm OS 5 or greater, 450K free memory, color screen.

Installation

Download MapView **zip** or **sit** installation archive.

Unpack the archive and install program file (mapview.prc) onto your Palm handheld using your palm installation tool, for example HotSync.

Making maps and getting them to a handheld

Use MapMaker application for Windows to make maps. For details see MapMaker Tutorial.

You can copy maps from desktop computer to a handheld's expansion card (see Getting images to a handheld) or to the internal memory (using Palm Quick Install and **Handheld** as the destination).

Getting images to a handheld

Maps can be copied either to your handheld's expansion card or internal memory. Map files are comparatively large, so it is recommended to use expansion cards to store them due to the low internal memory size of the most Palm handhelds.

Expansion card is a small flash-memory card, which is inserted into the handheld's expansion slot. It can be Secure Digital Card, Multimedia Card or other - it depends on handheld's model.

- **Using Palm Quick Install**

The easiest way to copy images from the desktop computer to the handheld's expansion card is using synchronization software, like Palm Desktop or Palm Quick Install (this software is shipped with handheld itself on special Installation CD-ROM disk).

With Palm Quick Install you have just to drag&drop your images to Quick Install's window. Do not forget to choose correct destination: not **Handheld**, but **Expansion Card**.

After this put your handheld into the cradle and push the **HotSync** button. All images will be copied to the Expansion Card.

- **Using memory card reader**

Card reader is a small device, which can be connected to a desktop computer (or laptop) via USB or other communication cable. You can put your memory card into this device. For the operating system (Windows, for example) the card will be displayed as Removable Drive.

All you have to do is to copy your images onto this drive, then take the memory card out of the card reader and put it into your handheld's expansion slot. After this you can view your images on the handheld using MapView.

- **Card-mounting software**

If you neither have a flash card reader device, nor want to use standard synchronization software, you can go other way. There are few programs, which make it possible to mount the expansion card of the handheld directly to a desktop computer. In this case handheld's expansion card is displayed as new Removable Drive of your desktop computer. Afterwards you can copy your images on this disk the same way you do with a memory card reader.

For example, you can use Softick Card Export II to access SD/MMC card inserted into Palm OS device as a logical disk on the Windows desktop. Card Export II emulates USB Mass Storage device (like USB card reader, USB flash drives etc) and doesn't require any additional drivers on modern desktop systems. With Card Export II you can transfer Palm OS applications, images, mp3 files to the card or just use the memory card as a floppy for any data. After connecting the card is accessible as another removable disk in Windows Explorer.

Working with MapView

MapView provides a desktop-like interface to browse and view maps and regular images.

- **Viewing maps and regular images**

To view a map, navigate to it in the file view and tap on Open Image icon (for details see MapView Reference: Open Image) or by double-tapping on it (you can assign open action to single, double or long tap, for details see File List View Options in MapView Reference).

With MapView you can zoom and scroll images and maps. For details see Common Features in MapView Reference.

For GPS device owners MapView provides additional feature for maps - viewing current position. For details see Map Features in MapView Reference.

Also you can set different viewing settings like auto zoom, background, etc. in Image View Options dialog window. For details see Image View Options in MapView Reference.

- **Browsing images and maps**

With MapView you can rename or remove your image and map files, copy or move them to any folder including internal memory, create a new folder on the memory card. For details see Toolbar in MapView Reference.

Also you can set the tap settings to explore files and folders easily using File List Options dialog window. For details see MapView Reference, chapter File List View Options.

Additionally MapView provides multiselect option to perform with a couple of files simultaneously. For details see chapters File List and Multiselect in MapView Reference.

MapView has different view modes of browsing files and folders, including thumbnails (for details see MapView Reference, chapter File List). Also you can set the font for each of these modes (for details see MapView Reference, chapter Font Options).

- **Global Positioning**

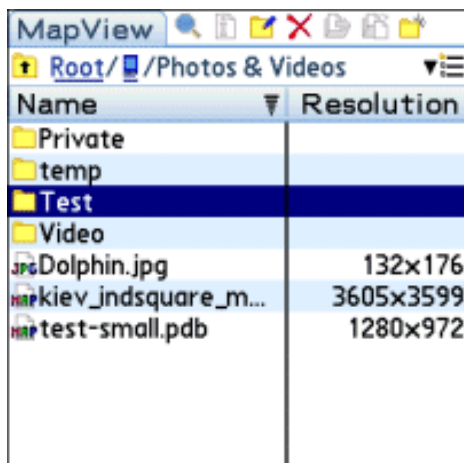
If you have a GPS device, MapView provides additional feature for maps - viewing current position. For details see Map Features in MapView Reference.

- **Image security**

MapView supports private images and global security options. For details see Security Options in MapView Reference.

MapView Reference

File List View



| Name | Resolution |
|---------------------|------------|
| Private | |
| temp | |
| Test | |
| Video | |
| Dolphin.jpg | 132x176 |
| kiev_indsquare_m... | 3605x3599 |
| test-small.pdb | 1280x972 |

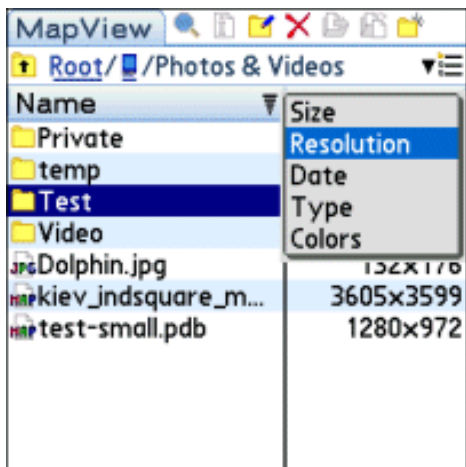
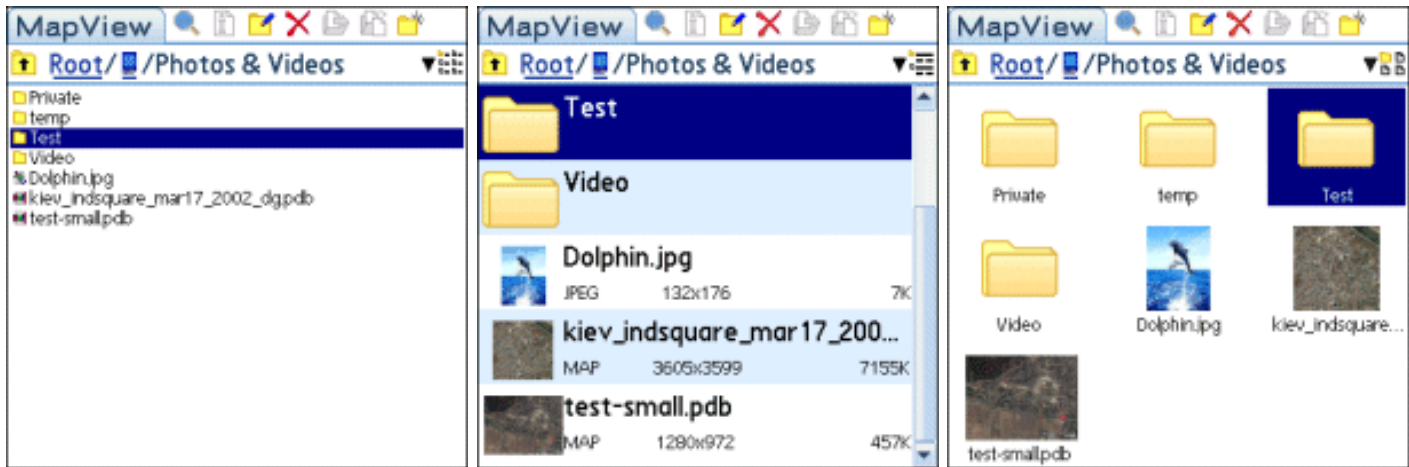
First thing you see when running MapView is File List View. Here you can browse your images on expansion card or internal memory.

File List View consists of File List, Toolbar, Path Indicator and Mode Selector.

Also there is the program header on top left corner of the screen. You can open a menu by clicking on the header.

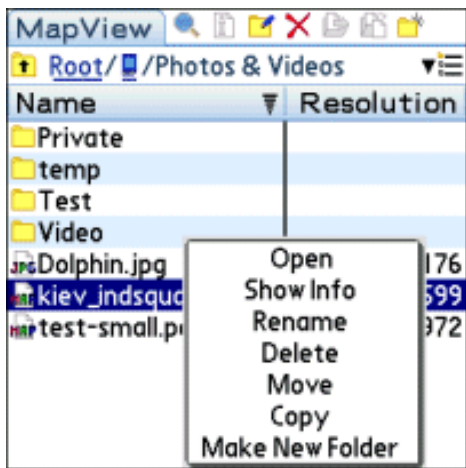
- **File List**

File List has four view modes: table mode (see picture above), list mode, details mode and thumbnail mode. You can select one of them using Mode Selector.

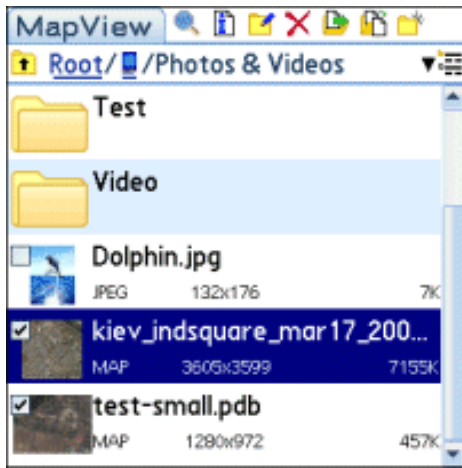


In table mode file list columns can be sorted — you can sort files either by name (left column) or by the value in right column, which can be size, resolution, date, type or colors. *Tap* once on the column header to change sorting order (ascending or descending), or to change sorting column.

To choose right column contents *long tap* (push your stylus and hold it for a while) on its header or use File List Options dialog window that can be accessed by Options->File List menu item. For details see File List Options.



Just *long tap* on the file or folder name in the list and you get a drop-down list of all the actions, accessible at the moment. You can assign another tap to open that list using File List Options dialog window.



Also you can operate with a couple of items simultaneously using multiselect option - just check wanted items.

Multiselect option can be turned on/off by selecting Options->Multiselect menu item.

• Toolbar

All the actions available for selected file or folder are shown on the toolbar.



All the icons are accessible regardless of File List view mode.

○ Open

This icon is active only if you have selected an item.

When you select a folder and tap on *Open*, the folder opens. When you select an image (or map) file and tap on *Open*, you see the picture (or map).


Also these actions can be performed by tapping on the file or folder name in File List. You can tune it in File List Options dialog window (menu *Options->File List*).

○ Image Info

This icon is active only if you have selected a map or image file.

Image information gives a clue about different file and image parameters. It has a different view for images (see the left picture below) and maps (see the two right picture below).

Map info shows binding info and provides the way to open the map in Binding Mode - just tap on "... " button. For maps with binding (see the right picture below) you can delete the map binding from image info (for binding details see Binding Mode).

Attach a note to an image using *Note* button and easily view it by tapping on  icon next to the file name in File List.

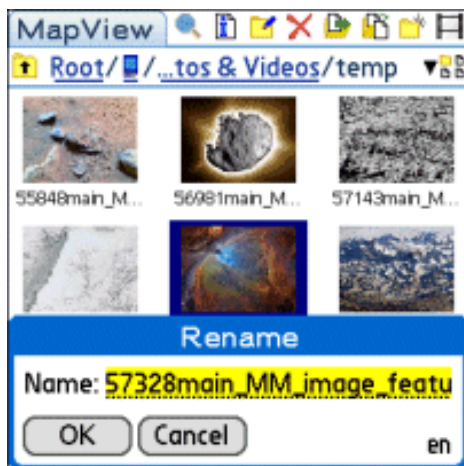
Also here you can check image as private. Security options (show, mask or hide private images) can be set in Change Security form (menu *Options->Security*).



-  Rename

This icon is active only if you have selected an item.

Use this command when you want to rename map file or folder.



-  Delete

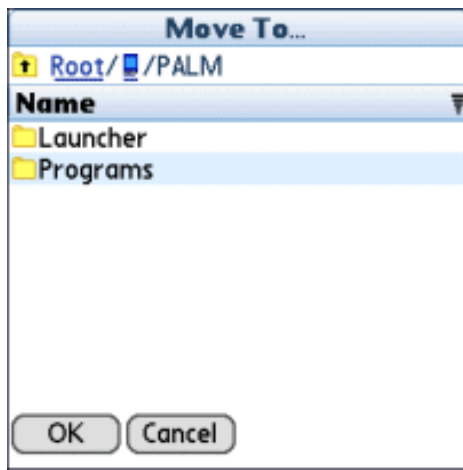
This icon is active only if you have selected an item.

Use this command when you want to delete map file or folder.

-  Move

This icon is active only if you have selected a map or image file.

Use this command when you want to move map file to another location. You can't move it to the same location.



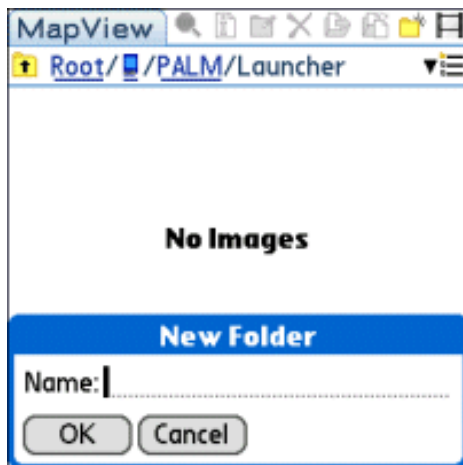
-  Copy

This icon is active only if you have selected a map or image file.

Use this command when you want to copy map file to another location. You can't copy it to the same location.

-  New Folder

You can create a new folder, if you need it to arrange you map files. Tap on this icon to bring the new folder creation dialog, enter a new folder name and tap OK.



● Path Indicator


Path Indicator is located below the program header.





 Root/ /Photos & Videos

It includes *up* icon and the path to the open folder.

By clicking on *up* icon -  - you can go one folder up.


- **Mode Selector**

Mode Selector -  - allows you to select File List view mode. You can see it on the top right corner of File List View, right below Toolbar.

File List has four view modes and Mode Selector has icons for each of them: table mode () , list mode () , details mode () and thumbnail mode () .

Menu

There are two ways to get to the program's menu: first way is to tap the program header, second is to tap Menu button

 (it can be a hardware button or a button on your graffiti area – it depends on your device's model).

- **Image**

Image menu includes only one operation with images (or maps) and you have to select an image (or map) before using it.

- **Open**

Use it to view selected image (or map). Also it opens selected folder.

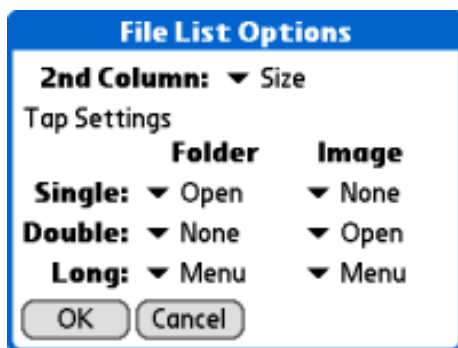
- **Options**

Options menu represents various parameters of MapView.

- **Multiselect**

Select it to turn on/off multiselect option. Multiselect option allows you to operate with a couple of images and maps simultaneously (for details see File List).

- **File List Options**

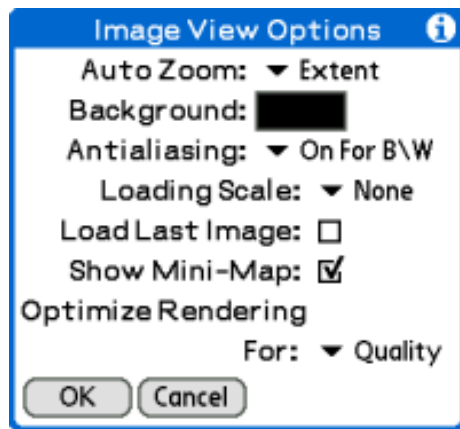


Here you can set displayed value of the second File List column and change stylus tap settings.

File List second column can show image size, resolution, date, type or colors number.

You can assign *Open* and *Menu* (opens the context menu) commands to single, double or long tap. You can do it separately for files and folders.

- **Image View Options**



These are the options of image view.

They include:

- Auto Zoom

When Auto Zoom value is set to *Extent* it means, that when you open an image (or map) it will be zoomed to fit the screen. If an image is smaller than the screen, it is going to be enlarged. If an image is larger than the screen, it will be shrunk.

Also Auto Zoom value can be *None* (no zoom), *W. Extent* (width extent), *H. Extent* (height extent) or exact zoom value: *x0.25*, *x0.5*, *x2*.

- Background

Defines Image View background color.

- Antialiasing

Enables or disables antialiasing of image zooming. *Off* disables antialiasing, *On For B\W* enables it only for black and white images, *On For All* enables it for all images.

This option doesn't affect maps.

- Loading Scale

Defines the scale factor that will be applied when loading images. This option doesn't affect maps.

Select *Extent* to improve performance. But in this way zooming the picture will not give you more details.

- Load Last Image

Check it to open the last image (or map) on program startup.

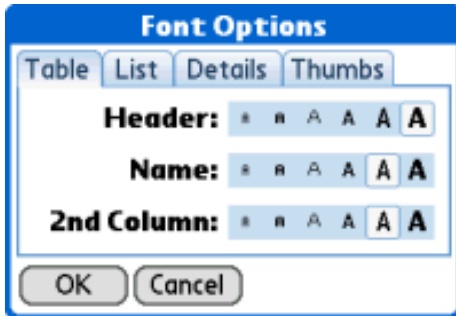
- Show Mini-Map

Check it to show mini-map window in Image View.

- Optimize Rendering For

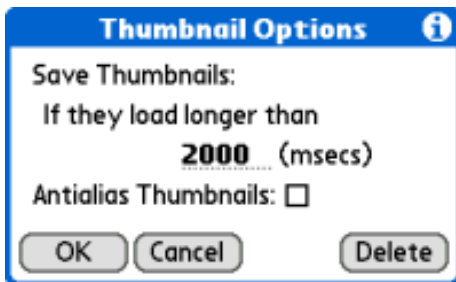
This option affects maps only. It defines the type of map rendering: with the best *Quality* or the best *Speed*.

- Font Options



Here you can set font size for each of the File List view modes.

- Thumbnail Options



Thumbnails are saved if they load longer than some user defined time. Here you can change this time limit.

You can also enable or disable antialiasing for thumbnails. When antialiasing is turned on the thumbnails look much better, however the displaying time will increase.

Delete button deletes all saved thumbnails.

- GPS Options



Here you can set GPS device for receiving current coordinates from satellites. For details see Map Features.

Check *Show Precision Warnings* to receive warnings when GPS info hasn't enough precision (during point addition or position defining). For details see Binding Mode.

- Security Options



Sets standard privacy record option.

Image View





In Image View you can see the actual map image. You can zoom and pan image, bind the map to the GPS coordinates and view your current position on the map (see Map Features for details).

- **Common Features**

The common image view features are available for both images and maps.

You can scroll the image by dragging it, by tapping on mini-map (the window on the right bottom of the screen) or using hard buttons (5-Way Navigator or Jog Dial).

You can zoom the image using  and  buttons.



button closes the image.


- **Map Features**

These features are available for maps only. You can use them only if GPS device is selected (see GPS Options).


Maps can be viewed in two modes: View Mode and Binding Mode.

- **View Mode**

To open map in View Mode just tap on its name in File List (see File List).

Here you can find some additional features. To access them tap on  icon. Features list includes:

- Show Current Position

If map binding is OK this option shows current position on the map using  icon. For details see Binding Mode.

- Show GPS Info

Shows GPS Info: longitude, latitude, number of visible satellites, etc.

- Switch To Binding Mode


Switches to Binding Mode.


- Close File

Closes the map file.

- **Binding Mode**

You can open map in Binding Mode by tapping on "... " button in Image Info dialog window (see Image Info) or by selecting Switch To Binding Mode while browsing map in View Mode.

In Binding Mode you can find the features that allow you to bind the map with real coordinates. For this purpose you have to add two or three current position points to the map. Added point is shown as  icon.

To access binding features tap on  icon. Features list includes:

- Show GPS Info

Shows GPS Info: longitude, latitude, number of accessible satellites, etc.

- Add Point

Adds current position point to the map binding.

- Delete Point

Deletes point from the map binding.

- Delete Binding

Deletes the map binding.

- Switch To View Mode

Switches to View Mode.

- Close File

Closes the file.

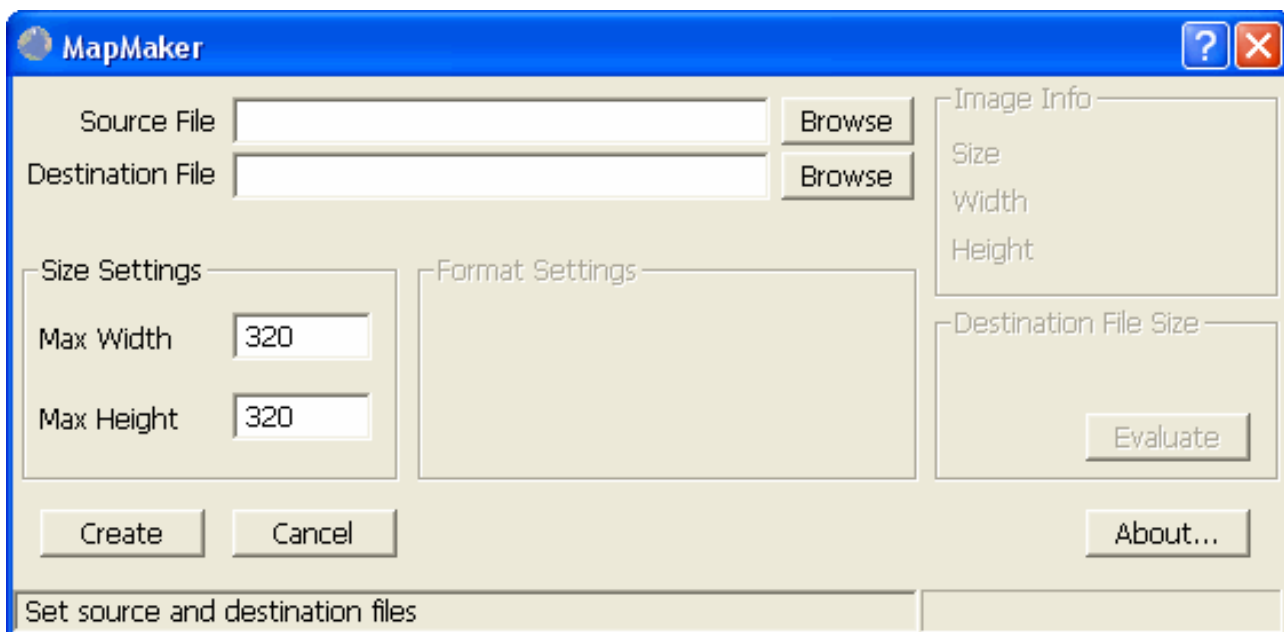
MapMaker Tutorial

- **Overview**

MapMaker is a desktop application (Windows only) that allows you to create map files from JPEG or GIF images. MapMaker does not require installation; you can simply unzip it from the distribution archive and launch the MapMaker executable.

- **Starting MapMaker**

To start MapMaker you should run MapMaker.exe.

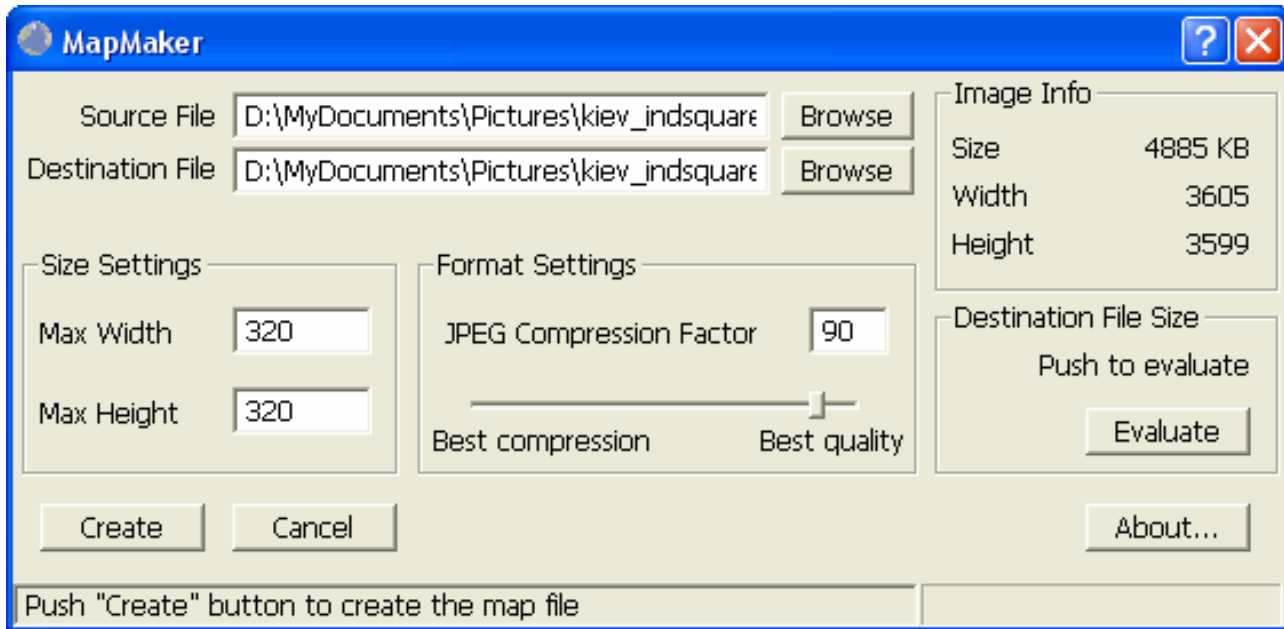


- **Setting source and destination file names**

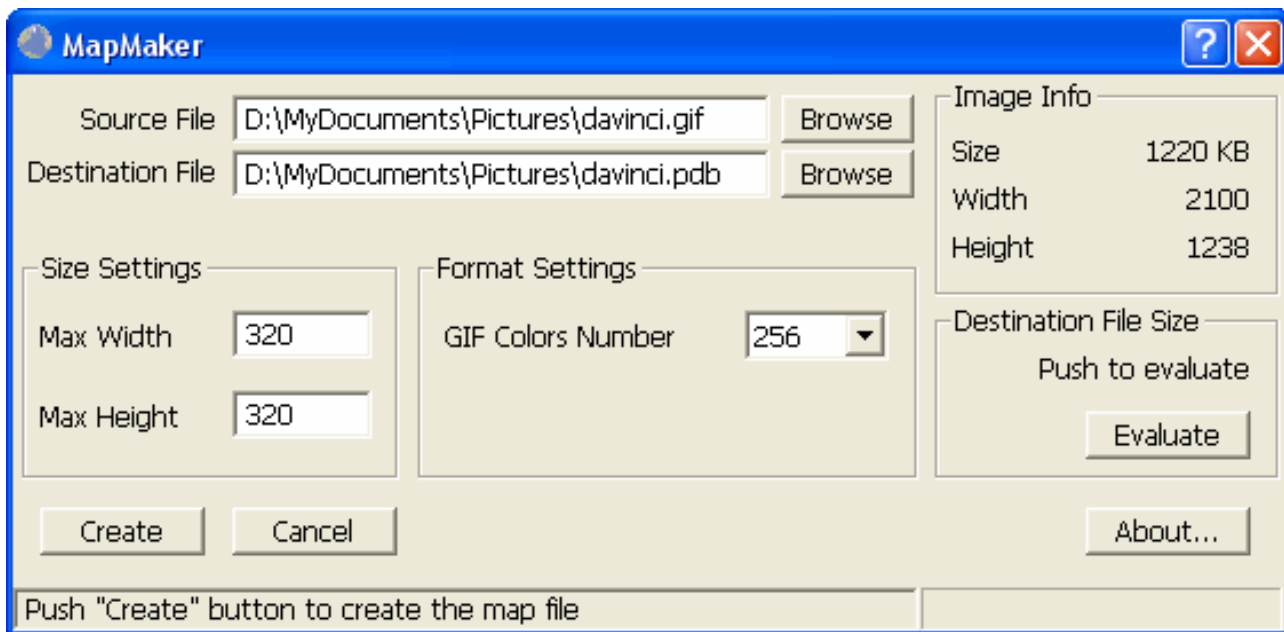
You can enter source file name either manually or select it in the file list using *Browse* button. When you select a source file then destination file name appears automatically. If you want you can change it.

- **Format settings**

If the converted image is in the JPEG format, you can set JPEG Compression Factor to be used in the map file. Higher value of JPEG Compression Factor leads to better quality and worse compression of the map and otherwise, lower value of JPEG Compression Factor leads to worse quality and better compression of the map.



If the source file is in the GIF format, you can set the number of colors used in the resulting map file. More colors mean larger size, but better image quality.



Max Width and Max Height fields show the image chunks size. It is recommended to set these values equal to your device's resolution. Larger values will make the map file size smaller, but displaying speed will decrease.

- **Evaluating destination file size**

To evaluate resulting map size push *Evaluate* button. It can take some time for MapMaker to evaluate size of the large maps.

- **Creating map**

After setting source and destination file names and format settings you can finally create map file by pushing

Create button.