

# TealWheel User's Manual



Program Version 1.00  
Last Updated: April 24, 2009

## Table of Contents

|  |           |
|--|-----------|
| <b>Introduction .....</b>                        | <b>1</b>  |
| <i>Description.....</i>                          | <i>1</i>  |
| <i>Installing .....</i>                          | <i>2</i>  |
| Windows Install .....                            | 2         |
| Manual Install.....                              | 2         |
| <i>Terminology .....</i>                         | <i>2</i>  |
| <b>Chapter 1 – Quick Start .....</b>             | <b>3</b>  |
| <i>Introduction .....</i>                        | <i>3</i>  |
| The Icon Wheel .....                             | 3         |
| The Configuration Screen .....                   | 3         |
| <b>Chapter 2 – The Icon Wheel .....</b>          | <b>4</b>  |
| <i>Overview .....</i>                            | <i>4</i>  |
| Icons .....                                      | 4         |
| Central Hub.....                                 | 4         |
| Home Icon.....                                   | 4         |
| <i>Navigation (5-way).....</i>                   | <i>5</i>  |
| <i>Navigation (stylus).....</i>                  | <i>5</i>  |
| <b>Chapter 3 – The Configuration Screen.....</b> | <b>6</b>  |
| <i>Mapping Icons .....</i>                       | <i>6</i>  |
| None .....                                       | 6         |
| History .....                                    | 6         |
| Applications .....                               | 7         |
| Function – Brightness .....                      | 7         |
| Function – Find .....                            | 7         |
| Function – Home.....                             | 7         |
| Function – Lock and Off.....                     | 7         |
| Function – Power Off .....                       | 7         |
| Function – Toggle Radio .....                    | 7         |
| Function – Cut.....                              | 7         |
| Function – Copy .....                            | 8         |
| Function – Paste .....                           | 8         |
| Function – Undo.....                             | 8         |
| Navigation – Wheel List .....                    | 8         |
| Navigation – Previous Wheel.....                 | 8         |
| Navigation – Next Wheel.....                     | 8         |
| Navigation – Wheel A-E .....                     | 8         |
| <b>Chapter 4 – Settings and Options .....</b>    | <b>9</b>  |
| <i>Activation Prefs .....</i>                    | <i>9</i>  |
| Hardware Button / Button Hold .....              | 9         |
| Other Home Button.....                           | 9         |
| Opt + Hard Button .....                          | 9         |
| Favorites/ Voice .....                           | 9         |
| Aux Button / Hold .....                          | 9         |
| <i>Navigation Prefs.....</i>                     | <i>10</i> |
| When trying to move beyond the wheel edge .....  | 10        |

|  |           |
|--|-----------|
| Initial highlight position .....           | 10        |
| <i>History Prefs</i> .....                 | 10        |
| History icons start at .....               | 10        |
| Initial highlight position .....           | 10        |
| <i>Special Prefs</i> .....                 | 11        |
| Pass through activation app buttons .....  | 11        |
| Show preview panel .....                   | 11        |
| Show preview panel in front .....          | 11        |
| Show app name if no preview .....          | 11        |
| Show background panel .....                | 11        |
| Show icon containers .....                 | 11        |
| Save rotation between sessions .....       | 11        |
| Save rotation between wheel changes .....  | 11        |
| <i>Wheel Prefs</i> .....                   | 12        |
| Open with... ..                            | 12        |
| Wheel Visibility / Names .....             | 12        |
| <i>Activation Apps List</i> .....          | 12        |
| <i>Card App Folders</i> .....              | 12        |
| <b>Appendix A – Revision History</b> ..... | <b>13</b> |
| <b>Appendix B – Contact Info</b> .....     | <b>13</b> |
| <b>Appendix C – Registering</b> .....      | <b>13</b> |
| <b>Appendix D – Products</b> .....         | <b>14</b> |
| <b>Appendix E – Legal Notice</b> .....     | <b>17</b> |

# Introduction

## ***Description***

Thank you for trying TealWheel.

## ***Contents***

This archive contains the following files:

Program files:

TEALWHL.PRC  
TPSETUP.EXE

The TealWheel program file  
Windows easy-installer

Document files:

WHLDOC.PDF  
WHLDOC.HTM  
WHLDOC.PRC  
REGISTER.HTM  
REGISTER.TXT

This document in Adobe Acrobat (PDF) format  
This document in HTML format (sans images)  
This document in TealDoc format  
TealPoint Registration form in HTML format  
TealPoint Registration form in text format

# Installing

## Windows Install

Under Windows, run TPSETUP.EXE and follow the on-screen prompts

## Manual Install



Use the Palm Install Tool (“Quick Install”) to install the file:

- **TEALWHL.PRC**

The Palm Install Tool comes installed on your desktop computer as part of your original software package, and is accessible from the Palm Desktop program as an icon on the left hand side.

This document also comes as a Palm document file **WHLDOC.PRC**, which you can optionally install and view with our document reader TealDoc.

## Terminology

This manual uses the following terminology:

### *buttons*

Rounded, rectangular areas on the Palm display screen that you can tap on with a stylus.

### *hardware buttons*

Physical pushbuttons on you device/phone case that you can depress with your finger

### *application buttons*

The row of two or four hardware buttons that are typically configured to launch frequently used applications

### *5-way control*

The directional rocker switch located below the device display

### *silkscreen buttons*

Buttons located in a physical or virtual graffiti text entry area, if present

### *non-volatile memory*

A memory technology that does not lose data even after complete power loss. In modern PalmOS handhelds, NAND flash memory chips are used.

### *NVFS*

Palm’s non-volatile file system, the part of PalmOS which uses a fixed block of normal RAM memory to speed up access to data stored in NAND flash memory.

### *DBCACHE*

The fixed block of normal RAM memory used by NVFS to speed up file access.

# Chapter 1 – Quick Start

## Introduction

Taking pop-up launchers like the TealOS wave launcher one step further, TealWheel gives you instant access to your applications. Sporting a powerful yet intuitive interface, TealWheel can pop up while you're still inside another application, providing access to numerous applications, preview images, and even useful functions like copy, paste, and global find.

### The Icon Wheel

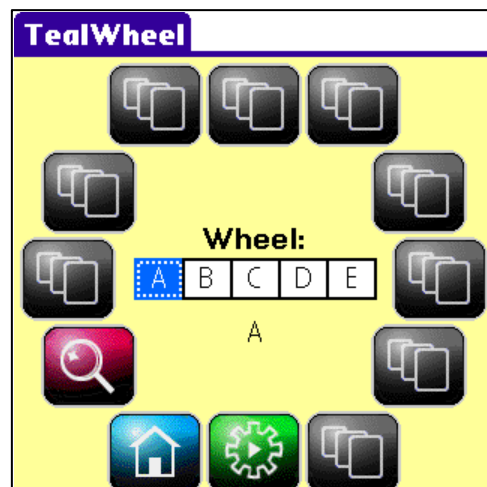
The main TealWheel interface consists of a circular wheel of 12 icons, each of which can be mapped to an application, function, or navigation command. The wheel will open from within any application at the press of a button.

You can create up to five independent named wheels, and switch between them to find the app you want.



### The Configuration Screen

To select applications or commands for each wheel icon, run the main TealWheel program to bring up the *Configuration Screen*. Select any icon to choose a new function for that icon.



## Chapter 2 – The Icon Wheel

When you run the main TealWheel program for the first time, TealWheel enables *Icon Wheel*, and maps it to open by default when you press the *Home* button on your device.



### Overview

#### Icons

The *Icon Wheel* consists of twelve icons arranged in a circle. Each icon represents a launchable application or special command.

#### Central Hub

In the middle of the circle, the *central hub* will display a preview image of a selected application, or if no preview is available, it will display the current time, wheel name, and the name of a selected app for function.

#### Home Icon

In the upper left corner of the wheel, a small *home icon* is displayed. Tapping on this icon opens the standard application launcher. The *home icon* is particularly useful in case you map TealWheel to your device home button and have not mapped the launcher app to any icons in the *Icon Wheel*.



## Navigation (5-way)

By default, the *central hub* is highlighted when you first open the *Icon Wheel*. To change the selection, use the 5-way navigator to move the current selection up, down, left or right. This will highlight the four corresponding “compass” icons in the wheel.

Once an icon is highlighted, you can move the highlight inward to move back to the center hub, or tangential to the wheel to rotate it to the next icon. For instance, if you highlight the leftmost icon, moving down will rotate the wheel clockwise, and moving up will rotate it counter-clockwise. Select the icon with the 5-way select button to execute the mapped function or open the corresponding app.

A special function can be executed if you move the highlight outwards from the wheel edge. Each of the four compass directions can be programmed to close the wheel, to change to another wheel, or to rotate the wheel in either direction. By default, moving right from the rightmost (3-o'clock) wheel switches to the next wheel, while moving left from the leftmost (9-o'clock) icon switches to the previous wheel in the wheel list. The specific command executed can be adjusted in the *Navigation Prefs* screen described in the *Settings and Options* chapter.

## Navigation (stylus)

Alternatively, you can operate the Icon Wheel with a finger or stylus. Tap on icon to activate it, or use a circular gesture to rotate the wheel in either direction.

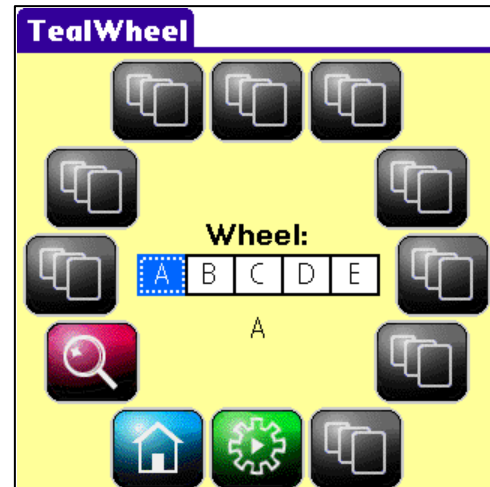
When the wheel is rotated, the icon highlight moves so that an icon in roughly the same location on the wheel (e.g. “9-o'clock” or “12-o'clock”, etc) is kept highlighted. This lets you preview the contents of different icons while you rotate the wheel.

To easily change wheels, tap on either of two arrows that appear on the *central hub*. These move to the previous or next wheel. Alternatively, you can tap on the current wheel name to bring up the popup wheel list.



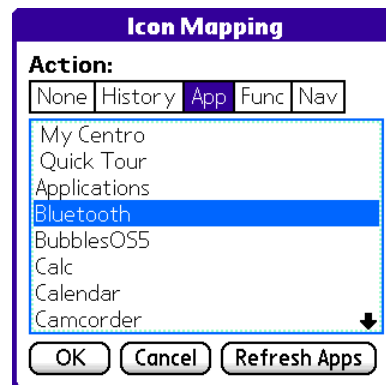
## Chapter 3 – The Configuration Screen

The configuration screen opens whenever you run the main TealWheel program. On it, twelve buttons represent each of the 12 icons in the *Icon Wheel*, and five boxes labeled “A” through “E” represent each of five separate wheel configurations.



### Mapping Icons

To choose an action for an icon, select its button to bring up the *Icon Mapping* screen. You can choose from the following mappings:



#### None

The icon is left blank and performs no action when selected.



#### History

The icon is automatically mapped to one of the 12 most recently run applications. A preview image is stored for each application in the history list.

By default, history icons are filled in clockwise order starting with the bottom-most (6-o'clock) icon, so if the 6-o'clock icon will contain the last app run if mapped to the History action, 7-o'clock will contain the last app before that, etc.





## Applications

Icons can be mapped to a specific application in main memory or on an SD card. For apps on a card, a number in parentheses--indicating the volume number where the app resides--follows the app name. On most devices, apps on an external card are followed by "(2)", and apps on an internal storage (USB) volume are followed by "(1)".

### Function – Brightness

Brings up the PalmOS brightness adjustment slider



### Function – Find

Initiates a PalmOS Global Find operation.



### Function – Home

Launches the full system launcher application



### Function – Lock and Off

Locks the handheld and turns it off



### Function – Power Off

Turns off the handheld



### Function – Toggle Radio

Toggles a Palm Treo or Centro radio on or off



### Function – Cut

Performs a PalmOS cut operation on an active text field



**Function – Copy**

Performs a PalmOS copy operation on an active text field

**Function – Paste**

Performs a PalmOS paste operation on an active text field

**Function – Undo**

Performs a PalmOS undo operation on an active text field

**Navigation – Wheel List**

Brings up popup list to select a new wheel by name

**Navigation – Previous Wheel**

Selects the previous wheel (by letter)

**Navigation – Next Wheel**

Selects the next wheel (by letter)

**Navigation – Wheel A-E**

Selects a specific wheel by letter



## Chapter 4 – Settings and Options

Adjust preferences in TealWheel in the following menus:

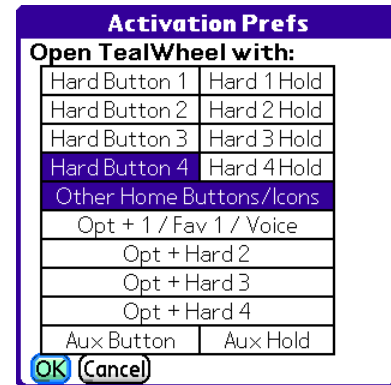
### **Activation Prefs**

Use the Activation Prefs screen to set which button presses are used to open the *Icon Wheel*:

#### **Hardware Button / Button Hold**

Most devices have four hardware application buttons that are mapped to applications. Use this option to map a press of the button or a long press (hold) to TealWheel instead.

**NOTE:** On the Treo 650, Hardware buttons 1 and 4 are respectively used for dialing and power buttons. On the Palm Centro, the four hardware buttons are arranged in a “U” order with (1) in the upper left and (4) in the upper right. Button 4 is mapped by default as a home button. Devices like the LifeDrive and Palm TX without a separate dedicated home button typically use Hardware button 1 or 4 as a home button.



The screenshot shows the 'Activation Prefs' screen with a purple header. Below the header is a table with two columns. The first column lists various button presses, and the second column lists the corresponding actions. The table is as follows:

| Open TealWheel with:     |             |
|--------------------------|-------------|
| Hard Button 1            | Hard 1 Hold |
| Hard Button 2            | Hard 2 Hold |
| Hard Button 3            | Hard 3 Hold |
| Hard Button 4            | Hard 4 Hold |
| Other Home Buttons/Icons |             |
| Opt + 1 / Fav 1 / Voice  |             |
| Opt + Hard 2             |             |
| Opt + Hard 3             |             |
| Opt + Hard 4             |             |
| Aux Button               | Aux Hold    |

At the bottom of the screen are two buttons: 'OK' and 'Cancel'.

#### **Other Home Button**

Use this option to map a press of a dedicated home button or software home icon to TealWheel. Devices with dedicated home buttons also have four separate application buttons.

#### **Opt + Hard Button**

On a Palm Centro or Treo, use this option to map TealWheel to a press of a hardware button while holding down the option shift.

#### **Favorites/ Voice**

On other devices, a *Favorites* button (Tungsten E) or Voice Dial button (Tungsten T) can be mapped to TealWheel using this option. The favorites button generates the same key code as Opt+1 on a Treo/Centro.

#### **Aux Button / Hold**

Maps TealWheel respectively to a short or long press of the extra side button on a newer Treo or Centro.

## Navigation Prefs

Sets the following options:

### When trying to move beyond the wheel edge

This option determines what action is performed when the 5-way navigator is used to move the highlighted square outward (away from center) past the wheel edge in each of the 4 compass directions. Choices include:

#### *Rotate CCW*

Rotate counter-clockwise

#### *Rotate CW*

Rotate clockwise

#### *Close Wheel*

Close the wheel with no further action

#### *Previous Wheel*

Open the previous wheel in the wheel list

#### *Next Wheel*

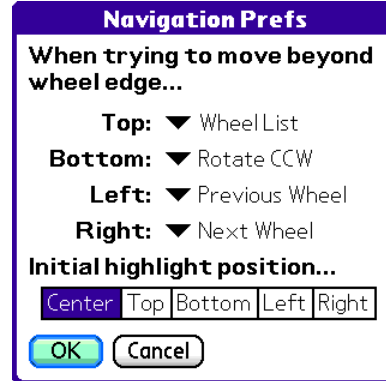
Open the next wheel in the wheel list

#### *Wheel List*

Open a list of wheels to select one by name

### Initial highlight position

Determines which icon, if any, is automatically highlighted when the *Icon Wheel* is first opened.



## History Prefs

The following options determine the order and direction in which a wheel's history icons (if any) are filled.

### History icons start at

Selects the first history icon (top, bottom, left, or right). This icon holds the last application visited.

### Initial highlight position

Determines the direction (clockwise or counter-clockwise) in which the history icons are filled (from most recent to least recent).



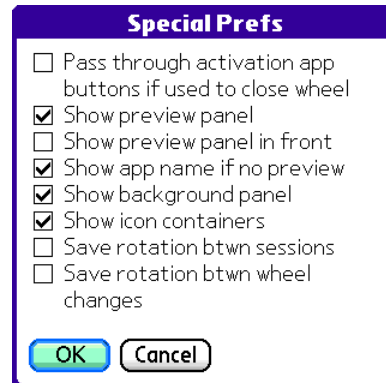
## Special Prefs

Sets the following special options:

### Pass through activation app buttons

When this option is enabled and the *Icon Wheel* is open, if you press a hardware button that is mapped as an activation button, the button press will be passed on to the application underneath.

If this option is unchecked, pressing an activation button a second time will close the wheel with no action.



### Show preview panel

When this option is checked, a thumbnail screen image will be saved for every application when it is placed in the application history. When a corresponding history icon is selected, the preview image is shown in the *center hub*.

### Show preview panel in front

If checked, the preview panel is shown in front of icons instead of behind.

### Show app name if no preview

When this option is checked, the name of the selected icon's application or function is shown in the *center hub* if no preview is available.

### Show background panel

Use this option to reduce screen "flashing" when changing selected icons. When enabled, add a blank preview panel is added underneath the *center hub* if no preview is available.



### Show icon containers

Uncheck this option to show bare icons alone without their "container" rectangles.

### Save rotation between sessions

When this option is checked, the wheel rotation is kept between times you popup *Icon Wheel*. Otherwise, the wheel is reset to its initial position when the wheel is opened.

### Save rotation between wheel changes

When this option is checked, the wheel rotation is kept when you change to another wheel. Otherwise, the wheel is reset to its initial position when switching to a new wheel.

## Wheel Prefs

Sets the following special options:

### Open with...

Selects a specific starting wheel to open each session or restores the last wheel open.

### Wheel Visibility / Names

Allows you to select which wheels are enabled and to choose a custom name for each wheel.



**Wheel Prefs**

**Open with:**  
▼ Last wheel open

**Wheel Names:**

- ☒ **A:** Apps.....
- ☒ **B:** Comm.....
- ☒ **C:** Games.....
- ☒ **D:** Utils.....
- ☒ **E:** Work.....

OK Cancel

## Activation Apps List

The *Activation Apps List* lets you limit which apps support the *Icon Wheel*. Use it to restrict the wheel from apps that use incompatible display modes or use the activation button for a custom purpose.

Select the *Add* button to add applications, or the *Rem* button to remove a selected app from the list. When the *Unlisted Apps* box is selected, the *Icon Wheel* is disabled within apps on the list. When *Listed Apps* is selected, the *Icon Wheel* is supported only in the indicated apps.



**Activation Apps List**

**Allow wheel activation in...**

All Apps | Unlisted Apps | Listed Apps

Calc  
Camera  
Camcorder  
Voice Memo

OK Cancel Add Rem

## History Apps List

The *History Apps List* lets you restrict which apps get added to the history of recently- run applications. Similar to their counterparts on the *Activation Apps List*, the *Unlisted Apps* and *Listed Apps* buttons respectively exclude apps from the history list or limit history only to the selected apps.



**History Apps List**

**Save history for...**


All Apps | Unlisted Apps | Listed Apps

Voice Memo  
TealLock  
Security

OK Add Rem Refresh Apps

## Card App Folders

TealWheel supports applications stored on external storage cards and internal storage (USB) volumes. By default, the program searches in the "/PALM/Launcher" folder, which is the location used by the standard Palm Launcher. Using the *Card App Folders* screen, however, you can specify additional folders where application files may be stored.



**Card App Folders**

1: /PALM/Launcher ...

2: / ...

3: /PALM/Games ...

4: ...

5: ...

6: ...

7: ...

8: ...

9: ...

10: ...

OK Cancel

## **Appendix A – Revision History**

Version 1.00 – April 25, 2009

First debut on beta test page

## **Appendix B – Contact Info**

TealWheel by TealPoint Software  
©2009 All Rights Reserved.

TealPoint Software  
454 Las Gallinas Ave #318  
San Rafael, CA 94903-3618  
We look forward to hearing from you.

Please visit us at [www.tealpoint.com](http://www.tealpoint.com), or email us at [contact@tealpoint.com](mailto:contact@tealpoint.com).

## **Appendix C – Registering**

Registering allows you to use the program past the 30-day expiration period and turns off registration reminders.

Currently, you may register by snail mail or online with a credit card and a secured server from the store where you downloaded the software. For the first option, send the following information on a sheet of paper separate from your payment.

- Product Name
- E-Mail Address (write clearly)
- HotSync User ID (Pilot Name Required for Passkey generation. It can be found on the main screen of the HotSync application on the Pilot as "Welcome \_\_\_\_\_" or in the corner on a PalmIII or higher)
- Check (drawn off a US Bank) or Money Order for (\$19.95 US). No international checks or money orders please.

## Appendix D – Products

Visit us online for our complete product line, including:

**SHORTCIRCUIT ( <http://www.tealpoint.com/softshrt.htm> )**

A new twist on game play fused from your all time action puzzle favorite games, connect falling conduit pieces into explosive loops in this frantic race against the clock.

**SUDOKUADDICT ( <http://www.tealpoint.com/softsudo.htm> )**

Sudoku Addict brings to your handheld the addictive worldwide puzzle craze that has displaced crossword puzzles in many newspapers in Great Britain and Japan.

**TEALAGENT ( <http://www.tealpoint.com/softagnt.htm> )**

Get news, movie times, stock quotes, driving directions, web pages and more without need for a wireless connection. TealAgent fetches and formats web-based content for offline viewing.

**TEALALIAS ( <http://www.tealpoint.com/softalia.htm> )**

Free up memory and make the most of external expansion cards. Placeholder 'Alias' shortcut files automatically find, load, and launch apps and data from external SD cards, increasing free main memory.

**TEALAUTO ( <http://www.tealpoint.com/softauto.htm> )**

Track and graph automobile mileage, service, and expenses with TealAuto, the complete log book for your car or any vehicle. Extensive customization options and unmatched in features and functionality.

**TEALBACKUP ( <http://www.tealpoint.com/softback.htm> )**

Backup your valuable data with TealBackup, supporting manual and automatic backups to SD/MMC/CF cards and Memory Stick, backups through HotSync, and optional compression and encryption.

**TEALDESKTOP ( <http://www.tealpoint.com/softdesk.htm> )**

Launch applications with TealDesktop, the themed replacement for the standard system launcher screen with tabs, multiple card folders, drag and drop, and more

**TEALDIET ( <http://www.tealpoint.com/softdiet.htm> )**

Shape up your life with TealDiet, the diet, exercise, and personal tracking application for mobile devices. Lose weight, build more muscle, and live healthier with TealDiet.

**TEALDOC ( <http://www.tealpoint.com/softdoc.htm> )**

Read, edit, and browse documents, Doc files, eBooks and text files with TealDoc, the enhanced doc reader. Extensive display and customization options; TealDoc is unmatched in features and usability.

**TEALECHO ( <http://www.tealpoint.com/softecho.htm> )**

Improve your Graffiti text input speed and accuracy, seeing what you write with TealEcho digital "ink". No more writing blind!

**TEALGLANCE ( <http://www.tealpoint.com/softglnc.htm> )**

See the time, date, upcoming appointments and todo items at power-up with TealGlance. The TealGlance pop-up utility and key guard comes up when you power up, letting you see your day "at a glance."



**TEALINFO ( <http://www.tealpoint.com/softinfo.htm> )**

Lookup postal rates, area codes, tip tables, schedules, airports, and info from hundreds of free TealInfo databases. Create you own mini-apps; a handheld reference library.

**TEALLAUNCH ( <http://www.tealpoint.com/softlnch.htm> )**

Launch applications instantly with the TealLaunch pop-up launcher and button/stroke-mapping utility. Map applications to button presses and pen swipes so you can get to your apps quickly.

**TEALLOCK ( <http://www.tealpoint.com/softlock.htm> )**

Secure and protect your handheld with TealLock, the automatic locking program with encryption and card support. TealLock has unmatched features and customization options for personal or corporate use.

**TEALMAGNIFY ( <http://www.tealpoint.com/softlens.htm> )**

Save your eyesight with TealMagnify, an ever-ready magnifying glass that works with most any program. TealMagnify lets you enlarge the screen for those times the text is too small to read.

**TEALMASTER ( <http://www.tealpoint.com/softmstr.htm> )**

Replace Hackmaster with TealMaster, the supercharged 100%-compatible system extensions manager. TealMaster adds enhanced stability, configuration and diagnostic features and PalmOS 5.0 hack emulation.

**TEALMEAL ( <http://www.tealpoint.com/softmeal.htm> )**

Save and recall your favorite restaurants with TealMeal, the personal restaurant database. With TealMeal's handy sorting and selection options, never ask "where to eat" again.

**TEALMEMBRAIN ( <http://www.tealpoint.com/softmemb.htm> )**

Stop crashes and monitor your memory use with TealMemBrain, the application stack stabilizer. TealMemBrain boosts your stack space on OS3 and OS4 handhelds, eliminating causes of system instability.

**TEALMOVER ( <http://www.tealpoint.com/softmovr.htm> )**

Beam, delete, rename, and copy files with TealMover, the file management utility for SD/CF/MS cards. TealMover lets you see, move, modify, hex edit, and delete individual files.

**TEALMOVIE ( <http://www.tealpoint.com/softmovi.htm> )**

Play and convert high-quality video and synchronized sound with the TealMovie multimedia system. TealMovie includes a handheld audio/movie player and a Windows AVI/MPEG/Quicktime converter program.

**TEALNOTES ( <http://www.tealpoint.com/softnote.htm> )**

Insert freehand graphics anywhere with TealNotes "sticky notes" for Palm OS. TealNotes can be inserted into memos, to-do lists, address book entries--almost anywhere you currently have editable text.

**TEALPAINT ( <http://www.tealpoint.com/softpnt.htm> )**

Paint, sketch, or draw with TealPaint, the all-in-one mobile graphics paint program and photo editor. Highlights include 25 tools, 32 patterns, 49 brushes, zoom, layers, undo, & JPEG/GIF/BMP support.

**TEALPHONE ( <http://www.tealpoint.com/softphon.htm> )**

Supercharge the address book with TealPhone, the contacts replacement with superior interface and options. Highlights include enhanced display, search, phone-dialing, groups, and linking.

**TEALPRINT ( <http://www.tealpoint.com/softprnt.htm> )**

Print text and graphics to IR, serial, and Windows printers with TealPrint. With numerous connection options, TealPrint, is the all-in-one text and graphic printing solution.

**TEALSAFE ( <http://www.tealpoint.com/softsafe.htm> )**

Store your passwords, credit cards, PIN numbers, and bank accounts in the TealSafe data wallet. With maximum security and encryption, TealSafe is a must for features and security.

**TEALSCAN ( <http://www.tealpoint.com/softscan.htm> )**

Keep your device stable, up-to-date, and running smoothly with TealScan, the comprehensive system utility for PalmOS handhelds

**TEALSCRIPT ( <http://www.tealpoint.com/softscrp.htm> )**

TealScript adds Graffiti text input to Treo and Centro smart phones. For devices that already support Graffiti, TealScript adds a trainable system that supports both multi-stroke and Graffiti-1.

**TEALTRACKER ( <http://www.tealpoint.com/softtrac.htm> )**

Track time and expenses with a fast, easy to use interface that requires minimal effort. Generate reports and export data to a spreadsheet. TealTracker is your personal time clock.

**TEALTOOLS ( <http://www.tealpoint.com/softtool.htm> )**

Improve productivity with TealTools pop-up Palm Desk Accessories. TealTools includes a popup calculator, clock/stopwatch, preferences panel, editing panel, memopad, and a file/backup manager.

## Appendix E – Legal Notice

We at TealPoint Software are committed to providing quality, easy-to-use software. However, this product is provided without warranty and the user accepts full responsibility for any damages, consequential or otherwise, resulting from its use.

This archive is freely redistributable, provided it is made available only in its complete, unmodified form with no additional files and for noncommercial purposes only. Any other use must have prior written authorization from TealPoint Software.

Unauthorized commercial use includes, but is not limited to:

- A product for sale.
- Accompanying a product for sale.
- Accompanying a magazine, book or other publication for sale.
- Distribution with "Media", "Copying" or other incidental costs.
- Available for download with access or download fees.

This program may be used on a trial basis for 30 days. The program will continue to function afterwards. However, if after this time you wish to continue using it, please register with us for the nominal fee listed in the program.

Thank you.

### CUSTOMER LICENSE AGREEMENT

YOU ARE ABOUT TO DOWNLOAD, INSTALL, OPEN OR USE PROPRIETARY SOFTWARE OWNED BY TEALPOINT SOFTWARE, INC. CAREFULLY READ THE TERMS AND CONDITIONS OF THIS END USER LICENSE BEFORE DOING SO, AND CLICK BELOW THAT YOU ACCEPT THESE TERMS.

1. License. You are authorized to use the Software Product owned and developed by TealPoint Software, Inc. on a single hand-held computing device on a trial basis for thirty (30) days. If after 30 days you wish to continue using it, you are required to register with TealPoint and pay the specified fee. This license is not exclusive and may not be transferred. You may make one copy of the Software for back-up and archival purposes only.

2. Ownership. You acknowledge that the Software Product is the exclusive property of TealPoint Software, Inc, which owns all copyright, trade secret, patent and other proprietary rights in the Software Product.

3. Restrictions. You may NOT: (a) decompile or reverse engineer the Software Product; (b) copy (except as provided in 1 above) sell, distribute or commercially exploit the Software product; or (c) transfer, assign or sublicense this license.

4. Disclaimer of Warranty and Liability. TEALPOINT MAKES NO WARRANTY, EXPRESS OR IMPLIED, AS TO THE ACCURACY, COMPLETENESS OR FUNCTIONING OF THE LICENSED SOFTWARE, INCLUDING WITHOUT LIMITATION, WARRANTIES OF MERCHANTABILITY OR OF FITNESS FOR A PARTICULAR PURPOSE, ALL OF WHICH TEALPOINT DISCLAIMS. ALL LIABILITY IS DISCLAIMED AND TEALPOINT ASSUMES NO RESPONSIBILITY OR LIABILITY FOR LOSS OR DAMAGES OF ANY KIND, DIRECT OR INDIRECT, INCIDENTAL, CONSEQUENTIAL OR SPECIAL, ARISING OUT OF YOUR USE OF THE LICENSED SOFTWARE, EVEN IF ADVISED OF THE POSSIBILITY THEREOF.

5. Termination. You may terminate this Agreement at any time by destroying your copy(ies) of the Software Product. The Agreement will also terminate if you do not comply with any of its terms and conditions, at which time you are required to destroy your copy(ies) of the Software Product and cease all use.

6. Applicable Law. This Agreement is governed by the laws of the State of California.