

**MOTION  
APPS**

**mRSS Reader v4.0.2**

**For the Palm Treo™ 600, Treo™ 650, Treo™ 700p, Treo™ 680, Treo™ 755p and Centro**

MotionApps  
77 Dow Place, Suite 103  
San Francisco, CA 94107, USA

[www.MotionApps.com](http://www.MotionApps.com)

# **mRSS Reader v4.0.2 User Manual**

# Disclaimer

Information in this document is subject to change without notice and does not represent a commitment on the part of MotionApps. The software and the solutions described in this document are furnished under a license agreement. It is against the law to copy or reverse engineer the software or solutions except as specifically allowed in the license agreement. No part of this manual may be reproduced or transmitted in any form or by any means, electronic or mechanical, including photocopying and recording, for any purpose without the written permission of MotionApps.

This software, all manuals as well as all solutions are copyright ©2007 MotionApps. All rights reserved. Printed in the United States of America.

Companies, names, and data used in examples herein are fictitious unless otherwise noted.

MotionApps and mRSS are trademarks of MotionApps.

All other product names are trademarks or registered trademarks of their respective holders, used only to the owner's benefit, without the intent to infringe.

**IMPORTANT - Read the full license terms and conditions below before installing. This License provides you with limited rights to use the software, conditioned upon your continued compliance with these terms and conditions. INSTALLATION OF THIS SOFTWARE WILL CONSTITUTE YOUR ACCEPTANCE OF THESE TERMS AND CONDITIONS.**

## END-USER LICENSE

Under single End-User License, you may use this program only on a single communicator, together with the related computer(s) used by you in conjunction with that communicator.

You may not use the program for any unlawful purpose, including infringement of the copyrights or other proprietary rights of others, or in any illegal manner or for creation or distribution of illegal content. You agree to indemnify MotionApps for any and all claims arising from any violation by you of the terms of this End-User License.

The following warranty and liability disclaimer apply to this product.

THIS PROGRAM IS PROVIDED "AS IS" WITHOUT WARRANTY OF ANY KIND, EITHER EXPRESS OR IMPLIED, INCLUDING BUT NOT LIMITED TO ANY IMPLIED WARRANTY OF MERCHANTABILITY, NON-INFRINGEMENT OR FITNESS FOR A PARTICULAR PURPOSE, ALL OF WHICH MOTIONAPPS SPECIFICALLY DISCLAIMS, TO THE MAXIMUM EXTENT PERMITTED BY LAW. THE ENTIRE RISK AS TO THE RESULTS AND PERFORMANCE OF THE PROGRAM IS ASSUMED BY YOU. SHOULD THE PROGRAM PROVE DEFECTIVE, YOU (AND NOT MOTIONAPPS OR ITS DISTRIBUTORS OR DEALERS) ASSUME THE ENTIRE COST OF ALL NECESSARY SERVICING, REPAIR OR CORRECTION.

NEITHER MOTIONAPPS NOR ANYONE ELSE WHO HAS BEEN INVOLVED IN THE CREATION, PRODUCTION, OR DELIVERY OF THIS PROGRAM SHALL BE LIABLE FOR ANY DIRECT, INDIRECT, CONSEQUENTIAL OR INCIDENTAL DAMAGES, LOST PROFITS, BUSINESS INTERRUPTION OR LOSS OF INFORMATION ARISING OUT OF THE USE, THE RESULTS OF USE, OR INABILITY TO USE SUCH PROGRAM, OR DAMAGE OF LOSS CAUSED BY THE PROGRAM, EVEN IF ADVISED OF THE POSSIBILITY OF SUCH DAMAGES OR CLAIM. SOME STATES DO NOT ALLOW THE EXCLUSION OR LIMITATION OF LIABILITY FOR CONSEQUENTIAL OR INCIDENTAL DAMAGES SO THE ABOVE LIMITATION MAY NOT APPLY TO YOU.

TO THE MAXIMUM EXTENT PERMITTED BY LAW, MOTIONAPPS' ENTIRE LIABILITY AND YOUR EXCLUSIVE REMEDY IN THE EVENT OF A BREACH OF MOTIONAPPS' OBLIGATIONS IS LIMITED TO A REFUND OF ANY LICENSE FEE YOU ACTUALLY PAID TO MOTIONAPPS FOR THIS PROGRAM.

# Table of Contents

|                                    |    |
|------------------------------------|----|
| Table of Contents .....            | 3  |
| Introduction.....                  | 4  |
| Welcome.....                       | 4  |
| How to Reach Us .....              | 4  |
| Palm OS Basics .....               | 4  |
| Installation.....                  | 5  |
| The mRSS Package.....              | 5  |
| Installing Your Software .....     | 5  |
| About the Demo Version .....       | 5  |
| License activation .....           | 5  |
| Using mRSS .....                   | 6  |
| Overview.....                      | 6  |
| Managing Subscriptions.....        | 6  |
| OPML Import.....                   | 8  |
| Downloading News .....             | 10 |
| Reading News.....                  | 10 |
| Configuring mRSS .....             | 11 |
| Keywords .....                     | 12 |
| Archive .....                      | 13 |
| Frequently Asked Questions.....    | 14 |
| Troubleshooting .....              | 17 |
| Contacting Technical Support ..... | 17 |
| Release History.....               | 18 |
| mRSS Reader v4.0.2.....            | 18 |
| mRSS Reader v4.0.1.....            | 18 |
| mRSS Reader v4.0.....              | 18 |
| mNews v3.2.....                    | 18 |
| mNews v3.1 .....                   | 18 |
| mNews v3.0.....                    | 18 |
| mNews v2.0.3.....                  | 18 |
| mNews v2.0.2.....                  | 18 |
| mNews v2.0.1 .....                 | 18 |
| mNews v2.0.....                    | 18 |
| mNews v1.0.....                    | 18 |

# Introduction

## Welcome

With mRSS you can download and read the latest news from numerous sources of your choice from around the world right on your Treo.

mRSS is the RSS news reader for Palm Treo devices. RSS news feeds is an emerging channel for delivering the news, blogs and corporate communication to the end users. All major news and information providers support the RSS format which mRSS can download and display.

Optimized for Palm Treo, mRSS will leverage the full power of your phone. You will be able to read news in a variety of formats, including Web browser view for content rich items. When you find a topic you want to know more about, just a single tap or key press will take you to the publisher's site where you can find all the details you need.

The innovative Keyword Watch feature enables you to define a hot topic you are especially interested in. While you refresh the news from the Web, mRSS will collect all the topics containing the keyword and present them to you in a single place.

Thank you for choosing mRSS!

## How to Reach Us

Customer satisfaction is our top priority, so if you have any questions, comments, suggestions, or requests, we would be happy to hear from you. Here's how to reach us:

**Web:** <http://www.MotionApps.com/support>

**Mail:** MotionApps  
77 Dow Place, Suite 103  
San Francisco, CA 94107, USA

## Palm OS Basics

This manual assumes the user has knowledge of fundamental Palm OS concepts. If you are unsure how to run an application or other related concept, please consult the user's guide that came with your communicator.

# Installation

## The mRSS Package

The package should contain the following in a zip file:

- mRSS Palm OS “.prc” file
- This Guide in PDF format

Requirements:

- A Treo 600, Treo 650, Treo 700p, Treo 680, Treo 755p or Palm Centro Communicator from Palm

## Installing Your Software

To install an application transfer the .prc file to your device through a regular HotSync or by sending it to Palm device over Bluetooth or IR connection.

If you are unsure how to install an application on your communicator, please consult the manual that came with it.

**Before installing mRSS on your device, make sure that you have deleted any previous versions of mRSS you may have.**

**Please ensure that the application resides in the main memory of the device and not on the SD card.**

## About the Demo Version

The demo version of mRSS is fully functional during the 7 days trial period. After the trial period expires, mRSS will automatically turn off. If you try to run mRSS after this period, a trial expiration message will be displayed, and mRSS will remain off until you activate it.

## License activation

When you purchase mRSS, the activation code will be sent to you via e-mail. **Please make sure that you have used the correct e-mail address during the purchase process.**

In order to activate mRSS; start the application, select "Activate" option from the main menu and follow on-screen instructions.

# Using mRSS

## Overview

With mRSS you can download and view the latest world headlines from numerous sources. mRSS downloads the news in XML format from RSS content providers and displays them on your Treo.

Typical usage of mRSS involves defining the news channels that represent the source of the news, and downloading and reading actual news items from these channels.

After installing mRSS, the first thing you will want to do is to configure your subscriptions.

## Managing Subscriptions

When you open mRSS after installing, the *"Welcome to the mRSS"* form will appear. On this form mRSS offers three possible ways of defining your subscriptions:

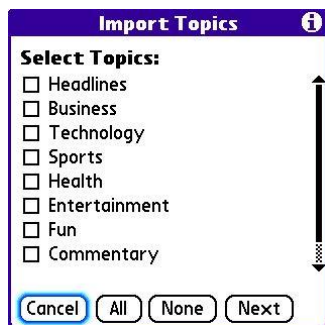
- Import default channels
- Add channel manually
- Import OPML file



### Import default channels

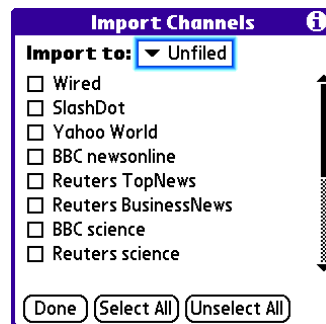
The *"Channels / Import Default"* item from the main menu can be used for the same purpose.

If you select this option, the *"Import Topics"* form with number of topics will appear. A topic is a collection of pre-defined channels you can import. For example, the *"Entertainment"* topic contains channels related to music, TV and movies.




To see news channels related to some topics check the topics you are interesting in and select *"Next"* button. mRSS will download pre-defined channels and list them in the *"Import Channels"* form. (shown on the right).

Check the news channels you want to import into your subscriptions and select the *"Done"* button.



The category displayed in the drop down list is assigned automatically to newly created channels.

## Add channel manually

The “New” icon in bottom of the screen (  ) can be used for the same purpose. If you select this option “Add New Channel” form will appear.



The “Add News Channel” dialog box has a title bar with the text “Add News Channel”. It contains two text input fields: “News Channel Name:” and “URL:”. Below the “URL:” field is a button labeled “Unfiled”. At the bottom of the dialog are three buttons: “Done”, “Cancel”, and “Login”.

You can define the news channels by entering the channel name and download URL. Just make sure you do not enter the “HTTP : / / ” at the beginning of the URL.

mRSS also enables news download from news channels whose host site requires authentication.

If you select “Login” button, the “Login” dialog will show up where you can define the login “User name” and “Password “ for the new adding channel. Next time when you try to refresh the news, login information will be automatically added to the request.



The “Login” dialog box has a title bar with the text “Add News Channel”. It contains two text input fields: “User Name:” and “Password:”. Below the “Password:” field are two buttons: “Done” and “Cancel”.

## Import OPML file

The “Channels / Import OPML” item from the main menu can be used for the same purpose.

This option is designed for the experienced RSS users and is described in a separate section below.(OPML Import)

## General news feed management

The main “mRSS” form is the place where you can manage the news channels you want to read.



The “mRSS” main window shows a list of news channels. The list has columns for channel name, category, and time. The channels listed are: BBCN, Christ, CNN.c, Guard, Memo, Moreover - Top stor..., Mother Jones.com, and Reuters: Top News. The categories listed are: All, Business, Entertainment, Science, Technology, and Unfiled. The “Edit Categories...” option is highlighted in the list.

The channels are organized into categories. You can switch between categories using the drop down list on the top of the form.

By selecting the “Edit Categories ...” item from the list you can create new categories, rename or delete existing ones.

If you delete a category, all channels under that category will be moved to the “Unfiled” category.



The “Edit Categories” dialog box has a title bar with the text “Edit Categories”. It contains a list of categories: Business, Entertainment, Science, and Technology. Below the list are four buttons: “OK”, “New”, “Rename”, and “Delete”.

Each news channel in the list has an associated menu icon (☰) on its left side. If you select this icon the channel popup menu will show up. This menu enables several options which can be performed on the news channel (refresh, edit, mark as read/unread, delete items, delete channel).



At the right of each channel name, the time or date of the latest download is displayed.

The main “mRSS” form also enables you to delete news items in all defined news channels. When you select the delete button (🗑️), the “Delete News” dialog will be displayed.



You can specify the number of days on this dialog, and mRSS will delete all news older than that number of days. “Delete All Items” button will delete all the news.

To edit a particular subscription, select the “Edit” item from the channel’s popup menu. This will open the “Edit News Channel” form where you can edit the channel definition, change assigned category or delete it by tapping the “Delete...” button.

The “Delete Items...” button on the “Edit News Channel” form enables you to delete the news items downloaded from the selected channel in a manner similar to the one described above.



You can always change the channel’s login information by selecting the “Login” button.

## OPML Import

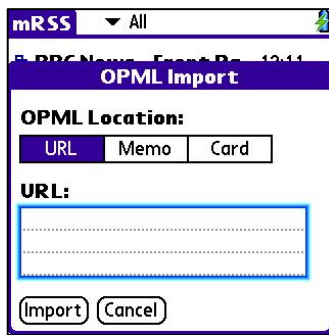
OPML files contain subscription lists, i.e. the catalogue of available news sources. Many news-related sites on the Web aggregate the news sources and make their definitions available in OPML format. mRSS can import these lists automating the process of adding new news sources to your subscription list.

If you want to import an OPML file select the “Channels / Import OPML” item from the main form menu. mRSS can read OPML files from three locations:

- From the Web (URL)
- From a record in the Memo application
- From a file on the SD card



## URL



There are OPML files freely available across the Internet. If you know the URL of an OPML file and you want to import some of the subscriptions which that file contains enter the URL into the URL field and select the Import button.

## Record in Memo application

OPML file which contains your favorite subscriptions could be used to create Memo record. When you select “Import” while “Memo” button is highlighted, mRSS will try to import Memo record named “mRSS.opml”.

Be sure your OPML Memo record has first line “mRSS.opml”.

If you decide to create your own OPML memo here is a simple example:

```
mRSS.opml
<opml version="1.1" >
<head>
<title>business</title>
</head>
<body>
<outline
    text="About Economics"
    title="About Economics"
    type="rss" version="RSS"
    xmlUrl="http://feeds.feedburner.com/boingboing/iBag"
    htmlUrl="http://economics.about.com/"
    description="About Economics"/>

<outline
    text="About Globalization Issues"
    title="About Globalization Issues"
    type="rss" version="RSS"
    xmlUrl="http://z.about.com/6/g/globalization/b/index.xml"
    htmlUrl="http://globalization.about.com/"
    description="About Globalization "/>

</body>
</opml>
```

**Note:** Each <outline> element in a subscription list has, at minimum, the following attributes: type, text, xmlUrl. Text is the name of the feed, usually derived from the <title> element of the RSS <channel>. xmlUrl is the Web address of the feed.


## File on SD card

If you select “Import” button while “Card” button is selected, mRSS will try to import the file named “mRSS.opml” from the “/mRSS” folder on the SD card.

Make sure that your OPML file is named “mRSS.opml” and saved in “/mRSS” folder on the SD card.

## Downloading News

The main mRSS screen is the central place you will use to download and review the latest news. Once you have configured your news channels, you can refresh:

- **All news channels under the selected category** - Select the “refresh” button: 
- **Single news channel** - Select the “refresh” item from the channel’s popup menu

Update Window will inform you about current news download status.



**Login**

Please enter login information for BusinessWeek - Top News

**User Name:**

.....

**Password:**

.....

☒ Remember my password

While you are trying to download the news from a news channel which requires authentication, if channel don't have set up login information, “Login” dialog will show up.

Enter the “User Name” and “Password” to reach the news. Wrong entered login information will return you again to the “Login” dialog.

If you select the “Remember my password” check box, login information will be saved and automatically added to all future channel refresh.

## Reading News

You can view the downloaded news by selecting the channel name on the main “mRSS” form.

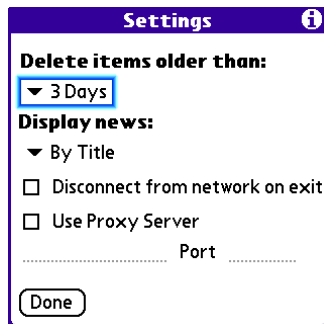


Channels that contain unread news will be showed in bold font. If you want to change the channel's read /unread status, select “Mark as Read / Unread” item from channel's popup menu.

When you select a news channel you want to view, mRSS will display its content in one of the three possible views. You can configure which view type you want to use for reading news in the mRSS “Settings” dialog.

## Configuring mRSS

To configure mRSS, select the “mRSS / Settings” item from the main form menu.



With the first option you can instruct mRSS to automatically delete all downloaded news older than the specified number of days. This action will be performed in the background.

The “Display news” option enables you to select which of the three possible methods for viewing news you want to use. Available choices are:

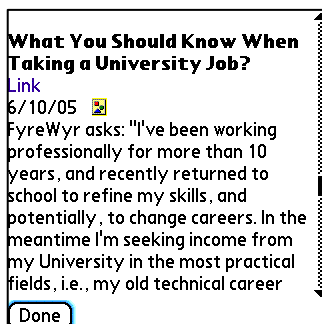
### By Title



mRSS will display only titles of news items for the selected news channel. Tapping or selecting the news title with the 5-way navigation key will open the selected news item in a separate view (shown on the right).



### Quick View



mRSS will display a preview of news channel content without images and any graphical elements it may contain. The blue, underlined text “Link” in this type of views is a hyperlink – if you select it mRSS will launch the Web browser and direct it to the relevant destination.

The small icon (🖼️) is a hyperlink and represent replacement for the image which news item may contain. If you select this icon mRSS will download and show the image.

## With Browser



This option makes mRSS use the Treo's built-in Web browser for displaying news channel content. Using this option you will be able to see the complete content of a news channel, including images, sounds and other non-textual information.

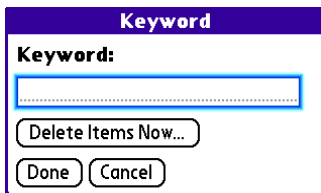
By checking "Disconnect from network on exit" option in settings dialog you don't have to worry about the connection. mRSS will open network connection if it is needed and close it on exit. If you want to manually disconnect while using mRSS select the "mRSS / Disconnect" item from main form's menu.

If you want to use a proxy server check the "Use Proxy Server" option and enter the proxy server name and port number.

## Keywords

The keyword feature gives you the possibility to define a keyword that is of importance to you. While refreshing the news from the Internet, mRSS will scan downloaded content looking for the keyword. All news items containing this keyword will be copied into the special section for quick access.

To configure the Keyword select the "Items / Edit Keywords" item in the main form menu. The "Keyword" dialog will appear.



Here you can define your keyword, delete it, or delete all the news items collected so far.

You can always read collected news items containing the defined keyword by selecting the "keyword" icon on the bottom of the mRSS main form (🔍).

The "Items / View Keywords Items" item from the main menu can be used for the same purpose.

**Note:** The Keywords feature will not be applied to already downloaded news – only the news downloaded *after* the keyword is defined will be checked. To search for a keyword in already downloaded news, use the Global Find feature of your Treo.



## Archive

While using mRSS you usually find some news items of special interest. With the archive feature you can collect the various news items from different channels and save them for permanent reference or later review. You can also export all the archived news to a single HTML file on your expansion card.



While you are reading news with the "Display news" option in the mRSS settings dialog set to "By Title", you will see the "Archive" button for the news items which are not already copied to the Archived News.

By selecting the "Archive" button current news item will be copied to the Archived News.

You can read Archived News items by selecting the "Archive" icon on the bottom of the mRSS main form (📖). The "Items / View Archive" item from the main menu can be used for the same purpose.



When you select the "Items / Delete Archive..." item from the main menu, the "Delete News" dialog will be displayed. You can specify the number of days in this dialog, and mRSS will delete all Archived News items older than that number of days. The "Delete All Items" button will delete all Archived News items.



While reading Archived News with the "Display news" option in the mRSS settings dialog set to "By Title", you can select the "Delete" button and the current Archived News item will be removed from the Archive.



The Export Archive News option gives you the possibility to export all Archived News items to the "mRSS-Archive.html" file which will be saved in the "/mRSS" folder on your SD card. This file can be transferred to the desk top PC or opened in the web browser.

# Frequently Asked Questions

## 1. What is mRSS?

mRSS is the RSS newsreader for Palm Treo devices. The RSS news feeds is an emerging channel for delivering the news, blogs and corporate communication to the end users. All major news and information providers support the RSS format, which mRSS can download and display.

## 2. What are “news items” and “news channels”?

News channel is the source of news information (news items). The main property of a news channel is its URL – a place on the Internet where news agencies and other content providers publish the news in RSS format.


## 3. What is RSS?

The Rich Site Summary (RSS) format, previously known as the RDF Site Summary, has quietly become the dominant format for distributing news headlines on the Web. It is implemented as a subset of XML language.

## 4. What is OPML?

OPML is a file format that can be used to exchange subscription lists between programs that read RSS files, such as feed readers (mRSS).

## 5. Where can I find more news channels?


The news channels that mRSS can access and download are all over the Internet. If you spot an “XML” sign like this  while browsing the Web, the chances are that the site is offering its content in RSS format suitable for mRSS.

In addition to single Web sites that can present their content in RSS format, there are many Web sites specialized in collecting and distributing RSS news from various sources.

## 6. I have installed mRSS and there are no channels to be refreshed. How can I add channels?

If you want to read the news you must add news channels definitions to your subscription list. mRSS gives you an opportunity to import pre-defined news channels definitions.


To access this list, select “*Channels / Import Default*” from the main form menu, check the topic you are interesting in and tap the “Next” button. mRSS will download and show up the list of channels related to checked topics on the “*Import Channels*” form. Check the channels you want to import in your subscriptions list and select the “Done” button.

You can also add a news channel definition manually: select the  button on the “mRSS” form and fill out the required information (channel name and URL). You do not have to enter the “http://” portion of the URL.

## 7. How can I use an OPML file from the web to create news channels?

If you know the exact URL of the OPML file, select the “*Channels / Import OPML*” option from the main form menu. In the “*OPML Import*” dialog window enter the URL in the appropriate field and select the “Import” button. mRSS will download and process the OPML file and display the “*Import Channels*” form which lists all subscriptions from the OPML file. Check the ones you are interested in and select the “Done” button. The category displayed in the drop down list is assigned automatically to newly created channels.

**8. I added a lot of news channels; can I delete some of them from the list in the mRSS form?**

Yes, you can. Any news channel can be removed from the list - just select the channel's left side menu icon () and in showed popup menu select *"Delete Channel"*. The channel will be removed from the list and all its content (downloaded news items) will be erased.

Also when you edit a channel (select *"Edit"* from the channel's popup menu), if you select the *"Delete..."* button the effect will be the same.


**9. How can I create an OPML memo record?**

If you have an OPML file on your desktop PC you can use the Palm DeskTop application to create an OPML Memo record. Just copy the OPML file into a new Memo record and be sure it is named *"mRSS.opml"*. After the next HotSync operation this Memo record will be placed on your device.

**10. How do I read the news?**

Once you have downloaded the news, you can read them by selecting the news channel name on the main form. News channels that contain unread news will be showed in black bold font. If you want to change a channel's read/unread status, select *"Mark as Read/Unread"* from the channel's popup menu.

**11. How do I use "Keywords"?**

Select the *"Keywords"* option from the main menu and define your keyword. If mRSS detects a news item containing this keyword during the news download, it will copy it to the designated place. You can then review all such news by selecting the  button that will appear on the main form.

**12. What is the purpose of the "Archive"?**

While reading news you can copy favorite news items to the Archived News channel for later quick access without looking around the channels for them.

**13. How do I copy a news item to the Archive?**

While reading news with the *"Display news"* option in the mRSS settings dialog set to *"By Title"*, you will see the *"Archive"* button for the news items which are not already copied to the Archived News. By selecting this button the current news item is copied to the Archived News.

**14. How do I delete a news item from the Archive?**

While reading Archived News with the *"Display news"* option in the mRSS settings dialog set to *"By Title"*, you will see the *"Delete"* button for the single news items. By selecting the *"Delete"* button the current news item is removed from the Archive.

When you select the *"Items / Delete Archive..."* option from the main menu, the *"Delete News"* dialog will be displayed. You can specify a number of days in this dialog, and mRSS will delete all Archived News items older than that number of days. The *"Delete All Items"* button will delete all Archived News items.

**15. Can I read the news from a site which requires authentication?**

Yes, you can. While defining or editing (select *"Edit"* item from channel's popup menu) a news channel, you can select the *"Login"* button and a *"Login"* dialog will show up where you have to

enter the login information (user name and password). Login information will be automatically added to all future channel refresh.

In the case of missing or wrongly defined login information for the news channel whose host site requires authentication, the “*Login*” dialog will show up during the refresh.

**16. I would like to go through a proxy server to reach the news. How can I set up mRSS to use a proxy server?**

Select “*mRSS / Settings*” from the main form menu.

In the “*Settings*” dialog select the “*Use Proxy Server*” check box and enter “*Proxy Server*” and “*Port*” information.

Consult your system administrator or ISP to obtain the settings information.



# Troubleshooting

mRSS normally does not require troubleshooting.

However, if you are experiencing problems please check the mRSS FAQ list or contact MotionApps technical support.

## Contacting Technical Support

If you need to report a problem or request assistance when using this version of mRSS, please fill in the Support Request form on our Web site:

<http://www.motionapps.com/support>

To help us help you, please, be sure to include as much information, and as detailed description of your problem as possible.

# Release History

## **mRSS Reader v4.0.2**

- Support for Palm Centro

## **mRSS Reader v4.0.1**

- Support for Treo 700p

## **mRSS Reader v4.0**

- Added support for the Authentication

## **mNews v3.2**

- Added support for the Proxy Server
- Added podcast support
- UI improvements

## **mNews v3.1**

- Maintenance release

## **mNews v3.0**

- Added category support for the news channels
- Added support for archiving news items
- Added OPML import
- Added support for international characters

## **mNews v2.0.3**

- Maintenance release

## **mNews v2.0.2**

- Maintenance release

## **mNews v2.0.1**

- Added support for Treo 650
- Minor UI improvements

## **mNews v2.0**

- Added channel's popup menu and related support
- Added support for the "disconnect from network on exit" settings option
- Added support for the manual disconnect
- UI redesign

## **mNews v1.0**

- Initial release