

Uninstall Manager - How to Use

- Be sure to read the  **Sandbox Quick Start Guide**

Garbage is eating up your RAM!

Uninstall Manager saves valuable memory space while keeping your device clean and trouble-free.

Make sure that newly installed applications will be completely removed when they are no longer needed.

Uninstall Manager is **the most full-featured uninstaller available for the Palm OS**:

Uninstall Manager includes **many unique features** to help you stay on top of your software installations:

- **Completely remove applications** including all of their associated files and preferences, even hidden ones that are not removed by any other means.
- Uninstall manager includes an intelligent **Real-Sandbox mode** which allows you to install new applications inside completely isolated environments; launch, evaluate and safely delete applications without compromising other important data on your device (you can also keep these "isolated environments" on the expansion card to quickly test applications in the future).
- Start a **Recording**, download files from the internet, receive files from friends (Bluetooth, IR, etc) and copy files from the expansion card...and with a push of a button you can **quickly undo all changes** to your device.
- **Group files** on the main memory and the expansion card with different applications and make sure that ALL parts of the application are deleted when you choose to.
- Uninstall Manager **monitors file installations**; that besides allowing you to track your software installation habits will also make sure that any supporting files installed alongside applications are removed when you delete the application itself.
 - See the user manual and feature list below for **much more...**

Features:

- **The most full-featured uninstaller** available for the Palm OS.
- Monitors applications for saving hidden items.
- Works in the background with no user intervention.
- **Monitors file installations** using the HotSync® Manager.
- Cleans a68k cache/temporary files.
- Groups all related items together allowing quick and easy uninstallations.
- **Group files on the card** with RAM based applications and keep your card clean.
- **Sandbox mode:** A carefree environment to try out new applications.

- **Recording mode:** Quickly undo changes to your device.
- Monitors and deletes files and directories directly from the expansion card.
- Option to delete directories on the expansion card when deleting applications.
- Deletes **RAM based items when uninstalling card** based applications.
- Deletes **Card based items when uninstalling RAM** based applications.
- Allows for **uninstallation rollbacks** in case you change your mind (requires NG Undo).
- Find items monitored between a specified time period.
- **Smart Monitoring:** Only monitor true hidden files.
- **Delete protected files** that cannot be normally deleted.
- **Completely new Graphical User Interface.**
- Support for 320 X 480 Portrait and Landscape modes.
- Context-Sensitive Help - **a unique Help Mode.**
- Many more usability features.
- Protect Your Assets Now: Uninstall Manager guards your RAM from garbage!
- **Available in the Registered Version:** There is no need to open Uninstall Manager to completely delete applications! (see **RDD** below for more).
- **See below for many more...**

Overview

Uninstall Manager's main functionality is to monitor applications for saving hidden items on your device.

Besides that, UM will also allow you to easily test new applications, quickly undo changes and will make sure your expansion card is kept tidy.

More about hidden items: When you launch applications, from the built-in memory or the Expansion Card, they save data onto your device. This data is used by the application when active, and normally, will be deleted when you delete the application itself. Each and every application on your device has to have a unique Creator ID which has to be registered with Palm. Applications, in general, use their Creator ID to tag the data they save (files, preferences and various settings) on your device. When you choose to delete an application, the system knows which files and preferences it needs to delete by comparing them to the application's Creator ID. However, some applications (intentionally or due to a programming error) save items under a different Creator ID than their own; these items will remain on your device, occupying your precious handheld memory for good. When using Uninstall Manager to uninstall applications, ALL items created by a certain application will be completely deleted, including items saved under a different Creator ID, files created by the application on the card and even files installed alongside the application.

When trying a lot of shareware products; your device may already be cluttered with unneeded files and preferences that are taking up space and may cause problems. To analyze and get rid of old leftovers that already inhabit your device, use **Cleanup**; to prevent your device from being a victim to future shareware products, use Uninstall Manager.

Notes:

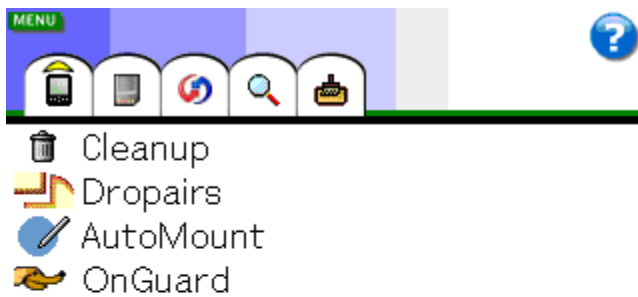
- Uninstall Manager monitors **NEW** applications, that is, Applications installed **AFTER** its installation.
 - Having orphaned items on your handheld not only wastes memory space, but can also considerably slow it down.
 - Use Uninstall Manager with existing applications to make sure the expansion card remains clean when uninstalling applications.
 - **DO NOT move Uninstall Manager to the expansion card.**
 - **Uninstall Manager Requires a Palm OS 5 based device.**
-

How to Use

When you first launch Uninstall Manager it will list all applications in the RAM (main memory).

Your handheld's Main Memory is where all of your programs store their preferences (settings) and files. When you launch applications that are located on the expansion card, the application is first copied into the RAM; when you exit from it (back to the application launcher) it will be deleted from the RAM, leaving its files and settings behind for the next time around.

1. Applications List



1.1 - To uninstall/delete applications, select the trash can ("**Uninstall**") icon:



You can tap the bottom-left part of the screen (the part marked with the red border) to select the **Uninstall** button.

1.2 - To list applications in the ROM (Read Only Memory), select the **ROM** button:



The ROM is where the built-in/preinstalled, non-deletable applications reside; applications such as the Calendar, Contacts, Tasks, etc'.

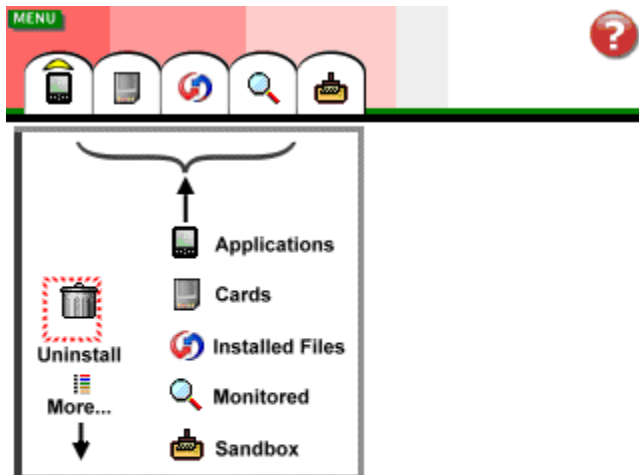
1.3 - Sort (Name or Size) the applications shown on the list by selecting the **Sort** button:



1.4 - Switch to the context-sensitive Help Mode by selecting the (?) (question mark) button:



1.4.1 Help Mode:



After switching to the **Help Mode**, you can tap (using your stylus) on any screen object or a menu command to see more information and tips on how to use. **Exit the Help Mode** by selecting/tapping the (?) button again.

1.5 List Navigation:

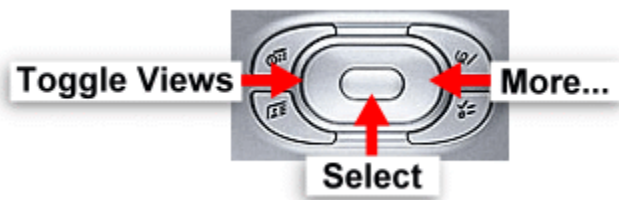
- You can scroll the list using the Page Up and Page Down Hardware buttons, or by using Graffiti or Keyboard to write the first letter of the item you wish to jump to.



- If you have a Sony Device with Jog Dial support, you can push the Jog down and use it to select/focus on individual items.



With a five-way-navigator device: Press the **Center** button to select items, **Right** to show/hide the Items List (see below) and **Left** to toggle between views (more on the different views can be found below).

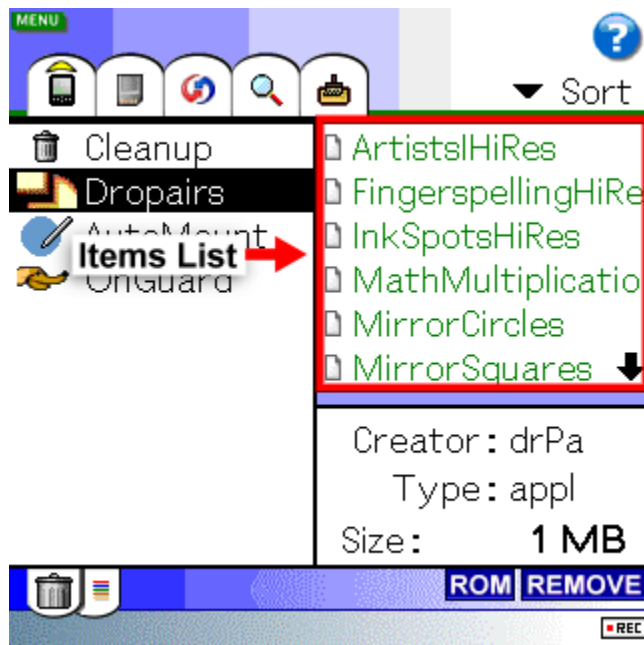


2. Items List

2.1 - To show the Items List and more details about the chosen application, select the following button:



2.1.1 - Items List:



The Items List displays the selected application's **associated and monitored items**.

2.1.2 What are Items?

Items can be one of the following:

- **Preferences:** Preferences/settings are relatively small pieces of data programs save that later can be easily accessed when needed. - Palm OS programs use preferences to quickly store and retrieve their settings at a later time.

There are two locations available for applications store their preferences: The Saved Preferences file and the Unsaved Preferences file. These files are maintained by the system and from a user standpoint, it doesn't really matter to which one of these files an application saves its preferences to.

Although the preferences applications save are usually small in size; if you have many preferences records left by old applications (usually remnants from Trialware software that were not completely deleted) it can considerably slow down your Palm Powered handheld.

- **Database Files:** All Palm OS specific files, accessible to applications on your device (pictures, documents, alarms, game level packs, etc'). Each database file on your device is uniquely identified by its Name, Creator ID and Type attributes (or a combination of the three).

- **Card Files:** Files that are stored on the expansion card and are not specifically designed to be solely used on a Palm Powered device (files such as Word documents, Excel workbooks, JPEG pictures, MP3s, Zip files, etc').

Associated Items are items that share the same Creator ID (the unique file identifier) with their parent application and will be deleted when using the default system delete function to delete the application.

Monitored Items can be one of the following:

- Items saved by the application under a different Creator ID than its own.
- Items grouped with application using the Group Files command (see below for more).
- Items installed alongside the application and do not share its Creator ID.

Monitored Items will be deleted from your device when using Uninstall Manager to delete applications, or by manually looking for them using applications such as Cleanup or misc. file managers.

By grouping all related files and preferences together, Uninstall Manager helps you to easily delete COMPLETE applications from your device and expansion card (besides failing to delete hidden/unassociated items, the default delete function will not search the card for related files).

2.1.3 Items List Legend / Colors

The items on the Items List can be quickly identified by their color:

Green: Database files.

Purple: Application files (regular database files that can be launched via the application launcher, create other files and save preferences).

Black: Preferences.

Example of preferences shown in the Items List:

 **Inch ID:0**

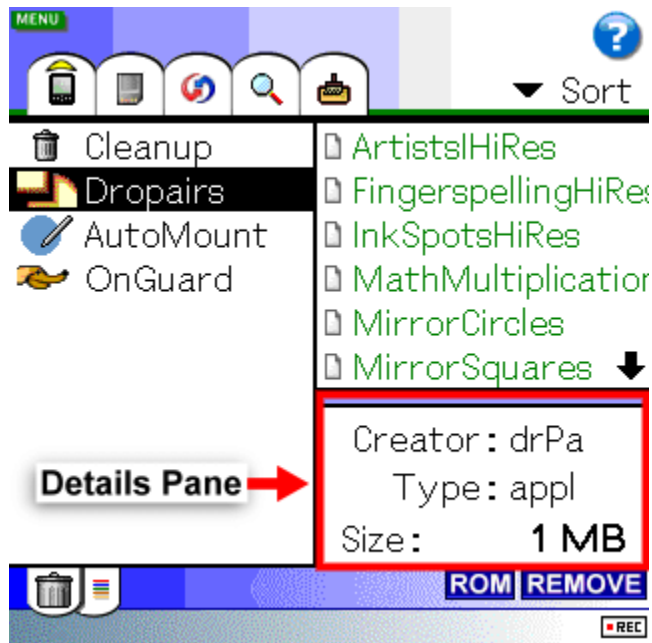
The item above represents a Saved Preferences resource with the ID of 0 (zero).

Notes:

- Database files in the ROM (read only memory) are underlined.
- When viewing applications; monitored items will be shown using bold fonts.

2.1.4 Details Pane

Selecting applications or items will display relevant information on the **Details Pane**:



The Details Pane presents information about to the selected application or item: Its **Creator ID**, **Type** and **Size**.

3. Deleting Applications

3.1 - Select the application you wish to delete and tap **Uninstall**

Check one or all of the following options and select **Delete**:



- **Application:** Delete the application file itself.
- **Monitored Files:** Delete all Files saved by the application under a different Creator ID than its own. This will also delete ALL RAM files grouped with the application using the Group Files command (see below for more).
- **Monitored Preferences:** Delete all Preferences saved by the application under a different Creator ID than its own.
- **Associated Files:** Delete all Files that share the same Creator ID with the application.
- **Associated Preferences:** Delete all Preferences that share the same Creator ID with the application.
- **Grouped Card Files:** Delete files on the expansion card that were grouped with the selected application.

More:

1. Search Card for Associated Files: When this option is selected, Uninstall Manager will search for files on the expansion card that share the same Creator ID with the application, allowing you to delete them.
Note: This operation could be time consuming depending on how many folders exist on the expansion card. You can abort the search by selecting **Abort** on the subsequent dialog.
2. Enable Undo: Create an uninstallation rollback for the selected application. The restore point/rollback will be created on the card and accessible using Northglide Undo.

- Select this option so that you can later change your mind and quickly restore the application back to your device.
- You must have NG Undo installed in order to use this function.

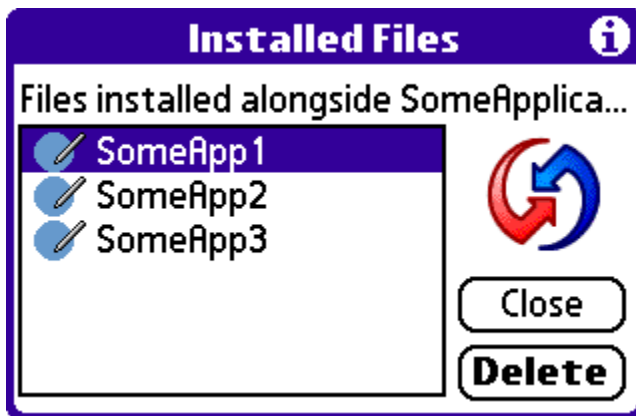
3.1.1 - In addition to the above:

Uninstall Manager will show a list and allow you to delete files installed alongside the selected application and are not associated with it.

This is particularly useful if the application you are deleting requires additional files to function (such as game levels, various database files, etc).

If you install (using the HotSync File Installer) a single application at a time, all of the displayed files can be safely deleted.

Example:



When deleting an application file using this dialog; you will be able to delete all of its associated items as well.

Uninstall Manager will check if the selected application has an associated directory on the expansion card allowing you to delete it.

- NOTE: For complete card cleaning, select the **Search Card** option.

Notes:

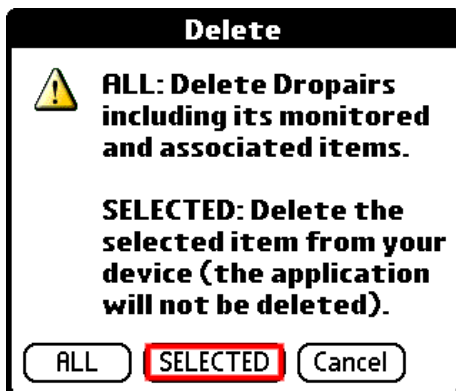
- If you only delete the application file itself (first check-box) and leave the other options unchecked; Uninstall Manager will later allow you to delete the application's associated and monitored items via the Monitored Items view (see below for more).
- When you delete an application and one of its Monitored Files or Monitored Preferences belongs to a different installed application (perhaps you manually grouped the file under the application that you're now deleting) you will see the following dialog:



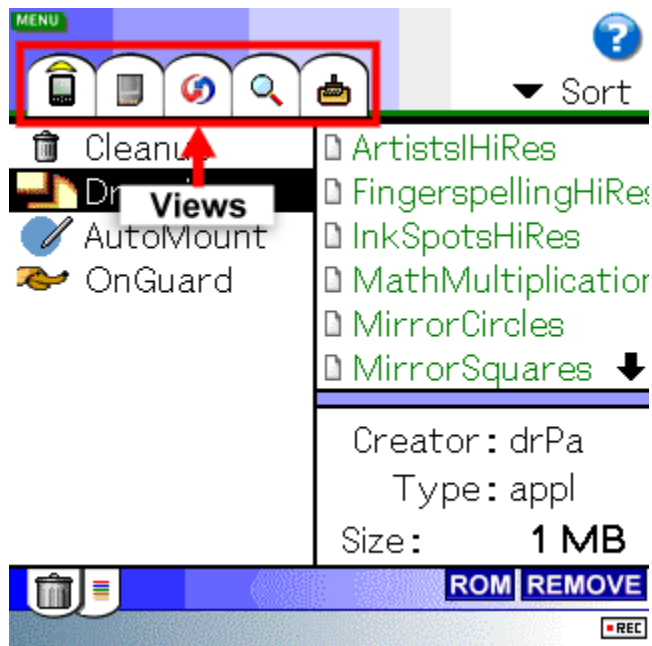
Select **Delete** to delete this item from your device even though it appears as if it belongs to a different application. Select **Keep** to keep this item in the memory or **Ignore** to delete the item and ignore/disable any future prompts when deleting the current application.

If the item is a preferences resource that belongs to one of the default PIM applications (Calendar, Contacts, Memos, etc) then it can be safely deleted since some applications deliberately use these apps' Creator IDs to hide preferences from your eyes. Only select **Keep** if you know that the file is an important file and you previously grouped it with the application you are uninstalling (see Group Files for more).

3.2 - To delete a single item; select the item from the Items List, tap the **Uninstall** button and then **SELECTED**:



4. Views



The view discussed until now was the **Applications** view.

4.1 There are 5 available views to select from:

4.1.1 Applications

View all existing applications in the main memory.

Selecting one of the applications will reveal its associated and monitored items.

4.1.1.1 Remove



Selecting an application and then **Remove** will remove ALL of its monitored items. You will also be given the option to add the application to the Ignore List (see below for more) so that any future items saved by this application will not be monitored and added to Uninstall Manager's log file. This will NOT delete ANY item from your device.

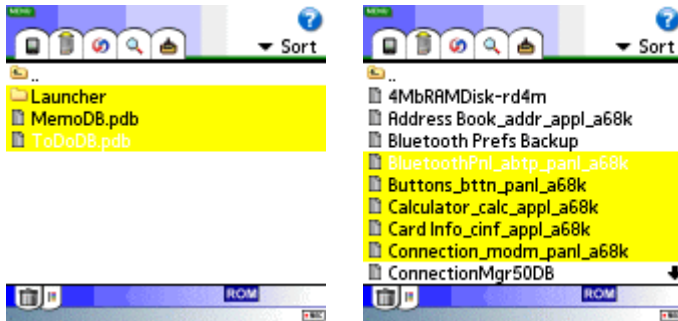
4.1.2 Cards

Browse installed memory cards on your device and find out which files on the card are associated with RAM based files and preferences.

By using the Cards view, you can delete files and directories from the expansion card.

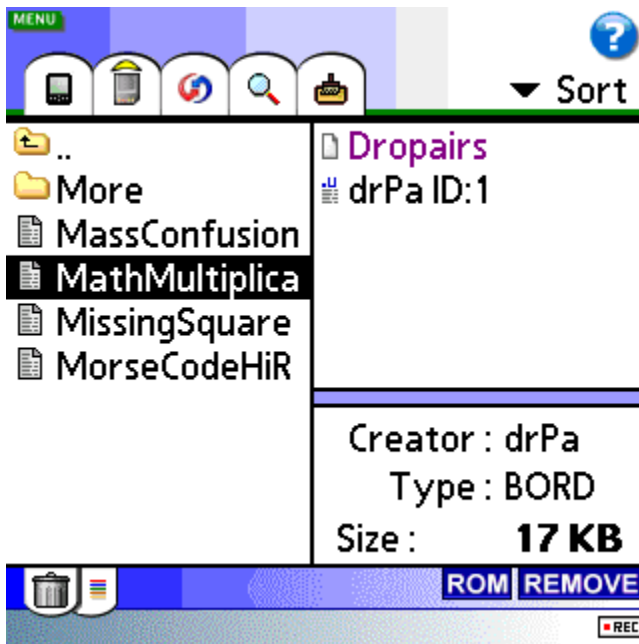
4.1.2.1 Delete Card and RAM items in bulk:

Select multiple files and directories to delete by tapping the icon on the left of each item. Selected items will be marked in yellow to indicate selection:



- **Note:** You can use this option to delete complete directories from the card, including all of their subdirectories and files.

4.1.2.2 Notes:



- Selecting a database file (a typical Palm OS database file, as opposed to regular file such as a MP3 music file) on the card; a list of all RAM based items saved under the same Creator ID as that of the file will be displayed. Selecting an application database (.prc) will display and let you delete its monitored and associated items in the RAM, as if it was selected from the Applications view.
- When viewing an empty directory, you can delete it by selecting the Uninstall button.

4.1.3 Installed Files

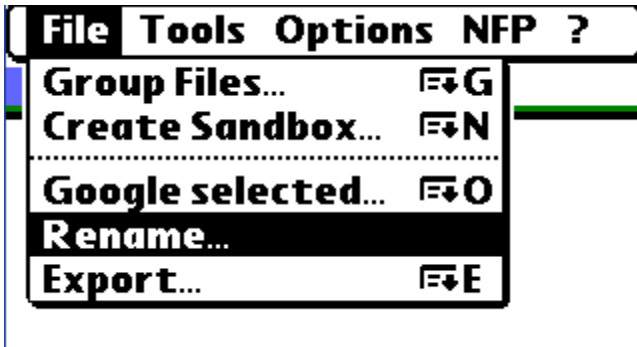
Uninstall Manager logs all files you download via the HotSync Manager to your device; may that be new programs, documents, pictures or books. Selecting this view will display groups of files organized by installation date.

4.1.3.1 Remove



Select a group of files installed on the same date or a single item from the Items List and then select **Remove** to remove the item(s) from Uninstall Manager's log file. This will NOT delete ANY item from your device.

4.1.3.2 Rename



If you wish, you can select a group of files from the Installed Files view and select the menu command **Rename** to change the group's name from the default name of installation date to a more descriptive one (e.g. "Some good game").


- **NOTE:** If you install another file after renaming the group on the same day, the name will revert back to the installation date. To avoid confusion, only change names on the following day.


4.1.3.3 Notes:

- The Installed Files view is a great tool to find out which files belong to which program and making sure all of the supporting files installed alongside a 3rd party application are deleted when you delete the application file itself.
- As a side note, you can also use this view to track your installation habits, and find out which day of the week is your favorite "new software installation" day.

4.1.4 **Monitored Items**


View ALL monitored items:

 Applications that saved items under a Creator ID which is different than their own Creator ID.

 Files grouped with applications using the Group Files command (card and RAM).

 Leftovers from deleted applications.

- Use the **Replace Default Delete** option to avoid situations where applications are not completely deleted and leave leftovers.

 Files installed using the HotSync Manager.

4.1.4.1 Remove



Select a group of monitored items (items that belong to the same application) or a single item from the Items List and then select **Remove** to remove the item(s) from Uninstall Manager's log file. This will NOT delete ANY item from your device.

4.1.5 **Sandbox**

View saved Sandboxes on the expansion card. You can launch a Sandbox by using this view and re-evaluate the software. See below for more information about the Sandbox Mode.

4.1.5.1 Launch Sandbox



Use the Launch Sandbox ("Launch SB") button to start the selected Sandbox.

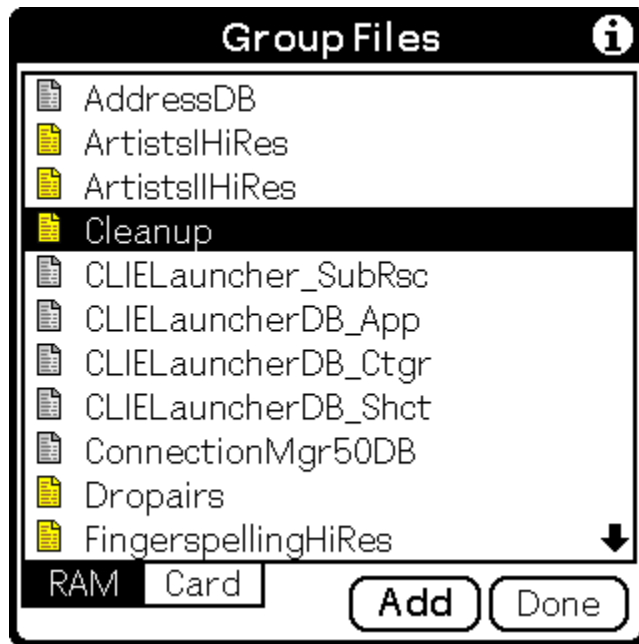
5. Menu

5.1 - Menu >> File

5.1.1 Group Files

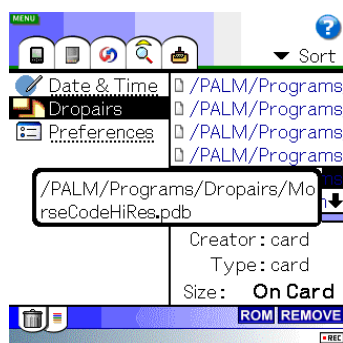
Select files to associate with the chosen application.

Use this option to group files under a specified application to allow easier uninstallations at a later date.



- Select RAM to group files in the RAM or Card to group files on the expansion card.
- If you're using **OnGuard Backup**, you can use this option to add different files to applications that are set for real-time backup
- To remove files: Switch to the Monitored Items view, select the file you want to remove and tap the **Remove** button.

After selecting an application and grouping card based files; the files will be listed on the Items List:



5.1.2 Create Sandbox:

Create a Sandbox on the card from the chosen application. Use the *Sandbox view* to launch the Sandbox. You must delete the application from the main memory (RAM) before you can launch the Sandbox.

5.1.3 Google Selected:

Open the installed web browser and search for the selected item using Google (for items selected from the Applications List or the Items List). This option is meant to be used when running from Palm Powered Smartphones (such as the Treo 680p, 755p, Centro, etc).

5.1.4 Rename

See the description/help for the **Installed Files** view above

5.1.5 Export

Export the selected application, file or group details into a Memo Pad record.

5.2 Menu >> Tools

5.2.1 Start Recording:

Beam files from other devices, use a file manager to copy files from the card, download files using your internet browser and press on ANY hardware button or return to UM, to list all the new files that were added to your device. You will then be able to quickly delete the files from your device and undo ALL changes.

Notes:

- The preferences files will be restored as well; new preferences records will be discarded.
- Recording Mode is similar to the Sandbox mode (see below for more), but it is not application-specific and does not allow you to 'save' the recordings.
- Running the Sandbox will cancel the recording.
- You can start the recording from anywhere using a special shortcut application that can be found in UM's zip file under the *More* folder.

You can also start the recording by selecting the following button:



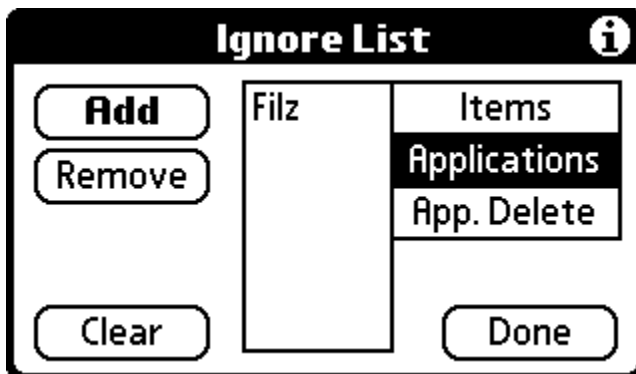
Press on any hardware button to finish the recording to see the new files that were added to your device:



- Select **End Recording** to keep the files (and preferences) on your device
- Select **Delete** to delete all newly added files and discard any changes to the Preferences files.

5.2.2 Ignore List (advanced):

You can use the Ignore List to instruct Uninstall Manager to ignore certain items: Ignore ALL items saved by specific applications, ignore specific items and ignore deleted applications when the Replace Default Delete option (see below for more) is selected.



Select **Items**, **Applications** or **App. Delete**; select the **Add** button and enter the Creator ID to ignore:

- **Items:** Files and Preferences saved under this Creator ID will be ignored (will not be monitored and added to the database).
- **Applications:** ALL items saved by the application with the specified Creator ID will be ignored.
- This option is especially useful to avoid monitoring applications that by definition; create or manipulate other databases with different Creator IDs (e.g. Filez, JackFlash, Resco Backup or any other backup program, etc.).

- You can add applications to the Ignore List without entering Creator IDs by selecting the desired application from the Applications view and tapping **Remove**.
- **App. Delete:** Deactivate the Replace Default Delete (RDD - see below for more) dialog when the application with the specified Creator ID is deleted.
 - This option is useful to disable the RDD dialog when launching card based applications using a shortcut or similar. For example: When using TealAlias to launch applications from the expansion card.

5.2.3 Delete 'a68k' Files:

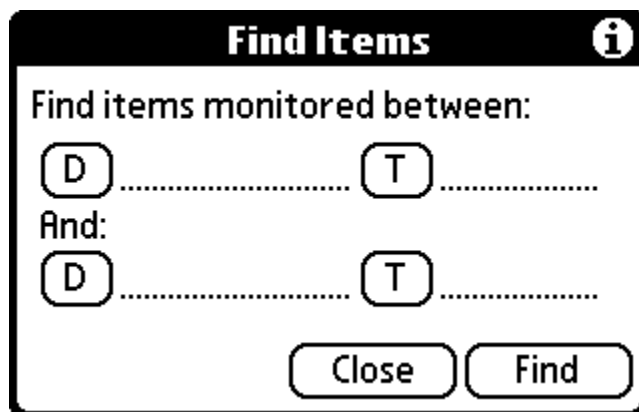
Use this option to delete a68k cache files.

The 'a68k' database is a special RAM-based database that the Palm OS creates for each application (68K) on your device. This database is created the first time the application is launched, and stays on the device until the application is deleted. Occasionally, you need to perform a soft-reset to delete a particular a68k database. Under certain circumstances an 'a68k' file can remain on your device. a68k files are small in size.

- Normally, you needn't worry about these files, but if you want the extra bytes you can use this option.
- After deleting a68k cache files, the Palm OS will recreate most of them; this is normal
- NOT ALL a68k files can be deleted.
- Technical note: Uninstall Manager will intentionally decrement the a68k database protect count by one. To delete additional a68k files, you can use this option repeatedly.

5.2.4 Find

Find ALL items monitored, installed or grouped between a specified time period.



The 'Find Items' dialog box has a title bar with the text 'Find Items' and an information icon. Below the title bar, the text 'Find items monitored between:' is followed by two rows of date and time selection. The first row has a date selector (D) and a time selector (T) with dotted lines for input. The second row is preceded by the word 'And:' and also has a date selector (D) and a time selector (T) with dotted lines for input. At the bottom of the dialog are two buttons: 'Close' and 'Find'.

Select the start date (**D**) and time (**T**) from the first row and end date and time on the second row. After selecting **Find**, the results will be displayed on the subsequent Search Results dialog.

5.2.5 Refresh Log

Remove non-existing items from Uninstall Manager's log file.

Note: The database will be automatically refreshed every 10th launch of the program.

5.2.6 Clear Log

Remove all monitored application records from the log/database file.

Note: Monitored data will be lost.

5.2.7 Beam Uninstall Manager

Use the IR to beam Uninstall Manager to another Palm Powered device.

5.2.8 Soft Reset

Soft-Reset your device. Technical Note: A soft-reset may be needed after uninstallations to remove Memory Features.

5.3 Menu >> Options

5.3.1 Toggle Icons

Toggle application icons in the Applications List ON or OFF.

5.3.2 Show/Hide Hidden Apps

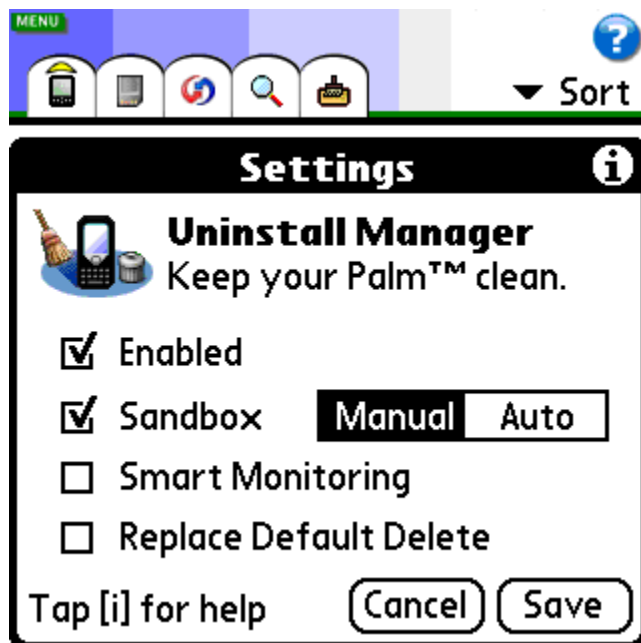
Show/Hide applications that are not visible in the application launcher.

5.3.3 Default Settings

Reset all settings to initial values.

5.3.4 Settings

Select the Settings command to show the Settings dialog:



- **Enabled**

When this option is checked, Uninstall Manager will monitor applications for writing preferences and files under a different Creator ID. It is highly recommended keeping this option checked.

- **Sandbox** (see below for more)

Turn the Sandbox mode ON or OFF

[Auto] - The installed application will be automatically launched inside the Sandbox once the HotSync process is complete.

[Manual] - Running the application inside the Sandbox will require confirmation.

- **Smart Monitoring**

If you're using applications that save files/preferences on top of other applications (such as hack-like applications and other applications that are 'always on' e.g. McPhling); having the Smart Monitoring option selected will minimize monitoring mistakes. Uninstall Manager will try to determine if a monitored item (a hidden file/preferences) that was just created belongs to a different application and will not add it to its log file.

When Smart Monitoring is selected, Uninstall Manager will not monitor file creations by file managers when saving files and other applications that manipulate RAM based databases. Select Smart Monitoring for a less verbose log file.

- **Replace Default Delete (RDD)**

AVAILABLE IN THE REGISTERED VERSION

When the **RDD** option is selected, you can keep deleting applications from your default application launcher and still make sure your device stays clean.

Whenever you normally delete an application, Uninstall Manager will be called and you will be given the option to view and delete any hidden items saved by the application, files installed alongside it, directories on the expansion card that belong to this application and any other items grouped with that application.

With **RDD** enabled, you don't have to use Uninstall Manager itself to completely delete applications. Keep deleting applications using your default application launcher (ZLauncher, Launcher-X, SilverScreen, etc).

5.4 Menu >> NFP (NeatFreak Pack)

Launch other NeatFreak Pack programs, if installed to the main memory.

As with Uninstall Manager, except Cleanup, all other NeatFreak Pack programs *MUST* be installed to the main memory (RAM) and not to the expansion card in order to function:

- **Launch Cleanup**
- **Launch OnGuard Backup**
- **Launch Northglide Undo**

6. Sandbox

Keep applications away from your device before you decide to keep them!

When using the Sandbox mode to install new applications, you can quickly evaluate and completely remove them if you choose to. You can also keep multiple Sandboxes on the expansion card to quickly retest applications in the future.

When you download a **NEW** program via the HotSync manager, Uninstall Manager will show a list of all files installed alongside the application; when you choose Start, the program will be launched.

When you finish evaluating the program, tap the **Home** icon; Uninstall Manager will list files installed alongside the program, as well as files created when it was running. You will then be able to completely uninstall the program or keep it on your device.

For more, please see the Sandbox Quick Start Guide

Sandbox Notes:

- When deleting a program from within the Sandbox dialog; in addition to its associated files, ALL preferences/settings saved by the application will be deleted.
- The Sandbox will not work when upgrading to a newer version of an already installed application. See FAQ for more.
- You should install a SINGLE application at a time when using the Sandbox.
- You can install several files at once, but should not install more than one application when you want to use the Sandbox mode.
- You can use the Recording Mode (see Menu >> Main above) to quickly undo ALL changes to your device. Unlike the Recording Mode, the Sandbox mode is application-centric and allows you to keep applications locked inside isolated environments on the expansion card.