



# Picxel Proviever

Palm OS 5.4 - Treo 650, LifeDrive, Tungsten E2, Tungsten TX

---

User Guide

Copyright © Picxel 2005

Neither the whole nor any part of the information contained in, or the product described in, this document may be used, sold, transferred, adapted or reproduced in whole or in part in any manner or form or in any media except with the prior written permission of the copyright holder.

## **Picssel Proviever**

Palm OS 5.4 - Treo 650, LifeDrive – **User Guide**

---

The product described in this document is subject to continuous development and improvement. All particulars of the product and its use contained in this document are given by Picssel in good faith. However, the content of this document is provided "as is", without warranties of any kind with regard to its accuracy or reliability, and specifically excluding all implied warranties, for example of merchantability, fitness for purpose, title and non-infringement. In no event shall Picssel be liable for any special, indirect or consequential damages whatsoever resulting from loss of use, data or profits, arising out of or in connection with the use of this document. Picssel reserves the right to revise the document or withdraw it at any time without prior notice.

No licence is granted (nor any rights of whatsoever nature granted), express or implied, to any intellectual property by this document. Picssel, the Picssel cube device, IFV, Picssel Proviever and ePAGE are trademarks or registered trademarks of Picssel Technologies Ltd.

Throughout this document, the trade names and trademarks of some companies and products have been used. No such uses are intended to convey endorsement of or other affiliations with the document.

This document is proprietary to Picssel.

Document number PICSEL-EUG-0048-B

Date: February 2006



Picssel Headquarters:

Titanium House  
Braehead Business  
Park  
Kings Inch Road  
Glasgow, G51 4BP,  
UK

Tel:  
+44 (0) 141 885  
5588

Fax:  
+44 (0) 141 885  
5599

UK : Malaysia : Japan : China : Korea : USA

For contact details of global offices, please refer to the Picssel website at  
<http://www.picssel.com/>

# Contents

<b>Introduction</b>	4
<b>Installing Picxel Proviever</b>	5
<b>Getting Started</b>	6
Panning & Zooming a Document	7
Opening from My Documents	8
Using Picxel Proviever	9
Document View	9
Reflow Mode	10
Folder View	11
History View	13
Other Options	13
<b>Configuring Picxel Proviever</b>	14
'Preferences'	14
Acknowledgements	16
<b>Questions &amp; Answers</b>	17

# Introduction

Picse! Proviewer is a revolutionary product for viewing all your documents and email attachments on hand held devices. Its leading edge technology allows you to view common documents and images on your handset without any loss of content, and in crystal clear clarity. Picse! Proviewer delivers new levels of satisfaction to your document viewing experience, as it enables powerful real-time zooming and panning of content in one easy to use environment.

Central to Picse! Proviewer is its ability to read files from desktop environments in their original format, which means no conversion, compression or compromise. Picse! Proviewer supports Microsoft Word, Excel and PowerPoint, Adobe PDF and image formats such as JPEG, GIF, and PNG.

Picse! Proviewer's easy to use interface makes navigating documents a joyful experience on small screens. Simply by touching a button or using your stylus, you can instantaneously pan (scroll) your document in any direction. You can also rapidly zoom in or out to view intricate details or overviews – the speed and responsiveness of the system has to be seen to be believed! Even moving to the next page is as simple as turning a leaf in a book.

Picse! Proviewer integrates with your mail reader to display attached or locally stored documents painlessly; making your life so easy you'll wonder how you ever lived without it!

# Installing Picse! Proviewer

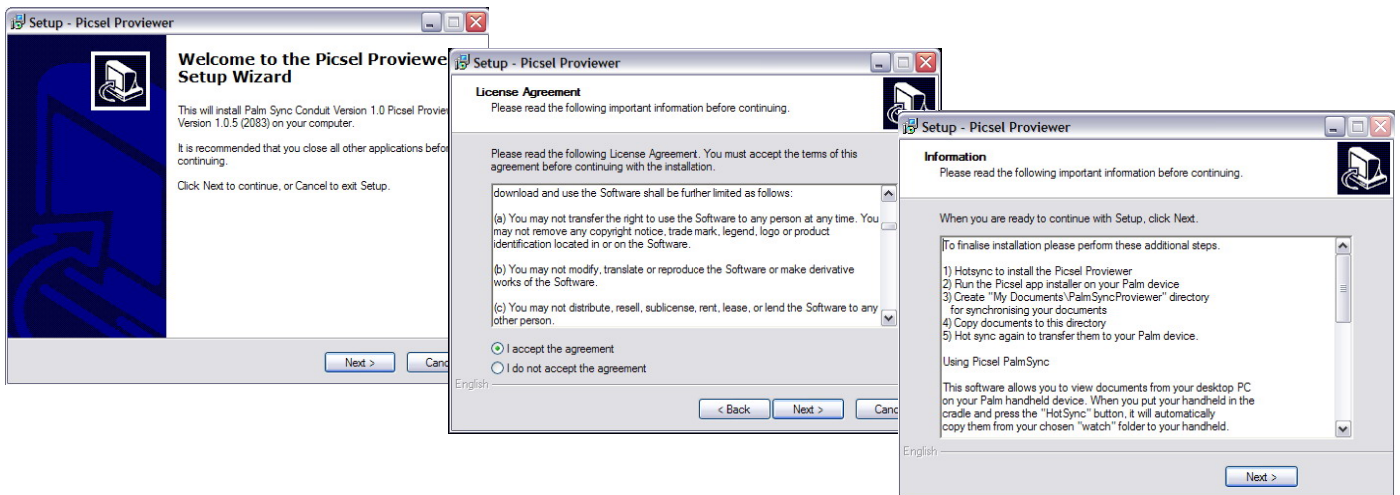
Below is a step by step guide for easy installation of your new Picse! Proviewer Software.

Win32 installation.

-----

1. Click the download link
2. Extract the installer exe from the zip file.
3. Hotsync the device you will be installing Proviewer on
4. Start the installation program on your PC
5. Please follow any on screen installation instructions.
6. At the end of the installation Hotsync your device again.
7. On the Palm device tap Picse! Installer

When this operation is complete, Picse! Proviewer will automatically begin.



Optionally you can install the setup prc file using Palm Deskop,

Macintosh installation

-----

1. Click the download link
2. Extract the Proviewer prc file from the zip file
3. Use the Palm Desktop to hotsync the prc to the Palm device
4. On the Palm device tap Picse! Installer

When this operation is complete, Picse! Proviewer will automatically begin.

# Getting Started

Now that you have a Palm Device powered by Picse! Proviewer, you're ready to see it in action! Switch your device on and go to your main menu and you should see a screen like this:



*Treo 650 Programs folder*

*LifeDrive Programs Folder*

Tap the '**Picse! Proviewer**' icon to launch the application. Once it is running, you will see the default document; a help page.

## Picse! Proviewer

Picse! Proviewer lets you read almost any document on screen.

To move through this document, 'pan' the page by stroking your pen over the screen in any direction, like moving paper around with your hand. To zoom in and enlarge the view, tap the middle of the screen, let go and then quickly touch and hold your pen on the screen again and stroke it up or down.

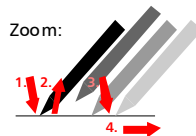
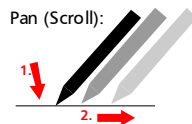
Picse! Proviewer handles many document types including PDF, MS Word, PowerPoint, Excel, JPEG images, PNG images, plain text, and

*Treo 650 Default Document*

# Panning & Zooming a Document

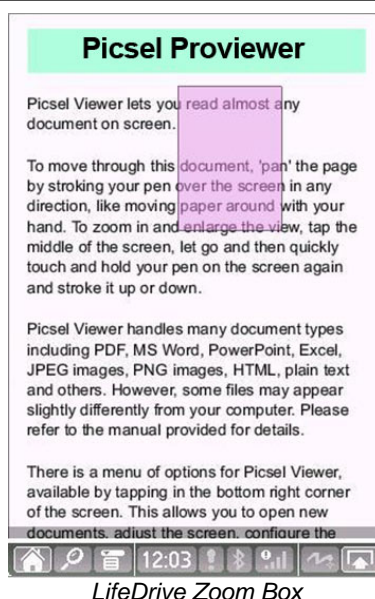
The document you wish to see is often larger than the space available on the screen. There are two ways to see more of it.

To pan (or 'scroll') to a different part of the document, simply stroke your pen across the screen in the direction you would like the page to move. To pan the page up, touch and hold your pen somewhere near the middle of the screen and draw a line towards the top, then take your pen off the screen. You can do this repeatedly so that you can view any size of document. Further, you can 'throw' the document across the screen, and it will continue moving after you have released the pen. This gives you time to start another stroke. This inertia can be used to save time while you pan around the document.



You can also zoom and magnify the document size, so that more or less of it is visible. The tap-and-stroke gesture for this is to tap your pen briefly near the middle of the screen then touch and hold it again in the same place (a "double-tap"). Now, stroke your pen up to zoom in, or down to zoom out. Release your pen when you reach the scale you like. Using this, you can view small print details on diagrams, or can get an overview of a whole page.

A further method for zooming into a specific area of the document is called 'Zoom Box'. Use the same double-tap-and-stroke gesture as above, starting at the top-left corner of the area you would like to fill the screen. However, you should then stroke your pen to the right instead of vertically. A coloured box will appear showing the area that will be enlarged. Move your pen to make this cover the area of interest, and release it. The area within the coloured box will zoom to fill the screen. You can also select "Zoom in" and "Zoom out" from your application drop down menus.



If you have a Palm LifeDrive then you also have the option of using the shortcut keys listed besides your options in the drop down menus. For example to zoom in you can draw a tick followed by the letter "Z" in the writing input area; and Picse! Proviewer will resize your document. Similarly there are shortcut keys listed for nearly every option you have in your drop down menus.

While you hold your pen down on the screen, the quality of the image may be poorer. This is to make the zooming more responsive to your movement. When you release your pen, the quality will improve.

## Opening from My Documents

You will probably want to view documents of your own. One of the best ways of doing that is to copy them from your own desktop computer. Perhaps you have a PowerPoint presentation or PDF document which you'd like to copy to your hand-held device. To do this, connect your Palm device to your desktop machine. Once connected, documents can be transferred to the device using the "PalmSyncProviewer" folder within "My Documents". Please remember the folder that you copied the files to.

Alternatively, documents can be transferred to an external memory card, by inserting it into your desktop computer and using Windows Explorer to copy the files. Once transferred to the card and re-inserted into the Palm device, Picse! Proviewer can read documents from the card, named "SD" in the folder view.

To look at files on your device, tap "Open File" from the menu. Tap your pen on the folder containing the documents you wish to view, then choose the document from the list that appears. After a moment it will appear on screen. You can move it around and zoom in or out, using the pen gestures you learned earlier.



# Using Picxel Proviever

The main way of controlling Picxel Proviever is by using the device drop down menus. By using the menu options, History, Open File, Preferences, Back, Forward, Reload, Next Page, Previous Page, First Page, Last Page, Rotate Screen, Reflow, Fit Page, Zoom In and Zoom Out.

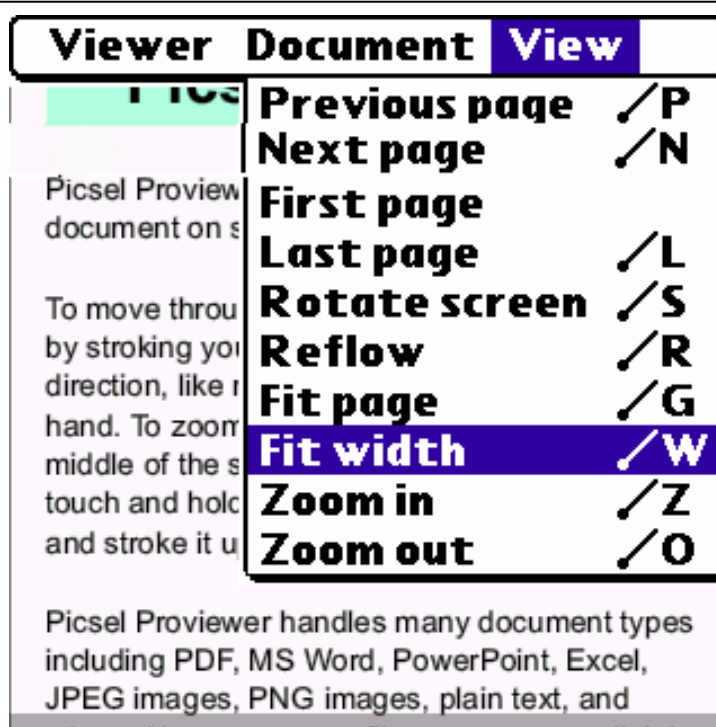
## Document View

Most of the time, you are looking at the '**Document View**', in which you see the content of your chosen document. There are also the Folder and History views. If you want to return to the Document View when you are in a different mode, you can choose the '**History**' from the drop down menu under "Folder" and choose a previously viewed document or continue to choose a new document.

While in document view, you can pan (scroll) around the page simply by stroking your pen over the page in the direction you want it to move. To zoom in, briefly tap the screen near the middle then press and hold it in the same place. Now, stroking upwards will zoom in and stroking downwards will zoom out. While you are zooming or panning, the document will appear less clearly, and will then 'sharpen up' when you release the pen. This is perfectly normal, and the clarity and speed with which the document moves are part of the unique power of Picxel's ePAGE technology.

There are several ways to move to a different page in the document. Firstly, you can draw a 'page flick' stroke across the bottom of the screen, as if you were holding a page of a book (start in the middle at the bottom, then stroke to the left to reach the next page, or to the right to return to the previous page). Secondly, you can tap the bar at the base of your screen and then use the thumbnail copies of pages or the scroll bar along the bottom to find the page you want.

The scroll bar works like one on a normal desktop PC, and you can tap one of the small 'thumbnail' pages to view it, as shown in the next diagram. You can also use your menu and from the "View" drop down list select Previous Page, Next Page, First Page and Last Page.



*Treo 650 The navigation controls which appear in a multi-page document.*

The scroll bar along the bottom of the screen moves between pages and can be moved by stroking your pen over the box to move through the thumbnails for all of the pages of the current document. The arrows at the end of the scroll bar move directly to the first and last pages of the document, respectively. The page scroll bar is only useful for multi-page documents, which do not include HTML pages or pictures.

You can also return to the previous document you viewed by pressing your menu button and selecting "History" from the drop down menu and selecting the document you wish to view.

Picse! Proviewer can also scale the document automatically to fit on the screen with the 'Fit page' option in your menu".

The visible part of the current page is shown on the current page thumbnail as a coloured area which you can also move around with your pen, should you wish to.

## Reflow Mode

Many documents contain plain text which would normally be printed across a full page width, but which is too small to read when a whole line is shown. Picse! Proviewer incorporates 'Reflow Mode' where text is re-arranged to fit on the width of the screen. To activate Reflow select the option from the "Document View" menu option. This function only operates with Word and Text files.

Within Reflow Mode, very large and very small sizes of text are made more similar. Large tables are laid out in a single column, although small tables which can be shown completely are left untouched. Pictures are resized to fit within the width of the screen. A number of other minor changes are made to enhance your viewing experience, and to reduce the amount of space wasted by unimportant content.

You can zoom in to examine pictures or other items more closely, and after zooming, you can then pan sideways up to the edges of the document. There is not normally anything else to see to the left and right, so panning sideways is prevented.

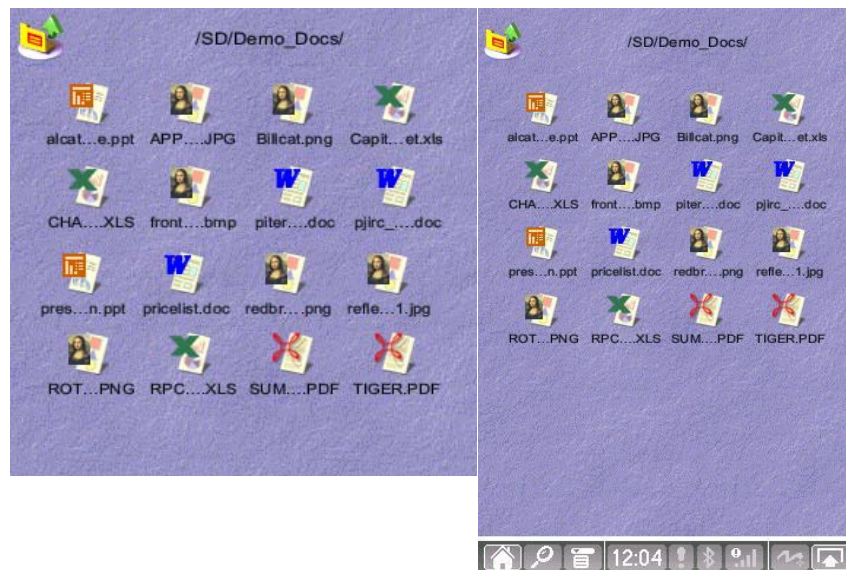
## Folder View



*Up-Folder icon*

While you are choosing stored documents, you are in the **'Folder View'**. It allows you to navigate folders (or 'directories') and select documents, taking you back to the Document View. To see this press your menu button and choose "Open File".

The name of the current folder's path location is shown at the top of the screen, and you can go to the folder above that by tapping the **'Up-Folder'** icon in the corner. You can also move to a higher folder by clicking on its name, to the right of the **'Up Folder'**.



*Treo 650 Folder View*







*LifeDrive Folder View*

The folders, which may contain documents, are shown in yellow with tabs in the corners. Documents look like sheets of paper in various other colours, depending on their type. You can tap a folder icon to see its contents, or tap a document icon to open it with PicseL Proviever. Documents with plain white icons are not supported, and will display an error message if you try to view them.

In the Folder View you cannot access documents on other computers, nor can you make any changes to them. The name of the top-most folder is '/'

from where you can reach My Documents, and any sub-folders you may have created.

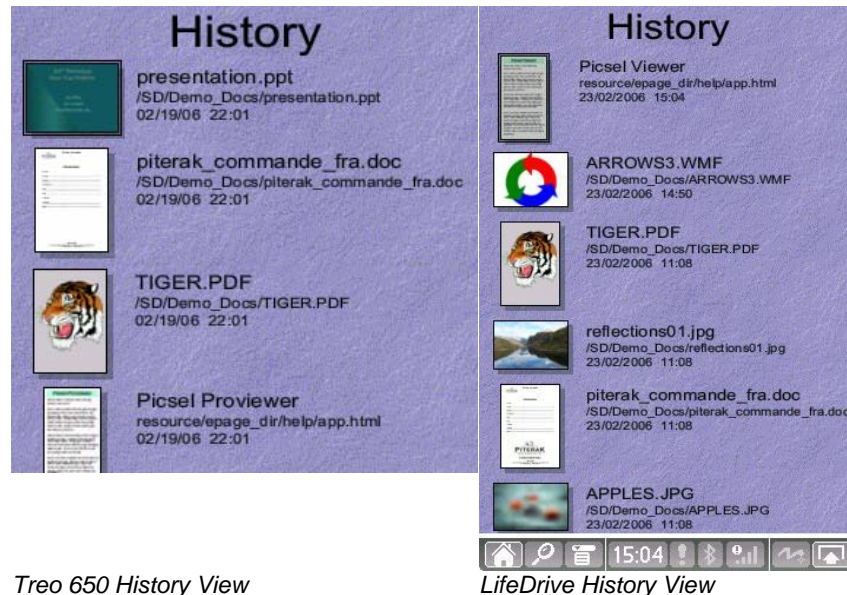
The following document formats are supported:

Document Type	Icon
Adobe PDF	
Microsoft Word	
Microsoft PowerPoint	
Microsoft Excel	
Plain Text	
Pictures	

You can also select files and folders in the folder view using the four-way direction button (or equivalent) on your device. You will see the name of a document highlighted as you move this around. To view a document or explore the contents of a folder, press the middle of the four-way button.

# History View

Opening many documents, searching through crowded directories can be disconcerting; you may want to return to one you saw earlier. The '**History View**' shows you previously visited documents as a small thumbnail-image with name, location, and the last date of viewing. To see this view, press your menu button and select '**History View**'.



*Treo 650 History View*

*LifeDrive History View*

To return to any of the documents from the history view, tap the small picture of that page twice. After only one tap the thumbnail has a border around it to indicate that you have selected it.

Once you have visited a large number of pages, the history view will record more than it can display on screen. You can pan through the history view using the same pen gesture of stroking upwards that you used earlier.

Documents will remain on the history list until a certain number of days have passed. You can control this period in the preferences, as described later.

## Other Options

The '**Reload**' option in the drop down menu reloads your documents as they originally appeared on screen. So if you resized them it will reload your document again into the Picse! Proviewer.

The '**First page**' option in the drop down menu when selected will take you to the first page of a multi-page document.

The '**Last page**' option in the drop down menu when selected will take you to the last page of a multi-page document.

The '**Back**' option in the drop down menu when selected will go back to the last item you were looking at and it will do this every time you select it, much like the back button on an Internet browser. Similarly the '**Forward**' option when selected takes you forward to a document you have already viewed.

## Configuring Picse! Proviewer

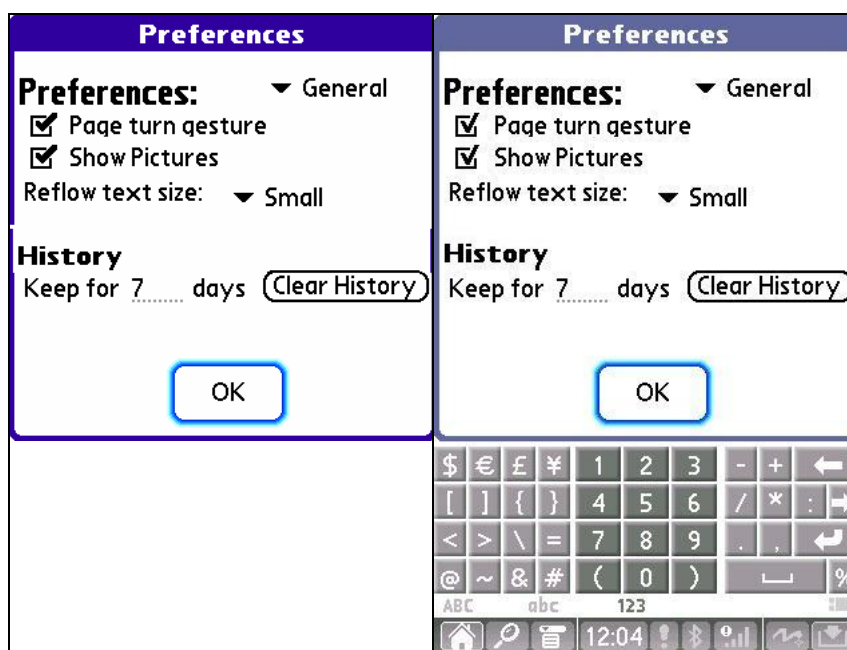
There are a number of choices you can make about the way Picse! Proviewer works, to make your viewing experience more pleasant. First among these is the screen orientation. You may prefer to read lines of text across the screen more clearly, or you may wish to view a whole page at one time. To make the best use of the shape of your device's screen, the viewer can rotate its display by 90° if you select "Rotate Screen" from your drop down menu. When you do this, the document and other views are rotated, but not dialogue boxes or any other programs running on your device. You can reselect this option to change your screen orientation back to its original position.

There are also a number of further options which can be set using dialogue boxes. To see these, choose the 'Preferences' from your drop down menu. The preferences screen contains five options, called 'General', 'Page turn gesture', 'Show Pictures', 'Reflow text size' and 'History'.

To select any of the options in the dialogue boxes, tap your pen on the triangular symbol to the left of the menu to open a drop down menu or tick and un-tick the selection boxes. When you are finished, tap the 'OK', as you would for other programs on your device.

### 'Preferences'

Select the 'Preferences' option in your drop down menu to see various options, as shown.



'Preferences' on the Treo 650

'Preferences' on the LifeDrive

'General' lets you move between pages in a document by flicking your pen across the bottom of the screen. To move to the next page, touch your pen at the middle bottom of the screen, then draw a stroke to the left. To return to the previous page, draw a stroke to the right.

**'Page turn gesture'** can be switched off if you do not wish to use this particular feature. The "Page turn gesture" allows you to flick your pen tool across the base of your screen as though you were flicking the pages of a book and in turn moves you through pages in your document.

**'Reflow Text Size'** sets the average size of text in Reflow Mode, described above. This is varied slightly by very large or small document text.

**'Keep History for ... days'** specifies the period after which the thumbnail pictures and descriptions of pages are purged from the history memory. Each thumbnail occupies part of your devices limited memory, but also allows you to see what you were looking at not just earlier today, but some time ago. To edit the number here, tap the Up or Down spin buttons on the right, or tap in the box then open the on-screen keyboard and type your new number (between 0 and 28 days). If you reduce the number, old documents will be removed from the history immediately where appropriate. Alternatively, tap on the 'Clear History' button to remove all stored history entries.

**'Show Pictures'** can be switched off to reduce network traffic, which may be useful with mobile Internet access where you pay for data transferred. This option only affects PDF documents.

# Acknowledgements

Picse! are grateful to the developers of various libraries used within this product, who have asked that the following text be shown here.

libjpeg: This software is based in part on the work of the Independent JPEG Group, copyright (C) 1991-1998, Thomas G. Lane. All Rights Reserved except as specified.

libpng: libpng versions 1.0.7, July 1, 2000, through 1.2.2, April 15, 2002, are Copyright (c) 2000-2002 Glenn Randers-Pehrson

zlib: Copyright (C) 1995-2003 Jean-loup Gailly and Mark Adler. This software is provided 'as-is', without any express or implied warranty. In no event will the authors be held liable for any damages arising from the use of this software.

The JavaScript interpreter used by Picse! is part of the Mozilla project and is covered by the Netscape Public License. Its source code is available under those terms.

This software is partly derived from the RSA Data Security, Inc. MD5 Message-Digest Algorithm.

Copyright (c) 1999-2002 Ralf S. Engelschall [rse@engelschall.com](mailto:rse@engelschall.com). This product includes software developed by the Apache Group for use in the Apache HTTP server project (<http://www.apache.org/>).

This software contains time manipulation code which is copyright 1994-2002 FreeBSD, Inc. All rights reserved.



# Questions & Answers

We hope that your experience with Picse! Proviewer is satisfying and enjoyable. However, a number of questions may arise that have simple solutions, such as the following.

## **Why is there no document on screen?**

Picse! Proviewer may have failed to open a document and given you a blank screen. The simplest solution is to restart your “Picse! Proviewer” and use the folder view to open a document.

## **Picse! Proviewer has run out of memory. What do I do?**

Picse! Proviewer has to load each document into memory and process it, in order to display it on screen. If your device is running very low on available RAM, then it may be unable to display some documents. You can switch off ‘Show Pictures’ in the preferences which may help. Otherwise, the only solutions are to delete some files or applications from memory or to view a different document.

## **Why does my document appear in another application, instead of Picse! Proviewer?**

If you open a document from the device File Explorer, it will use the default application for that file type. Please see the ‘Files’ section of the preferences, described above, for details.

## **Why are some characters not appearing in my document?**

Picse! Proviewer uses the fonts installed on your device, which may not include certain symbols that your documents use.

## **Why do the fonts look different from my PC?**

Picse! Proviewer uses fonts installed on your device which are often similar to those on your PC, but may not be identical. Mobile devices normally have fewer fonts than PCs, so Picse! Proviewer sometimes has to substitute them for the nearest it has.

## **How can I get the most out of using Picse! Proviewer?**

Practice the gestures for panning and zooming, as well as the page navigation to other pages, in order to get where you want quickly and accurately.

If you are finished with Picse! Proviewer, you can exit it from by pressing the “Home” key at the bottom left hand side of your screen.

Also rotating the screen orientation is easy and convenient for viewing documents at different times depending on your wishes.