

TealGlance User's Manual



Program Version 3.30
Last Updated: March 8, 2001

Table of Contents

Description	1
Contents	1
Installing	1
Overview	2
Using the Program	2
Setting Options	3
Options	3
Datebook Options	5
ToDo Options	5
Advanced Options	8
Brainforest Options	9
Appendix A - Troubleshooting	10
Installing and Running	10
Other questions	10
Appendix B – Compatibility	11
Appendix C - Revision History	13
Appendix D - Credits	13
Appendix E - Contact Info	14
Appendix E - Products	14
Appendix F - Registering	15
Appendix G - Disclaimer	15

Description

Thank you for trying *TealGlance*. This application gives pops up a 'quick view' window at power-up showing commonly-needed information such as:

- Day of Week
- Date
- Time (Digital)
- Time (Analog)
- Battery Level Indicator
- Upcoming Datebook appointments
- Unchecked Top ToDo list items

TealGlance is fully configurable, providing options for adjusting delay time, ToDo category, display mode, and Time and Date format, and optional automatic backlight activation.

Contents

This archive contains the following files:

Program files:

TEALGLNC.PRC	The TealGlance program file
CALLGLNC.PRC	The <i>CallGlance</i> activating application, appears as 'Teal Glance' in the Applications screen
TEALMSTR.PRC	The <i>TealMaster</i> System Extensions Manager

Document files:

GLNCDOC.PDF	This document in Adobe Acrobat (PDF) format
GLNCDOC.HTM	This document in HTML format (sans images)
GLNCDOC.PRC	This document in TealDoc format
REGISTER.HTM	TealPoint Registration form in HTML format
REGISTER.TXT	TealPoint Registration form in text format

Installing



TealGlance uses the Hackmaster-compatible Palm System Extensions standard. This is a safe and standard way to add and manage extended system functionality on the PalmPilot. We've included the non-expiring trial version of our own extensions manager TealMaster, but you may use Hackmaster (shareware) or X-Master (freeware) as well.

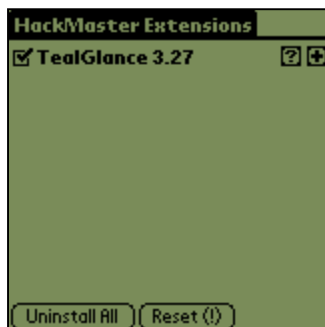
Use the PalmPilot installer to install the program file *TEALGLNC.PRC*, *CALLGLNC.PRC*, and *TEALMSTR.PRC*, if you do not already have it or another system extensions manager. on your machine. The PalmPilot installer can be found as an icon on the left hand side of the Palm Desktop program. Instructions on how to use the PalmPilot installer are in the PalmPilot Handbook that came with your Pilot, PalmPilot, or WorkPad.

Important note

Before updating or deleting any system extension like TealGlance, be sure to disable the application first in the TealMaster/Hackmaster control screen. If you fail to do so, your TealGlance will not operate, and Hackmaster will get confused until you disable and re-enable TealGlance a few times.

Overview

TealGlance comes in two components. The main part is a system extension, which is activated from within TealMaster. This component can be configured within TealMaster to pop up the TealGlance display window on power up or with a **double command stroke** (see below). To turn on TealGlance, simply click on the TealMaster icon in the applications launcher, and click on the checkmark next to the TealGlance entry in the Hacks list.

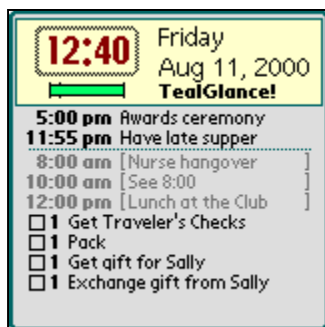


The second component, CallGlance, will appear on your applications screen as a standard program labeled 'Teal Glance' (with space). CallGlance provides an alternate way to activate TealGlance, keeping its display up indefinitely until you start another application. This makes it suitable for staying on in the cradle as a constant time/task display. CallGlance requires the main TealGlance component to be installed and activated to function.

Once TealGlance is activated, you will be able to configure it to quickly and neatly display the information that fits your individual needs.

Using the Program

By default, *TealGlance* is automatically activated when you turn on your Pilot using the green power button. The information window will pop up and disappear after a configurable time limit. To make the window disappear sooner, just click anywhere with the pen or press one of the buttons on the Pilot, such as the up and down scroll buttons. If you hold down the pen, TealGlance will stay on screen until you release it.



As an alternate way to bring up TealGlance, use the CallGlance program (appears as *Teal Glance* in the App launcher). The display will come up and stay on screen, updating itself every 30 seconds until another application is selected.

To configure TealGlance, activate TealMaster and click on the plus (+) button next to TealGlance. Here, you can adjust the format of the pop-up window, set the time it stays on screen, and adjust many other options. Note that on a color Palm, the current version of Hackmaster does not display the (+) button correctly.

Additionally you may enter a keyword you receive when you register the product to remove the 'Please Register' text in the popup window. When you enter the password, the entry line in the config screen will still remain as it is, but you should not longer get the *Please Register* messages.

Datebook events appear in chronological order by start time, and are included up to an hour after start time (in case you're running late), or until the stop time has passed, whichever is latest.

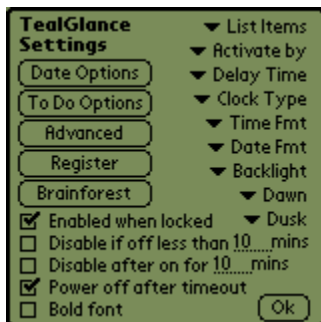
Tomorrow's events are shown, if selected and there is room, after today's event separated by a horizontal line and enclosed in brackets.

Unchecked ToDo items in the selected category are shown sorted by priority. If you are using the Alt-ToDo feature, the current category can change depending on the time and day of the week. See options below for more info.

You may click on an entry to go to either the ToDo application or the Datebook application. This feature requires that your hardware buttons have the default mappings to the standard ToDo and Datebook apps. You will go to the correct day if clicking on a datebook item, but when going to the ToDo list application, the current category may not reflect the item you chose. You may also click on a checkmark box on the TealGlance screen to check-off a listed ToDo item, provided you are not activating TealGlance from within the ToDo application.

Setting Options

Set options by running TealMaster and clicking on the '+' key next to the *TealGlance* listing.



Options

The following options may be changed within the config screen.

List Items

Sets what to show in display area below time and date. Choices are Upcoming Datebook Appointments, ToDo items, None, or Both.

Activate By

Selects combinations of alternate ways to bring up TealGlance.

Power button:

When PalmPilot is turned on with the green power button

Application buttons:

Power up using the 4 application buttons on the pilot

Double-command stroke:

Doing the command graffiti stroke (a slash from lower left to upper right) twice in succession.

Delay Time

Time Popup window stays up before automatically closing

Time Format

Format in which time appears

Date Format

Format in which date appears

Clock type

Choose Analog, Digital, Compact, or None (new for version 2.60)

Backlight Display

Allows automatic activation of backlight (if available) at power-up either all the time or only between dusk and dawn.

Dawn

Set dawn time (for backlight option above).

Dusk

Set dusk time (for backlight option above).

Enable when Locked

Set whether TealGlance is activated even if Pilot is locked.

Disable if off less than xxx mins

Doesn't come up if PDA is turned off less than a specified number of minutes

Disable after on for xxx mins

Set a minimum time between pop-ups, regardless of the Pilot's on/off state. After it's already been popped up, TealGlance won't come up at power-up again unless the specified number of minutes has passed.

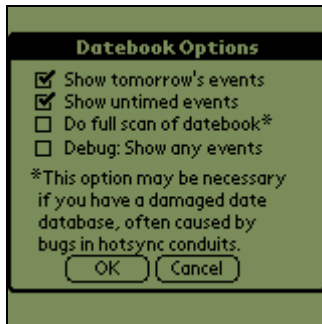
Power Off after timeout

Turns off Pilot if TealGlance is activated at power-up and is allowed to time out without a key or pen press.

Bold Font

Use a bold font for appointment and ToDo item display

Datebook Options



The following options may be changed by pressing the '*Date Options*' button on the config screen.

Show Tomorrow's events

With this option on, tomorrow's datebook items are shown below today's remaining ones, with a line separating the two.

Show Untimed events

With this option on, untimed events are shown in TealGlance.

Do full scan of datebook

By default, TealGlance assumes the datebook is sorted by date. The standard Palm applications guarantees this to be true. Unfortunately, many third-party conduits and hotsync replacement programs have bugs with scramble the Datebook, causing entries not to appear in TealGlance. Choosing this option forces TealGlance to look through the whole datebook each time, so it will find items even in a corrupt datebook database.

ToDo Options



The following options may be changed by pressing the '*To Do Options*' button on the config screen.

Show when due

Allows filtering of which ToDo items to show by Due Date Choices Are:

Show All

Show ToDo items ignoring Due Date

Due Today

Only show items due Today or earlier

Due Sometime

Only show items with some due date set

Today or Unset

Only show items due Today or without a due date set

Primary Categories

Sets the default categories of ToDo items to be shown. Up to two categories can be selected. If only one is needed, set them to be the same.

NOTE: Palm OS 2.0 (PalmPilot Personal and Professional) filters out empty ToDo categories from appearing in the settings menu. Because of this you will not be able to select a Category if it is empty. If this happens, just create a temporary ToDo entry to make the category appear.

Alt Categories

Sets the alternate categories of ToDo items to be shown during non-primary hours (by default 9am-6pm Monday through Friday).

Primary Beg Time

Sets start time for when the Primary ToDo category becomes valid.

Primary End Time

Sets end time for when the Primary ToDo category becomes invalid.

Primary ToDo Days

Selects days for which the Primary ToDo category is valid.

Advanced Options



The following options may be changed by pressing the 'Advanced' button on the config screen.

Simulated Buttons for Goto

Simulates a press of one of the app buttons for app-goto instead of directly calling the system applications. You can use this option if you're using a ToDo or datebook replacement and want to go to it instead of the standard system app. If the app you want to call is 100% compatible with the standard app, you can use the *Alt Date App* and *Alt ToDo App* options below.

Pass-thru button presses

Normally, if you press a button when TealGlance's screen is up, it dismisses TealGlance, but doesn't perform its normal function afterwards. This allows you to, say, press the Power button twice when turning on the PalmPilot to immediately dismiss TealGlance. When this option is set, the key instead performs its normal function after TealGlance goes away.

Ignore pager activation

If selected, this option forces TealGlance to check if the PDA were woken up by pager hardware. If true, TealGlance will not come up. If you do not have Pager hardware or a Palm VII, you should leave this unchecked, as it makes some assumptions about the hardware you are running to make its check.

Disable button power-on

This feature allows you to prevent accidental power-on, particularly on a Palm V, by automatically turning off the Pilot if turned on via a specified key.

Scan for alternate files

Some desktop synchronizing programs create datebook files with different names than the standard 'DatebookDB' database. Set this option to tell TealGlance to scan for these databases as well, especially if you are finding that datebook entries are not being shown.

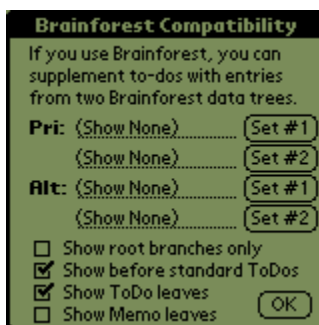
Alt Date App

Select and set this option to choose a Datebook replacement app to call when you click on a datebook item. Note that the replacement application must be 100% compatible with standard app's record-goto mechanism to work properly.

Alt ToDo App

Select and set this option to choose a To-Do List replacement app to call when you click on a ToDo item. Note that the replacement application must be 100% compatible with standard app's record-goto mechanism to work properly.

Brainforest Options



TealGlance offers support for using Aportis Brainforest trees as sources for ToDo items. You can select up to two Brainforest trees to be scanned at any one time. Two can be set to supplement the Primary ToDo Categories and another two can be set to supplement the Alternate ToDo Categories. The entries are treated as standard ToDo entries, ignoring repeating and start dates.

Note that clicking on a Brainforest item will start Brainforest, but won't automatically take you directly to that item or tree due to differences between the standard applications' record-goto mechanism and Brainforest.

The following options may be changed by pressing the 'Brainforest' button on the config screen.

Primary Trees #1 and #2

These are the two trees that can be used as sources for ToDo items during Primary ToDo hours.

Alternate Trees #1 and #2

These are the two trees that can be used as sources for ToDo items during Non-Primary ToDo hours.

Show root branches only

By default, TealGlance scans down a Brainforest tree from top down, reading all leaves of the tree. If you set this option, only items from the topmost level (Leftmost in

Brainforest) get displayed.

Show before standard

If set Brainforest entries appear before standard Todos instead of after them.

Show Memo leaves

Shows memo-type leaves in TealGlance. They appear in the ToDo list with a rectangular document icon instead of a checkbox.

Show ToDo leaves

Shows ToDo-type leaves in TealGlance. They appear the same as ToDo list items from the standard ToDoList application. If neither this nor the previous option is set, no Brainforest items will appear.

Appendix A - Troubleshooting

Installing and Running

If you are having problems getting the program to run, be sure that you have installed all three files: TealMaster, TealGlance, and CallGlance. Refer to the PalmPilot manual that came with your unit if you are unsure how to do this.

Afterwards, be sure to activate *TealGlance* by running *TealMaster* and selecting the checkmark next to *TealGlance*. If it still does not work, try un-selecting and re-selecting the checkmark. If *TealMaster* has gotten confused because you either updated or deleted *TealGlance* without first deselecting it in *TealMaster*, the Palm will likely crash, but with no lingering side effects afterwards.

Lastly, check the *TealGlance* options in *TealMaster* ('+' key) to insure it is set up to activate by your desired choices.

Other questions

It doesn't work properly with Fitaly Keyboard

Make sure TealGlance appears above Fitaly Keyboard in Hackmaster's list of hacks or if in TealMaster, TealGlance is given higher (lower number) priority. Do this by deactivating and reactivating TealGlance. Also make sure you have the latest TealGlance.

It doesn't work properly with DateBk3 alarms

Make sure you are running version 3.0 or newer of Datebk3. This new version reportedly reduces stack usage, making it much more compatible with hacks like TealGlance.

I deleted it and it still comes up

As noted in the documentation, before deleting TealGlance or any system extension, you must first turn off the program in TealMaster. If you forgot, you'll need to restart the PalmPilot using the pinhole in the back.

TealGlance still doesn't come up at power-on

Are you running PowerHack? Make sure TealGlance appears first in the Hackmaster list by deactivating and reactivating it, or set TealGlance a higher priority if running TealMaster.

My datebook events aren't showing

TealGlance only shows *upcoming* events, not those that have expired, and will show as many as will fit, unless you have TealGlance setup to show To-Do items as well. If this is the case, it will stop at half screen. When you register, the space behind the 'Please Register' box will also become available.

I checked. They still aren't showing

If you are running Groupwise/Syncwise (or similar sync/datebook replacement), this program appears to have a bug that mis-sorts the datebook database, rendering some items invisible. To check, download *dbScan* from <http://www.gorilla-haven.org/pimlico>, which can be used to check the datebook database's integrity. TealGlance 2.62 added a feature that assumes a damaged database and does a full scan of the database each time. TealGlance 2.83 added a feature to skip over damaged records in the database instead of aborting when it encounters one.

I'm running Easysync. Is that a problem?

It appears to be. The Easysync package seems to rename the datebook database so TealGlance can't find it. Try setting the "scan for alternate files" options in the advanced options screen.

Can TealGlance's screen scroll?

Not yet, as it was intended to just preview the next thing coming up. We may add this in a future version.

I hot-synced a new version and it crashed

As noted in the documentation, before hot-syncing a new version, you must turn off the program in Hackmaster/TealMaster.

Help. TealGlance locks up.

Check to see what other applications are running. There are known incompatibilities with CheckIn and GlowHack. You should no longer need GlowHack, as TealGlance has options to provide GlowHack functionality. We are currently also looking into possible interactions with SnoozeHack and 'memoplus' alarms.

Can TealGlance show Franklin Ascend to-do items?

Not currently, as Franklin's data format is not public knowledge. We are currently exploring this possibility. The Franklin folks have contacted us, but have yet to prepare and send us a data specification so we can continue.

It crashes when I press the Register button. I am using EVPlugBase.

This is a bug in the Hackmaster replacement EVPlugBase. We recommend using Hackmaster or TealMaster instead until the EVPlugBase is fixed to accurately mirror Hackmaster's behavior.

TealGlance doesn't work with the Palm V button hack.

Use the power-up button disabling features in the Advanced config screen of TealGlance 2.80 or greater. These allow you to automatically turn off the Palm if it is accidentally turned on by one or more specified keys.

Appendix B – Compatibility

As we cannot control the style and robustness of other products, we cannot guarantee compatibility with PalmPilot applications beyond those included from Palm Computing. However,

we try to resolve compatibility issues as best we can, working with other developers where possible.

TealGlance, like all system extensions, hook into the PalmPilot operating system in a way which may not be compatible with all other programs of this type, as all such programs must share limited system resources. If you experience unexpected behavior or crashes, always try disabling all other hacks to diagnose whether what you experience is the result of a conflict.

Palm V Button Hack

Use the *TealGlance* "disable power-on" features under the advanced menu instead to access some of the same functions.

EVPlugBase

The Pilot reportedly crashes upon pressing the 'Register' button when using this Hackmaster replacement. We recommend using Hackmaster or TealMaster instead until *EVPlugBase* is upgraded to fix this bug.

ReDo

ReDo wakes up your Pilot at midnight to reschedule events. The new version of *TealGlance* ignores alarms at midnight to avoid coming up at this time. Set *ReDo*'s wake time to midnight to best avoid a conflict.

Fitaly Keyboard

Fitaly Keyboard does some intense hacking of the Operating System to do its stuff. Be sure *TealGlance* appears *above* Check-In in the list of hacks in HackMaster. When you deactivate (uncheck) and reactivate (check) a hack in the list, it's moved to the top of the list. In *TealMaster*, set *TealGlance* to a higher priority.

GlowHack

Known to crash when *TealGlance* is active.
Use *TealGlance*'s backlight-activation option instead

PowerHack

Make sure you have an updated version of *PowerHack*. Version 0.95 reportedly fixes a previous conflict with *TealGlance*.

Franklin Ascend

No compatibility problems, but we're currently accessing the demand and viability of adding an option to list Ascend ToDo items instead of the standard PalmPilot ToDo application as a service to your customers who use Ascend.

Brainforest

Compatibility options have been added with *TealGlance* 3.0. Note that clicking on a *Brainforest* item won't take you directly to that item, however, due to differences between the standard applications' record-goto mechanism and *Brainforest*.

Check-In

Check-In seems to have some compatibility problems with *TealGlance*. When using *Check-In*, be sure *TealGlance* appears below *Check-In* in the list of hacks in

Hackmaster. When you deactivate (uncheck) and reactivate (check) a hack in the list, it's moved to the top of the list. In TealMaster, set TealGlance's priority higher. Better yet, use TealLock instead of Check-In.

Datebk3

Make sure you have Datebk3 version 3.0 or newer, which greatly decreases stack uses for compatibility.

Syncwise

We believe this hot-sync application can corrupt the datebook database and do not recommend it for this reason. If you find datebook items are not appearing when they should, try selecting the "Do full scan of datebook" option under the details menu. If this works, download the freely downloadable program dbScan to check/fix corrupted datebook records.

Appendix C - Revision History

Updates to Version 3.30 – March 8, 2001

- Fixed crash going to Todo Options screen under 3.5.2

Updates to Version 3.28 – August 17, 2000

- Added Color Icons for Palm IIIc
- Added Color display elements for Palm IIIc
- Fixed "Scan for alternate files" preferences item, which had previously had no effect

Updates to Version 3.27:

- Added advanced option to scan for alternate datebook files (was default behavior)
- Made todo list code smart to eliminate duplicate entries when one category is set to 'all'
- Reduced stack usage for better stability during alarms
- Added a little color support
- Fixed command stroke activation under PalmOS 3.5
- Fixed registration crash

Updates to Version 3.23B:

- Fixed activation from TealScript

Updates to Version 3.23:

- Changing spacing character to not conflict with euro sign in os 3.1

Updates to Version 3.22:

- Added full-screen display for cleaner look and more display space.
- Added small list icon to TealGlance calling application
- Fixed bug detecting pen tap positions
- Fixed recognition of Hotsync button under OS 3.1 (Button should be pressed and held momentarily)
- Fixed display of brackets for tomorrow's events
- Changed to scan for any Datebook databases including SyncWise ones
- Added support code for future OS compatibility

Appendix D - Credits

Manual by Vince Lee, Tex Tennison, and Diane Dybalski

Appendix E - Contact Info

TealGlance by TealPoint Software
©1999-2001 All Rights Reserved.

TealPoint Software
454 Las Gallinas Ave #318
San Rafael, CA 94903-3618
We look forward to hearing from you.

Please visit us at www.tealpoint.com, or email us at contact@tealpoint.com.

Appendix E - Products

Visit us online for our complete product line, including:

TEALAGENT

A Palm data converter, installer, and web clipper, TealAgent intelligently formats local, network, and web-resident data for the Palm handhelds, converting them to standard TealDoc, TealMeal, and TealInfo files.

TEALDOC

A Doc format text reader that's nice... without the price! TealDoc reads thousands of free docs and ebooks on the web, and has exclusive support for images, link buttons, protected documents, and more.

TEALECHO

Palm text entry as it always should have been. Real-time preview in digital ink lets you see what you're writing, increasing speed and accuracy

TEALGLANCE

Keep the info you need the most at your fingertips. Shows date, time, upcoming appointments, and to-do items at power up.

TEALINFO

The reference library at your fingertips; TealInfo lets you make or browse from hundreds of free interactive TealInfo Folio files, which are mini information applets with lists, tables, popup windows, and more.

TEALLAUNCH

Lets you quickly launch your favorite apps and useful system and editing functions. Powerful button-programming features map functions and apps to hundreds of keypresses and keypress combos.

TEALLOCK

What the security app should have been: custom text and images, graffiti shortcuts for hide privates, show privates, and lock, and automatic locking when turned off or by time.

TEALMAGNIFY

Never squint at a phone number again. An ever-ready magnifying glass compatible with most any program.

TEALMEAL

Answer the day's biggest question... where to go for lunch! A Restaurant chooser and editable database.

TEALMOVIE

Play movies and videos on your Palm with sound! Amazing system supports smooth video, sound playback, and full screen display. Includes windows encoder for making your own movies.

TEALNOTES

Sticky notes for your PalmPilot! Draw freehand notes, maps and doodles directly into your Memos, To-do entries, datebook entries--almost anywhere.

TEALPAINT

The most full-featured paint and sketch program on the Pilot. Includes 16 patterns, 12 brushes, paint bucket, magnified mode, text tool, lasso tool, screen-grabber, color and grayscale support and much more.

TEALPHONE

The better Address book app, with large, easy-to-see numbers, viewing by first, last, or company name, advanced searching, and more!

TEALPRINT

The all-in-one PalmPilot printing solution. Print both text and graphics to Infrared, Serial, and Parallel Printers (with adapter), and even any Windows printer with exclusive 'HotSync' printing!

TEALSCRIPT

Graffiti reinvented; a replacement for the system text recognition system that allows you to tune, modify, and add your own strokes

TEALTOOLS

An invaluable collection of pop-up Palm Desk Accessories, including a pop-up calculator, lock/stopwatch, preferences panel, editing panel, memopad, and a file and backup manager.

Appendix F - Registering

Currently, you may register by snail mail, electronically through our website at www.tealpoint.com with a credit card and a secured server, or through PalmGear HQ at 1-800-741-9070. For the first option, the enclosed registration form is provided for your convenience. You may use this form or simply send the following to the address above.

- Product Name
- E-Mail Address
- HotSync User ID (Pilot Name Required for Passkey generation. It can be found on the main screen of the HotSync application on the Pilot as "Welcome _____" or in the corner on a PalmIII or higher)
- Check (drawn off a US Bank) or Money Order for (\$11.95 US) to TealPoint Software

Appendix G - Disclaimer

We at TealPoint Software are committed to providing quality, easy-to-use software. However, this product is provided without warranty and the user accepts full responsibility for any damages, consequential or otherwise, resulting from its use.

This archive is freely redistributable, provided it is made available only in its complete, unmodified form with no additional files and for noncommercial purposes only. Any other use must have prior written authorization from TealPoint Software.

Unauthorized commercial use includes, but is not limited to:

- A product for sale.
- Accompanying a product for sale.
- Accompanying a magazine, book or other publication for sale.
- Distribution with "Media", "Copying" or other incidental costs.
- Available for download with access or download fees.

This program may be used on a trial basis for 30 days. The program will continue to function afterwards. However, if after this time you wish to continue using it, please register with us for the nominal fee listed in the program.

Thank you.