

iSpin Launcher

version 1.0

by TapTarget.com

User Manual

Table of Contents

Introduction.....	3
System Requirements.....	3
iSpin Launcher.....	3
iSpin Conduit.....	3
Installation.....	3
Welcome Screen	4
License Agreement Screen	4
Component Selection Screen.....	5
Destination Folder Selection Screen.....	5
Palm User Selection Screen.....	6
Installation Completing Screen	6
Uninstallation.....	7
Uninstall from Windows desktop	7
Uninstall from Palm device	8
Unset iSpin as Palm default launcher.....	8
Getting started.....	10
Launch iSpin for the first time.....	10
View and launch applications on your handheld.....	11
Organizing your application shortcuts.....	15
Working with lists.....	17
Open (Single Tap)	18
Select (Short Tap-and-Hold)	18
Context Menu (Long Tap-and-Hold)	19
Scroll (Tap-and-Drag)	20
Drag-and-Drop.....	21
iSpin menu	23
Options menu.....	23
Desktop Settings.....	23
iSpin Preferences.....	24
Registration	25
Tools menu	26
System Information.....	26
Task Manager.....	27

Introduction

iSpin is Palm OS application launcher.

We made iSpin to be

- small and fast,
- intuitive and easy-to-use,
- nicely looking,
- powerful,
- extendable and customizable.

System Requirements

iSpin Palm Launcher is distributed in two editions:

- as zipped file with Palm applications only (<http://www.taptarget.com/download/ispin-1.0.zip>), and
- as full-featured Windows executable installation package (<http://www.taptarget.com/download/ispin-1.0.exe>).

iSpin Launcher

- Palm OS 3.5 required; Palm OS 5.0 or higher recommended.
- 100K internal memory on Palm handheld for the launcher.
- 400K for WinXP theme.
- 5K for card support.
- * more memory is needed for additional themes and channels.

iSpin Conduit

- Windows 98/Me/2000/XP.
- Palm Desktop 4 or higher.
- 500K HDD space.

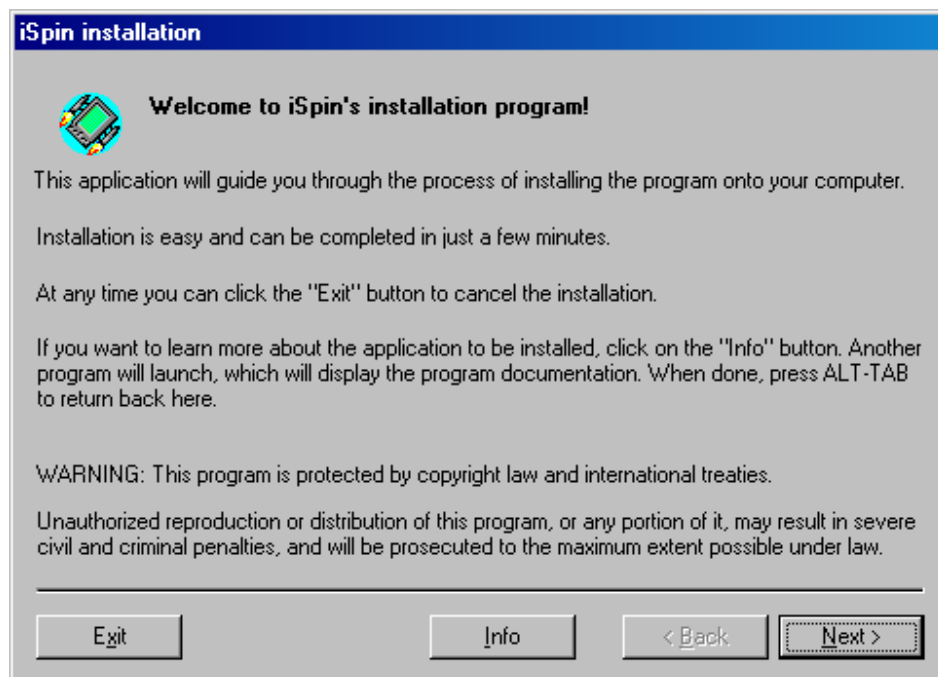
Installation

*Note: if you have a pre-release version of iSpin launcher on your Palm handheld, it must be completely removed before installing iSpin 1.0. Please, read **Uninstallation** section of the manual.*

To install iSpin Launcher from zipped file, unzip *ispin-1.0.zip* it and install ispin.prc launcher file and winxp.prc WinXP theme file to your handheld. You can also install iconnect.prc, iscript.prc, and ispinonline.pdb to view iSpin Online channel, though, to work with it you will need iSpin conduit to sync iSpin Online channel.

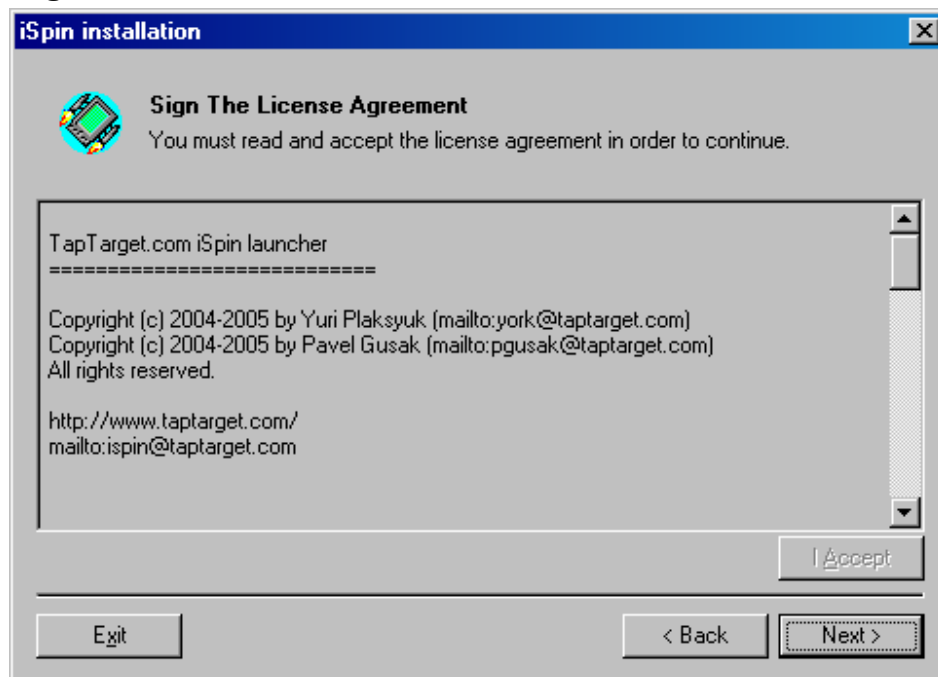
To install iSpin Launcher from the Windows executable, just launch *ispin-1.0.exe* file.

Welcome Screen



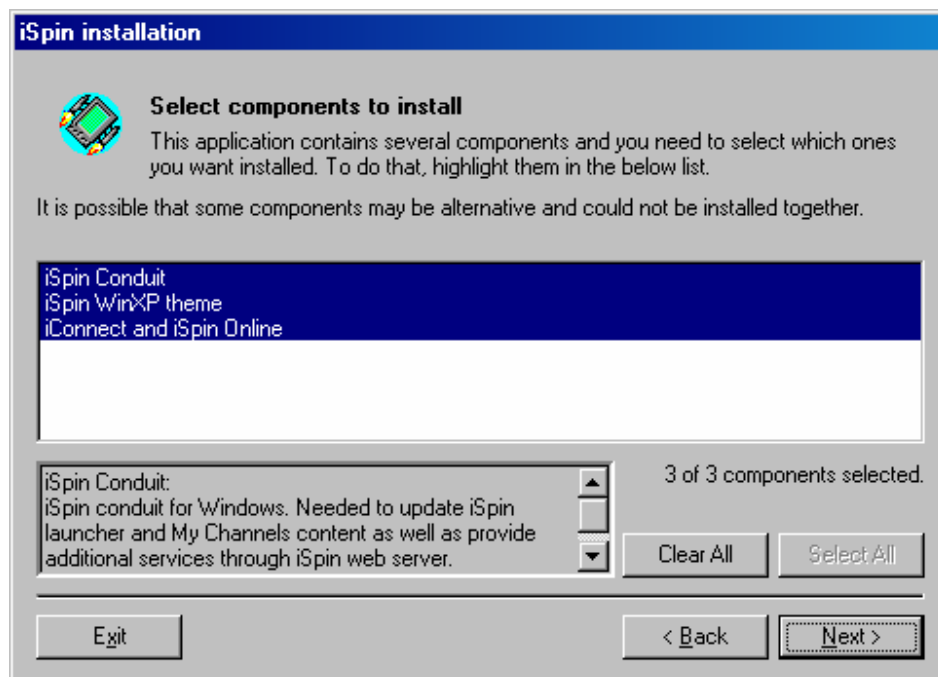
You will see Welcome Screen. Read the installation instructions Press Next.

License Agreement Screen



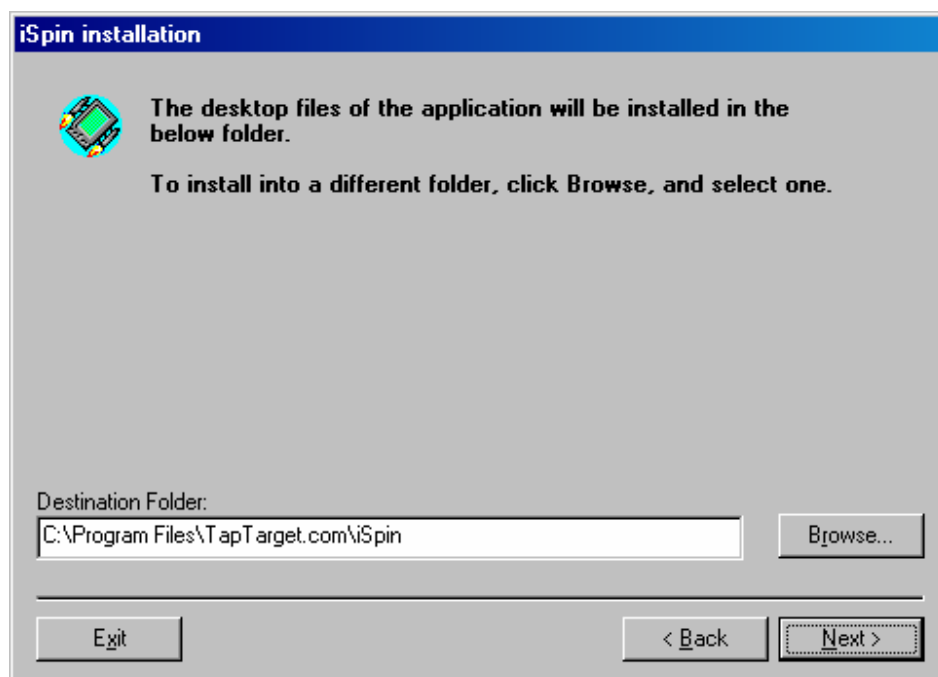
Now you will see License Agreement Screen. Please, read iSpin End User License Agreement and accept or decline it. Press I Accept and then Next if you accept it or press Exit if it is unacceptable to you.

Component Selection Screen



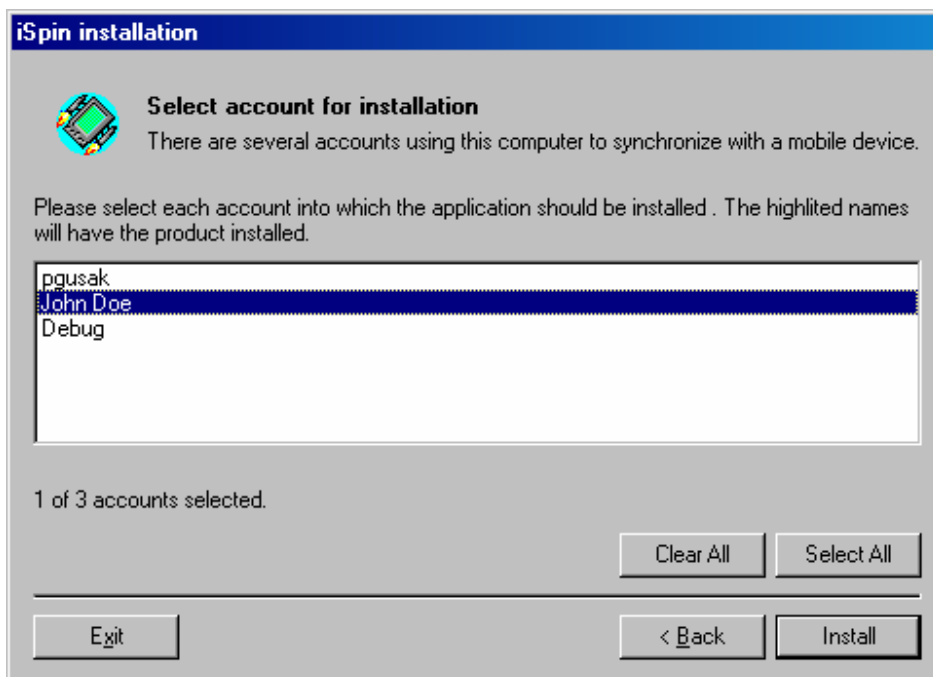
Now you will see Component Selection Screen. Select the components you need, read the component descriptions below the component list. Press Next when done.

Destination Folder Selection Screen



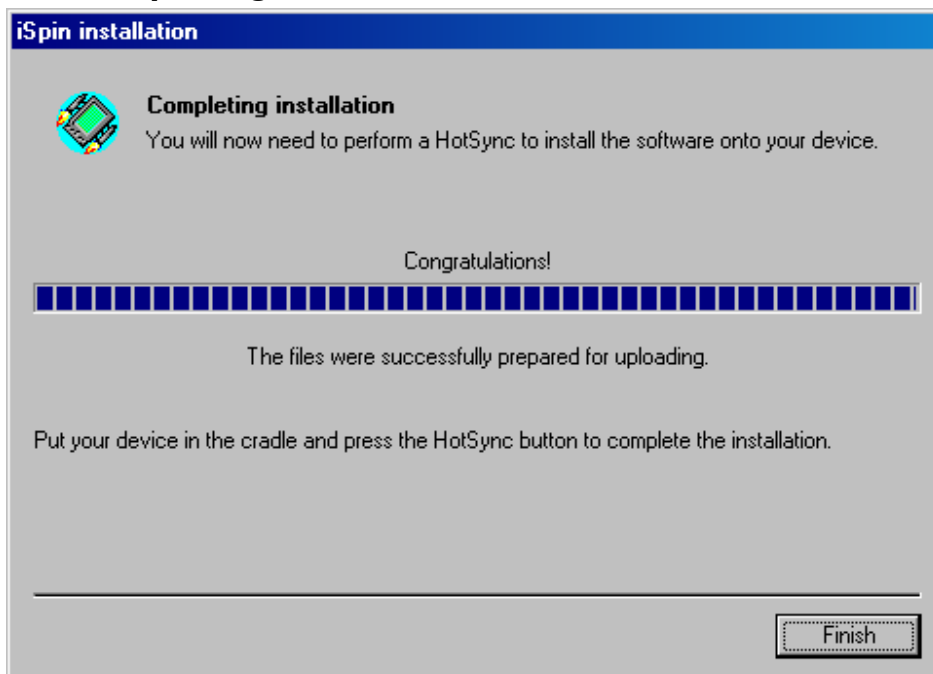
Then you will see Destination Folder Selection Screen. Leave the default folder name or change it to the name you want iSpin to be installed to. Use 'Browse...' button to select a folder on you computer. Press Next when done.

Palm User Selection Screen

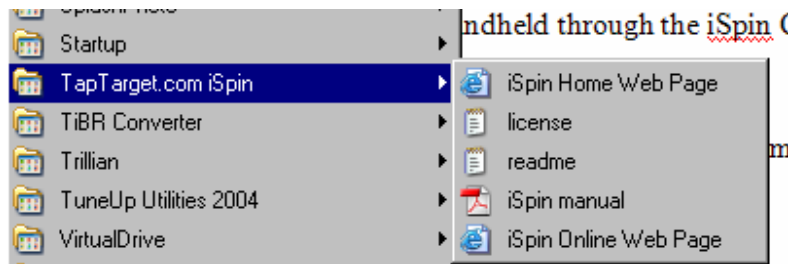


If you have several Palm users registered on your computer, you will see the Palm User Selection Screen. Deselect users you don't want iSpin Launcher to be installed for and press Next.

Installation Completing Screen



iSpin installation will be performed now and you will see the Installation Completing Screen. Put your device in the cradle and press the HotSync button to install Palm applications onto your handheld. Press Finish to close the window.



You can open iSpin program group from your Windows Start menu. You will see license and readme files there as well as links to iSpin Home Web Page and iSpin Online Web Page, and iSpin manual.

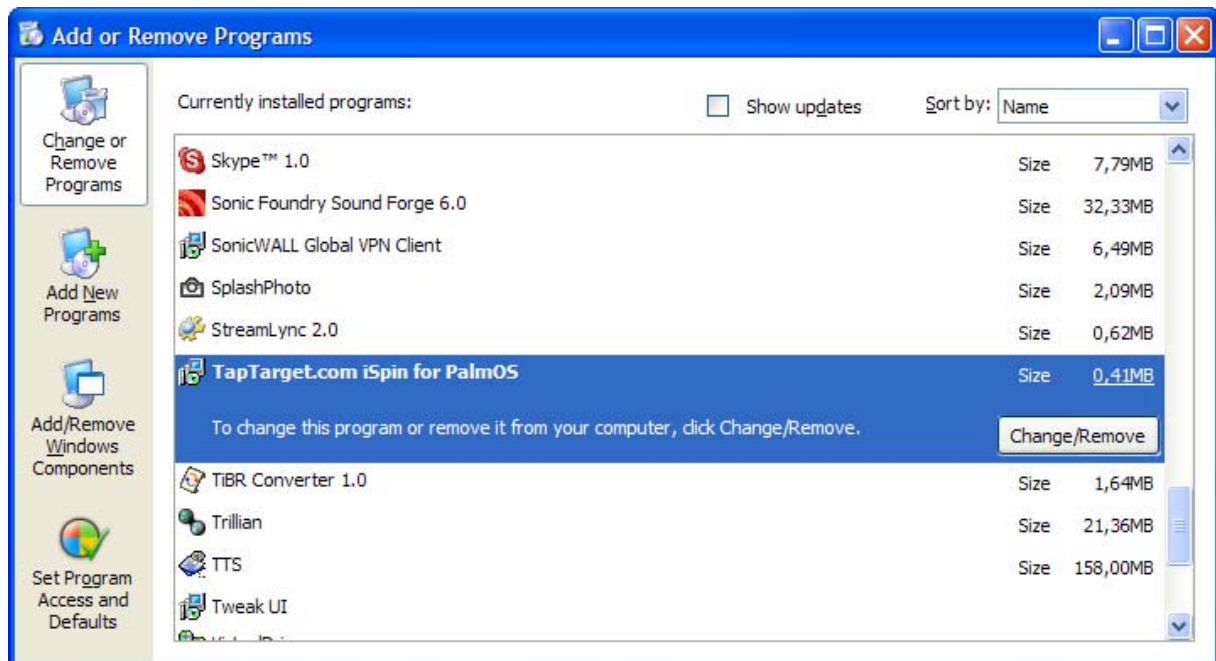
You can find different themes, channels and language packs for iSpin launcher on iSpin Online web site <http://www.installigent.com>.

Please, check for the latest news and iSpin versions. If a newer version of iSpin launcher is available, you can simply start using iSpin launcher without reinstalling it manually. The latest version will be automatically delivered directly to your handheld through the iSpin Conduit.

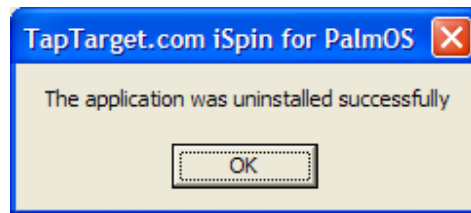
Uninstallation

To uninstall iSpin you need to remove it both from your Windows desktop and from Palm device.

Uninstall from Windows desktop



To remove it from the PC just open Control Panel applet and choose Add or Remove Programs option.

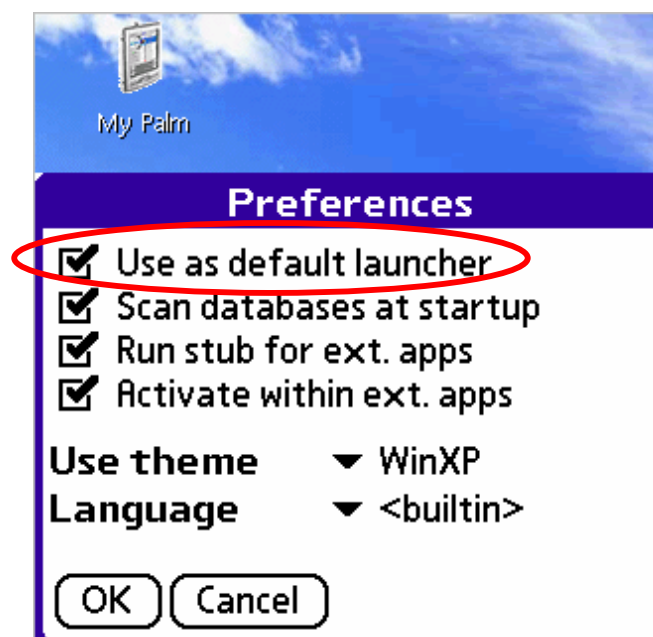


The above window shows up to confirm iSpin was successfully uninstalled from your PC.

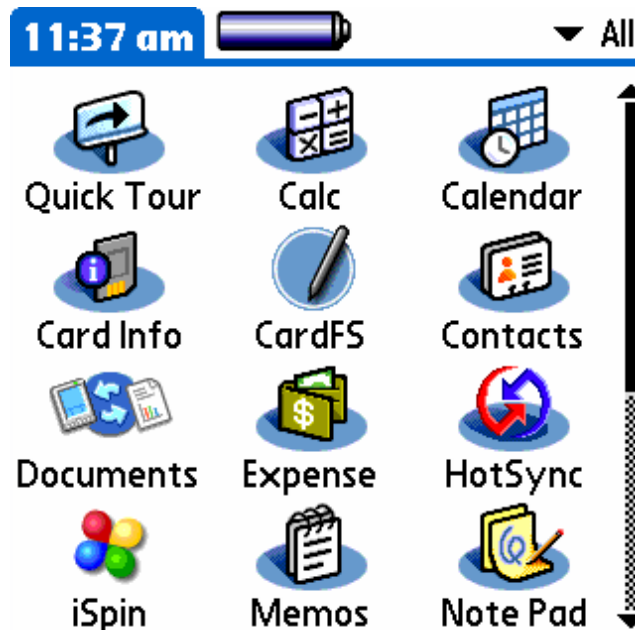
Uninstall from Palm device

To uninstall iSpin from your handheld, you need to go through 3 steps.

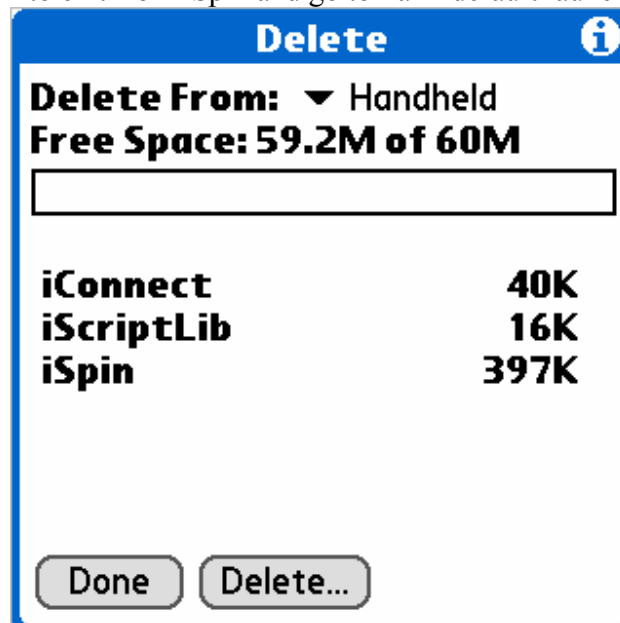
Unset iSpin as Palm default launcher



Open Preferences form in iSpin and clear 'Use as default launcher' check box.



Then tap to home button to exit from iSpin and go to Palm default launcher.



Open menu and choose Delete command. The Delete will open. Select iSpin and tap Delete button. *For old versions of iSpin:* if you have installed iSpin card support, then you will need to delete CardFS application as well.

If you used iConnect browser to view iSpin channels only, you can also delete iConnect browser application (not recommended if you are not sure you don't need it).

If you do not use any channel browsing applications built on TapTarget.com's iScript technologies, you can also delete iScriptLib library (not recommended if you are not sure you don't need it).

iSpin removal procedure is complete.

Getting started

Launch iSpin for the first time



After installing iSpin launcher on your handheld, please, find iSpin icon in your launcher and launch iSpin.



The first time iSpin launches, it offers you to set it as your default Palm OS launcher. If you answer Yes, every time you tap on the home icon in your silk screen area iSpin will be activated. You can always run standard Palm OS launcher through iSpin menu. Answer no if you want to remain your old launcher as default.

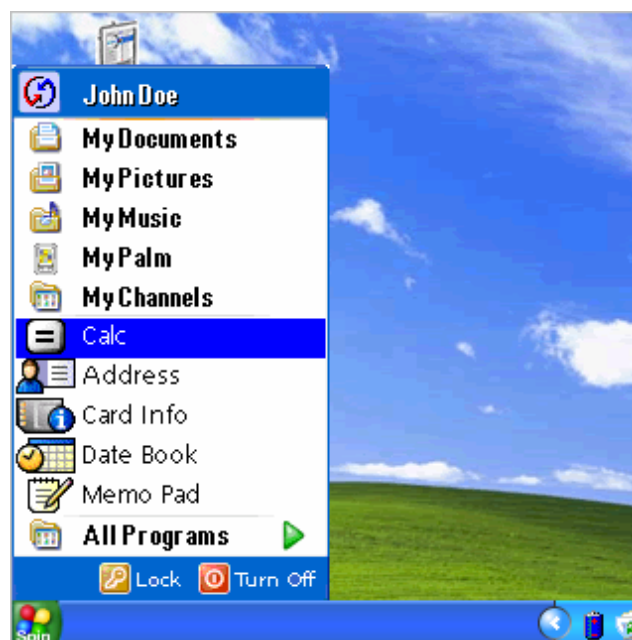



You will see the above screen (provided you install WinXP theme and have a hi-res Palm OS 5 device). As you can see, iSpin launcher looks very familiar and it feels very familiar and intuitive as well when you start using it.

View and launch applications on your handheld

The main function of a launcher is to view and launch applications.

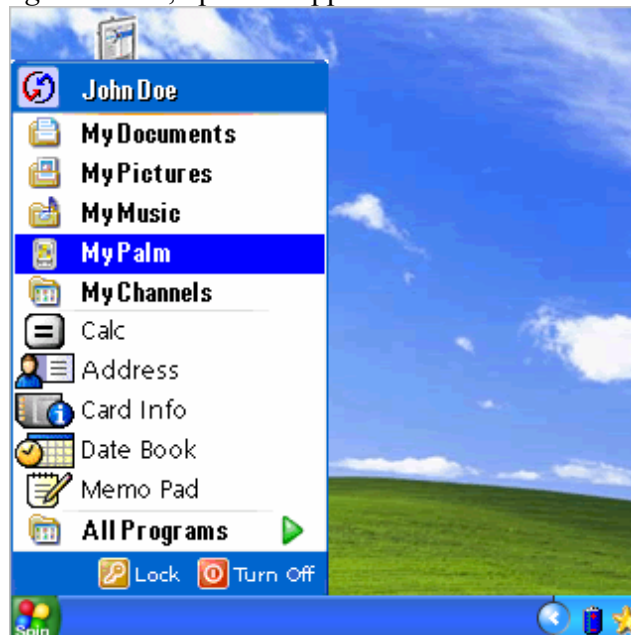
You can launch an application (say Calc) in different ways in iSpin launcher:



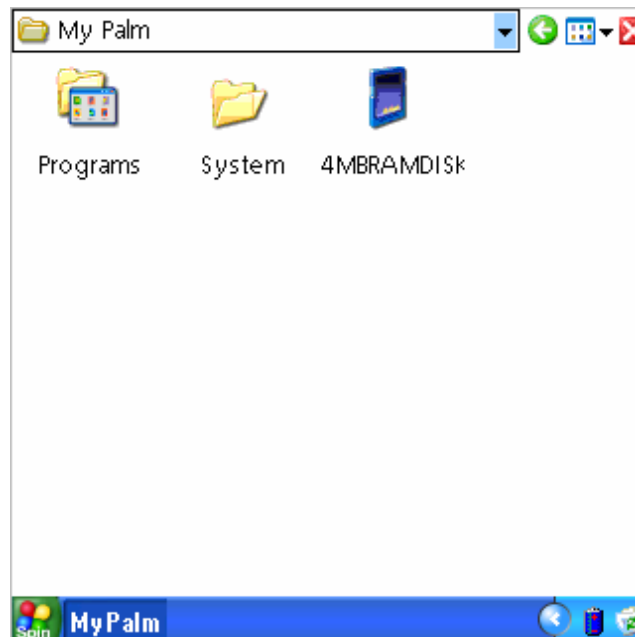
Tap *Startmenu* button  at the left lower corner of the screen. Startmenu will appear. If you launched Calc recently, it will appear in the most recently used application in Startmenu, so you can simply launch it from here. Just tap it.



You can also tap *All Programs* item, open the application list and find Calc there.



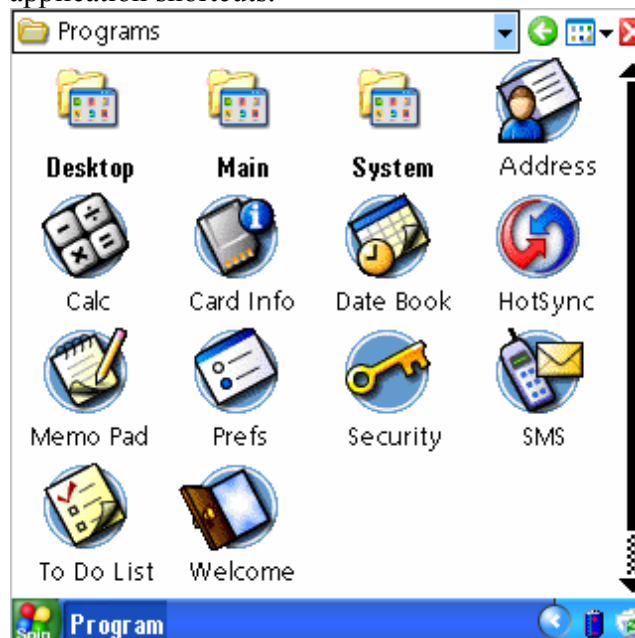
Or you can open Explorer window to view applications and files using *My Palm* item in Startmenu.



You will see Explorer window with 'root' folder *My Palm*. There will be at least two subfolders *Programs* and *System*, and possibly card subfolders if you have expansion cards installed in your handheld.

Programs folder is where all the shortcuts to your applications will be. *System* icon leads to your Palm's system memory. Card icons lead to your expansion cards.

Tap *Programs* to view application shortcuts.

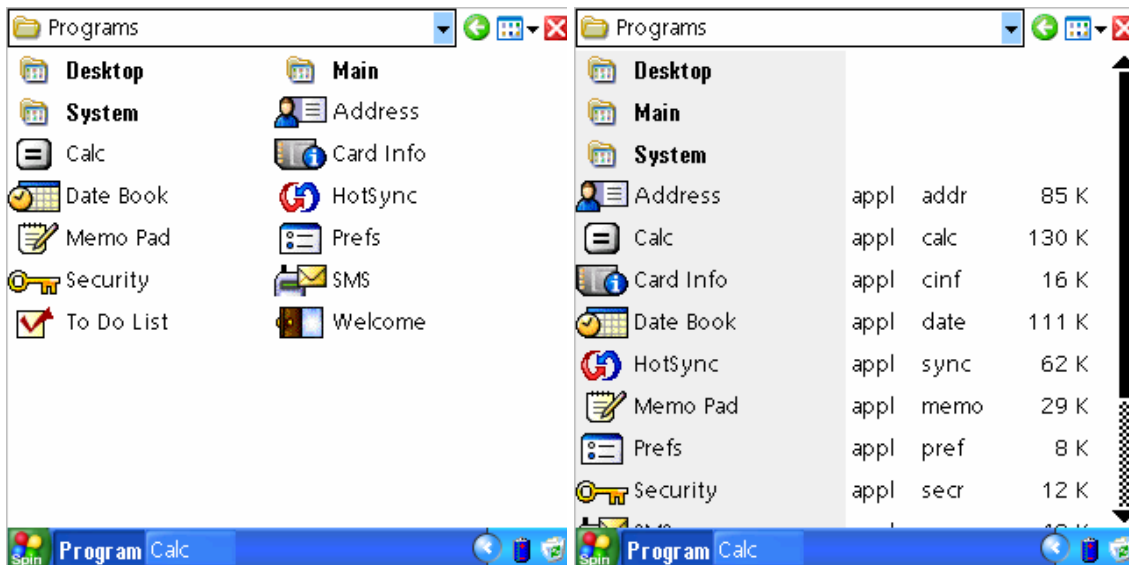



You will see application shortcuts and folders. Navigate to the application you want to launch and tap. To open a folder just tap it.




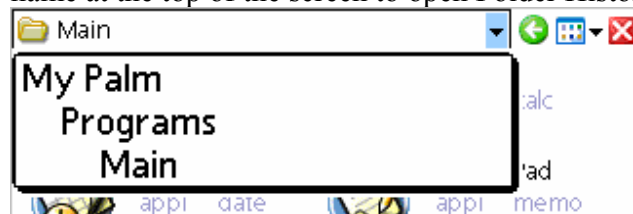
You can change the Explorer view by tapping to list view button  and selecting a view type (Icons, Tiles, List, Details).





You can close any explorer window using close button  in the top right corner of the screen. And you can always open other explorer windows through the Startmenu.

You can also go back to the previous folder using back button  or just tap on the current folder name at the top of the screen to open Folder History dropdown menu.



Organizing your application shortcuts

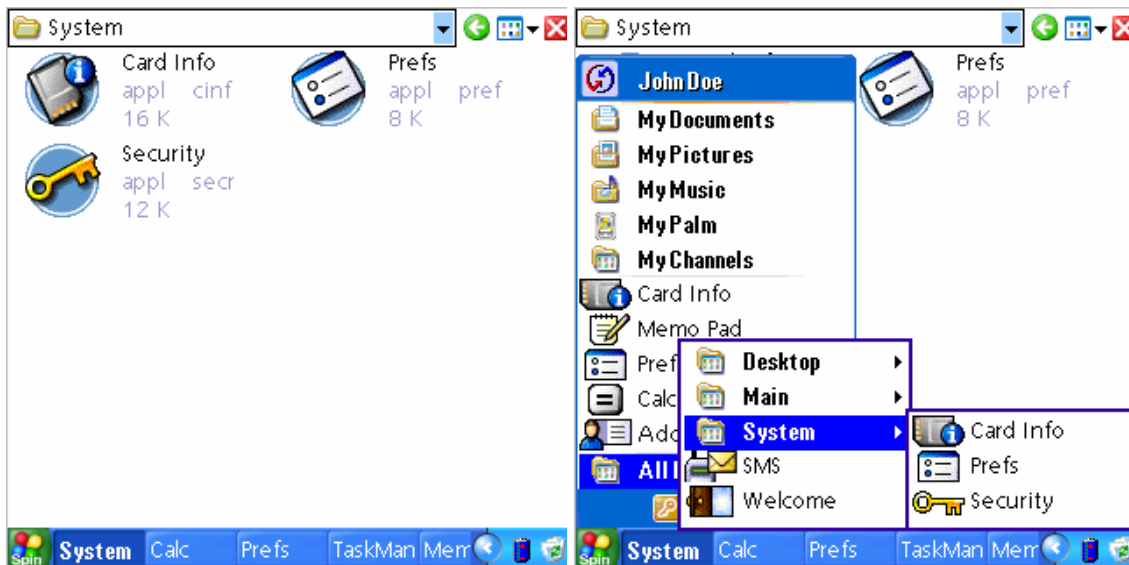
iSpin stores all the application shortcuts in My Palm/Programs folder. When iSpin is installed, all the shortcuts for applications stored in internal memory is placed to Programs folder. iSpin has three predefined subfolders Desktop, Main and System for you for easier start. Desktop folder content is automatically added to iSpin Desktop. You can rename folders, remove, or create other folders through the Explorer's context menu, and move application shortcuts among folders to best categorize your applications. Simply drag-and-drop shortcuts to a folder to move it there. Please, refer *Working with lists* section of the manual for more details on drag-and-drop, selection and context menus. Below is an example of categorizing application shortcuts:



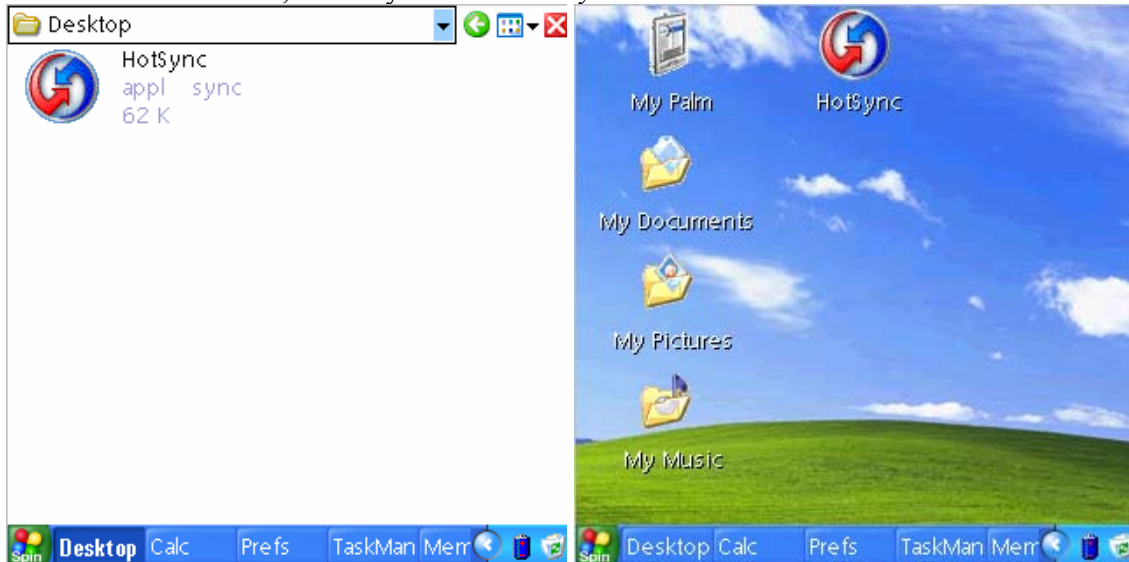
Initially all the application shortcuts are in *Programs* folder.



We moved Address, Calc, Date Book, Memo Pad, and To Do List to *Main* subfolder



And we moved Card Info, Security and Prefs to *System* subfolder.



HotSync application shortcut is moved to Desktop folder and became visible on iSpin desktop for easier access.

Working with lists

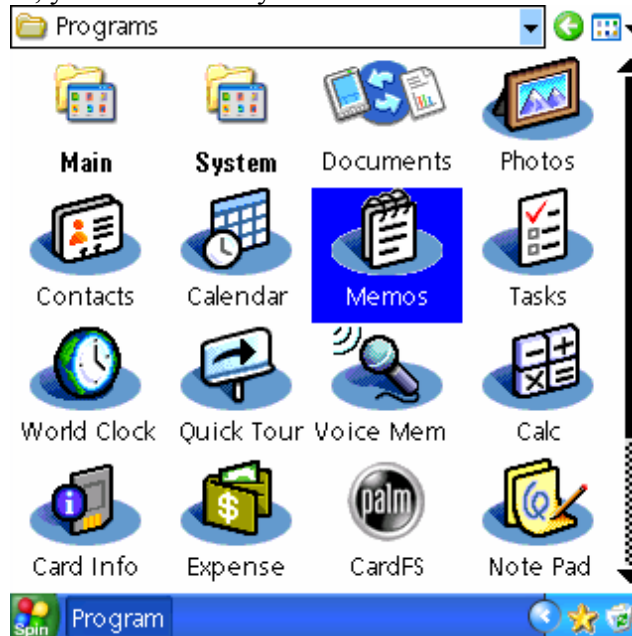
TapTarget.com iSpin Launcher uses lists to show applications and files in explorer windows, active tasks in taskbar, icons in tray, items on the iSpin desktop and start menus. These lists are shown in different ways and provide different functionality, though they all use the same basic logic and intuitive rules.

Basically, you will hardly need any documentation on how to use lists in iSpin, because they are very intuitive and easy to use, and you will find them very familiar from the very beginning.

Open (Single Tap)

Single tap on a list item usually opens it. If the list item is a folder, you will open the folder. If the list item is an application or a data file, you will normally launch the application or open the data file using proper application.

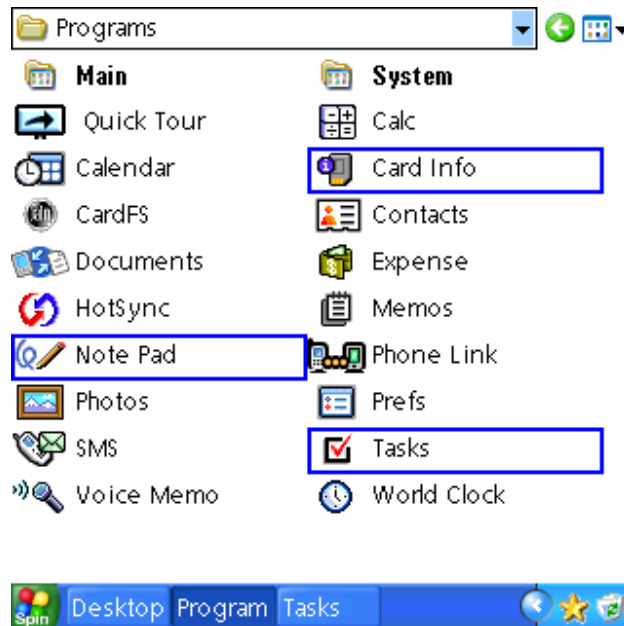
When you tap on an item, you will normally see short blue bar blink and then item opens.



Actually, when you do a short single tap on an item, you will execute item's default command – the command that goes first in the item context menu. To know what command will be executed on a short single tap, open item context menu and look what command is the first (see below on how to open item context menu).

Select (Short Tap-and-Hold)

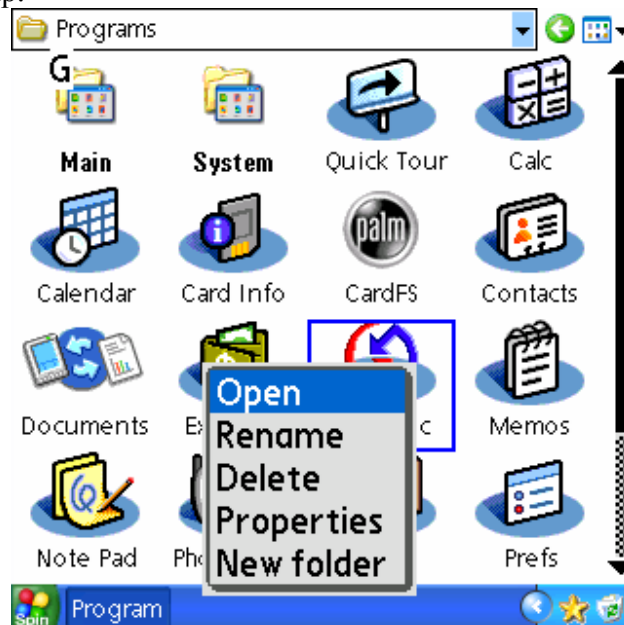
You will need to select list items for some operations like dragging or opening the item's context menu. To select an item, tap the item you need and hold stylus touching the screen. You will see blue frame around the item. When the blue frame shows up, release the stylus and select another item (unless you want to access the item's context menu).



To deselect an already selected item, just tap and hold on it until the blue selection frame disappears.

Context Menu (Long Tap-and-Hold)

When you tap on a list item and hold the stylus on the screen, you will see the selection frame first, if you do not release the stylus and wait a bit more, you will see a context menu for the selected item popped up.

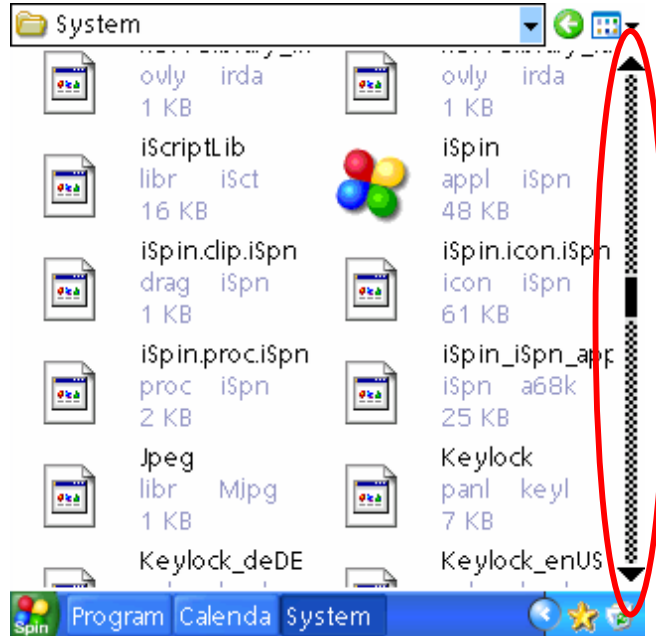


Select a command you need by tapping it. The first command in the item context menu is item *default command*, it is executed when you do short single tap on the item.

Scroll (Tap-and-Drag)

In many cases list does not fit into the view area, so not all list items are shown. To view the out-of-screen items you need to scroll the list. There are several ways to scroll the list.

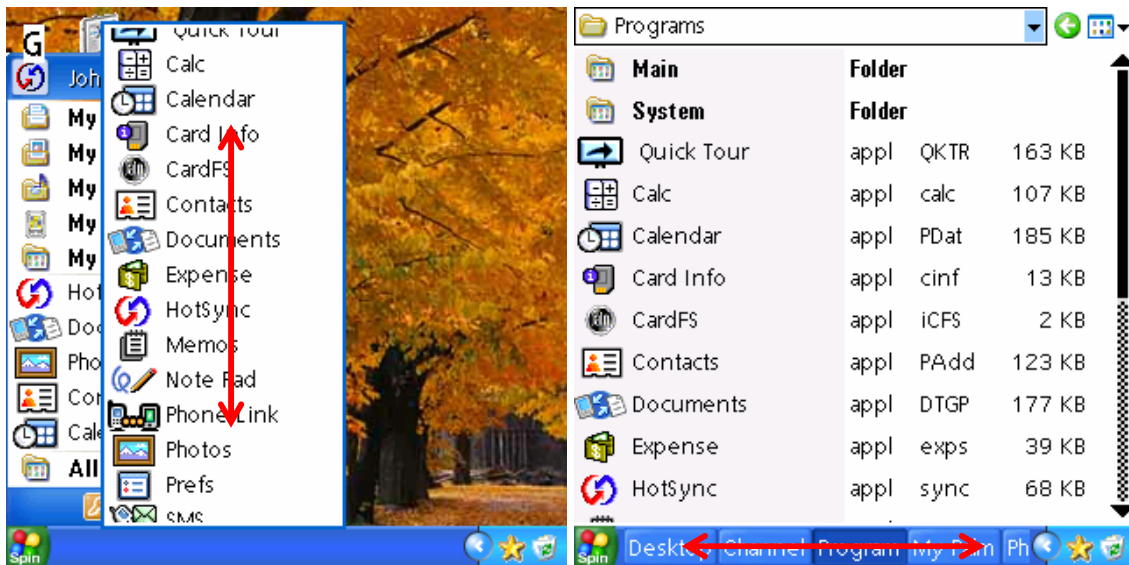
- You can use usual *scrollbar* if it is shown aside the list



- You can use *PageUp* and *PageDown* hard buttons of your Palm handheld to scroll the list up and down one page at a time.



- Or you can tap and drag the list with your stylus. Just tap and move the stylus up or down – you will see the list moving with your stylus. Note: you should start moving the stylus right after you tapped. If you tap and hold the stylus, iSpin will mark the item as selected to provide context menu or multi-item selection for group operation. If this happened, simply tap somewhere outside the selection bar to clear the selection and then tap and drag to scroll.



Some lists like start menu and taskbar have neither scrollbars nor scrolling indicators but support tap-and-drag type of scrolling.

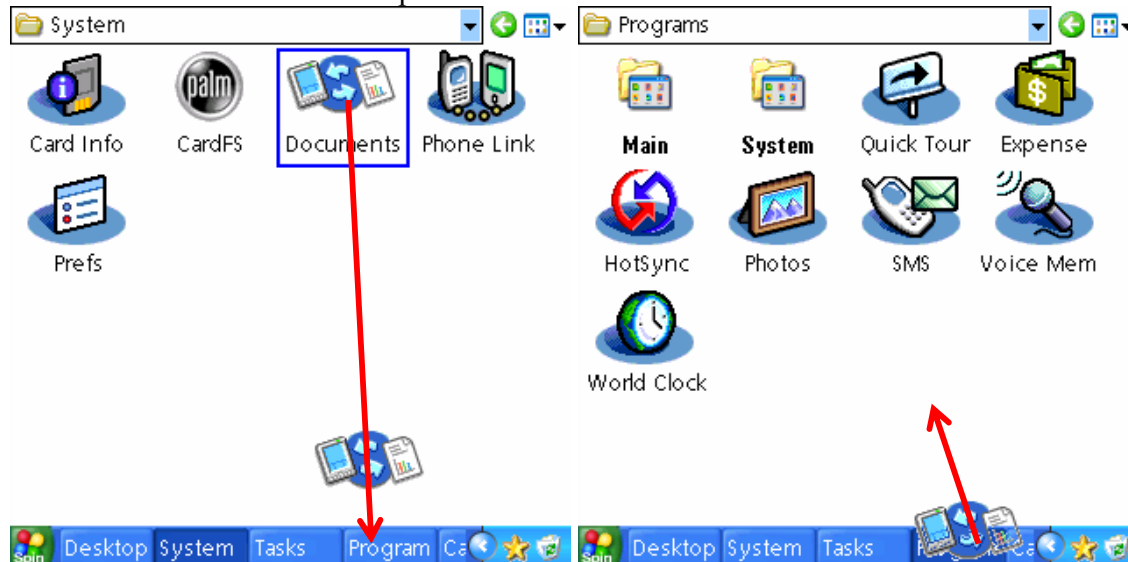
Drag-and-Drop

Many lists in iSpin Launcher support Drag-and-Drop for moving and copying items. To perform Drag-and-Drop you need to select item(s) you want to drag. Just tap and hold an item until blue frame appears. Repeat that procedure for all items you want to process. When you select the latest item you want to process, do not release the stylus and just move it to where you want to copy or move the selected item(s). You will see the item icon moving under your stylus. When you drag the selected item(s) to where you want them just release the stylus and see how the list changes. If several commands could be performed with the dragged-and-dropped items (for instance, copy and move), you will be prompted on what command should be executed.

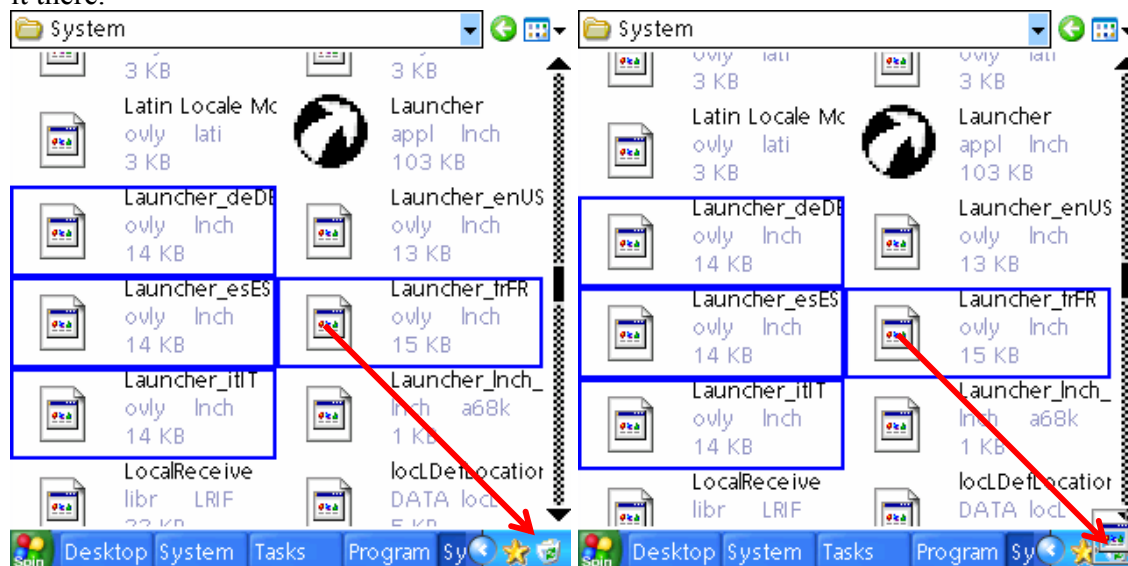


The above picture shows dragging-and-dropping *Card Info* application shortcut into *System* folder inside the list. You can see the *Card Info* icon moving with the stylus.

In some drag-and-drop operations you will need to select item(s) in one list (the source list) and then drag-and-drop them into another list (the destination list). This is possible, but the destination list should be presented somehow on the iSpin screen so that you can move the stylus on to activate it and then to drop the items there.



In the example above you can see *Documents* application shortcut dragged-and-dropped from *System* folder to *Programs* folder. Note the destination folder *Programs* is in the Taskbar. So, when you select *Documents* icon in *System* folder, you can then drag it onto *Programs* item in Taskbar to deactivate source folder *System* and to activate the destination folder *Programs*. Then when the destination folder *Programs* is open you can drag *Documents* icon into it and then drop it there.



Drag-and-Drop also allows performing group operations, i.e. operations on several items at once. Just select all items you want to process and drag-and-drop them to where you want. The above example shows deleting several files at once. To do that you select all the items and then drag-and-drop them to the trash can icon in iSpin Tray.

iSpin menu

To open the iSpin menu tap standard Palm OS menu icon in your silk screen area. Usually it is in the left bottom corner of the silk area (on Tungsten T3/T5 it is third left icon in system bar at the bottom of the screen).

iSpin menu consists of two top-level sections *Options* and *Tools*.

Options menu



Desktop... command opens Desktop Settings window where you can set how your Desktop will look.

Preferences... command opens Preferences window to configure iSpin and to change iSpin theme and user interface language.

About... command opens a window with iSpin version and copyright.

Desktop Settings

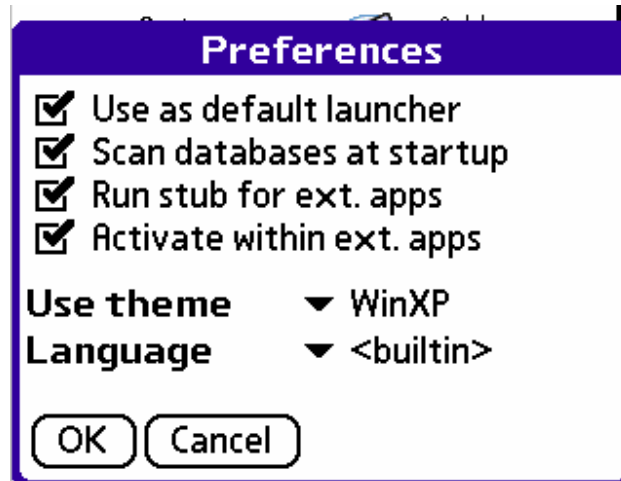


First three checkboxes *My Documents*, *My Pictures*, and *My Music* serve to show and hide My Documents, My Pictures, and My Music icons on iSpin Desktop. Drop-down lists on the right allow to assign applications you want to the appropriate icons. By default, on the very first launch iSpin searches your handheld system memory to known document managers, picture viewers and music players and assigns them to the icons.

Category dropdown list allows you to select a subfolder of My Palm/Programs folder to be viewed on Desktop. All shortcuts from the selected subfolder are added to Desktop after system My Palm, My Documents, My Pictures, and My Music icons.

If you mark *Sort items in Explorer* checkbox, iSpin will sort files and shortcuts in alpha order in Desktop and Explorer windows.

iSpin Preferences



Use as default launcher checkbox shows is iSpin your system default launcher or not (the default launcher is the launcher that is opened when you tap on system Home button)

If *Scan databases at startup* checkbox is marked, iSpin will update application shortcuts every time you return to iSpin. Unmark it if you install new applications rarely. You can always manually scan databases using Tools|Scan databases command.

If *Run stub for ext. apps* option is set, iSpin will run each external applications inside a special 'stub'. In this case, when you launch an application and then go to back iSpin, you will see this application in iSpin taskbar and can easily switch back to this application by tapping it there. iSpin always run 'Stub' when you launch an application from your expansion memory card. The application is copied from the memory card into internal memory and remains there until you close the task in iSpin (using Task Manager or Taskbar context menu).

When *Run stub for ext. apps* option is not set, iSpin launches your internal memory applications just switching to them, so when you switch back to iSpin, these applications are 'closed', so you will not see them in taskbar.

If *Activate within ext.apps* option is set (for registered users only), iSpin will be activated *within* the external applications (so that the launching application will not quit). Below you can see running Calc. When user taps system Home button, iSpin just shows its taskbar (with Calc task active):



You can switch to another application (say Prefs), or open Startmenu and launch any application from there, or open iSpin menu to view System Information or anything else. When you tap Home button again, iSpin taskbar will hide and you will continue using your current application. *Use theme* and *Language* dropdown lists show iSpin themes and language packs installed and allow to switch iSpin look and feel and user interface language. Please, visit iSpin Online site at <http://www.installigent.com/> to download new themes and language packs. Currently, there are more than 10 themes and 14 language packs available, and the number is growing.

Registration

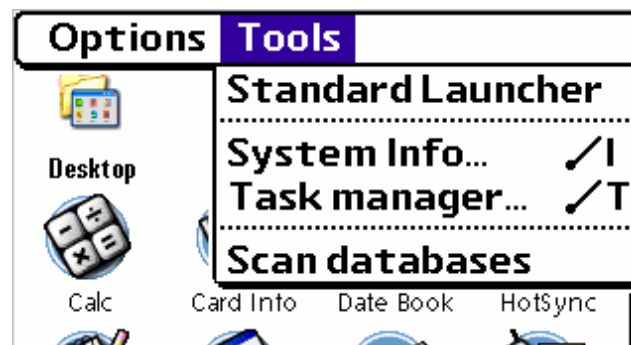
Registration

In order to register your copy of iSpin launcher, enter your purchase registration number, please:

Reg #:

Just enter registration number you got after purchasing iSpin launcher. When you enter the number, *Activate within ext.apps* option will be shown in Preferences.

Tools menu



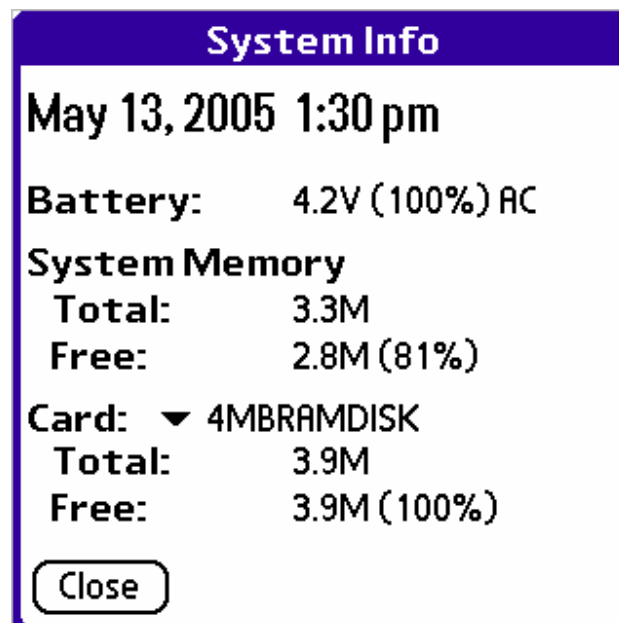
Standard Launcher command allows to run Palm OS standard launcher.

System Info... command shows current date, time, battery status and memory allocation status for internal memory and expansion cards.

Task Manager... command opens iSpin Task Manager to view list of current tasks and to manage them.

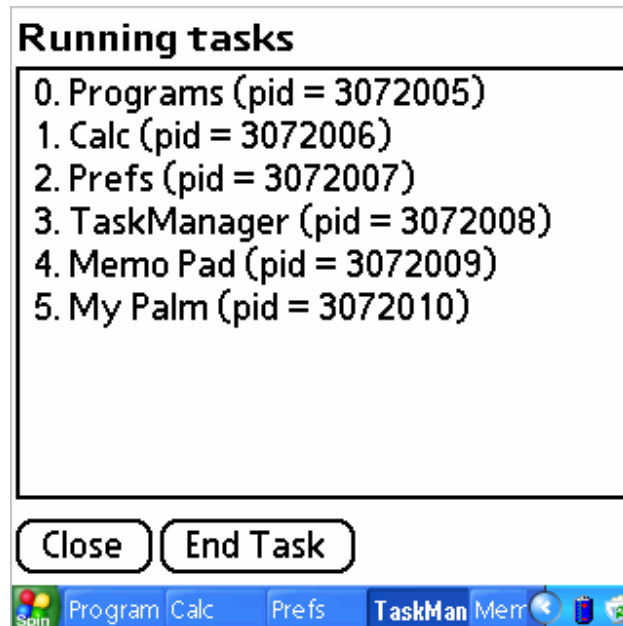
Scan databases command updates application shortcuts in My Palm/Programs folder.

System Information



System Info window shows current date, time, battery status and memory total and free sizes for internal memory and expansion cards.

Task Manager



iSpin has built-in application for managing active tasks. Task Manager shows currently running tasks and allows ending any task.