

Card Export 2 User Guide

© Softick 2004. [All rights reserved](#)

Table of Contents

1. What is Card Export II.....	1
2. Compatibility.....	1
2.1 Supported handhelds.....	1
2.2 Unsupported handhelds.....	1
2.3 Supported desktop operation systems.....	1
2.4 Handheld software updates.....	2
3. Installation.....	2
3.1 First start.....	2
4. Using Card Export II.....	2
4.1 Folders on your cards.....	3
4.2 Disconnecting Card Export II.....	4
5. Card Export II Registration.....	4
6. Card Export II Uninstallation.....	5
7. Card Export II Preferences.....	5
8. Windows 98 USB Mass Storage Driver installation.....	5

1. What is Card Export II

Card Export is an application to copy the data on your computer to the "Secure Digital" or "MultiMedia Card" (SD/MMC) on you Palm handheld without performing HotSync(r) operation. Card Export 2 implements industry standard USB Mass Storage protocol and uses built-in operation system drivers to provide access to the cards.

2. Compatibility

2.1 Supported handhelds

We have tested Card Export II with the following PDA and smartphones:

Palm m125, Palm m500, Palm m505, Palm m515, Palm Tungsten T, Palm Tungsten T2, Palm Tungsten T3, Palm Tungsten C, Palm Tungsten W, Palm Zire 71, Palm Zire 72, Palm Treo 600, 650.

2.2 Unsupported handhelds

The following handhelds and smartphones are NOT supported:

Handspring Treo 90, Tapwave Zodiac, all Kyocera smartphones, all Sony Clie handhelds.

2.3 Supported desktop operation systems

We have successfully tested Card Export II with: Microsoft Windows 2000 and XP, Microsoft Windows Me and Mac OS X.

While Card Export II might works with other operation systems Softick doesn't support them.

Please consult readme.txt file for the latest compatibility information

2.4 Handheld software updates

Make sure to install the following software updates:

Palm Zire 71

To prevent card corruption make sure you have installed SD/SDIO update from PalmOne support site:

<http://www.palmone.com/us/support/downloads/zire71/sdioupdate.html>

Palm Tungsten T3

To prevent card corruption make sure you have installed Tungsten T3 Update from PalmOne support site:

http://www.palmone.com/us/support/downloads/tungstent3/t3_update.html

Palm Tungsten E

To successfully use SD/MMC cards larger 64MB you need to install MMC update freely available at www.palmone.com support site.

3. Installation

- Unpack Card Export II archive to your temporary folder
- Schedule CardExport2.prc for installation
- Press HotSync button on the cradle to install CardExport2.prc to your handheld PC.
- Launch Card Export on handheld and follow instructions.

Card Export II will be installed to default “Unfilled” category in the Palm OS Launcher.

3.1 First start

During first launch Card Export II will update your Palm OS system and ask you to perform soft reset.

Tapwave Zodiac note: *Card Export II will not update and reset your console. Card Export II can be used just after installation on Zodiac.*

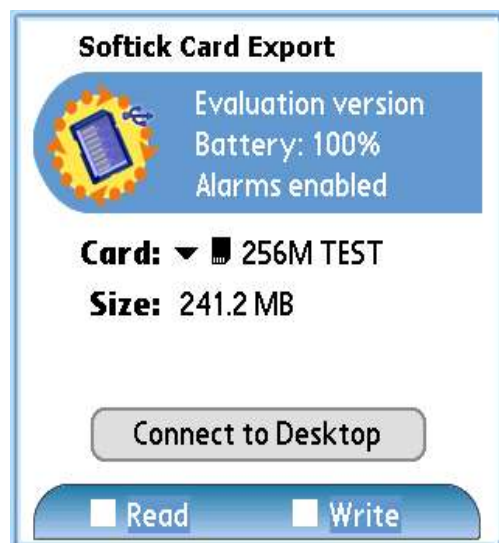


4. Using Card Export II

After launching Card Export II you will see similar picture (actual colors depend on your color scheme for modern PDA).

In order to export your storage card as disk you need to press “Connect to Desktop” button. After a few seconds your operation system should detect new USB device and automatically recognize your card's file system. Some operation systems can display card content as well.

In case your PDA has more then one expansion slot you can choose what card should be exported to desktop before pressing “Connect to Desktop” button.



Note: You cannot change active card in while Card Export II is connected to desktop. You need to press “Disconnect” button choose new card and press “Connect to Desktop” button again.

After connecting to desktop you can use any program to manager your card content. For Windows operation system you can use Windows Explorer, for Mac OS X you can use Finder or alternatives. You card will be accessible from desktop via new logical drive as any USB flash drive as shown on the following screen shots:

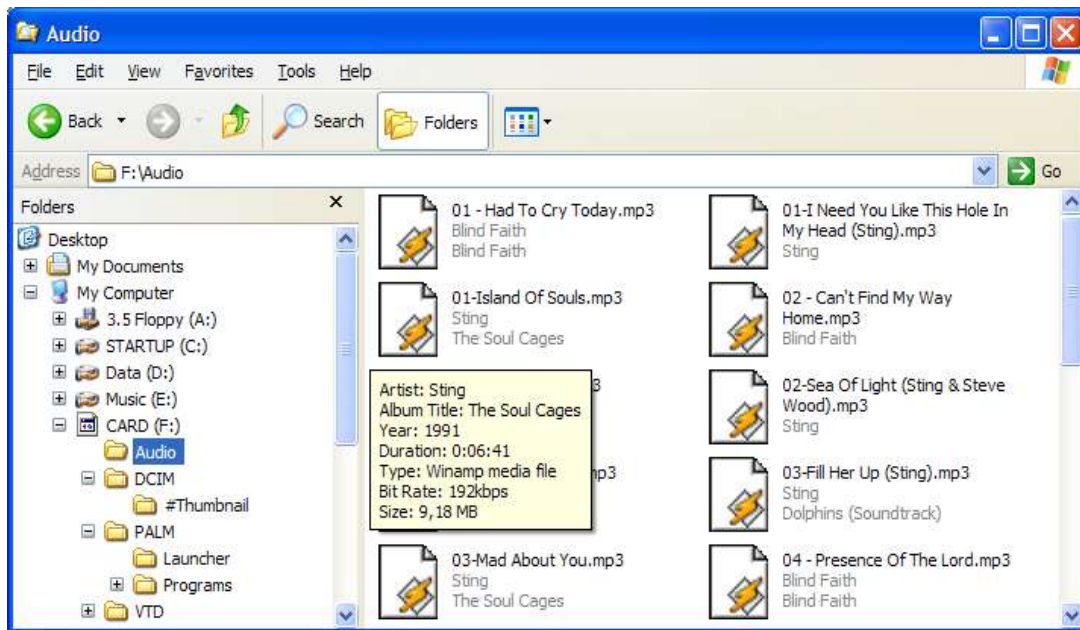


Illustration 1 Managing card content on Window platform

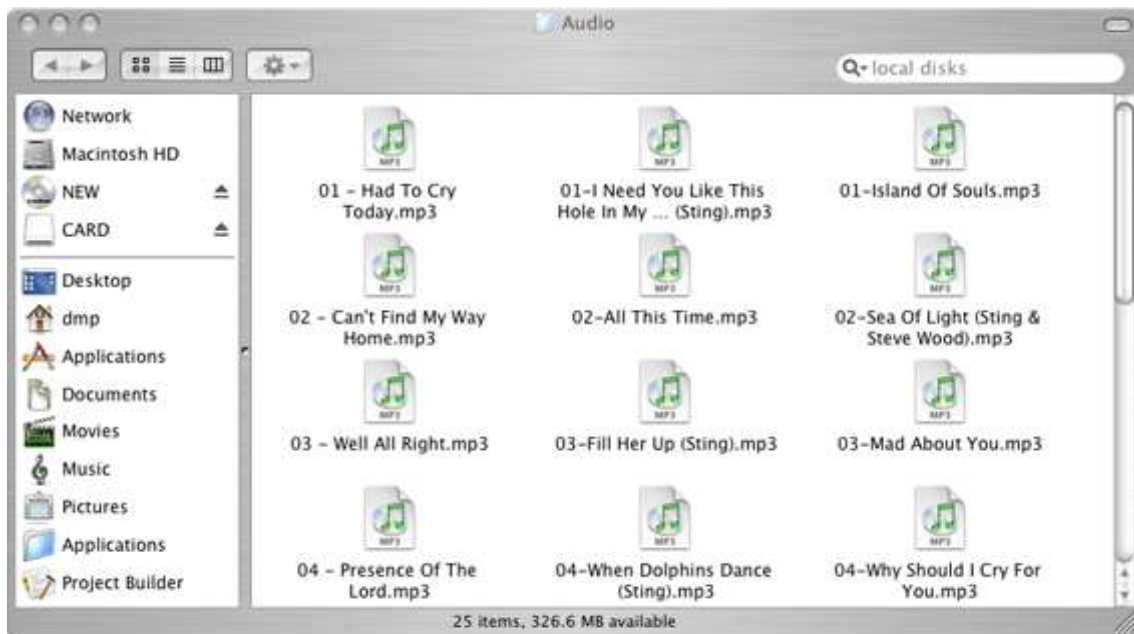


Illustration 2 Managing card content on Mac OS X platform

4.1 Folders on your cards

Consult to following table when copying your data to the card. Some programs on Palm powered devices can only access files stored in these folders.

Folder Name	Extensions	Description
/DCIM	.jpg, .jpeg, .gif, .qt, .mov, .mpg, .mpeg	Images in JPEG and GIF formats. QuickTime movies, MPEG movies
/AUDIO	.mp3, .wav	MPEG layer 3 encoded music, wave files, etc.
/Palm/Launcher	.prc, .pdb, .pqa	Palm OS Resources databases (executables), Record Databases and WebClipping files

4.2 Disconnecting Card Export II

When you finished with your files you can disconnect Card Export II from your desktop computer and unexport your storage card. You can do this by pressing “Disconnect” button on Card Export main screen.

You can just tap “Home” silkscreen button to exit Card Export. In this case Card Export will automatically disconnect from desktop computer and automatically re-connect on subsequent launch.

You can also disconnect Card Export II from desktop computer by using “Eject” function.

Note: Do not disconnect Card Export II, remove card from expansion slot or remove device from cradle while writing operation in progress. You can damage your file system!

Microsoft Windows 2000 note: You need to use “Safely remove hardware” dialog before disconnecting Card Export II.

Mac OS X note: You need to “eject” card volume in Finder before disconnecting Card Export II or warning dialog will appear.

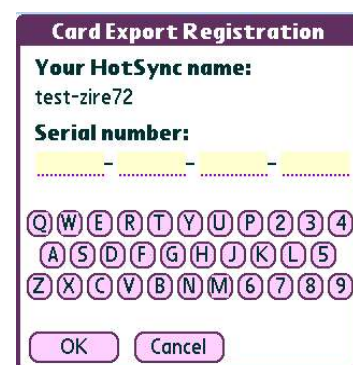


5. Card Export II Registration

Card Export is a “try before you buy” program. You can use it for 21 day without purchasing for evaluation purposes. After that you should either remove program from your devices or order a license.

During Card Export II ordering process our sales system will ask you your HotSync name. You can find in in HotSync application or by opening Card Export II registration dialog.

Please be carefully enter your HotSync name with all spaces and punctuation in case they are present. Passing wrong HotSync name will result a wrong license code.



Note: Menu and Card Export Registration dialog accessible only in disconnected state.

Note: Card Export II unlock codes (serial numbers) are in XXXXX-XXXXX-XXXXX-XXXXX format (twenty symbols four groups by). Card Export 1.xx has had XXXX-XXXX-XXXX-XXXX format (sixteen symbols in four groups).

6. Card Export II Uninstallation

You can remove Card Export 2 files by selecting “Uninstall” menu item from Card Export II main menu. After removing Card Export II files you can remove Card Export II executable from standard Launcher.

Note: Menu and Uninstallation function accessible only in disconnected state.



7. Card Export II Preferences

You can access Card Export II Preferences via Card Export II menu. Please note that menu can be accessed if Card Export II is disconnected.

Enable auto power save

Default: Checked

When checked Card Export II turn off the screen after 30 seconds of inactivity. Exported card still can be accessed from the USB host.

Disable connect optimization

Default: Not checked

Card Export II automatically tries to decrease virtual disk recognition time. Sometimes this optimization can lead to “Unrecognized USB device” error messages from the host. If you see this error message, try to disable this optimization.



8. Windows 98 USB Mass Storage Driver installation

In order to use Softick Card Export II with Windows 98/98SE you need to install USB Mass Storage Drivers from Softick.

We put these driver to the cardexport-win98.zip archive. To install them follow these steps:

- Create temporary folder, say C:\CE2Drivers
- Unpack cardexport-win98.zip to the temporary folder
- Launch Softick Card Export II on Palm Powered device.
- Microsoft Windows 98/98SE should ask for Drivers disk. Point wizard to your temporary folder.
- Depending on software installed on your PC you may need to reboot your computer.