

# Softick Audio Gateway

## **Quick Start Guide**

## Installation

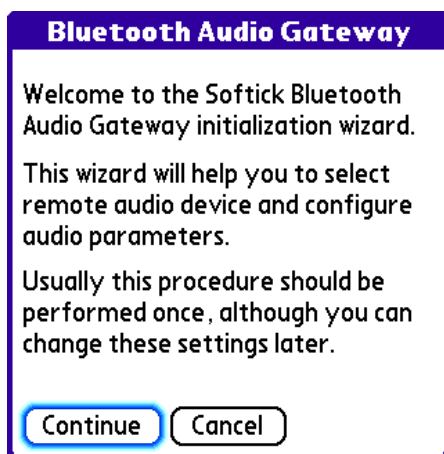
- a. Unpack archive to the some temporary folder (say C:\TEMP)
- b. You need to install:

**AudioGateway.prc**, a Softick Audio Gateway application

file to your handheld using HotSync (r) technology. After installation Softick Audio Gateway will be accessible in the Unfiled category in the application launcher.

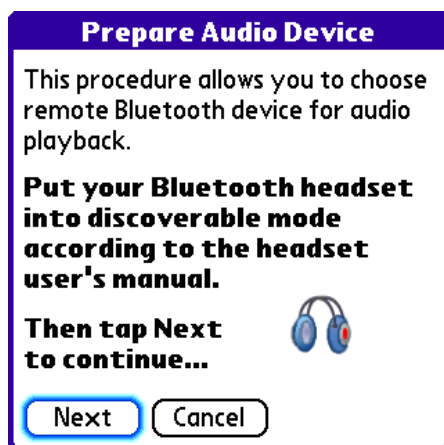
- c. Press HotSync button on the cradle or cable to install program files to your handheld.
- d. Launch Audio Gateway on the handheld.

## First start



*Illustration 1: Setup Wizard Step 1.*

During first launch a device setup wizard will appear. If you are ready to setup your A2DP device press Continue button. If you want to setup it later, press Cancel button to exit Audio Gateway.



*Illustration 2: Setup Wizard Step 2*

Now you need to put your stereo headset or headphones to the discoverable mode so Palm powered device can find it and establish connection. Please refer to the user manual of your headphones on detailed instructions, but usually you need to press main button for 3-30 seconds until LED starts blinking red and blue. When you are ready press Next button.

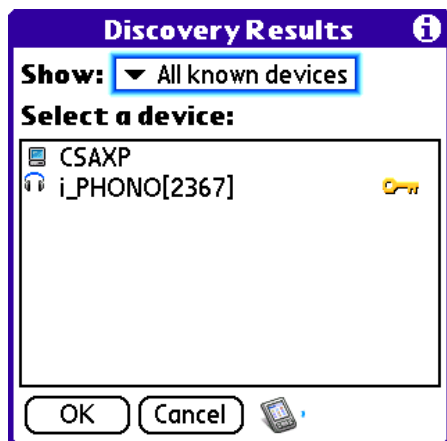


Illustration 3: Setup Wizard. Discovery page

Select your device from the list and press OK button. You may need to wait for a few seconds until Palm Bluetooth system is discovering your device.

**Pairing:** You may be asked for passkey during first connection to your bluetooth stereo headset or headphone. Please refer to your device owner manual for the default passkey. Usually it is «0000»

**Note:** We suggest to add your bluetooth device to the trusted list to quickly connect to the headset in future.

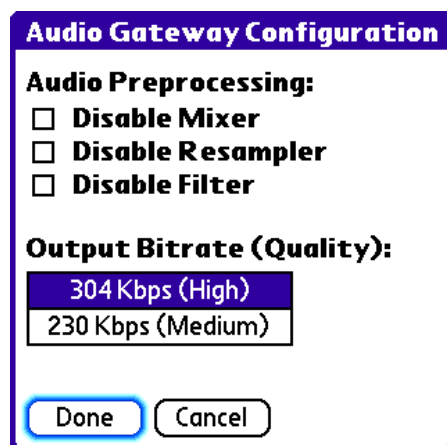


Illustration 4: Setup Wizard. Options

At the last page you can tune Audio Gateway parameters, but for the first time leave them in default state.

Now, you have setup your bluetooth headset and ready to connect for the first time.

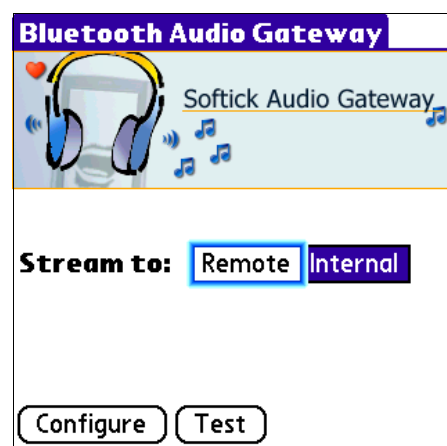


Illustration 5: Main Form

Now you can control how Palm sound streams will be dispatched. If you select «Remote» button Audio Gateway will connect to the bluetooth stereo headset and all newly created streams will be directed to headset.

If you want to revert to default behaviour, press Internal button and you would be able to listen to music via Internal speaker or wired headsets.

## Running music player

After connection to bluetooth headset is established you can switch back to the Launcher using Home button (Softick Audio Gateway will keep bluetooth connection), launch your media player and enjoy music via bluetooth!

Note: Make sure to disconnect bluetooth headset when you do not use it. Keeping bluetooth connection active can quickly drain your batteries.

## Registration

If you like using bluetooth stereo feature for Palm OS consider purchasing Softick Audio Gateway. We are distributing free evaluation copy so you can check if it meets your needs.

When you are ready to purchase license please go to the purchase site (you can always get your reseller address from Help ->| About form). After placing an order you will receive an unlock code (also known as serial number or registration key). You need to enter this code to the Audio Gateway to continue using it.

To enter registration code, select Help -> Register from Softick Audio Gateway menu.



Illustration 6: Registration Form

Enter your code exactly as you received it from Softick.

**Note: During an order you will be asked for HotSync name. Please specify it EXACTLY as it appears on Registration form. You can also find your HotSync name in HotSync application in top right corner.**

**The handheld on screenshot has «treo650» hotsync name, this isn't a handheld model or HotSync version.**