



VoicePlayIt™ 1.1

Users Manual

Copyright ©2007
VoiceIt™ Technologies, LLC.
All Rights Reserved.

www.voiceit-tech.com

Table of Contents

1. Introduction	2
2. System Requirements.....	2
2.1. Compatibility	2
3. Installation	2
3.1 Registering VoicePlayIt™ after Purchase.....	3
3.2 Resolving Registration Problems	5
4. Launching VoicePlayIt™	6
5. User Interface	7
5.1 Getting Started	10
5.2 Testing Voice Commands.....	12
5.3 Listening Mode	13
6. Settings	14
7. VoicePlayIt™ Special Notes.....	16
8. User License	16
9. Copyright.....	17
10. Disclaimer	18
11. Limitation of Liability	18
12. Technical Support.....	18

1. Introduction

VoicePlayIt™ is the FIRST and ONLY voice command and control software for Pocket Tunes. You can now control Pocket Tunes hands free with simple voice commands. Within seconds after training voice commands, like "Next Track", you will be able to control your favorite music with just your voice. VoicePlayIt™ really comes in handy while you are in the car, walking, running, or working out at the club.

2. System Requirements

- PalmOS® device with 5.2 Extended Sound Support (voice recording) compatibility.
- Pocket Tunes 2.x-4.x.
- Wired Headset or Earset with microphone.
- 1000Kb of free memory or 150Kb without graphics (vpit-001.prc) and voiceovers (vpit-wave.prc).

2.1. Compatibility

Will work with all PalmOS™ Powered devices running PalmOS™ 5.2 with audio recording support. Some of the currently supported models are: Palm Treo™ 600, 650, 680, 700p, and the new 755p smartphones.

3. Installation

To install VoicePlayIt™ you will need to run the saved file called "VoicePlayIt11forPalmOS.exe" on your PC. Then follow screen instructions.

3.1 Registering VoicePlayIt™ after Purchase

After installation is complete, launch VoicePlayIt™ by tapping on the VoicePlayIt™ icon. Press the Menu button on the phone and choose "Register VoicePlayIt" from the menu. The following screen will be displayed.



The serial number of your device is required for registration. In the example above, the serial number is circled. Carefully copy the **Serial Number (S/N)** from YOUR own screen. Note: there are no letter "O" characters in the serial number, only zeros. So in the example above, the 5th and 10th characters are both zeros. Now complete the following steps to register and create a License Key online.

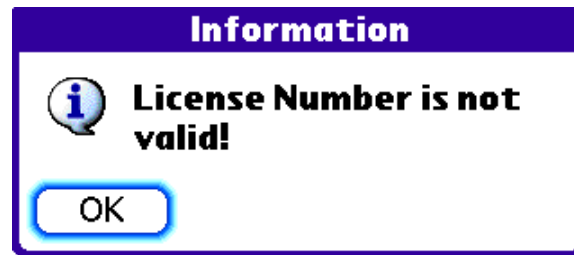
- Login at: <https://www.voiceit-tech.com/login.php>
- Use the password you received via email after purchasing to login.
- For best results, copy and paste the password into the login screen. Note: if your password contains lower-case letters, login via computer as your phone cannot generate lower-case letters. You may change the password after logging in.
- After logging in choose the "Generate License" option.
- Carefully enter your serial number in the space provided near the bottom of the form.
- Choose "VoicePlayIt" from the Application list.
- Click on the "Send License Key" button to complete registration. Your License Key will be displayed on screen. It will also be emailed to you.

3.1 Registering VoicePlayIt™ after Purchase - Continued

After you receive your License Key, access the Registration screen again. Tap on the VoicePlayIt™ icon, press the Menu button on the phone, and choose "Register VoicePlayIt" from the menu. Now carefully enter the License Key into the space after "License". Be sure to include the dashes when typing. Tap on the **Register License Key** button to complete the registration process. Following acceptance of the registration key, the screen will change to indicate that VoicePlayIt™ is registered. You will only have to do this once unless you replace your phone or perform a hard reset.



3.2 Resolving Registration Problems



If the message above is displayed during registration, please try the suggestions below:

- Carefully re-enter the License Key, and be sure to include the dashes.
- Confirm that the serial number was copied correctly. Launch VoicePlayIt™ and choose "Register VoicePlayIt" from the menu to display the Registration screen. Carefully compare the serial number on the screen with the serial number on your License Key email. Make sure each character is correct; in the proper order and that you have the right number of characters. If you notice any differences, please create a new license key as described in section 3.1. Be sure to enter the correct serial number in the space provided near the bottom of the form.
- If you have purchased other VoiceIt products or have an older version of VoicePlayIt™ check your License Key email to ensure that the Key was created for the appropriate product and version. If the Product listed in the License Key email is NOT VoicePlayIt™ 1.0 then create a new License Key as described in section 3.1. Be sure to choose the correct product/version from the Application list.
- If you cannot resolve the problem, contact our support team at: support.team@voiceit-tech.com and report the problem. Include in your email:
 - Product and Version Number
 - The correct serial number
 - Any invalid License Key(s) you generated

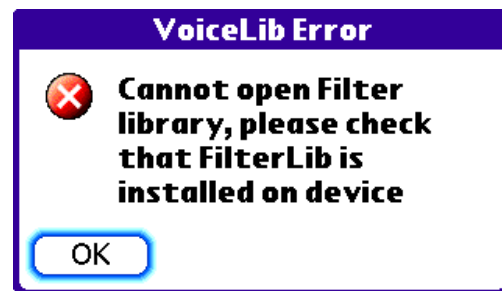
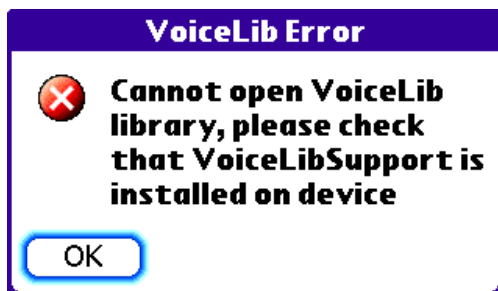
4. Launching VoicePlayIt™

To launch VoicePlayIt™, look for the icon and tap on it.

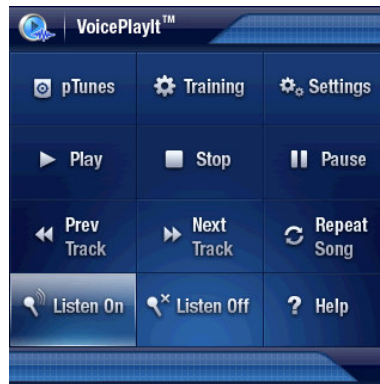


on your PalmOS® device/smartphone

If the following error messages are displayed after launching VoicePlayIt™, installation was not successful. Please reinstall VoicePlayIt™ as described in Section 3. Installation.



5. User Interface



Main Screen

Buttons



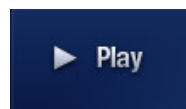
Tap this button to run Pocket Tunes. This allows you to select a playlist and start the playback in the background. After this operation, you need to restart VoicePlayIt™.



Tap this button to start the Training Wizard. After you have completed the training of all the voice commands you are able to start the listening mode.



Tap this button to display the Settings Screens.



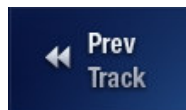
Tap this button to start the playback within Pocket Tunes.



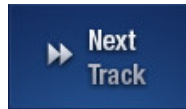
Tap this button to stop the playback within Pocket Tunes.



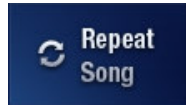
Tap this button to pause the playback within Pocket Tunes.



Tap this button to go to the previous song in the playlist within Pocket Tunes.



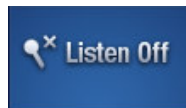
Tap this button to go to the next song in the playlist within Pocket Tunes.



Tap this button to have the song repeat in the current selected playlist within Pocket Tunes.



Tap this button to start the listening mode. Please note: You need to go through the training wizard first.



Tap this button to stop the listening mode.



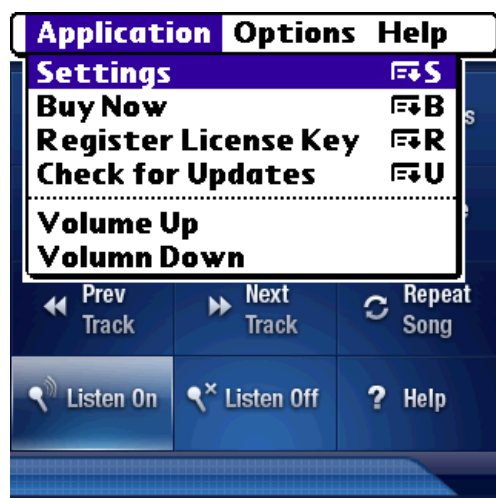
Tap this button to bring up the help tips.

Status

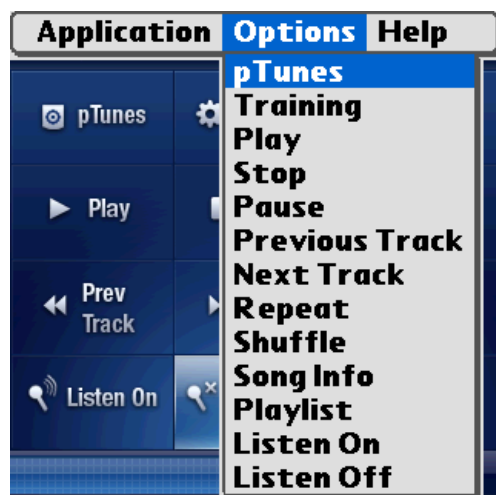


The status line indicates the Voice Recognition Engine mode. The modes are: Listening, Recording, Playback, Measuring, and Thinking. The recognized voice command is also displayed here.

Menu Options



To access the Application menu options, press the Menu button on the phone or tap on the VoicePlayIt™ title. This will bring up the following menu options; Settings, Buy Now, Register VoicePlayIt, Check for Updates, Volume Up, and Volume Down. Tap on Settings to get to the Settings Screens. Tap on Register VoicePlayIt to get to the Registration Screen. Tap on Check for Updates to check for a new version and to have it update. Tap on Volume Up or Volume Down to adjust the playback volume.



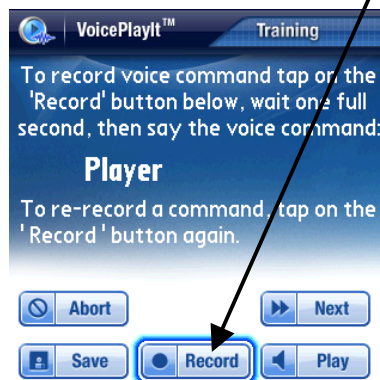
To access the Options menu option, press the Menu button on the phone or tap on the VoicePlayIt™ title and highlight Options. This will bring up the following menu options; pTunes, Training, Play, Stop, Pause, Previous Track, Next Track, Repeat, Shuffle, Song Info, Playlist, Listen On and Listen Off.

5.1 Getting Started

1. Tap the **Training** button on the main screen.



2. The Training Wizard screen will be displayed. Tap the **Record** button to train the current selected voice command.



2. Training Wizard – Record Button

3. The following Voice Command Recording screen will appear. Please say the displayed voice command one second after the beep. Please note: You will train each voice command three times.



3. Voice Command Recording

4. The following screen will appear after the third training pass on each voice command.



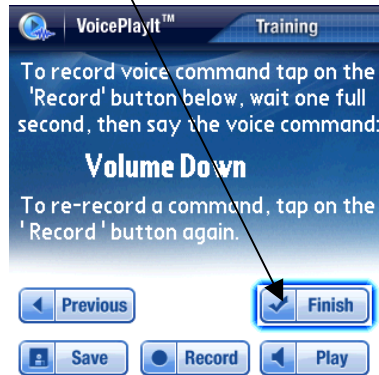
4. Voice Command Wave Displayed

5. After you have successfully trained each voice command please tap/select the **Next** button. This will bring you to the next voice command for training. Please note: The current Voice Commands are: Player, Play, Stop, Pause, Next Track, Previous Track, Shuffle, No Shuffle, Song Info, Repeat Song, No Repeat, Manage Playlist, Volume Up, and Volume Down.



5. Training Wizard – Next Button

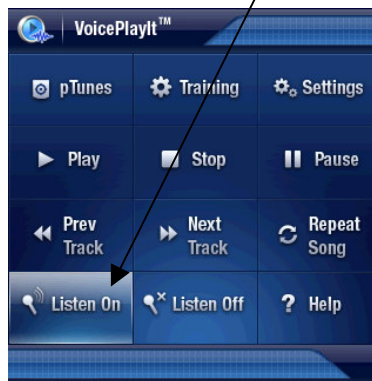
6. The last voice command in the Training Wizard is **Volume Down**. After training this voice command please tap/select the **Finish** button. Please note: You are now ready to start the listening mode.



6. Training Wizard – Last Voice Command

5.2 Testing Voice Commands

To test the trained voice commands, tap/select the **Listen On** button, wait one full second after you hear the beep, then speak one of the trained voice commands. If VoicePlayIt™ fails to recognize the trained voice command, you must re-train the voice command and test again.



5.3 Listening Mode

To voice control Pocket Tunes, you must start Listening mode. There are two ways to accomplish this:



Tap the **Listen On** button.

Or



Use the 5-way arrows and highlight **Listen On** then press the 5-way select key.

Once listening mode is active, simply speak the voice command one full second after the beep. Listening mode will remain active until you stop the listening mode via the **Listen Off** button or exit VoicePlayIt™. Please note: Make sure you say the voice command as you recorded it.

Hints: When recording a voice command make sure:

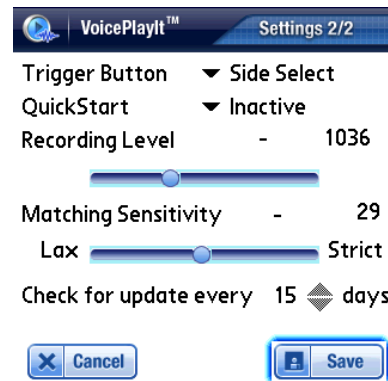
1. There are no VERY LOUD background noises.
2. Speak the voice command clearly and naturally.
3. Speak the voice command at the same distance from the microphone.
4. Always wait one full second after the beep before speaking.
5. Speak the voice command 3 times when prompted. VoicePlayIt™ utilizes tri-pass recording for better recognition, but for this to work you must make a good recording each time.

6. Settings

To configure VoicePlayIt™ settings, tap the Settings button or choose Settings from the menu. The following screens will appear:



Settings Screen 1



Settings Screen 2

☒ Voice Prompts - Training

To hear voice over prompts in Training screen, please check.

☒ Echo Playback - Training

To hear your trained voice commands, please check.

☒ Voice Prompts - Listening

To hear voice over prompts in Main screen, please check.

☒ Echo Playback - Listening

To hear your issued voice commands, please check.

☒ Screen Voice Prompts

To hear screen voice overs, please check.

☐ Background Noise Filtration

To help cut out background noise while in listening mode, please check. Please note: If you are running pTunes 4.x please disable this feature.

☐ "Player" Voice Activation

If you wish have voice activation before each voice command, please check.

Trigger Button ▼ **Side Select**

This activates the listening mode for Training or Voice Control.

QuickStart ▼ **Inactive**


This makes the Trigger button work outside of VoicePlayIt. Set to Active to make the Trigger button work outside of VoicePlayIt.

Recording Level - **1036**

To adjust the recording level of your microphone please lower or higher accordingly. Please note: The default setting is 1024. The range is 512-2048.

Matching Sensitivity - **29****Lax**  **Strict**

Matching Sensitivity adjusts the recognition parameters of the VoicePlayIt™ engine. If you have a cold or get "No Match" results, move the slider towards Lax, then try again. If the wrong voice command is selected move the slider towards Strict and try again. Scale ranges from 1 (Strict) to 60 (Lax)
Recommendation: keep at 30 initially.

Check for update every **0**  **days**

Choose how often you want to check for updates.

Recommendation: keep at 15 days.



Tap the Cancel button to discard changed settings and return to the main screen.



Tap the Next button to display the second Settings screen.



Tap the Save button to save changed settings and exit the Settings screen. Please note: If you do not tap on the Save button, changed settings are not saved.

7. VoicePlayIt™ Special Notes

- VoicePlayIt(tm) requires a wired Headset or Earset with microphone.
- Please make sure to disable "Turn off screen while playing after" option inside of iTunes.
- For best results make sure to use SD memory for storage and playback of songs.
- Does not work well with loud background noise present.
- Supports two seconds of recording for each voice command.
- Wireless (Bluetooth) headsets and devices are not supported.
- VoicePlayIt™ files must be installed on the phone; VoicePlayIt™ will not work properly if installed on the expansion (SD) card.

8. User License

This is an agreement between you, the end user, and VoiceIt Technologies, LLC.. ("VoiceIt"). By using this software, you are agreeing to become bound by the terms of this agreement.

IF YOU DO NOT AGREE TO THE TERMS OF THIS AGREEMENT, DO NOT USE THIS SOFTWARE. PROMPTLY REMOVE IT FROM YOUR COMPUTER.

1. GRANT OF LICENSE. VoiceIt, as Licensor, grants to you, the Licensee, a non-exclusive right to use this software program (hereinafter the "Software") in accordance with the terms contained in this license. You may use the Software on a single computer.
2. OWNERSHIP OF SOFTWARE. VoiceIt retains the copyright, title and ownership of the SOFTWARE and the written materials regardless of the form or media in or on which the original and other copies may exist. You may make one (1) copy of the SOFTWARE solely for backup purposes. You must reproduce and include the copyright notice on the backup copy.
3. TRANSFERS. You may physically transfer the SOFTWARE from one of your computers to another provided that the SOFTWARE is used on only one computer at a time.
4. TERM. This License is effective on the date you purchased the SOFTWARE. VoiceIt reserves the right to terminate this license at any time and any such termination shall be effective immediately without notice. Upon termination you shall destroy the written materials and all copies of the SOFTWARE, including modified copies, if any.
5. US GOVERNMENT RESTRICTED RIGHTS. The SOFTWARE and any accompanying materials are provided with Restricted Rights. Use, duplication or disclosure by the Government is subject to restrictions as set forth in subparagraph (c)(1)(ii) of The Rights in Technical Data

and Computer Software clause at DFARS 252.227-7013, or subparagraphs (c)(1) and (2) of the Commercial Computer Software - Restricted Rights at 48 CFR 52.227-19, as applicable. Contractor/manufacturer is VoiceIt Technologies, LLC., 3500 Girard Ave. S, Minneapolis, MN 55408.

9. Copyright

Ownership rights and intellectual property rights in and to the Software shall remain in VoiceIt™ Technologies, LLC. The Software is protected by the copyright laws of United States and international copyright treaties. This License gives you no rights to such content.

VoicePlayIt™, VoiceLib, VoiceLibSupport, and VoiceLibFilter ©Copyright 2004-2007 VoiceIt™ Technologies, LLC.

10. Disclaimer

(a) **DISCLAIMER OF WARRANTY.** The Software is provided on an "AS IS" basis, without warranty of any kind, including without limitation the warranties of merchantability, fitness for a particular purpose and non-infringement.

(b) You and not VoiceIt™ Technologies, LLC. assume the entire cost of any service and repair. In addition, mechanism implemented by the Software may have inherent procedural limitations, and you must determine that the Software sufficiently meets your requirements.

(c) This disclaimer of warranty constitutes an essential part of the agreement.

11. Limitation of Liability

UNDER NO CIRCUMSTANCES AND UNDER NO LEGAL THEORY, TORT, CONTRACT, OR OTHERWISE, SHALL VOICEIT TECHNOLOGIES, LLC. OR ITS SUPPLIERS OR RESELLERS BE LIABLE TO YOU OR ANY OTHER PERSON FOR ANY INDIRECT, SPECIAL, INCIDENTAL, OR CONSEQUENTIAL DAMAGES OF ANY CHARACTER INCLUDING, WITHOUT LIMITATION DAMAGES FOR LOSS OF GOODWILL, WORK STOPPAGE, COMPUTER FAILURE OR MALFUNCTION, OR ANY AND ALL OTHER COMMERCIAL DAMAGES OR LOSSES.

12. Technical Support

For technical support, please send email to: support.team@voiceit-tech.com or visit our website at www.voiceit-tech.com

Web based online support: <http://www.voiceit-tech.com/forum/index.php>